

DALEY LAND SURVEYING, INC.

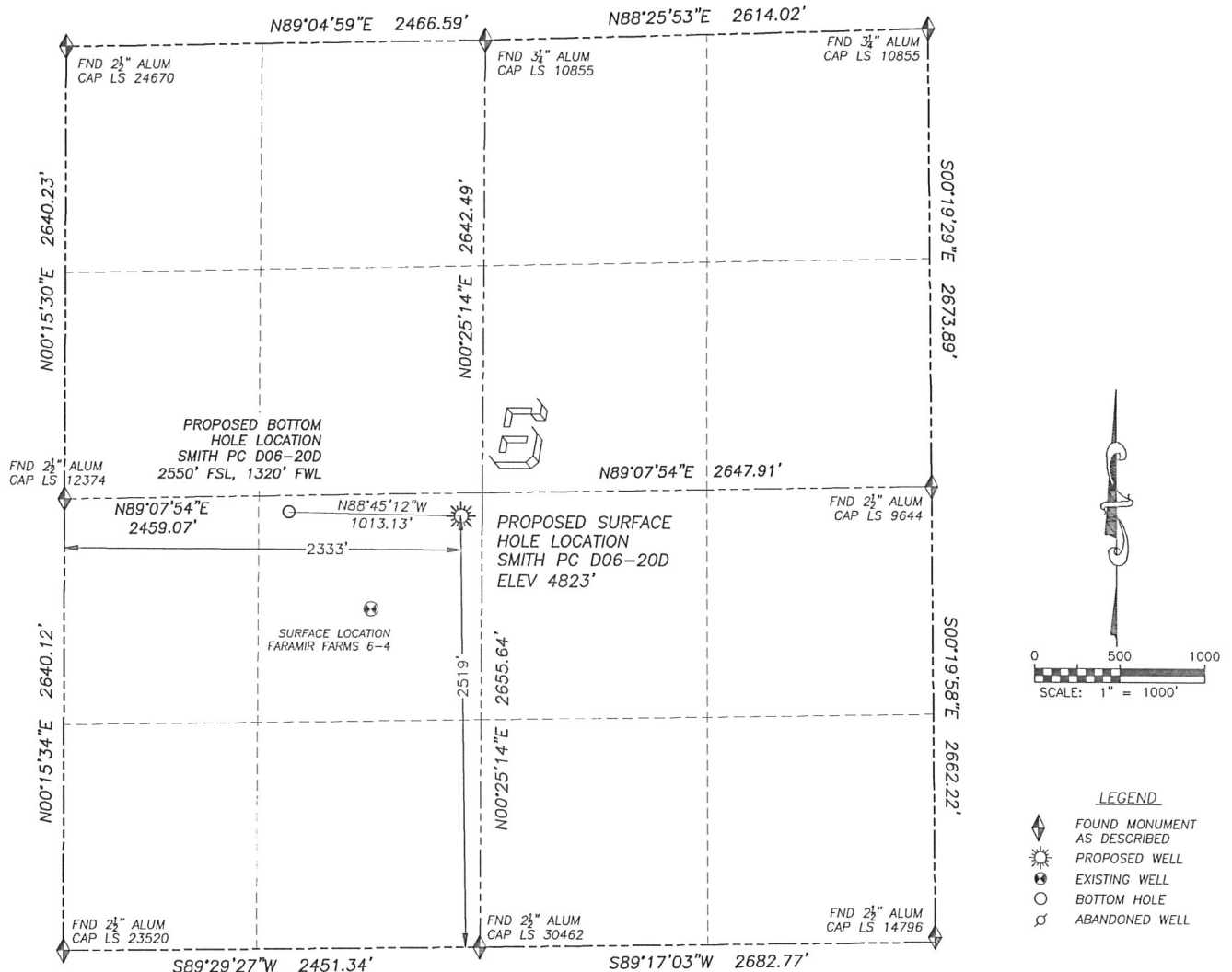
PARKER, CO. 80134

303 953 9841

WELL LOCATION CERTIFICATE

SMITH PC D06-20D

SECTION 6, TOWNSHIP 3 NORTH, RANGE 64 WEST OF THE 6TH PRINCIPAL MERIDIAN



NAD 83 LATITUDE AND LONGITUDE

SMITH PC D06-20D SURFACE HOLE:

LATITUDE: N40.25396°
 LONGITUDE: W104.59412°
 ELEVATION: 4823'
 PDOP 1.2
 2519' FSL, 2333' FWL

BOTTOM HOLE:

LATITUDE: N40.25402°
 LONGITUDE: W104.59775°
 2550' FSL, 1320' FWL

NEAREST EXISTING WELL:

FARAMIR FARMS 6-4 SURFACE HOLE
 LATITUDE: N40.25247°
 LONGITUDE: W104.59603°
 ELEVATION: 4822'
 761' SOUTHWEST

QUARTER/QUARTER: NE4/SW4

NEAREST APPARENT PROPERTY LINE:
 125'± EAST

IN ACCORDANCE WITH A REQUEST FROM BEAU FRITZ OF NOBLE ENERGY INC., DALEY LAND SURVEYING, INC. HAS DETERMINED THE SURFACE LOCATION OF THE SMITH PC D06-20D WELL TO BE 2519' FSL, 2333' FWL, AS MEASURED AT NINETY (90) DEGREES FROM THE SECTION LINES OF SECTION 6, TOWNSHIP 3 NORTH, RANGE 64 WEST OF THE 6TH PRINCIPAL MERIDIAN, WELD COUNTY, COLORADO.

THE BOTTOM HOLE LOCATION, PROVIDED BY THE CLIENT, IS TO BE 2550' FSL, 1320' FWL.

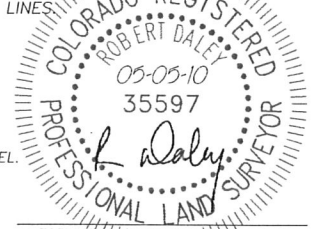
I HEREBY CERTIFY THAT THIS WELL LOCATION CERTIFICATE WAS PREPARED BY ME OR UNDER MY DIRECT SUPERVISION, THAT THE WORK WAS COMPLETED ON 4/29/2010 FOR AND ON BEHALF OF NOBLE ENERGY, INC., AND THAT THIS MAP DOES NOT REPRESENT A BOUNDARY SURVEY, IT IS NOT TO BE RELIED UPON FOR THE ESTABLISHMENT OF FENCE, BUILDING OR OTHER FUTURE IMPROVEMENT LINES.

NOTES:

- 1) BEARINGS FOR THIS MAP ARE ASSUMED AND BASED UPON GPS OBSERVATIONS MADE BETWEEN MONUMENTS LOCATED AT THE SOUTHWEST CORNER AND WEST QUARTER CORNER OF SECTION 6, T.3N., R.64W.
- 2) HORIZONTAL DATUM IS NAD83.
- 3) VERTICAL DATUM IS NAVD88. ELEVATIONS ARE DERIVED FROM GPS OBSERVATIONS PROCESSED THROUGH OPUS, UTILIZING THE GEOID03 MODEL.
- 4) SEE VISIBLE IMPROVEMENTS EXHIBIT FOR VISIBLE IMPROVEMENTS WITHIN 600' OF PROPOSED SURFACE HOLE LOCATION.
- 5) SURFACE USE: PASTURE.

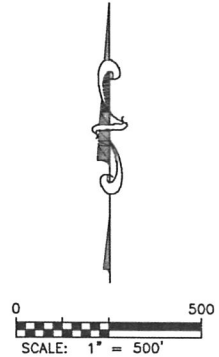
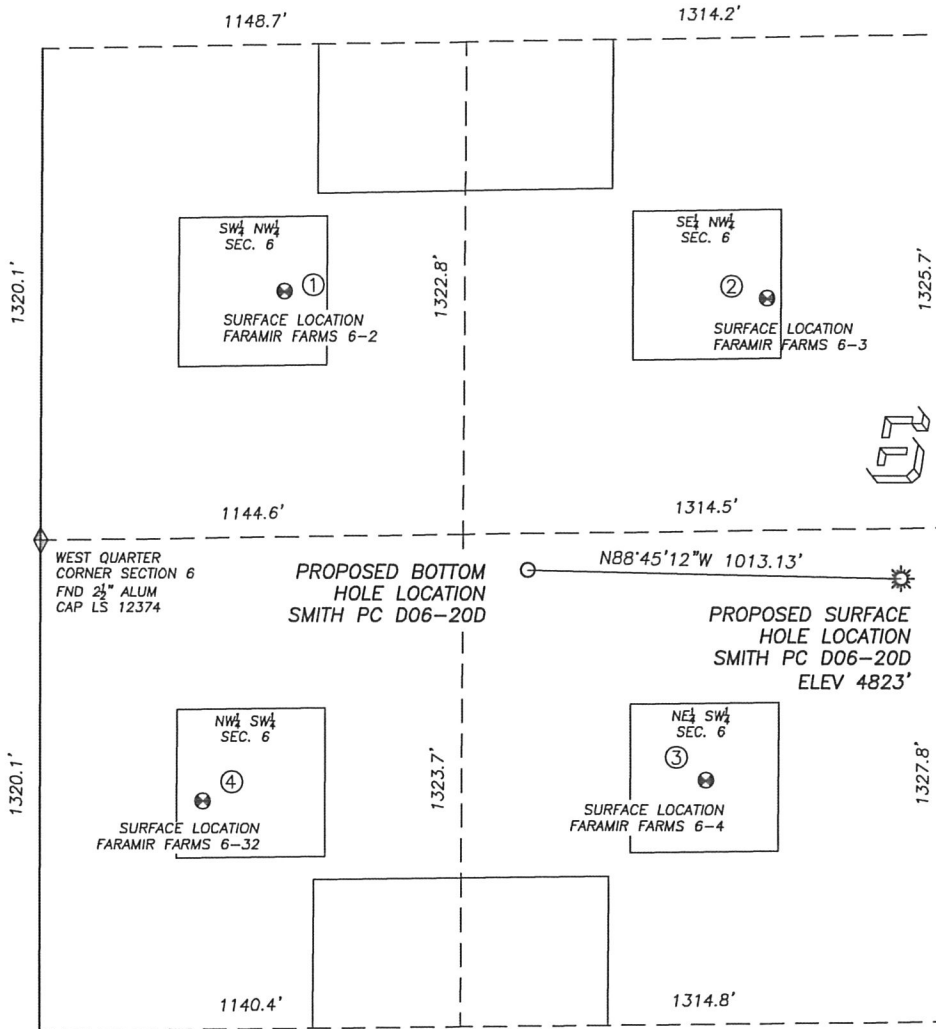
NOTICE: According to Colorado law you MUST commence any legal action based upon any defect in this W.L.C. within three years after you first discover such defect. In no event may any action based upon any such defect in this W.L.C. be commenced more than ten years from the date of the certification shown herein.

FOR AND ON BEHALF OF
 DALEY LAND SURVEYING, INC.,
 Robert Daley, PLS 35597



SITE SKETCH SMITH PC D06-20D

SECTION 6, TOWNSHIP 3 NORTH, RANGE 64 WEST OF THE 6TH PRINCIPAL MERIDIAN



LEGEND

- ◆ FOUND MONUMENT AS DESCRIBED
- ☀ PROPOSED WELL
- ⊙ EXISTING WELL
- BOTTOM HOLE
- ⊘ ABANDONED WELL

NOTES:

- 1) THIS DOES NOT REPRESENT A BOUNDARY SURVEY
- 2) THE LATITUDES AND LONGITUDES SHOWN ARE REFERENCED TO NAD83
- 3) DATUM FOR ELEVATION IS NAVD83. ELEVATIONS ARE DERIVED FROM GPS-RTK OBSERVATIONS PROCESSED THROUGH OPUS, UTILIZING THE GEOID03 MODEL.

①

FARAMIR FARMS 6-2
SW/NW SEC. 6
1981' FNL, 657' FWL
997' NW OF PROPOSED
BOTTOM HOLE LOCATION
LAT. N40.25607'
LONG. W104.60012'
EL: 4847'
PDOP 2.0

②

FARAMIR FARMS 6-3
SE/NW SEC. 6
2019' FNL, 1966' FWL
978' NE OF PROPOSED
BOTTOM HOLE LOCATION
LAT. N40.25603'
LONG. W104.59543'
EL: 4827'
PDOP 1.6

③

FARAMIR FARMS 6-4
NE/SW SEC. 6
1980' FSL, 1803' FWL
742' SE OF PROPOSED
BOTTOM HOLE LOCATION
LAT. N40.25247'
LONG. W104.59603'
EL: 4822'
PDOP 1.4

④

FARAMIR FARMS 6-32
NW/SW SEC. 6
1935' FSL, 441' FWL
1079' SW OF PROPOSED
BOTTOM HOLE LOCATION
LAT. N40.25232'
LONG. W104.60091'
EL: 4834'
PDOP 1.9

