

SAMSON RESOURCES CORP - EBUS
DO NOT MAIL - TWO WEST 2ND ST
TULSA, Oklahoma

Southern Ute 33-8-28 #5

H & P/H & P/292

Post Job Summary

Cement Surface Casing

Prepared for:
Date Prepared:

Version: 1

Service Supervisor: MILLER, KEVIN

Submitted by:

The Road to Excellence Starts with Safety

Sold To #: 345114	Ship To #: 345114	Quote #:	Sales Order #: 7448770
Customer: SAMSON RESOURCES CORP - EBUS		Customer Rep:	
Well Name: Southern Ute 33-8-28		Well #: #5	API/UWI #:
Field: IGNACIO / BLANCO	City (SAP): TULSA	County/Parish: La Plata	State: Colorado
Contractor: H & P		Rig/Platform Name/Num: H & P 292	
Job Purpose: Cement Surface Casing			
Well Type: Development Well		Job Type: Cement Surface Casing	
Sales Person: SNYDER, RANDALL	Srvc Supervisor: MILLER, KEVIN		MBU ID Emp #: 443040

Job Personnel

HES Emp Name	Exp Hrs	Emp #	HES Emp Name	Exp Hrs	Emp #	HES Emp Name	Exp Hrs	Emp #
HOEFER, BRYAN D	15	415775	JONES, DAVID Michael	15	409749	LAMBSON, NATHANIEL A	15	343100
MILLER, KEVIN Paul	15	443040						

Equipment

HES Unit #	Distance-1 way	HES Unit #	Distance-1 way	HES Unit #	Distance-1 way	HES Unit #	Distance-1 way
10011433C	50 mile	10025104	50 mile	10871245	50 mile	10897805	50 mile
11338239	50 mile	11360881	50 mile				

Job Hours

Date	On Location Hours	Operating Hours	Date	On Location Hours	Operating Hours	Date	On Location Hours	Operating Hours
6/20/10	1	0	6/21/10	14	3			

TOTAL Total is the sum of each column separately

Job

Formation Name	Formation Depth (MD)	Top	Bottom	Form Type	Job depth MD	Job Depth TVD	Water Depth	Perforation Depth (MD)	From	To	Deparated Loc
				BHST	975. ft	975. ft					
							Wk Ht Above Floor			4. ft	

Job Times

Date	Time	Time Zone
20 - Jun - 2010	19:00	MST
21 - Jun - 2010	23:00	MST
21 - Jun - 2010	14:20	MST
21 - Jun - 2010	15:24	MST

Well Data

Description	New / Used	Max pressure psig	Size in	ID in	Weight lbm/ft	Thread	Grade	Top MD ft	Bottom MD ft	Top TVD ft	Bottom TVD ft
12 1/4" Surface Open Hole				12.25				.	975.		
8 5/8" Surface Casing	Unknown		8.625	7.921	32.			.	975.	.	975.

Sales/Rental/3rd Party (HES)

Description	Qty	Qty uom	Depth	Supplier
PLUG,CMTG,TOP,8 5/8,HWE,7.20 MIN/8.09 MA	1	EA		

Tools and Accessories

Type	Size	Qty	Make	Depth	Type	Size	Qty	Make	Depth	Type	Size	Qty	Make
Guide Shoe					Packer					Top Plug	8.625	1	HES
Float Shoe					Bridge Plug					Bottom Plug			
Float Collar					Retainer					SSR plug set			
Insert Float										Plug Container	8.625	1	HES
Stage Tool										Centralizers			

Miscellaneous Materials

Gelling Agt	Conc	Surfactant	Conc	Acid Type	Qty	Conc	%
-------------	------	------------	------	-----------	-----	------	---

Treatment Fld		Conc		Inhibitor		Conc		Sand Type		Size		Qty	
---------------	--	------	--	-----------	--	------	--	-----------	--	------	--	-----	--

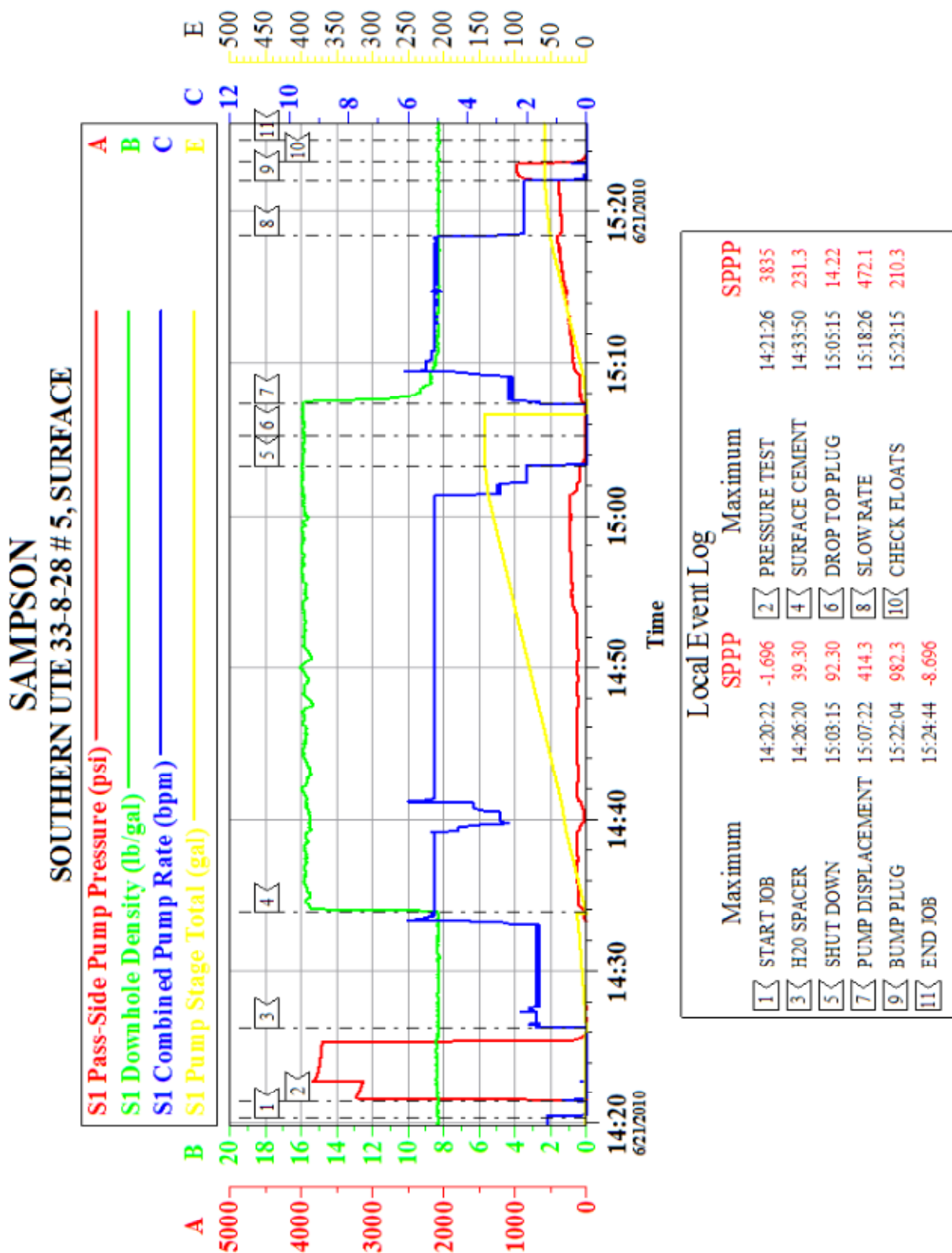
Fluid Data										
Stage/Plug #: 1										
Fluid #	Stage Type	Fluid Name	Qty	Qty uom	Mixing Density lbm/gal	Yield ft ³ /sk	Mix Fluid Gal/sk	Rate bbl/min	Total Mix Fluid Gal/sk	
1	Water Spacer		10.00	bbl	8.33	.0	.0	.0		
2	Surface Cement	CEMENT STANDARD TYPE V, BULK (101394863)	710.0	sacks	15.8	1.16	5.02		5.02	
	94 lbm	CEMENT STANDARD TYPE V, BULK (101394863)								
	0.125 lbm	POLY-E-FLAKE (101216940)								
	1 %	CALCIUM CHLORIDE - HI TEST PELLET (100005053)								
	5.023 Gal	FRESH WATER								
3	Displacement		60.00	bbl	8.33	.0	.0	.0		
Calculated Values		Pressures		Volumes						
Displacement	59.5	Shut In: Instant		Lost Returns	0	Cement Slurry	146	Pad		
Top Of Cement	SURFACE	5 Min		Cement Returns	72.5	Actual Displacement	59.5	Treatment		
Frac Gradient		15 Min		Spacers		Load and Breakdown		Total Job		
Rates										
Circulating	5	Mixing	5	Displacement	5	Avg. Job	5			
Cement Left In Pipe	Amount	36.5 ft	Reason	Shoe Joint						
Frac Ring # 1 @	ID	Frac ring # 2 @	ID	Frac Ring # 3 @	ID	Frac Ring # 4 @	ID			
The Information Stated Herein Is Correct				Customer Representative Signature						

The Road to Excellence Starts with Safety

Sold To #: 345114	Ship To #: 345114	Quote #:	Sales Order #: 7448770
Customer: SAMSON RESOURCES CORP - EBUS		Customer Rep:	
Well Name: Southern Ute 33-8-28		Well #: #5	API/UWI #:
Field: IGNACIO / BLANCO	City (SAP): TULSA	County/Parish: La Plata	State: Colorado
Legal Description:			
Lat:		Long:	
Contractor: H & P		Rig/Platform Name/Num: H & P 292	
Job Purpose: Cement Surface Casing			Ticket Amount:
Well Type: Development Well		Job Type: Cement Surface Casing	
Sales Person: SNYDER, RANDALL		Srv Supervisor: MILLER, KEVIN	MBU ID Emp #: 443040

Activity Description	Date/Time	Cht #	Rate bbl/min	Volume bbl		Pressure psig		Comments
				Stage	Total	Tubing	Casing	
Pre-Convoy Safety Meeting	06/20/2010 20:45							ALL HES PERSONEL
Crew Leave Yard	06/20/2010 21:00							
Arrive At Loc	06/20/2010 22:30							RIG WAS STILL DRILLING UPON ARRIVAL
Assessment Of Location Safety Meeting	06/20/2010 22:35							ALL HES PERSONEL
Rig-Up Equipment	06/21/2010 12:30							1 HT-400, 2 660 BULK TRUCKS, IRON TO RIG, WATER HOSES
Rig-Up Completed	06/21/2010 13:40							
Pre-Job Safety Meeting	06/21/2010 14:00							ALL HES PERSONEL AND RIG CREW
Start Job	06/21/2010 14:20							TD-975', TP-972.64, SJ-36.49, MUD-9.1# YIELD 13, PV-14, CASING 8 5/8, 24#, J-55, HOLE-12 1/4,
Pressure Test	06/21/2010 14:21							ALL LINES HELD PRESSURE @ 300 psi
Pump Spacer 1	06/21/2010 14:26		5	10			100.0	FRESH WATER
Pump Tail Cement	06/21/2010 14:33		5	146.7			250.0	710 SKS, 15.8 PPG, 1.16 FT3/ SK, 5.02 GAL/SK, GOT CEMENT RETURNS 131 BBLS INTO DISPLACEMENT, 72.5 BBLS OF CEMENT TO SURFACE
Shutdown	06/21/2010 15:03							
Drop Top Plug	06/21/2010 15:05							COMPANY REP. VERIFIED THE PLUG LAUNCHED

Activity Description	Date/Time	Cht #	Rate bbl/ min	Volume bbl		Pressure psig		Comments
				Stage	Total	Tubing	Casing	
Pump Displacement	06/21/2010 15:07		5	59.5			500.0	FRESH WATER, WASHED UP ON TOP OF PLUG AS PER COMPANY MAN
Slow Rate	06/21/2010 15:18		5	50			370.0	SLOWED RATE TO 4 BBLs PER MIN. LAST 10BBLs
Bump Plug	06/21/2010 15:22		5	59.5			1000. 0	BUMPED PLUG 500PSI OVER
Check Floats	06/21/2010 15:23							FLOATS HELD, 1/2 BBL BACK
End Job	06/21/2010 15:24							
Post-Job Safety Meeting (Pre Rig-Down)	06/21/2010 15:30							ALL HES PERSONEL
Rig-Down Completed	06/21/2010 16:20							
Depart Location Safety Meeting	06/21/2010 16:40							ALL HES PERSONEL
Crew Leave Location	06/21/2010 17:10							
Other	06/21/2010 17:11							THANK YOU FOR CHOOSING HALLIBURTON, KEVIN MILLER AND CREW



Customer: SAMPSON	Job Date: 21-Jun-2010	Sales Order #: 7448770
Well Description: SOUTHERN UTE 33-9-28 #5	Job type: SURFACE	ADC Used: YES
Customer Rep: FRED DENNISON	Service Supervisor: KEVIN MILLER	Operator/ Pump: B. HOFFER/ ELITE 8