
BILL BARRETT CORPORATION E-BILL

**GGU SWANSON 33D-29-691
MAMM CREEK
Garfield County , Colorado**

Cement Surface Casing
08-Sep-2010

Post Job Summary

The Road to Excellence Starts with Safety

Sold To #: 343492		Ship To #: 2802180		Quote #:		Sales Order #: 7580308	
Customer: BILL BARRETT CORPORATION E-BILL				Customer Rep: South, Jodi			
Well Name: GGU SWANSON			Well #: 33D-29-691			API/UWI #: 05-045-19643	
Field: MAMM CREEK		City (SAP): RIFLE		County/Parish: Garfield		State: Colorado	
Lat: N 39.497 deg. OR N 39 deg. 29 min. 48.17 secs.				Long: W 107.576 deg. OR W -108 deg. 25 min. 26.27 secs.			
Contractor: BARRETT			Rig/Platform Name/Num: PETRO PLUS				
Job Purpose: Cement Surface Casing							
Well Type: Development Well			Job Type: Cement Surface Casing				
Sales Person: METLI, MARSHALL			Srvc Supervisor: MAIN, CHAD			MBU ID Emp #: 335770	

Job Personnel

HES Emp Name	Exp Hrs	Emp #	HES Emp Name	Exp Hrs	Emp #	HES Emp Name	Exp Hrs	Emp #
BROWN, TRAVIS A	3.0	396848	COSTELDIA, BROCK James	3.0	476115	LOPEZ, GERALD Wayne	3.0	479828
MAIN, CHAD R	3.0	335770	SIMINEO, JEROD M	3.0	479954	TRIPLETT, MICHEAL Anthony	3.0	447908

Equipment

HES Unit #	Distance-1 way	HES Unit #	Distance-1 way	HES Unit #	Distance-1 way	HES Unit #	Distance-1 way
10001431	120 mile	10551730C	120 mile	10724643	120 mile	10804487	120 mile
10951244	120 mile						

Job Hours

Date	On Location Hours	Operating Hours	Date	On Location Hours	Operating Hours	Date	On Location Hours	Operating Hours
09/07/2010	1.0	1.0	09/08/2010	2.5	2.5			

TOTAL Total is the sum of each column separately

Job

Formation Name	Top	Bottom	Called Out	Date	Time	Time Zone
Formation Depth (MD)			On Location	07 - Sep - 2010	22:00	MST
Form Type		BHST	Job Started	07 - Sep - 2010	23:00	MST
Job depth MD	794.3 ft	Job Depth TVD	Job Completed	08 - Sep - 2010	00:38	MST
Water Depth		Wk Ht Above Floor	Departed Loc	08 - Sep - 2010	01:51	MST
Perforation Depth (MD)	From	To		08 - Sep - 2010	02:30	MST

Well Data

Description	New / Used	Max pressure psig	Size in	ID in	Weight lbm/ft	Thread	Grade	Top MD ft	Bottom MD ft	Top TVD ft	Bottom TVD ft
-------------	------------	-------------------	---------	-------	---------------	--------	-------	-----------	--------------	------------	---------------

Sales/Rental/3rd Party (HES)

Description	Qty	Qty uom	Depth	Supplier
PLUG,CMTG,TOP,9 5/8,HWE,8.16 MIN/9.06 MA	1	EA		
R/A DENSOMETER W/CHART RECORDER,/JOB,ZI	1	JOB		
PORT. DATA ACQUIS. W/OPTICEM RT W/HES	1	EA		

Tools and Accessories

Type	Size	Qty	Make	Depth	Type	Size	Qty	Make	Depth	Type	Size	Qty	Make
Guide Shoe					Packer					Top Plug	9/58	1	HES
Float Shoe					Bridge Plug					Bottom Plug			
Float Collar					Retainer					SSR plug set			
Insert Float										Plug Container	9 5/8	1	HES
Stage Tool										Centralizers			

Miscellaneous Materials

Gelling Agt	Conc	Surfactant	Conc	Acid Type	Qty	Conc	%
Treatment Fld	Conc	Inhibitor	Conc	Sand Type	Size		Qty

Fluid Data									
Stage/Plug #: 1									
Fluid #	Stage Type	Fluid Name	Qty	Qty uom	Mixing Density lbm/gal	Yield ft ³ /sk	Mix Fluid Gal/sk	Rate bbl/min	Total Mix Fluid Gal/sk
1	WATER SPACER		20.00	bbl	.	.0	.0	.0	
2	Lead Cement	VERSACEM (TM) SYSTEM (452010)	120.0	sacks	12.3	2.37	13.76		13.42
	13.418 Gal	FRESH WATER							
3	Tail Cement	SWIFTCEM (TM) SYSTEM (452990)	120.0	sacks	14.2	1.43	6.88		6.72
	6.715 Gal	FRESH WATER							
4	DISPLACEMENT		58.00	bbl	.	.0	.0	.0	
Calculated Values		Pressures		Volumes					
Displacement	57.9	Shut In: Instant		Lost Returns	0	Cement Slurry	81.1	Pad	
Top Of Cement	SURFACE	5 Min		Cement Returns	20	Actual Displacement	57.9	Treatment	
Frac Gradient		15 Min		Spacers	20	Load and Breakdown		Total Job	
Rates									
Circulating	2	Mixing	4	Displacement	5	Avg. Job	4		
Cement Left In Pipe	Amount	45 ft	Reason	Shoe Joint					
Frac Ring # 1 @	ID	Frac ring # 2 @	ID	Frac Ring # 3 @	ID	Frac Ring # 4 @	ID		
The Information Stated Herein Is Correct				Customer Representative Signature					

The Road to Excellence Starts with Safety

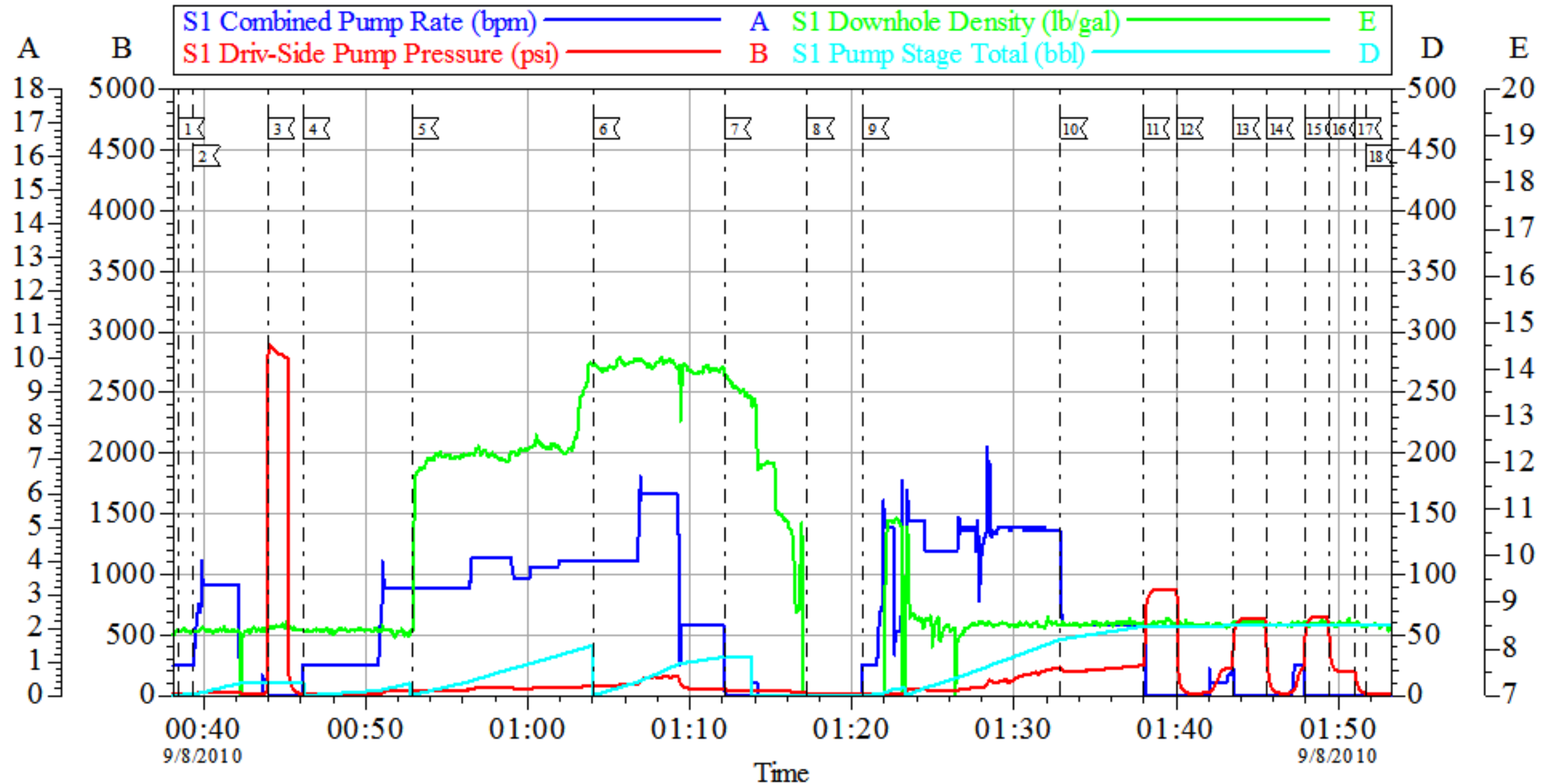
Sold To #: 343492	Ship To #: 2802180	Quote #:	Sales Order #: 7580308
Customer: BILL BARRETT CORPORATION E-BILL		Customer Rep: South, Jodi	
Well Name: GGU SWANSON	Well #: 33D-29-691	API/UWI #: 05-045-19643	
Field: MAMM CREEK	City (SAP): RIFLE	County/Parish: Garfield	State: Colorado
Legal Description:			
Lat: N 39.497 deg. OR N 39 deg. 29 min. 48.17 secs.		Long: W 107.576 deg. OR W -108 deg. 25 min. 26.27 secs.	
Contractor: BARRETT		Rig/Platform Name/Num: PETRO PLUS	
Job Purpose: Cement Surface Casing			Ticket Amount:
Well Type: Development Well		Job Type: Cement Surface Casing	
Sales Person: METLI, MARSHALL		Srvc Supervisor: MAIN, CHAD	MBU ID Emp #: 335770

Activity Description	Date/Time	Cht #	Rate bbl/min	Volume bbl		Pressure psig		Comments
				Stage	Total	Tubing	Casing	
Depart Location Safety Meeting	09/07/2010 22:00							ALL HES PERSONNEL ROLLED OVER FROM ANOTHER JOB
Depart from Service Center or Other Site	09/07/2010 22:05							ONE ELITE, ONE BULK TRUCKS, ONE PICK UP
Arrive At Loc	09/07/2010 23:00							WELL WAS DONE RIG DRILLING ANOTHER WELL OFF LINE CEMENT JOB
Assessment Of Location Safety Meeting	09/07/2010 23:10							LOCATION CLEAN
Pre-Rig Up Safety Meeting	09/07/2010 23:20							ALL HES PERSONNEL
Rig-Up Equipment	09/07/2010 23:30							
Rig-Up Completed	09/08/2010 00:20							
Pre-Job Safety Meeting	09/08/2010 00:30							ALL LOCATION PERSONNEL
Start Job	09/08/2010 00:38							TD 815' CSG 794.32' SJ 45' NO MUD IN HOLE AIR DRILLED
Pressure Test	09/08/2010 00:44						2500.0	
Pump Spacer 1	09/08/2010 00:46		2	20			56.0	H2O
Pump Lead Cement	09/08/2010 00:52		4	50.6			56.0	120 SKS AT 12.3 PPG 2.38 FT3/SK 13.76 GAL/SK
Pump Tail Cement	09/08/2010 01:04		4	30.5			102.0	120 SKS AT 14.2 PPG 1.43 FT3/SK 6.88 GAL/SK HES HAD FULL CIRCULATION WITH 10 BBLS AWAY OF TAIL CEMENT

Cementing Job Log

Activity Description	Date/Time	Cht #	Rate bbl/ min	Volume bbl		Pressure psig		Comments
				Stage	Total	Tubing	Casing	
Shutdown	09/08/2010 01:12							
Drop Top Plug	09/08/2010 01:17							
Pump Displacement	09/08/2010 01:20		5	57.9			82.0	H2O
Bump Plug	09/08/2010 01:37		2	57.9			196.0	HES RETURNED 20 BBLS OF CEMENT TO SURFACE
Check Floats	09/08/2010 01:45						804.0	FLOATS DID NOT HOLD RE-LANDED PLUG TWICE BLED PSI DOWN TO LAND PSI 200 PSI AND SHUT IN WELL
End Job	09/08/2010 01:51						200.0	
Pre-Rig Down Safety Meeting	09/08/2010 02:00							ALL HES PERSONNEL
Rig-Down Equipment	09/08/2010 02:10							
Rig-Down Completed	09/08/2010 02:30							LOCATION LEFT CLEAN
HES or HES Sub-Contractor Equipment Problem - End	09/08/2010 02:31							HES WAITED ON LOCATION FOR NEXT JOB NO ADD HRS CHARGED
Other	09/08/2010 02:32							THANK YOU FOR USING HALLIBURTON GRAND JUNCTION CHAD MAIN AND CREW

BBC SURFACE



Customer: BBC
Well Description: GGU SWANS ON 33D-29-691
Company Rep: JODY SOUTH

Job Date: 08-Sep-2010
Job Type: SURFACE
Cement Supervisor: CHAD MAIN

Sales Order #: 7580308
ADC Used: YES
Elite #: 2/TRAVIS BROWN

OptiCem v6.4.2
08-Sep-10 02:27