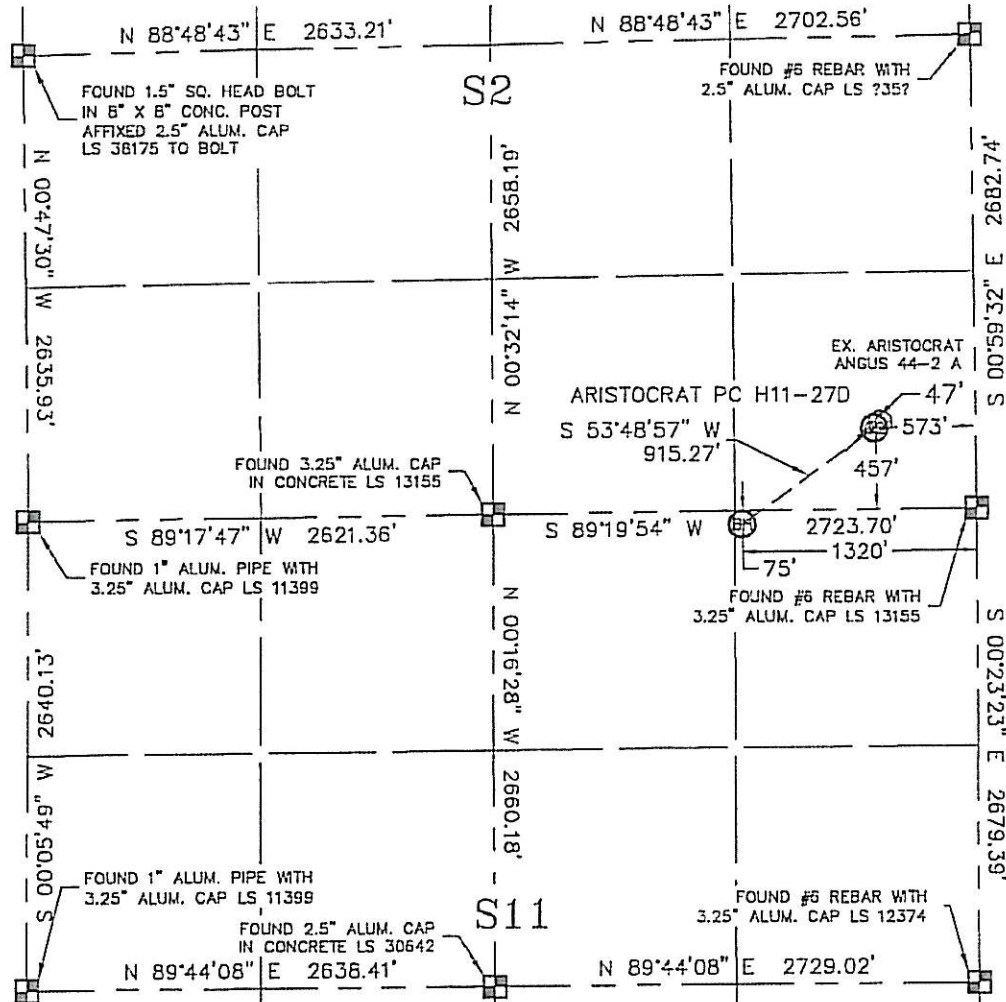


Lat40°, LLC 1635 Foxtrail Drive, Suite 325 Loveland, CO 80538

WELL LOCATION CERTIFICATE

SECTION: 2 & 11
TOWNSHIP: 3N
RANGE: 65W

THIS MAP DOES NOT REPRESENT A BOUNDARY SURVEY



In accordance with a request from Erik Van Deen with Noble Energy Inc.

Lat40°, LLC has determined the surface location of the ARISTOCRAT PC H11-27D to be 457' from the SOUTH line and 573' from the EAST line as measured at right angles from the section line of Section 2, Township 3 North, Range 65 West of the Sixth Principal Meridian, County of Weld, State of Colorado and the bottom hole to be 75' from the NORTH line and 1320' from the EAST line as measured at right angles from the section line of Section 11, Township 3 North, Range 65 West of the Sixth Principal Meridian, County of Weld, State of Colorado.

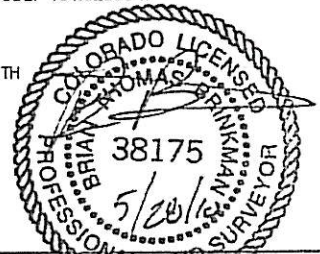
I hereby state that this Well Location Certificate was prepared by me, or under my direct supervision, that the fieldwork was completed on 5/27/10, for and on behalf of Noble Energy Inc. That this is not a Land Survey Plat or an Improvement Survey Plat, and that it is not to be relied upon for establishment of fence, building, or other future improvement lines.

NOTE:

- 1) Bearings shown are Grid Bearings of the Colorado State Plane Coordinate System, North Zone, North American Datum 1983/2007. The lineal dimensions as contained herein are based upon the "U.S. Survey Foot."
- 2) Ground elevations are based on an observed GPS elevation (NAVD 1988 DATUM).
- 3) NEAREST EXISTING WELL: ARISTOCRAT ANGUS 44-2 A 47'
- 4) IMPROVEMENTS: See VISIBLE IMPROVEMENTS exhibit for all visible improvements within 400' of disturbed area.
- 5) SURFACE USE: IRRIGATED CROP, EX. WELL SITE

SURFACE LOCATION
LATITUDE: 40.248387N
LONGITUDE: 104.622727W
PDOP: 1.7
ELEV: 4814'
1/4, 1/4: SE1/4SE1/4
NEAREST PROPERTY LINE: 457' SOUTH

BOTTOM HOLE
LATITUDE: 40.246927N
LONGITUDE: 104.625397W



NOTE

According to Colorado law, you must commence any legal action based upon any defect in this W.L.C. within three years after you discover such defect. In no event, may any action based upon any defect in this survey be commenced more than ten years after the date of the certificate shown hereon. (13-80-105 C.R.S.)

LEGEND

- = ALIQUOT MONUMENT AS DESCRIBED
- = CALCULATED POSITION

Brian T. Brinkman—On behalf of Lat40°, LLC
Colorado Licensed Professional
Land Surveyor No. 38175
PROJECT#: 2010021

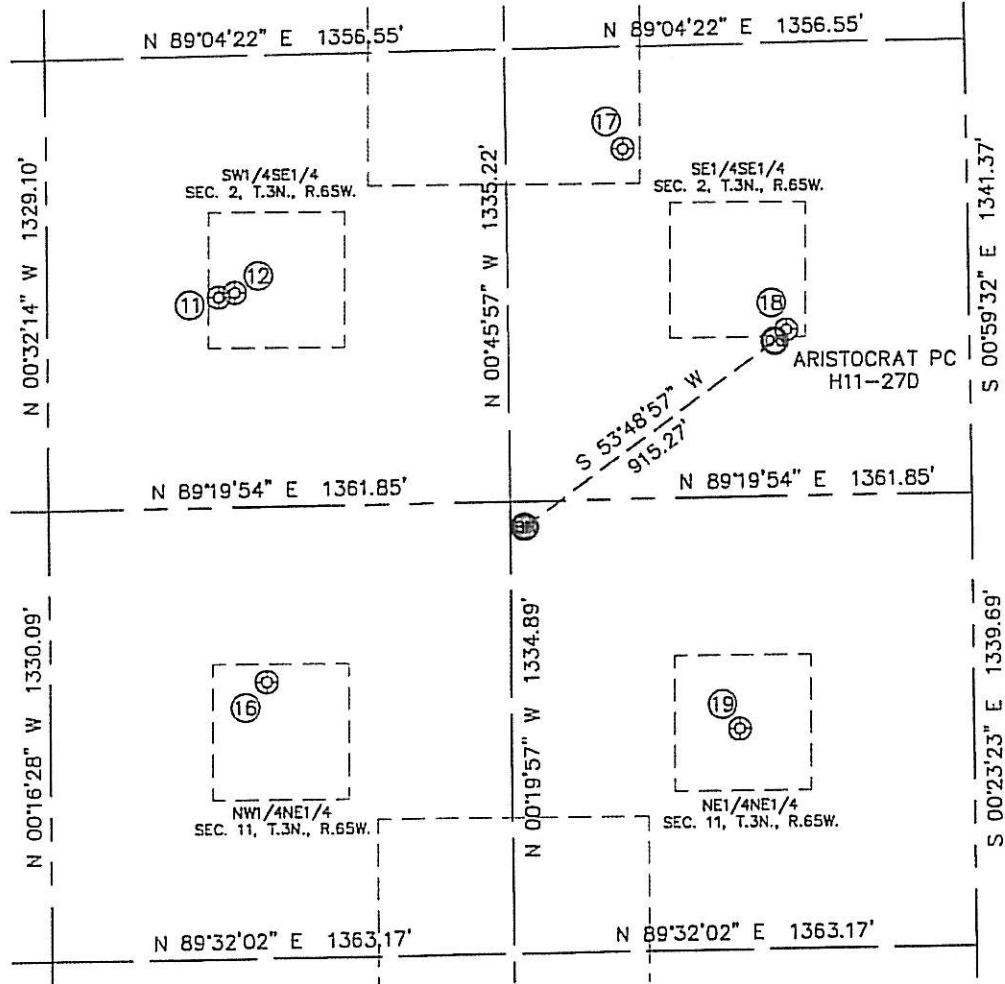
Lat40°, LLC

1635 Foxtrail Drive, Suite 325

Loveland, CO 80538

SITE SKETCH

SECTION: 2 & 11
TOWNSHIP: 3N
RANGE: 65W



⑪

ARISTOCRAT ANGUS 4-8-2
SW1/4SE1/4
619' FSL
2211' FEL
LAT-40.24882°N
LONG-104.62659°W
PDOP: 2.4
ELEV: 4781'

⑫

ARISTOCRAT ANGUS NO. 34-2
SW1/4SE1/4
632' FSL
2163' FEL
LAT-40.24885°N
LONG-104.62842°W
PDOP: 2.4
ELEV: 4783'

⑬

BEEBE DRAW 11-1
NW1/4NE1/4
518' FNL
2084' FEL
LAT-40.24570°N
LONG-104.62813°W
PDOP: 1.2
ELEV: 4808'

⑭

ARISTOCRAT ANGUS 44-2
SE1/4SE1/4
1034' FSL
1012' FEL
LAT-40.24996°N
LONG-104.62431°W
PDOP: 1.5
ELEV: 4806'

⑮

ARISTOCRAT ANGUS 44-2 A
SE1/4SE1/4
490' FSL
539' FEL
LAT-40.24847°N
LONG-104.62260°W
PDOP: 1.8
ELEV: 4815'

⑯

ARISTOCRAT 11-2
NE1/4NE1/4
686' FNL
690' FEL
LAT-40.24524°N
LONG-104.62314°W
PDOP: 1.4
ELEV: 4827'

