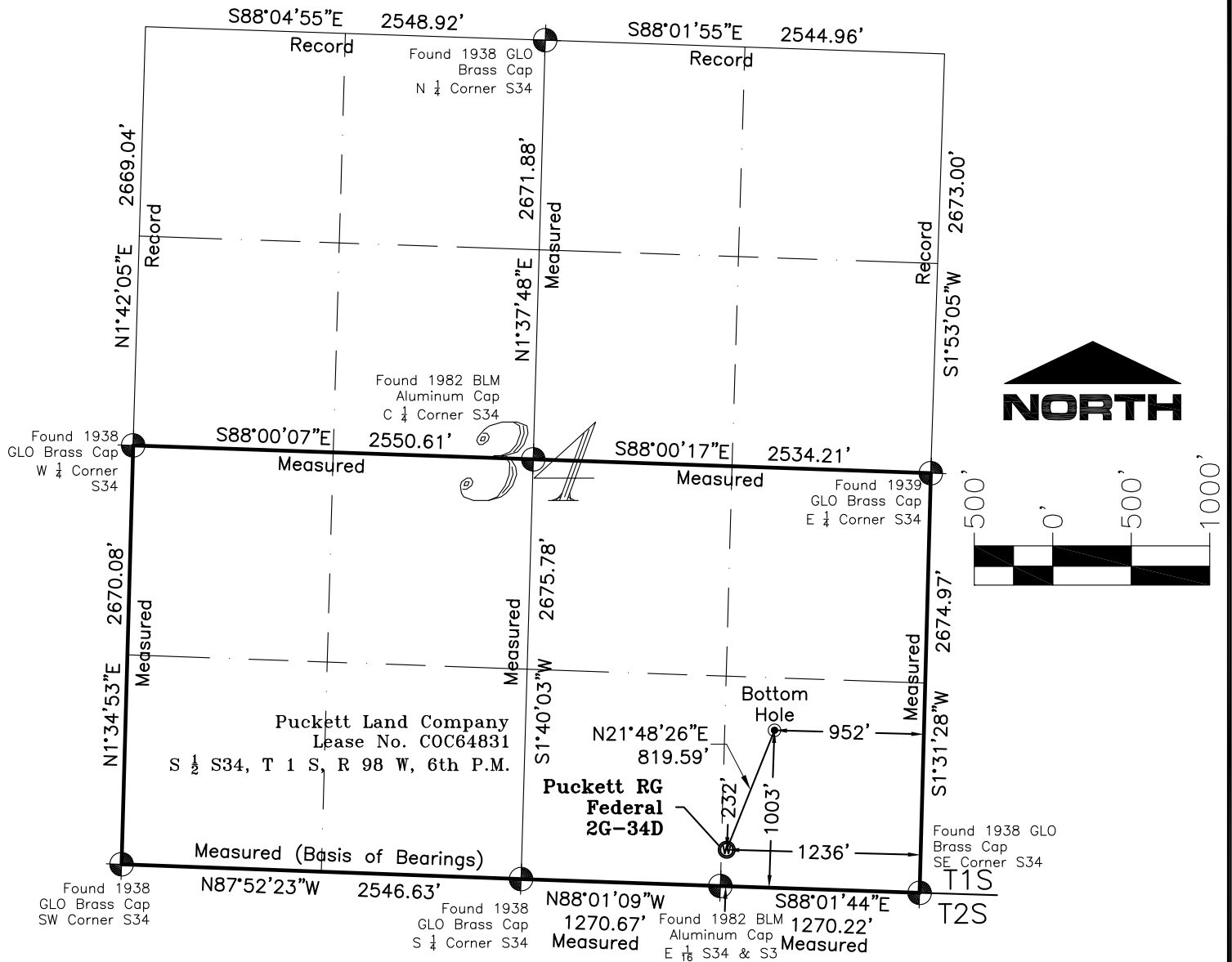


T1S, R98W, 6th P.M.



NOTES:

1. GEODETIC POSITIONS ARE SHOWN IN DECIMAL DEGREES BASED ON NAD83.
2. UNITS OF LINEAR MEASUREMENT: U.S. SURVEY FOOT
3. ELEVATIONS ARE BASED ON NAVD 88.
4. ALL SURFACE (SHL) AND BOTTOM (BHL) HOLE LOCATIONS ARE MEASURED AT 90° ANGLES FROM SECTION LINES.
5. BASIS OF BEARING: N87°52'23"W BETWEEN FOUND MONUMENTS AS SHOWN HEREON.
6. EXISTING GROUND ELEVATION: 6744.0' PROPOSED PAD ELEVATION: 6743.45'.
7. SURFACE USE: RANGELAND
8. USGS QUAD MAPS: SQUARE S RANCH & WOLF RIDGE
9. GPS OPERATOR: MIKE NASTAL OBSERVED AN AVERAGE PDOP OF ≤3.0 FOR ALL SURVEY MEASUREMENTS DEPICTED ON THIS AND SUBSEQUENT SHEETS. ALL GPS OBSERVATIONS ARE IN COMPLIANCE WITH COGCC RULE NO. 215

Legend:

- Found Monument as Described Hereon
- Surface Hole Location (SHL)
- Proposed Bottom Hole Location (BHL)

SURVEYORS STATEMENT:

I, ELWOOD BARRY GILES, BEING A REGISTERED LAND SURVEYOR IN THE STATE OF COLORADO, DO HERBY CERTIFY THAT THIS PLAT REPRESENTS A SURVEY PERFORMED BY ME OR UNDER MY DIRECT SUPERVISION MAY 27, 2010 AND IS TRUE TO THE BEST OF MY KNOWLEDGE AND BELIEF.

Elwood Barry Giles 25 AUG, 2010
ELWOOD BARRY GILES
COLORADO LS 38150 DATE

WELL No.	SECTION LINES TIES		NAD 83	
RG FED. 2G-34D	FOOTAGES	FOOTAGES	LATITUDE	LONGITUDE
SURFACE HOLE	232' FSL	1236' FEL	39.913203°	108.373816°
BOTTOM HOLE	1003' FSL	952' FEL	39.915317°	108.372819°



SGM INC.
118 W. 6th Street, Suite 200
Glenwood Springs, Colorado 81601
(970) 945-1004 (FAX 945-5948)
Meeker, Colorado (970) 878-5180

Scale: 1"=1000'

Sheet No. 1 of 11

RG Fed 2G-34D

Well Location Plat for Puckett Land Company Well RG Federal 2G-34D
SE 1/4 SE 1/4 Sect. 34, T. 1 S., R. 98W., 6th P.M., Rio Blanco County, CO

Job# 2008-111.008 Date: 8.24.2010 By: reb File: PLC Ryan.dwg