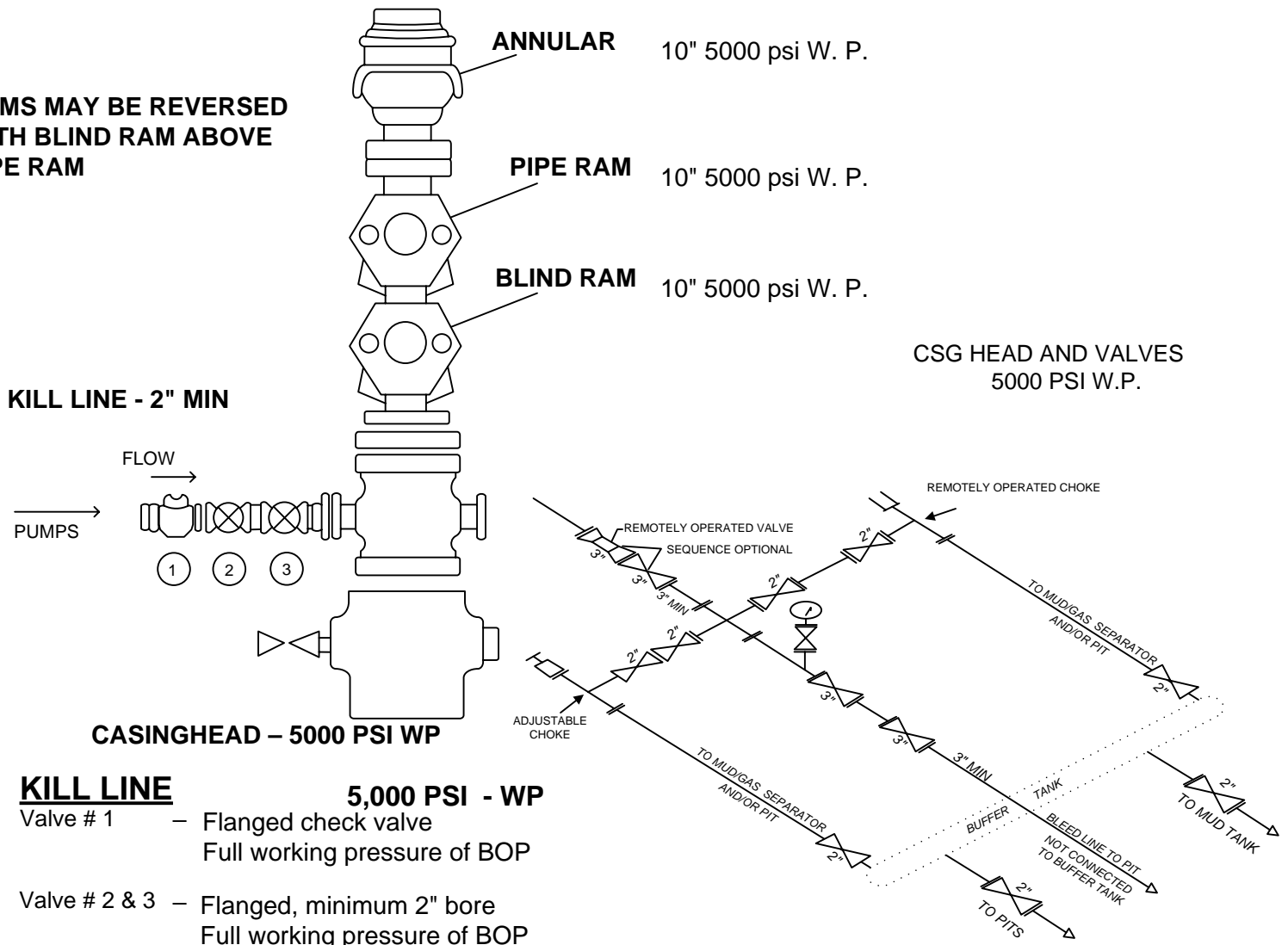


# MINIMUM BOP Requirements

5000 PSI

**FILL LINE ABOVE THE UPPERMOST PREVENTER**

**RAMS MAY BE REVERSED  
WITH BLIND RAM ABOVE  
PIPE RAM**



## KILL LINE

**5,000 PSI - WP**

Valve # 1 – Flanged check valve  
Full working pressure of BOP

Valve # 2 & 3 – Flanged, minimum 2" bore  
Full working pressure of BOP

**5M CHOKE MANIFOLD EQUIPMENT – CONFIGURATION MAY VARY**

## GENERAL RULES AND RECOMMENDATIONS

All lines to manifold are to be at right angles (90 deg.). No 45 deg. Angles are to be used.  
Blind flanges are to be used for blanking.  
All studs and nuts are to be installed on all flanges.