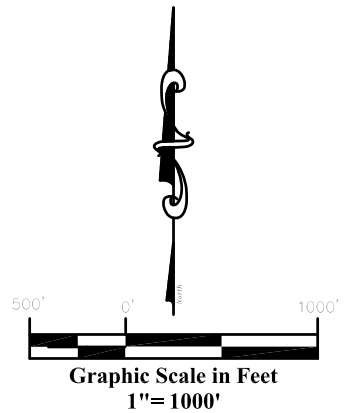
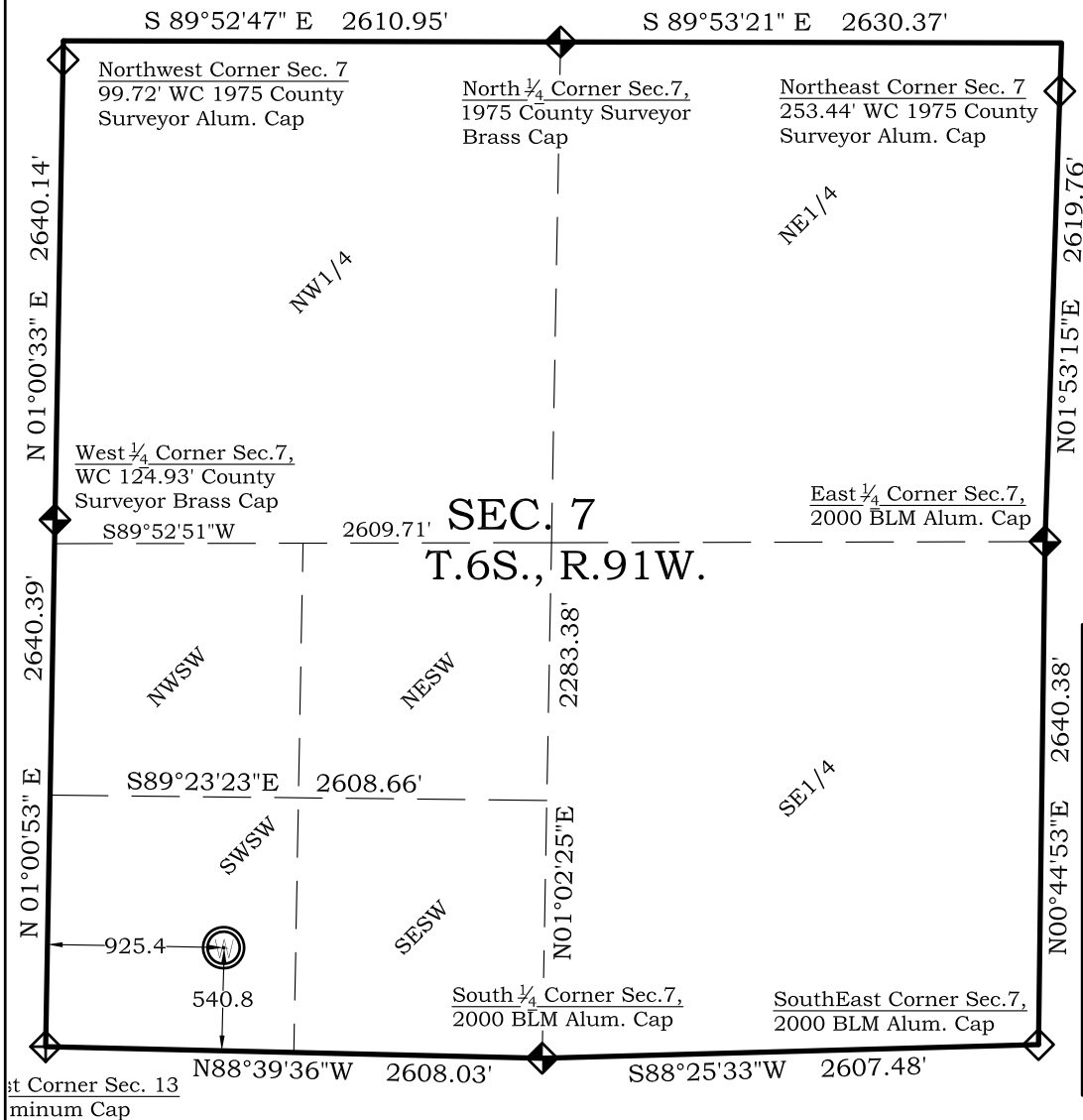


As Drilled Location Plat

Frei A21 Well

Section 7, Township 6 South, Range 91 West



Legend

- ◆ - Field Surveyed Section Corner
- ◆ - Field Surveyed Quarter Corner
- ⊙ - Calculated Section Corner Location
- - Field Surveyed 1/6 Corner

Frei A21 As Drilled Surface Location	
540' FSL	
925' FWL	
Gnd El= 5544.9	
NAD83	
Lat: 39.535979839°N	
Long: 107.603240673°W	
NAD27	
Lat: 39.535999222°N	
Long: 107.602627668°W	
UTM 13 NORTH	
NAD 1983	
Northing	
14368390.263	
Easting	
906417.557	

Prepared For Antero Resources
As Drilled Frei A21 Well Situate in The SW 1/4 SW 1/4 Section
7, Township 6 South, Range 91 West of the 6 th. Principal
Meridian, County of Garfield, State of Colorado

SURVEYOR'S CERTIFICATE

I, SCOTT E. AIBNER, A REGISTERED LAND SURVEYOR, LICENSED UNDER THE LAWS OF THE STATE OF COLORADO DO HEREBY CERTIFY THAT THE SURVEY SHOWN HEREON WAS PREPARED BY RIVER VALLEY SURVEY, INC., FOR ANTERO RESOURCES, BY ME OR UNDER MY DIRECT SUPERVISION AND THAT THIS PLAT IS A TRUE REPRESENTATION THEREOF.

BY: 
 SCOTT E. AIBNER, COLORADO REG. NO. 31143

Notes

- 1.) LATITUDE AND LONGITUDE COORDINATES ARE DIFFERENTIALLY CORRECTED AND BASED ON PUBLISHED NGS CONTROL STATION "WDP-5". SYSTEM: UTM ZONE: 13 NORTH DATUM: NAD 1983 (CONUS)
- 2.) ELEVATIONS ARE BASED ON NGVD OF 1929.
- 3.) ALL AS DRILLED HOLE LOCATIONS ARE MEASURED 90 DEGREES FROM SECTION LINE.
- 4.) USGS QUADRANGLE MAP "SILT CO".
- 5.) CURRENT SURFACE LAND USE: GRAVEL PIT
- 6.) PDOP AT TIME OF LOCATION OF SURFACE WELL = 1.3



River Valley Survey, Inc.
 110 East 3rd. Street, Suite 207
 Rifle, Colorado 81650
 Ph: 970-379-7846

Project: Frei A PAD

Field Date: 08-24-10

Date: 09-03-2010

Scale: 1"= 1000'

Sheet: 1 of 1

As Drilled Well Location Plat
Prepared For Antero Resources

Situate In:
 SW Section 7, T6S., R. 91 W. of the 6th
 P.M., Garfield County, Colorado

