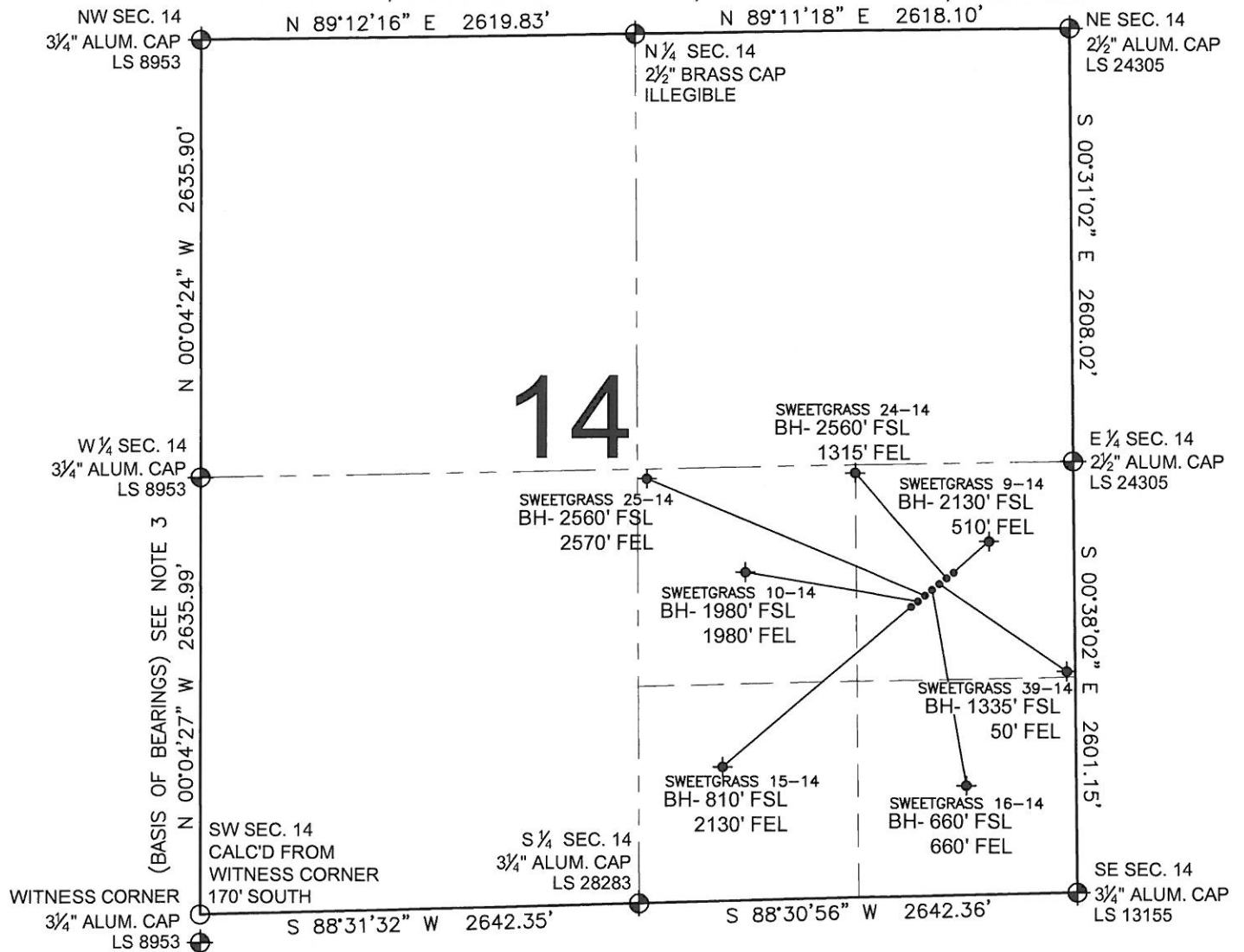


# PAD DRAWING - SWEETGRASS 7 PAD

SECTION 14, TOWNSHIP 1 NORTH, RANGE 68 WEST, 6TH P.M.



## LEGEND

- = EXISTING MONUMENT   
 = BOTTOM HOLE   
 BH= BOTTOM HOLE  
 = PROPOSED WELL   
 = EXISTING WELL

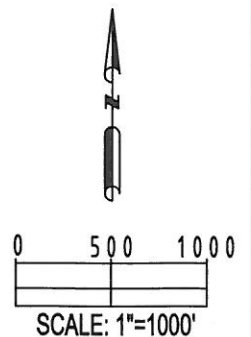
## NOTES:

- THIS SURVEY WAS DONE BY GPS METHODS AND CONFORMS TO THE MINIMUM STANDARDS SET BY THE C.O.G.C.C., RULE NO. 215
- ELEVATIONS SHOWN AT THE WELL HEAD, AS WELL AS HORIZONTAL CONTROL, ARE BASED ON GPS-RTK VALUES DERIVED FROM DOING 2-HOUR STATIC GPS SESSIONS AND REDUCTIONS USING O.P.U.S. SOLUTIONS.  
VERTICAL = NAVD88; HORIZONTAL = NAD83/92
- THE BEARINGS SHOWN HEREON ARE BASED ON GPS OBSERVATIONS BETWEEN THE MONUMENTS SHOWN HEREON AS FOUND ON THE FIELD DATE BELOW.
- DISTANCES SHOWN ARE AT GROUND LEVEL, AS MEASURED IN THE FIELD, WITH TIES TO WELLS MEASURED AT A PERPENDICULAR TO SECTION LINES.

## NOTES:

SWEETGRASS 15-14 TO BE AT 1828' FSL, 880' FEL.  
 BOTTOM HOLE AT 810' FSL & 2130' FEL.  
 SWEETGRASS 10-14 TO BE AT 1834' FSL, 872' FEL.  
 BOTTOM HOLE AT 1980' FSL & 1980' FEL.  
 SWEETGRASS 25-14 TO BE AT 1840' FSL, 864' FEL.  
 BOTTOM HOLE AT 2560' FSL & 2570' FEL.  
 SWEETGRASS 16-14 TO BE AT 1846' FSL, 856' FEL.  
 BOTTOM HOLE AT 660' FSL & 660' FEL.  
 SWEETGRASS 39-14 TO BE AT 1852' FSL, 848' FEL.  
 BOTTOM HOLE AT 1335' FSL & 50' FEL.  
 SWEETGRASS 24-14 TO BE AT 1858' FSL, 840' FEL.  
 BOTTOM HOLE AT 2560' FSL & 1315' FEL.  
 SWEETGRASS 9-14 TO BE AT 1864' FSL, 832' FEL.  
 BOTTOM HOLE AT 2130' FSL & 510' FEL.

KERR-MCGEE OIL & GAS ONSHORE LP



## REVISIONS

INITIAL	DATE

PREPARED BY:

**PFS**

Petroleum Field Services, LLC  
1801 W. 13th Ave.  
Denver, CO 80204



FIELD DATE:  
05-07-10

DRAWING DATE:  
05-19-10

BY:  
SMF

PAD NAME:  
SWEETGRASS 7 PAD

SURFACE LOCATION:

WELD COUNTY, COLORADO  
NE 1/4 SE 1/4, SEC. 14, T1N, R68W