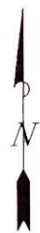


Construction Legend
 — Proposed Culvert

EnCana Oil & Gas (USA) Inc.

**Well Pad K28NW (Expansion)
 SEC. 28, T6S, R93W, 6th P.M.**



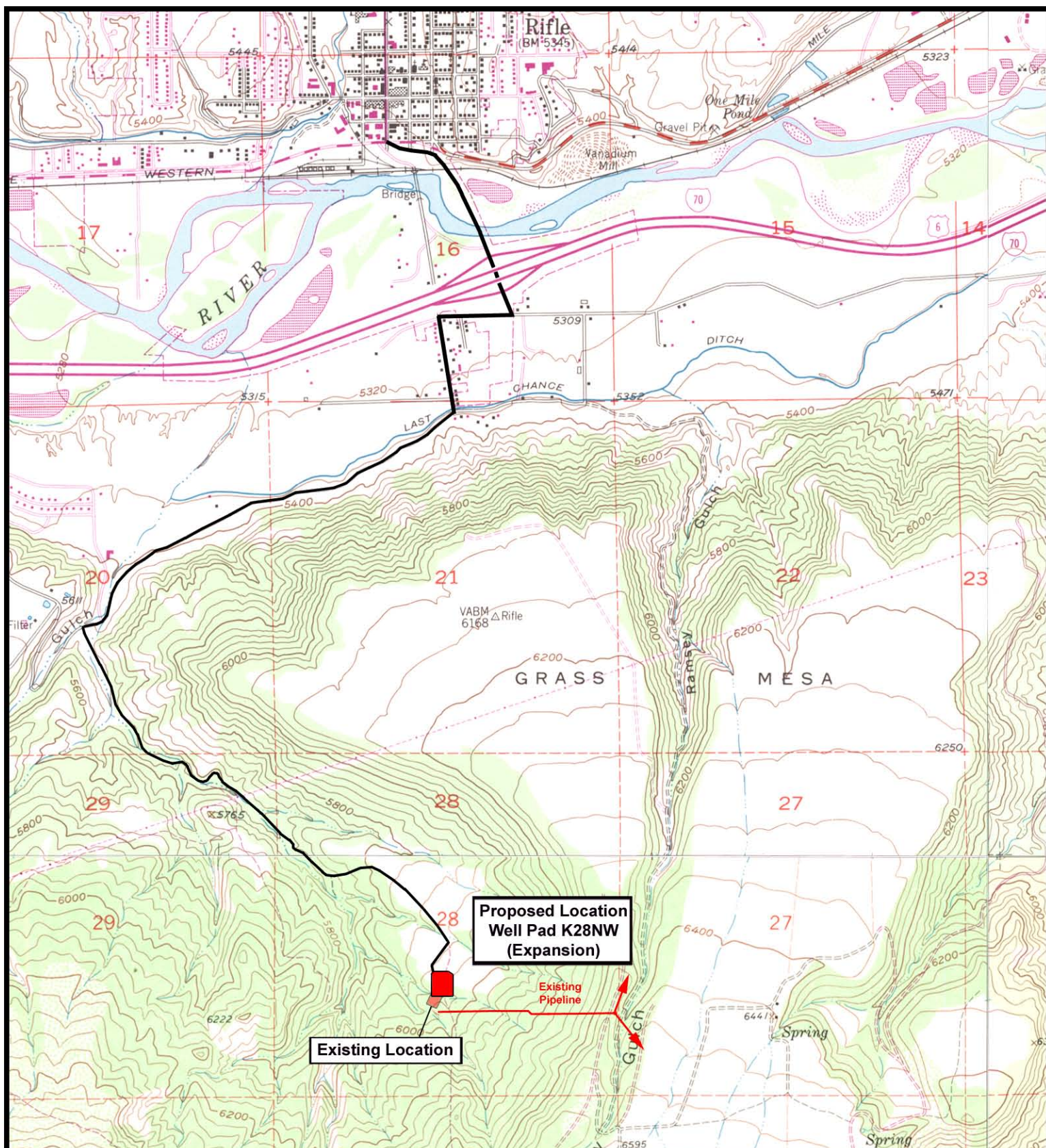
**Tri-State
 Land Surveying Inc.**
 (435) 781-2501
 180 North Vernal Ave. Vernal, Utah 84078

SCALE: 1" = 2,000'
DRAWN BY: JAS
DATE: 06-15-2010

Legend

— Existing Road

TOPOGRAPHIC MAP
"B"
SHEET 10 OF 11



EnCana Oil & Gas (USA) Inc.

**Well Pad K28NW (Expansion)
SEC. 28, T6S, R93W, 6th P.M.**



**Tri-State
Land Surveying Inc.**
(435) 781-2501
180 North Vernal Ave. Vernal, Utah 84078

SCALE: 1" = 2,000'
DRAWN BY: JAS
DATE: 06-15-2010

Legend
Existing Road
Existing Pipeline

TOPOGRAPHIC MAP
"D"

SHEET
11
OF 11