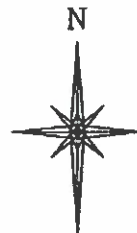
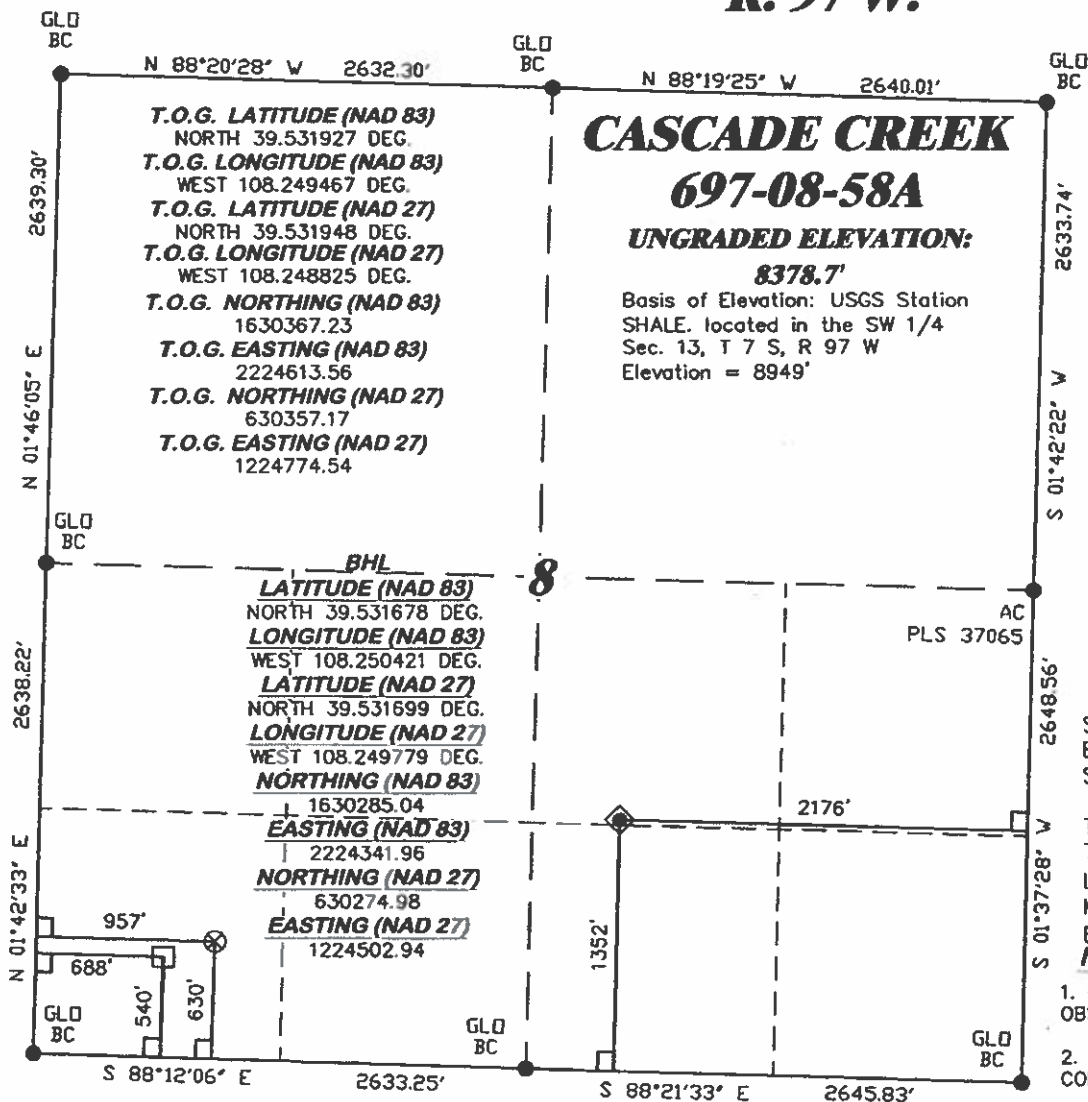


R. 97 W.



SCALE 1" = 1000'

T. 6 S.

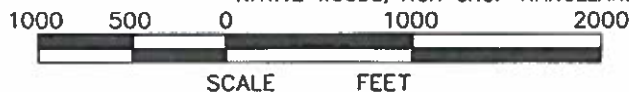
LATITUDE (NAD 83)
NORTH 39.533903 DEG.
LONGITUDE (NAD 83)
WEST 108.241868 DEG.
LATITUDE (NAD 27)
NORTH 39.533924 DEG.
LONGITUDE (NAD 27)
WEST 108.241226 DEG.
NORTHING (NAD 83)
1631022.17
EASTING (NAD 83)
2226777.77
NORTHING (NAD 27)
631012.12
EASTING (NAD 27)
1226938.71

BASIS OF BEARING/DATUM
SPCS CO CENTRAL NAD 27
BASED ON NGS TRIANGULATION
STATION "SHALE"

THE BASIS OF BEARINGS FOR
THIS SURVEY IS THE NORTH
LINE OF THE NE $\frac{1}{4}$ OF SECTION 8,
MONUMENTED BY GLO BC'S AND
BEARING N 88° 19' 25" W.

NOTES

1. GPS OPERATOR JAMES SEAL
OBSERVED A POOP OF 0.9.
2. ALL GPS OBSERVATIONS ARE IN
COMPLIANCE WITH COGCC RULE No.215.
3. EXISTING IMPROVEMENTS WITHIN 400'
OF LOCATION. SEE EXHIBIT 2D.
4. SURROUNDING SURFACE USE IS
NATIVE WOODS, NON CROP RANGELAND.



LEGEND

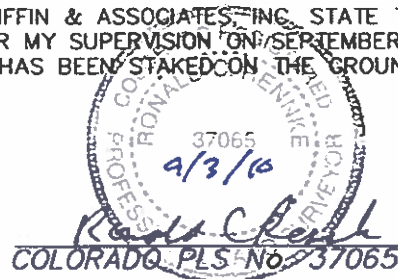
- ◆ WELL LOCATION
- APPROX. BHL
- ⊗ APPROX. TOP OF GAS (T.O.G.) LOCATION
- FOUND MONUMENT
- └ DENOTES 90° TIE

SURVEYOR'S STATEMENT

I, RONALD C. RENNKE, AN EMPLOYEE AND AGENT ON BEHALF OF D.R. GRIFFIN & ASSOCIATES, INC. STATE THE PLAT HEREON IS A CORRECT REPRESENTATION OF A SURVEY MADE UNDER MY SUPERVISION ON SEPTEMBER 1, 2010 OF THE SHOWN CASCADE CREEK 697-08-58A AND THAT THE LOCATION HAS BEEN STAKED ON THE GROUND AS SHOWN ON THE PLAT.

Notice: In accordance with Colorado State Law, any legal action based upon any defect in this survey plat must commence within three (3) years after first discovery of such defect. In no event, may any action based upon any defect in this survey plat be commenced more than ten (10) years from the date of certification shown hereon.

CC 697-08-53 PAD



DRG RIFFIN & ASSOCIATES, INC.
1414 ELK ST., ROCK SPRINGS, WY 82901

**PLAT OF DRILLING LOCATION IN THE
NWSE OF SECTION 8
FOR OXY USA WTP LP**

**1352' F/SL & 2176' F/EL, SECTION 8,
T. 6 S., R. 97 W., 6th P.M.
GARFIELD COUNTY, COLORADO**

DRAWN: 9/3/10 - DEH

SCALE: 1" = 1000'

REVISED: N/A

DRG JOB No. 11769

EXHIBIT 1