



Project: PLATEAU  
Site: MY WAY RANCH 8-4 PAD  
Well: MY WAY RANCH FEDERAL 5-15  
Wellbore: ORIG HOLE  
Design: PLAN 2

# OXY USA MID-CON

WELL DETAILS: MY WAY RANCH FEDERAL 5-15

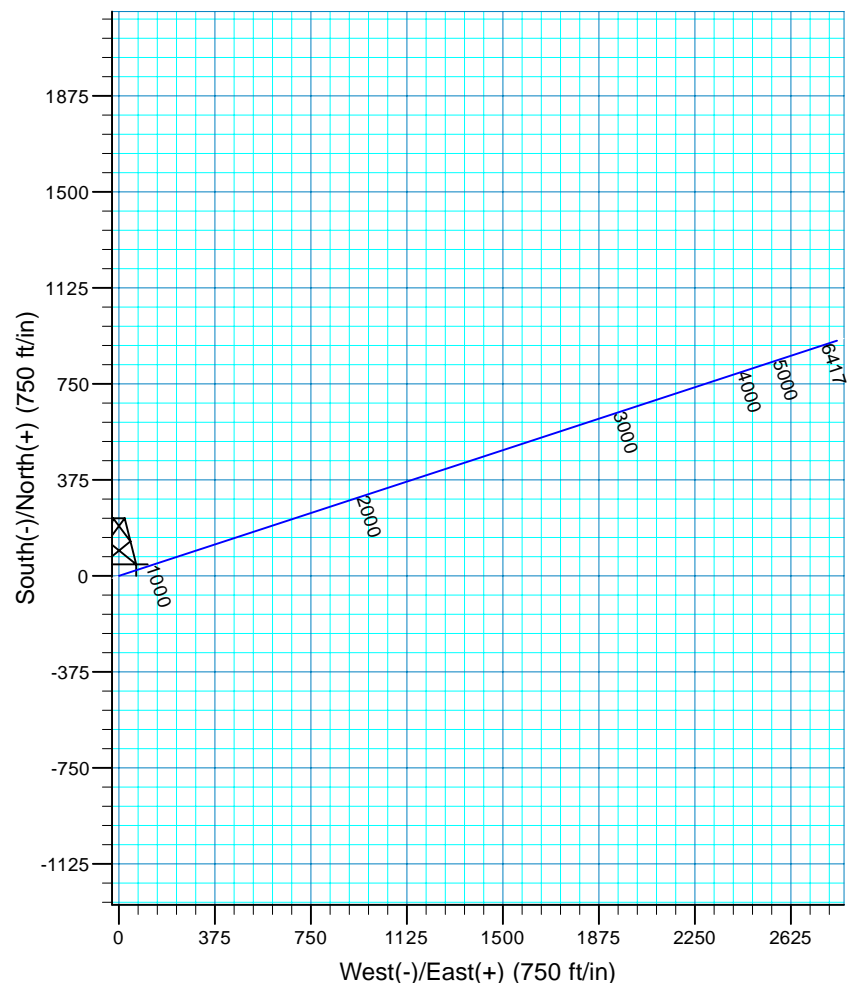
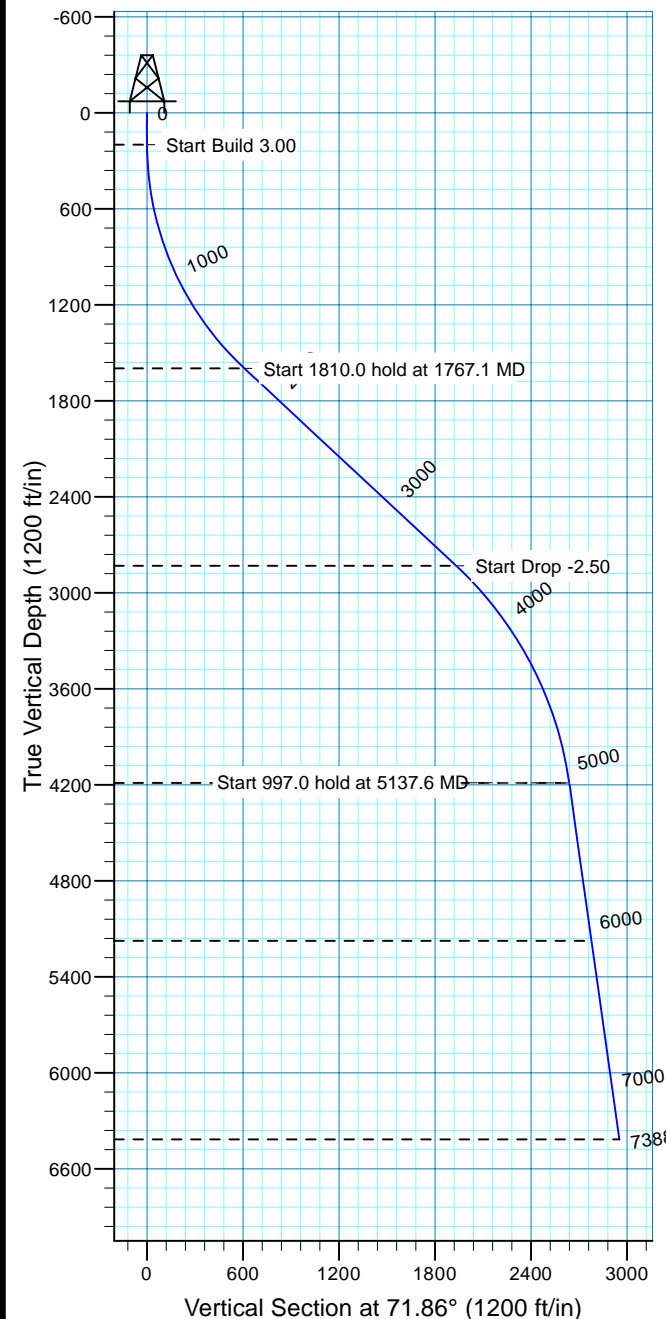
ORIGINAL KB @ 6887.0ft 6869.0

+N/-S	+E/-W	Northing	Easting	Latitude	Longitude	Slot
0.0	0.0	510567.20	1316567.04	39° 12' 37.227 N	107° 54' 44.068 W	



Azimuths to True North  
Magnetic North: 10.37°

Magnetic Field  
Strength: 52216.4snT  
Dip Angle: 65.55°  
Date: 7/30/2010  
Model: IGRF200510



## FORMATION TOP DETAILS

No formation data is available

## PLAN 2 (MY WAY RANCH FEDERAL 5-15/ORIG HOLE)

Created By: Ron Bevans Date: 2007-01-09

### PROJECT DETAILS: PLATEAU

Geodetic System: US State Plane 1927 (Exact solution)  
Datum: NAD 1927 (NADCON CONUS)  
Ellipsoid: Clarke 1866  
Zone: Colorado Central 502

System Datum: Mean Sea Level  
Local North: True

## SECTION DETAILS

Sec	MD	Inc	Azi	TVD	+N/-S	+E/-W	Dleg	TFace	V Sect	Target
1	0.0	0.00	0.00	0.0	0.0	0.0	0.00	0.00	0.0	
2	200.0	0.00	0.00	200.0	0.0	0.0	0.00	0.00	0.0	
3	767.1	47.01	71.86	1597.1	189.1	577.5	3.00	71.86	607.7	
4	577.1	47.01	71.86	2831.2	601.3	1835.7	0.00	0.00	1931.7	
5	137.6	8.00	71.86	4188.7	821.3	2507.5	2.50	180.00	2638.6	
6	134.6	8.00	71.86	5176.0	864.5	2639.3	0.00	0.00	2777.3	MYR FED 5-15 TARGET
7	387.8	8.00	71.86	6417.0	918.8	2805.1	0.00	0.00	2951.7	



# **OXY USA MID-CON**

**PLATEAU**

**MY WAY RANCH 8-4 PAD**

**MY WAY RANCH FEDERAL 5-15**

**MY WAY RANCH FEDERAL 5-15**

**ORIG HOLE**

**Plan: PLAN 2**

## **Standard Planning Report - Geographic**

**30 July, 2010**



# OXY

## Planning Report - Geographic

<b>Database:</b>	HOPSPP	<b>Local Co-ordinate Reference:</b>	Well MY WAY RANCH FEDERAL 5-15
<b>Company:</b>	OXY USA MID-CON	<b>TVD Reference:</b>	ORIGINAL KB @ 6887.0ft
<b>Project:</b>	PLATEAU	<b>MD Reference:</b>	ORIGINAL KB @ 6887.0ft
<b>Site:</b>	MY WAY RANCH 8-4 PAD	<b>North Reference:</b>	True
<b>Well:</b>	MY WAY RANCH FEDERAL 5-15	<b>Survey Calculation Method:</b>	Minimum Curvature
<b>Wellbore:</b>	ORIG HOLE		
<b>Design:</b>	PLAN 2		

<b>Project</b>	PLATEAU		
<b>Map System:</b>	US State Plane 1927 (Exact solution)	<b>System Datum:</b>	Mean Sea Level
<b>Geo Datum:</b>	NAD 1927 (NADCON CONUS)		
<b>Map Zone:</b>	Colorado Central 502		

Site		MY WAY RANCH 8-4 PAD			
Site Position:		Northing:	510,567.20 ft	Latitude:	39° 12' 37.227 N
From:	Map	Easting:	1,316,567.04 ft	Longitude:	107° 54' 44.068 W
Position Uncertainty:	0.0 ft	Slot Radius:	0.000 in	Grid Convergence:	-1.52

Well	MY WAY RANCH FEDERAL 5-15					
Well Position	+N/-S	0.0 ft	Northing:	510,567.20 ft	Latitude:	39° 12' 37.227 N
	+E/-W	0.0 ft	Easting:	1,316,567.04 ft	Longitude:	107° 54' 44.068 W
Position Uncertainty		0.0 ft	Wellhead Elevation:	18.0 ft	Ground Level:	6,869.0 ft

<b>Wellbore</b>	ORIG HOLE				
<b>Magnetics</b>	<b>Model Name</b>	<b>Sample Date</b>	<b>Declination (°)</b>	<b>Dip Angle (°)</b>	<b>Field Strength (nT)</b>
	IGRF200510	7/30/2010	10.37	65.55	52,216

<b>Design</b>	PLAN 2			
<b>Audit Notes:</b>				
<b>Version:</b>	<b>Phase:</b>	PROTOTYPE	<b>Tie On Depth:</b>	0.0
<b>Vertical Section:</b>	<b>Depth From (TVD)</b>	<b>+N/-S (ft)</b>	<b>+E/-W (ft)</b>	<b>Direction (°)</b>
	0.0	0.0	0.0	71.86

<b>Plan Sections</b>										
Measured Depth (ft)	Inclination (°)	Azimuth (°)	Vertical Depth (ft)	+N/-S (ft)	+E/-W (ft)	Dogleg Rate (°/100ft)	Build Rate (°/100ft)	Turn Rate (°/100ft)	TFO (°)	Target
0.0	0.00	0.00	0.0	0.0	0.0	0.00	0.00	0.00	0.00	
200.0	0.00	0.00	200.0	0.0	0.0	0.00	0.00	0.00	0.00	
1,767.1	47.01	71.86	1,597.1	189.1	577.5	3.00	3.00	0.00	71.86	
3,577.1	47.01	71.86	2,831.2	601.3	1,835.7	0.00	0.00	0.00	0.00	
5,137.6	8.00	71.86	4,188.7	821.3	2,507.5	2.50	-2.50	0.00	180.00	
6,134.6	8.00	71.86	5,176.0	864.5	2,639.3	0.00	0.00	0.00	0.00	MYR FED 5-15 TARC
7,387.8	8.00	71.86	6,417.0	918.8	2,805.1	0.00	0.00	0.00	0.00	



# OXY

## Planning Report - Geographic

<b>Database:</b>	HOPSP	<b>Local Co-ordinate Reference:</b>	Well MY WAY RANCH FEDERAL 5-15
<b>Company:</b>	OXY USA MID-CON	<b>TVD Reference:</b>	ORIGINAL KB @ 6887.0ft
<b>Project:</b>	PLATEAU	<b>MD Reference:</b>	ORIGINAL KB @ 6887.0ft
<b>Site:</b>	MY WAY RANCH 8-4 PAD	<b>North Reference:</b>	True
<b>Well:</b>	MY WAY RANCH FEDERAL 5-15	<b>Survey Calculation Method:</b>	Minimum Curvature
<b>Wellbore:</b>	ORIG HOLE		
<b>Design:</b>	PLAN 2		

Planned Survey									
Measured Depth (ft)	Inclination (°)	Azimuth (°)	Vertical Depth (ft)	+N/-S (ft)	+E/-W (ft)	Map Northing (ft)	Map Easting (ft)	Latitude	Longitude
0.0	0.00	0.00	0.0	0.0	0.0	510,567.20	1,316,567.04	39° 12' 37.227 N	107° 54' 44.068 W
100.0	0.00	0.00	100.0	0.0	0.0	510,567.20	1,316,567.04	39° 12' 37.227 N	107° 54' 44.068 W
200.0	0.00	0.00	200.0	0.0	0.0	510,567.20	1,316,567.04	39° 12' 37.227 N	107° 54' 44.068 W
300.0	3.00	71.86	300.0	0.8	2.5	510,567.95	1,316,569.55	39° 12' 37.235 N	107° 54' 44.037 W
400.0	6.00	71.86	399.6	3.3	9.9	510,570.20	1,316,577.07	39° 12' 37.259 N	107° 54' 43.942 W
500.0	9.00	71.86	498.8	7.3	22.3	510,573.93	1,316,589.57	39° 12' 37.299 N	107° 54' 43.784 W
600.0	12.00	71.86	597.1	13.0	39.7	510,579.14	1,316,607.03	39° 12' 37.355 N	107° 54' 43.564 W
700.0	15.00	71.86	694.3	20.3	61.8	510,585.81	1,316,629.40	39° 12' 37.427 N	107° 54' 43.283 W
800.0	18.00	71.86	790.2	29.1	88.8	510,593.93	1,316,656.61	39° 12' 37.514 N	107° 54' 42.940 W
900.0	21.00	71.86	884.4	39.5	120.6	510,603.47	1,316,688.60	39° 12' 37.617 N	107° 54' 42.537 W
1,000.0	24.00	71.86	976.8	51.4	156.9	510,614.42	1,316,725.26	39° 12' 37.735 N	107° 54' 42.075 W
1,100.0	27.00	71.86	1,067.1	64.8	197.8	510,626.72	1,316,766.51	39° 12' 37.867 N	107° 54' 41.555 W
1,200.0	30.00	71.86	1,154.9	79.6	243.2	510,640.36	1,316,812.23	39° 12' 38.014 N	107° 54' 40.979 W
1,300.0	33.00	71.86	1,240.2	95.9	292.8	510,655.30	1,316,862.29	39° 12' 38.175 N	107° 54' 40.348 W
1,400.0	36.00	71.86	1,322.6	113.5	346.6	510,671.50	1,316,916.56	39° 12' 38.349 N	107° 54' 39.664 W
1,500.0	39.00	71.86	1,401.9	132.5	404.5	510,688.90	1,316,974.89	39° 12' 38.536 N	107° 54' 38.929 W
1,600.0	42.00	71.86	1,477.9	152.7	466.2	510,707.47	1,317,037.12	39° 12' 38.736 N	107° 54' 38.145 W
1,700.0	45.00	71.86	1,550.5	174.1	531.6	510,727.15	1,317,103.07	39° 12' 38.948 N	107° 54' 37.314 W
1,767.1	47.01	71.86	1,597.1	189.1	577.5	510,740.95	1,317,149.33	39° 12' 39.096 N	107° 54' 36.732 W
1,800.0	47.01	71.86	1,619.5	196.6	600.3	510,747.83	1,317,172.39	39° 12' 39.170 N	107° 54' 36.441 W
1,900.0	47.01	71.86	1,687.7	219.4	669.9	510,768.74	1,317,242.49	39° 12' 39.395 N	107° 54' 35.558 W
2,000.0	47.01	71.86	1,755.9	242.2	739.4	510,789.66	1,317,312.58	39° 12' 39.620 N	107° 54' 34.675 W
2,100.0	47.01	71.86	1,824.1	264.9	808.9	510,810.57	1,317,382.68	39° 12' 39.845 N	107° 54' 33.791 W
2,200.0	47.01	71.86	1,892.2	287.7	878.4	510,831.49	1,317,452.78	39° 12' 40.070 N	107° 54' 32.908 W
2,300.0	47.01	71.86	1,960.4	310.5	947.9	510,852.41	1,317,522.87	39° 12' 40.296 N	107° 54' 32.025 W
2,400.0	47.01	71.86	2,028.6	333.2	1,017.4	510,873.32	1,317,592.97	39° 12' 40.521 N	107° 54' 31.142 W
2,500.0	47.01	71.86	2,096.8	356.0	1,087.0	510,894.24	1,317,663.07	39° 12' 40.746 N	107° 54' 30.258 W
2,600.0	47.01	71.86	2,165.0	378.8	1,156.5	510,915.15	1,317,733.17	39° 12' 40.971 N	107° 54' 29.375 W
2,700.0	47.01	71.86	2,233.2	401.6	1,226.0	510,936.07	1,317,803.26	39° 12' 41.196 N	107° 54' 28.492 W
2,800.0	47.01	71.86	2,301.3	424.3	1,295.5	510,956.98	1,317,873.36	39° 12' 41.421 N	107° 54' 27.609 W
2,900.0	47.01	71.86	2,369.5	447.1	1,365.0	510,977.90	1,317,943.46	39° 12' 41.646 N	107° 54' 26.725 W
3,000.0	47.01	71.86	2,437.7	469.9	1,434.5	510,998.81	1,318,013.55	39° 12' 41.871 N	107° 54' 25.842 W
3,100.0	47.01	71.86	2,505.9	492.6	1,504.1	511,019.73	1,318,083.65	39° 12' 42.096 N	107° 54' 24.959 W
3,200.0	47.01	71.86	2,574.1	515.4	1,573.6	511,040.64	1,318,153.75	39° 12' 42.321 N	107° 54' 24.076 W
3,300.0	47.01	71.86	2,642.3	538.2	1,643.1	511,061.56	1,318,223.84	39° 12' 42.546 N	107° 54' 23.192 W
3,400.0	47.01	71.86	2,710.4	560.9	1,712.6	511,082.48	1,318,293.94	39° 12' 42.771 N	107° 54' 22.309 W
3,500.0	47.01	71.86	2,778.6	583.7	1,782.1	511,103.39	1,318,364.04	39° 12' 42.996 N	107° 54' 21.426 W
3,577.1	47.01	71.86	2,831.2	601.3	1,835.7	511,119.52	1,318,418.08	39° 12' 43.169 N	107° 54' 20.745 W
3,600.0	46.44	71.86	2,846.9	606.5	1,851.6	511,124.28	1,318,434.06	39° 12' 43.221 N	107° 54' 20.544 W
3,700.0	43.94	71.86	2,917.4	628.5	1,919.0	511,144.57	1,318,502.04	39° 12' 43.439 N	107° 54' 19.687 W
3,800.0	41.44	71.86	2,990.9	649.6	1,983.4	511,163.95	1,318,567.00	39° 12' 43.647 N	107° 54' 18.868 W
3,900.0	38.94	71.86	3,067.2	669.7	2,044.7	511,182.40	1,318,628.84	39° 12' 43.846 N	107° 54' 18.089 W
4,000.0	36.44	71.86	3,146.4	688.7	2,102.8	511,199.88	1,318,687.42	39° 12' 44.034 N	107° 54' 17.351 W
4,100.0	33.94	71.86	3,228.1	706.7	2,157.6	511,216.36	1,318,742.64	39° 12' 44.211 N	107° 54' 16.655 W
4,200.0	31.44	71.86	3,312.2	723.5	2,208.9	511,231.80	1,318,794.39	39° 12' 44.377 N	107° 54' 16.003 W
4,300.0	28.94	71.86	3,398.7	739.1	2,256.7	511,246.18	1,318,842.58	39° 12' 44.532 N	107° 54' 15.396 W
4,400.0	26.44	71.86	3,487.2	753.6	2,300.9	511,259.46	1,318,887.10	39° 12' 44.675 N	107° 54' 14.835 W
4,500.0	23.94	71.86	3,577.7	766.9	2,341.3	511,271.63	1,318,927.88	39° 12' 44.806 N	107° 54' 14.321 W
4,600.0	21.44	71.86	3,669.9	778.9	2,378.0	511,282.66	1,318,964.85	39° 12' 44.924 N	107° 54' 13.855 W
4,700.0	18.94	71.86	3,763.8	789.6	2,410.8	511,292.53	1,318,997.92	39° 12' 45.031 N	107° 54' 13.439 W
4,800.0	16.44	71.86	3,859.1	799.1	2,439.6	511,301.21	1,319,027.03	39° 12' 45.124 N	107° 54' 13.072 W
4,900.0	13.94	71.86	3,955.6	807.2	2,464.5	511,308.71	1,319,052.14	39° 12' 45.205 N	107° 54' 12.755 W
5,000.0	11.44	71.86	4,053.1	814.1	2,485.4	511,314.99	1,319,073.19	39° 12' 45.272 N	107° 54' 12.490 W
5,100.0	8.94	71.86	4,151.5	819.6	2,502.2	511,320.04	1,319,090.14	39° 12' 45.327 N	107° 54' 12.277 W
5,137.6	8.00	71.86	4,188.7	821.3	2,507.5	511,321.63	1,319,095.45	39° 12' 45.344 N	107° 54' 12.210 W



# OXY

## Planning Report - Geographic

<b>Database:</b>	HOPSPP	<b>Local Co-ordinate Reference:</b>	Well MY WAY RANCH FEDERAL 5-15
<b>Company:</b>	OXY USA MID-CON	<b>TVD Reference:</b>	ORIGINAL KB @ 6887.0ft
<b>Project:</b>	PLATEAU	<b>MD Reference:</b>	ORIGINAL KB @ 6887.0ft
<b>Site:</b>	MY WAY RANCH 8-4 PAD	<b>North Reference:</b>	True
<b>Well:</b>	MY WAY RANCH FEDERAL 5-15	<b>Survey Calculation Method:</b>	Minimum Curvature
<b>Wellbore:</b>	ORIG HOLE		
<b>Design:</b>	PLAN 2		

Planned Survey										
Measured Depth (ft)	Inclination (°)	Azimuth (°)	Vertical Depth (ft)	+N/-S (ft)	+E/-W (ft)	Map Northing (ft)	Map Easting (ft)	Latitude	Longitude	
5,200.0	8.00	71.86	4,250.5	824.0	2,515.7	511,324.11	1,319,103.77	39° 12' 45.370 N	107° 54' 12.105 W	
5,300.0	8.00	71.86	4,349.5	828.3	2,529.0	511,328.09	1,319,117.11	39° 12' 45.413 N	107° 54' 11.937 W	
5,400.0	8.00	71.86	4,448.6	832.7	2,542.2	511,332.07	1,319,130.44	39° 12' 45.456 N	107° 54' 11.769 W	
5,500.0	8.00	71.86	4,547.6	837.0	2,555.4	511,336.05	1,319,143.78	39° 12' 45.499 N	107° 54' 11.601 W	
5,600.0	8.00	71.86	4,646.6	841.3	2,568.6	511,340.03	1,319,157.11	39° 12' 45.542 N	107° 54' 11.433 W	
5,700.0	8.00	71.86	4,745.6	845.6	2,581.9	511,344.01	1,319,170.45	39° 12' 45.584 N	107° 54' 11.265 W	
5,800.0	8.00	71.86	4,844.7	850.0	2,595.1	511,347.99	1,319,183.79	39° 12' 45.627 N	107° 54' 11.097 W	
5,900.0	8.00	71.86	4,943.7	854.3	2,608.3	511,351.97	1,319,197.12	39° 12' 45.670 N	107° 54' 10.929 W	
6,000.0	8.00	71.86	5,042.7	858.6	2,621.5	511,355.95	1,319,210.46	39° 12' 45.713 N	107° 54' 10.761 W	
6,100.0	8.00	71.86	5,141.7	863.0	2,634.8	511,359.92	1,319,223.80	39° 12' 45.756 N	107° 54' 10.592 W	
6,134.6	8.00	71.86	5,176.0	864.5	2,639.3	511,361.30	1,319,228.41	39° 12' 45.770 N	107° 54' 10.534 W	
6,200.0	8.00	71.86	5,240.8	867.3	2,648.0	511,363.90	1,319,237.13	39° 12' 45.798 N	107° 54' 10.424 W	
6,300.0	8.00	71.86	5,339.8	871.6	2,661.2	511,367.88	1,319,250.47	39° 12' 45.841 N	107° 54' 10.256 W	
6,400.0	8.00	71.86	5,438.8	876.0	2,674.5	511,371.86	1,319,263.81	39° 12' 45.884 N	107° 54' 10.088 W	
6,500.0	8.00	71.86	5,537.9	880.3	2,687.7	511,375.84	1,319,277.14	39° 12' 45.927 N	107° 54' 9.920 W	
6,600.0	8.00	71.86	5,636.9	884.6	2,700.9	511,379.82	1,319,290.48	39° 12' 45.970 N	107° 54' 9.752 W	
6,700.0	8.00	71.86	5,735.9	889.0	2,714.1	511,383.80	1,319,303.81	39° 12' 46.012 N	107° 54' 9.584 W	
6,800.0	8.00	71.86	5,834.9	893.3	2,727.4	511,387.78	1,319,317.15	39° 12' 46.055 N	107° 54' 9.416 W	
6,900.0	8.00	71.86	5,934.0	897.6	2,740.6	511,391.76	1,319,330.49	39° 12' 46.098 N	107° 54' 9.248 W	
7,000.0	8.00	71.86	6,033.0	902.0	2,753.8	511,395.74	1,319,343.82	39° 12' 46.141 N	107° 54' 9.080 W	
7,100.0	8.00	71.86	6,132.0	906.3	2,767.0	511,399.72	1,319,357.16	39° 12' 46.184 N	107° 54' 8.912 W	
7,200.0	8.00	71.86	6,231.0	910.6	2,780.3	511,403.70	1,319,370.50	39° 12' 46.226 N	107° 54' 8.744 W	
7,300.0	8.00	71.86	6,330.1	915.0	2,793.5	511,407.68	1,319,383.83	39° 12' 46.269 N	107° 54' 8.576 W	
7,387.8	8.00	71.86	6,417.0	918.8	2,805.1	511,411.17	1,319,395.54	39° 12' 46.307 N	107° 54' 8.428 W	

Design Targets										
Target Name										
- hit/miss target	Dip Angle	Dip Dir.	TVD	+N/-S	+E/-W	Northing	Easting			
- Shape	(°)	(°)	(ft)	(ft)	(ft)	(ft)	(ft)	Latitude	Longitude	
MYR FED 5-15 TARGET	352.00	71.86	5,176.0	864.5	2,639.3	511,361.30	1,319,228.41	39° 12' 45.770 N	107° 54' 10.534 W	
- plan hits target center										
- Circle (radius 50.0)										