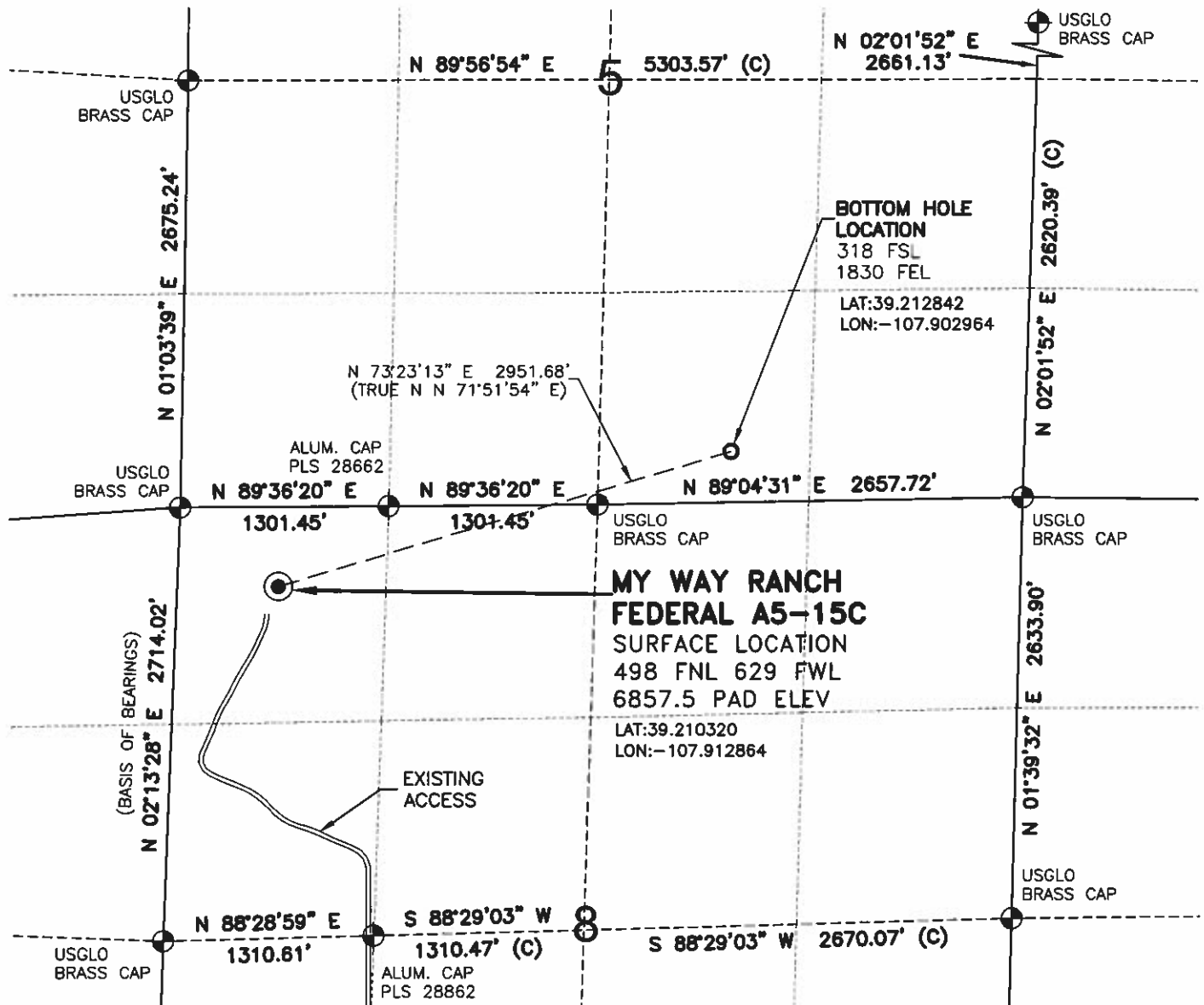


WELL LOCATION MAP

MY WAY RANCH
8-4 PAD



SURVEYOR'S STATEMENT

The undersigned hereby states that the well location shown hereon was taken on the ground based on existing monumentation and/or physical evidence found in the field and is correct to the best of my knowledge, information and belief.



NOTES

- 1.) Horizontal and vertical datum based on Mesa County control point "SN23" with an elevation of 8008.15. NAVD 1988.
- 2.) All directions, distances, and dimensions shown hereon are based on coordinates from the "Colorado coordinate system of 1983 central zone" (article 52 of title 38, C.R.S.).
- 3.) All section line dimensions shown hereon are based on field measurements of existing monuments and/or physical evidence found in the field unless otherwise indicated.
- 4.) Physical features shown hereon are for graphical representation only.
- 5.) See Form 2A for visible improvements within 400' of wellhead.
- 6.) Distances to nearest section lines are measured perpendicularly.
- 7.) This is not a land survey nor land survey plat.
- 8.) Date of Survey 6/24/10; Date of Drawing 8/6/10. REV0
PDOP Reading: 3.4 Instrument Operator: DJM



OXY USA, INC
MY WAY RANCH FEDERAL A5-15C
SL NW1/4 NW1/4 SEC. 8 T10S R94W
BH SW1/4 SE1/4 SEC. 5 T10S R94W
6th PM MESA COUNTY COLORADO