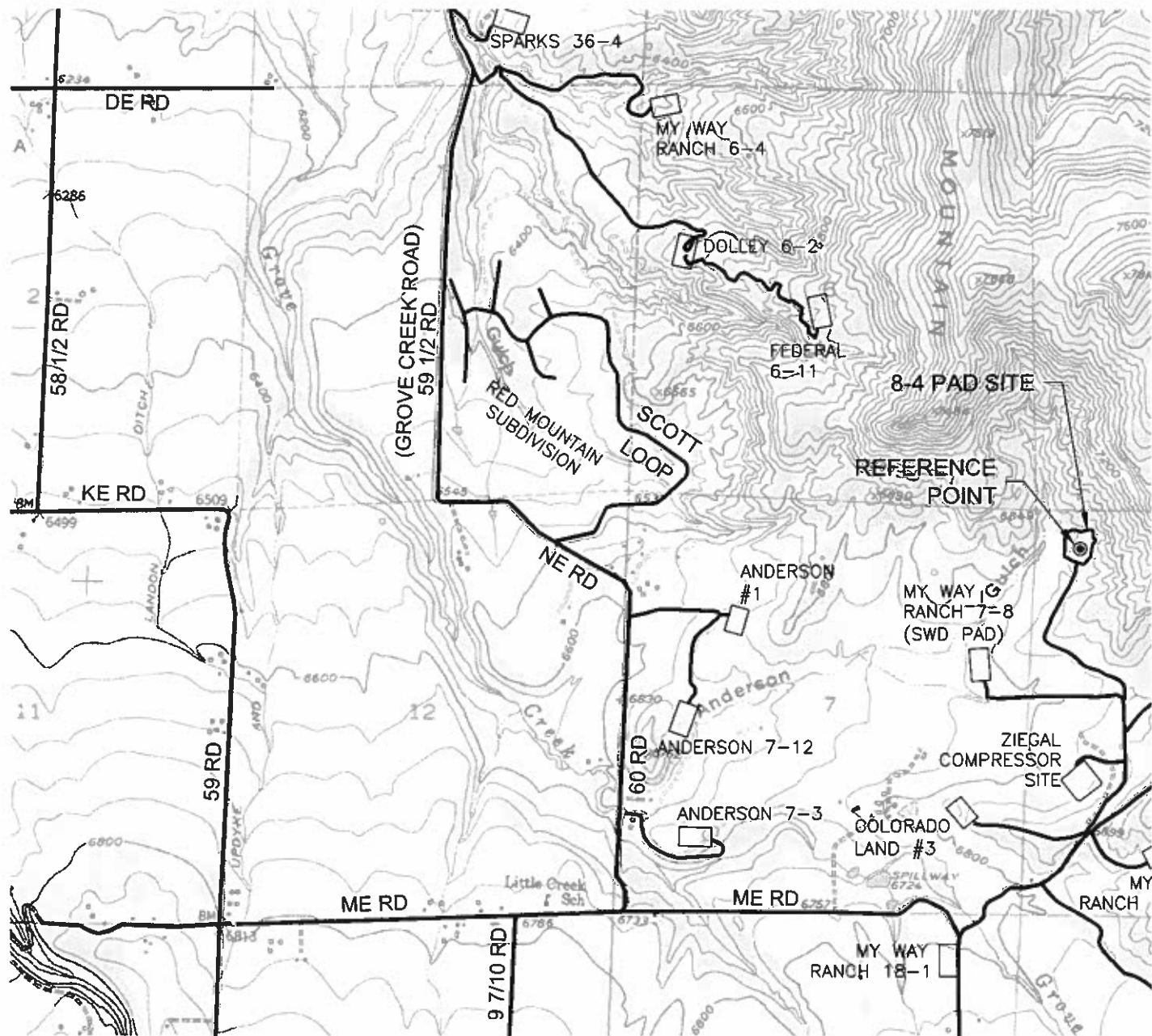


TOPOGRAPHIC MAP

**MY WAY RANCH
8-4 PAD**



DRIVING DIRECTIONS:

From Town of Collbran, beginning at intersection of CR 330 E & CR 58 1/2;
south on CR 58 1/2
MP 0.1 - Intersection with Grove Creek Rd on left; stay right continuing south on CR 58 1/2
MP 1.9 - "T" into KE Rd; Left on KE Rd
MP 2.4 - Road turns right (south) & becomes CR 59; continue south on CR 59
MP 3.4 - Intersection with ME Rd; Left on ME Rd
MP 5.3 - Left on access to MWR 8-4 Pad
MP 6.6 - MWR 8-4 Pad



NORTH

0 2000 4000
Graphic Scale in Feet
1 inch = 2000 feet

GEO SURV
LAND SURVEYING AND MAPPING
520 STACY COURT SUITE "B"
LAFAYETTE, CO. 80026
Ph 303 666 0379 Fx 303 665 6320

**OXY USA, INC
MY WAY RANCH FEDERAL A5-15C**

SL NW1/4 NW1/4 SEC. 8 T10S R94W
BH SW1/4 SE1/4 SEC. 5 T10S R94W
6th PM MESA COUNTY COLORADO