

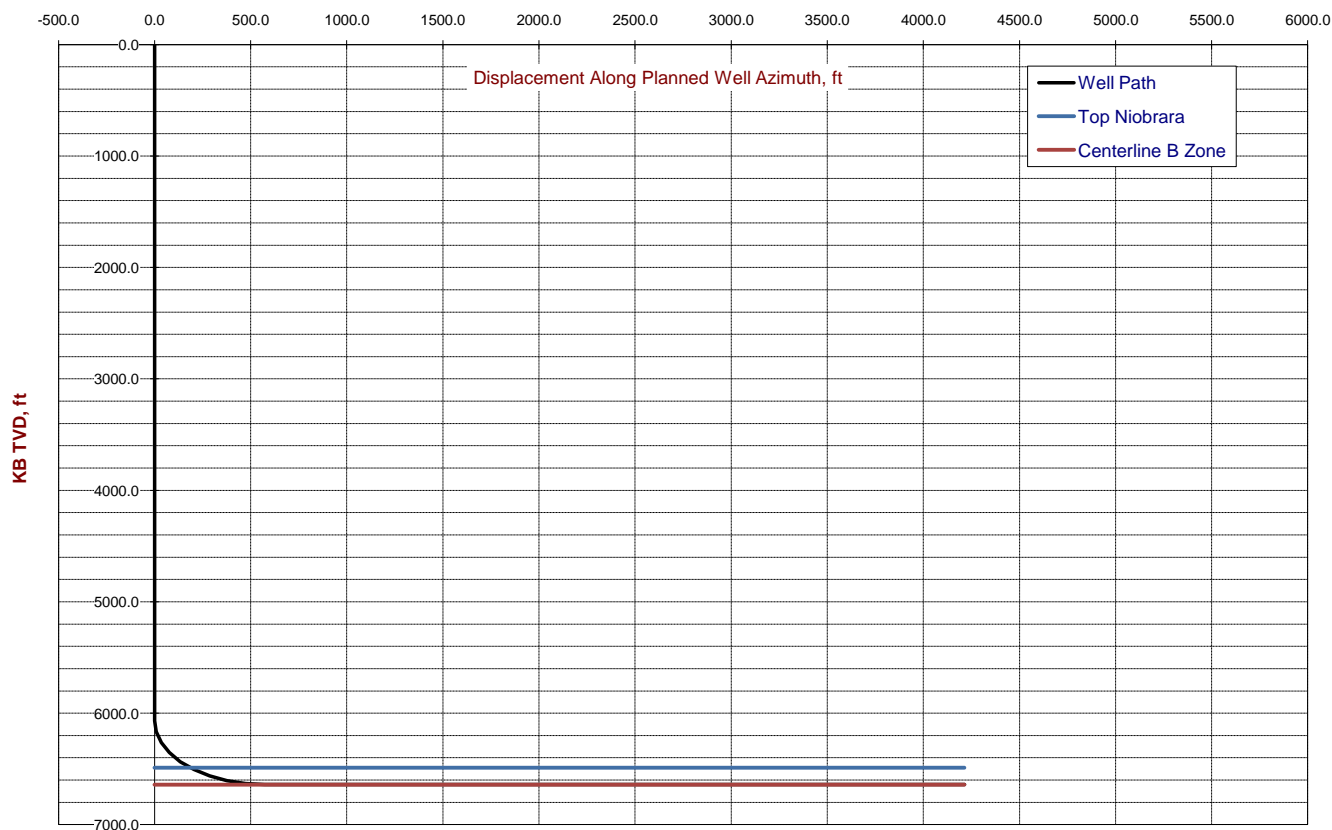


## Directional Well Program

Well Name:	Bob White 36-44-8-62	County	Weld	Engineer:	Fisher			
Date:	Carrizo Oil & Gas, Inc	State	Colorado					
Comments on Well Plan								
Well Information								
Casing Program	MD, ft	TVD	Size In	Well Dev, deg	Well Elevation - GL, ft	4930	Act	
					Rig Elevation to KB, ft	20	Est	
Surface	1400	1400	9 5/8"	0	Total Elevation correction, ft	4950		
Intermediate:	6967	6640	7"	90	Total Drilling Days:	20		
Production	10608	6640	4 1/2"	90				
	X	Y						
Surface Location:	3343855	1468261	Coordinate System - State Plane		NAD 83			
Bottom Hole Location:	3342566	1472273	Zone		Colorado North Zone			
Directional Summary								
Horizontal well targeting Niobrara	Plnd Well Az fr KOP		342.19	Grid	Total Measured Depth, ft		10608	
Prelim Well Plan	Ttl Projd Displ, ft along Az		4214		Total TVD, ft		6640	
Directional Event	MD	TVD	Dev, deg	BR deg/100'	TR deg/100'	Cumm Displ	Azimuth	Cls Az
Surface Location	0	0	0.00	0.00	0.00	0	0.00	5.71
Drill Surface hole, Set 9 5/8" Surf Csg	1400	1400	0.00	0.00	0.00	0	0.00	0.02
Drill to KOP Vertical Start Build	6067	6067	0.00	0.00	0.00	0	0.00	0.01
Build at 10 deg/100'	6167	6166	10.00	10.00	342.19	9	342.19	342.19
Land Well in Target, Set 7" Inter Csg	6967	6640	90.00	10.00	0.00	573	342.19	342.18
Drill out lateral, Run Prod Csg	10608	6640	90.00	0.00	0.00	4214	342.19	342.18
Target Information								
	Name	Well Intersection Point		KB, TVD	SS TVD	N-S	E-W	VS
SL	Surface Location	3343855	1468261	0	0	0	0.0	0
Target 1	Intersect Top Niobrara	3343797	1468441	6490	1540	179.7	-57.7	188.75
Target 2	Land Well In Target Set 7" Inter Csg	3343680	1468807	6640	1690	545.5	-175.3	572.96
Target 3								
BHL	Total Depth	3342566	1472273	6640	-1690	4012.0	-1289.3	4214
Notes								

### Bob White 36-44-8-62 Vertical Section

Planned Azimuth 342.19





CARRIZO OIL & GAS, INC.

## Directional Well Program

Well Name:	Bob White 36-44-8-62	County	Weld	Engineer:	Fisher
Date:	Carrizo Oil & Gas, Inc	State	Colorado		

### Plan View

Bob White 36-44-8-62

Well Azimuth 342.19

