

MULTI-WELL PLAN

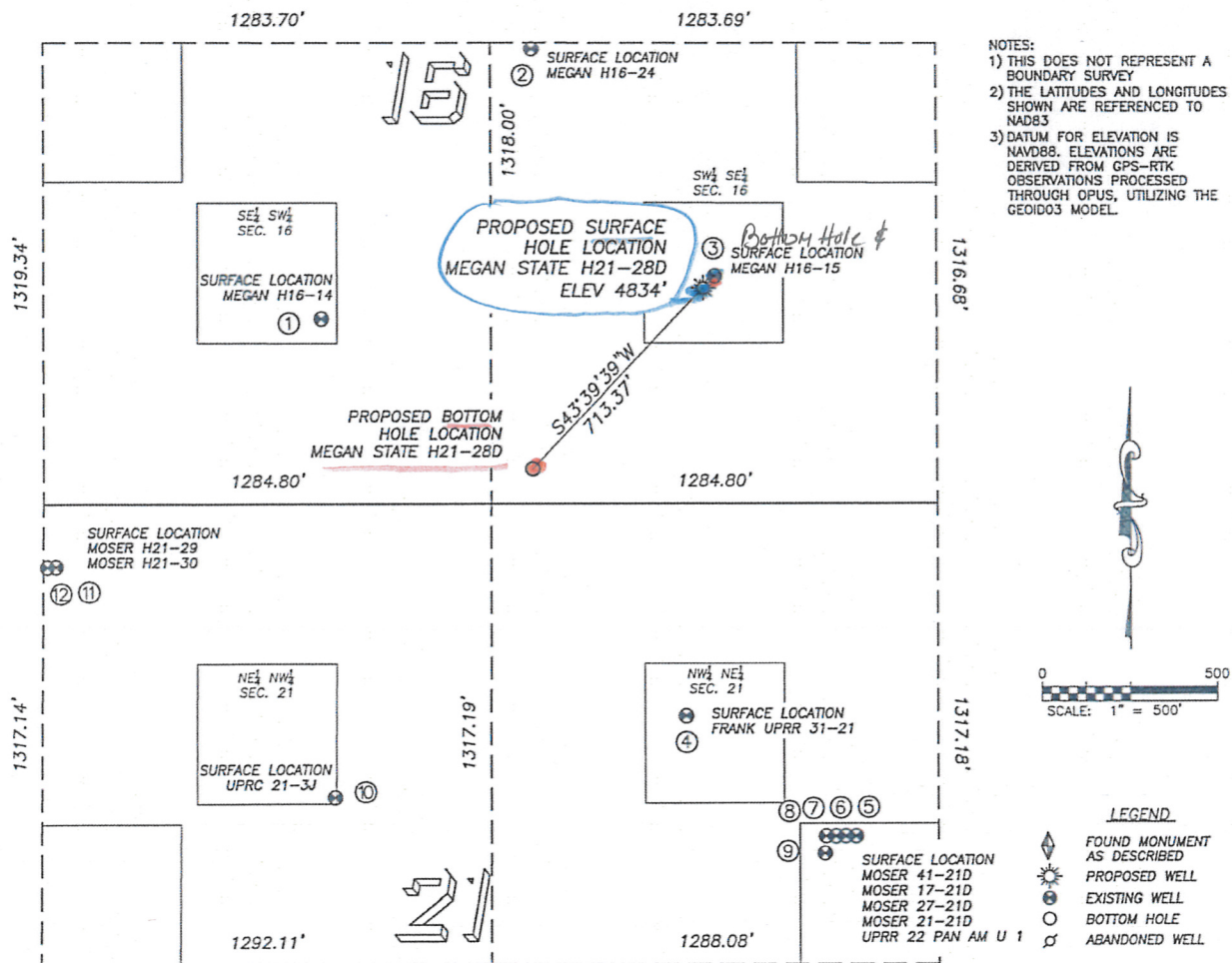
DALEY LAND SURVEYING, INC.

PARKER, CO. 80134

303 953 9841

SITE SKETCH MEGAN STATE H21-28D

SECTION 16, TOWNSHIP 3 NORTH, RANGE 65 WEST OF THE 6TH PRINCIPAL MERIDIAN



<p>① MEGAN H16-14 SE/SW SEC. 16 528' FSL, 2082' FWL 742' NW OF PROPOSED BOTTOM HOLE LOCATION LAT. N40.21962° LONG. W104.67030° EL: 4836' PDOP 1.8</p>	<p>② MEGAN H16-24 SW/SE SEC. 16 1300' FSL, 2450' FEL 1200' N OF PROPOSED BOTTOM HOLE LOCATION LAT. N40.22174° LONG. W104.66814° EL: 4838' PDOP 1.9</p>	<p>③ MEGAN H16-15 SW/SE SEC. 16 650' FSL, 1923' FEL 760' NE OF PROPOSED BOTTOM HOLE LOCATION LAT. N40.21995° LONG. W104.66625° EL: 4833' PDOP 1.8</p>	<p>④ FRANK UPRR 31-21 NW/NE SEC. 21 609' FNL, 2011' FEL 834' SE OF PROPOSED BOTTOM HOLE LOCATION LAT. N40.21650° LONG. W104.66655° EL: 4827' PDOP 3.6</p>	<p>⑤ MOSER 41-21D NW/NE SEC. 21 954' FNL, 1525' FEL 1404' SE OF PROPOSED BOTTOM HOLE LOCATION LAT. N40.21555° LONG. W104.66481° EL: 4828' PDOP 2.0</p>	<p>⑥ MOSER 17-21D NW/NE SEC. 21 954' FNL, 1555' FEL 1385' SE OF PROPOSED BOTTOM HOLE LOCATION LAT. N40.21555° LONG. W104.66491° EL: 4828' PDOP 2.0</p>
<p>⑦ MOSER 27-21D NW/NE SEC. 21 954' FNL, 1583' FEL 1367' SE OF PROPOSED BOTTOM HOLE LOCATION LAT. N40.21555° LONG. W104.66501° EL: 4828' PDOP 1.8</p>	<p>⑧ MOSER 21-21D NW/NE SEC. 21 954' FNL, 1612' FEL 1349' SE OF PROPOSED BOTTOM HOLE LOCATION LAT. N40.21555° LONG. W104.66512° EL: 4828' PDOP 1.4</p>	<p>⑨ UPRR-22 PAN AM U 1 NW/NE SEC. 21 1003' FNL, 1615' FEL 1386' SE OF PROPOSED BOTTOM HOLE LOCATION LAT. N40.21542° LONG. W104.66513° EL: 4828' PDOP 2.0</p>	<p>⑩ UPRC 21-3J NE/NW SEC. 21 841' FNL, 2130' FWL 1100' SW OF PROPOSED BOTTOM HOLE LOCATION LAT. N40.21586° LONG. W104.67017° EL: 4840' PDOP 1.6</p>	<p>⑪ MOSER H21-29 NE/NW SEC. 21 179' FNL, 1316' FWL 1397' SW OF PROPOSED BOTTOM HOLE LOCATION LAT. N40.21768° LONG. W104.67303° EL: 4849' PDOP 1.4</p>	<p>⑫ MOSER H21-30 NE/NW SEC. 21 180' FNL, 1298' FWL 1422' SW OF PROPOSED BOTTOM HOLE LOCATION LAT. N40.21768° LONG. W104.67312° EL: 4849' PDOP 1.4</p>