

BILL BARRETT CORPORATION E-BILL
DO NOT MAIL-1099 18TH ST,STE 2300W
DENVER, Colorado

GGU FEDERAL
GGU FEDERAL 43D-29-691

PROPETRO/PRO PETRO

Post Job Summary **Cement Surface Casing**

Prepared for: JODI SOUTH
Date Prepared: AUG 31,2010
Version: 1

Service Supervisor: ARNOLD, EDWARD

Submitted by:

HALLIBURTON

The Road to Excellence Starts with Safety

Sold To #: 343492	Ship To #: 2802176	Quote #:	Sales Order #: 7580294
Customer: BILL BARRETT CORPORATION E-BILL	Customer Rep: South, Jodi		
Well Name: GGU FEDERAL	Well #: 43D-29-691	API/UWI #: 05-045-19685	
Field: MAMM CREEK	City (SAP): Silt	County/Parish: Garfield	State: Colorado
Lat: N 39.497 deg. OR N 39 deg. 29 min. 48.019 secs.	Long: W 107.576 deg. OR W -108 deg. 25 min. 27.059 secs.		
Contractor: PROPETRO	Rig/Platform Name/Num: PRO PETRO		
Job Purpose: Cement Surface Casing			
Well Type: Development Well	Job Type: Cement Surface Casing		
Sales Person: METLI, MARSHALL	Srv Supervisor: ARNOLD, EDWARD	MBU ID Emp #: 439784	

Job Personnel

HES Emp Name	Exp Hrs	Emp #	HES Emp Name	Exp Hrs	Emp #	HES Emp Name	Exp Hrs	Emp #
ARNOLD, EDWARD John	4.5	439784	DUBON, TODD N	4.5	443351			

Equipment

HES Unit #	Distance-1 way	HES Unit #	Distance-1 way	HES Unit #	Distance-1 way	HES Unit #	Distance-1 way
10783493	120 mile	10822007	120 mile	10951250	120 mile	10973571	120 mile
11542767	120 mile						

Job Hours

Date	On Location Hours	Operating Hours	Date	On Location Hours	Operating Hours	Date	On Location Hours	Operating Hours
8/31/10	4.5	2.5						

TOTAL	Total is the sum of each column separately							
-------	--	--	--	--	--	--	--	--

Job

Job Times

Formation Name	Formation Depth (MD)	Top	Bottom	Form Type	Job depth MD	Job Depth TVD	Water Depth	Perforation Depth (MD)	From	To	Deparated Loc	Date	Time	Time Zone
				BHST	850. ft	850. ft						31 - Aug - 2010	00:00	MST
												31 - Aug - 2010	00:00	MST
												31 - Aug - 2010	02:24	MST
												31 - Aug - 2010	03:24	MST
												31 - Aug - 2010	04:30	MST

Well Data

Description	New / Used	Max pressure psig	Size in	ID in	Weight lbm/ft	Thread	Grade	Top MD ft	Bottom MD ft	Top TVD ft	Bottom TVD ft
OPEN HOLE SECTION				12.375				.	850.		
SURFACE CASING	Unknown		9.625	8.921	36.		J-55	.	828.8		

Sales/Rental/3rd Party (HES)

Description	Qty	Qty uom	Depth	Supplier
PLUG,CMTG,TOP,9 5/8,HWE,8.16 MIN/9.06 MA	1	EA		
R/A DENSOMETER W/CHART RECORDER,/JOB,ZI	1	JOB		
PORT. DATA ACQUIS. W/OPTICEM RT W/HES	1	EA		
ADC (AUTO DENSITY CTRL) SYS, /JOB,ZI	1	JOB		

Tools and Accessories

Type	Size	Qty	Make	Depth	Type	Size	Qty	Make	Depth	Type	Size	Qty	Make
Guide Shoe					Packer					Top Plug	9.625	1	HES
Float Shoe					Bridge Plug					Bottom Plug			
Float Collar					Retainer					SSR plug set			
Insert Float										Plug Container	9.625	1	HES
Stage Tool										Centralizers			

Miscellaneous Materials

Gelling Agt	Conc	Surfactant	Conc	Acid Type	Qty	Conc	%
Treatment Fld	Conc	Inhibitor	Conc	Sand Type	Size	Qty	

Fluid Data

Stage/Plug #: 1

Fluid #	Stage Type	Fluid Name	Qty	Qty uom	Mixing Density lbm/gal	Yield ft ³ /sk	Mix Fluid Gal/sk	Rate bbl/min	Total Mix Fluid Gal/sk
1	Water Spacer		20.00	bbl	.	.0	.0	5	
2	Lead Cement	VERSACEM (TM) SYSTEM (452010)	120.0	sacks	12.3	2.38	13.75	5	13.75
	13.75 Gal	FRESH WATER							
3	Tail Cement	SWIFTCEM (TM) SYSTEM (452990)	120.0	sacks	14.2	1.43	6.88	5	6.72
	6.715 Gal	FRESH WATER							
4	Displacement		60.00	bbl	.	.0	.0	5	
Calculated Values		Pressures		Volumes					
Displacement	60.3	Shut In: Instant		Lost Returns		Cement Slurry	81.3	Pad	
Top Of Cement	SURFACE	5 Min		Cement Returns	20	Actual Displacement	60.3	Treatment	
Frac Gradient		15 Min		Spacers	20	Load and Breakdown		Total Job	161.6
Rates									
Circulating		Mixing	5	Displacement	5	Avg. Job	5		
Cement Left In Pipe	Amount	44.85 ft	Reason	Shoe Joint					
Frac Ring # 1 @	ID	Frac ring # 2 @	ID	Frac Ring # 3 @	ID	Frac Ring # 4 @	ID		
The Information Stated Herein Is Correct				Customer Representative Signature					

The Road to Excellence Starts with Safety

Sold To #: 343492		Ship To #: 2802176		Quote #:		Sales Order #: 7580294	
Customer: BILL BARRETT CORPORATION E-BILL				Customer Rep: South, Jodi			
Well Name: GGU FEDERAL			Well #: 43D-29-691			API/UWI #: 05-045-19685	
Field: MAMM CREEK		City (SAP): Silt		County/Parish: Garfield		State: Colorado	
Legal Description:							
Lat: N 39.497 deg. OR N 39 deg. 29 min. 48.019 secs.				Long: W 107.576 deg. OR W -108 deg. 25 min. 27.059 secs.			
Contractor: PROPETRO			Rig/Platform Name/Num: PRO PETRO				
Job Purpose: Cement Surface Casing						Ticket Amount:	
Well Type: Development Well			Job Type: Cement Surface Casing				
Sales Person: METLI, MARSHALL			Srvc Supervisor: ARNOLD, EDWARD			MBU ID Emp #: 439784	

Activity Description	Date/Time	Cht #	Rate bbl/min	Volume bbl		Pressure psig		Comments
				Stage	Total	Tubing	Casing	
Arrive At Loc	08/31/2010 00:00							Rig still drilling. Crew already on location.
Call Out	08/31/2010 00:00							
Assessment Of Location Safety Meeting	08/31/2010 00:05							Water test: PH 7; Hardness 120; So4 <200; Fe 0; KCl 250; Chlorides 0; Temp 68 deg.
Pre-Rig Up Safety Meeting	08/31/2010 01:45							Including entire cement crew
Rig-Up Equipment	08/31/2010 01:50							1 Elite # 1; 1 660 bulk truck; 1 hard line from pump to well head; 1 lines to upright. 9.625" screw in head #B0679
Rig-Up Completed	08/31/2010 02:10							
Pre-Job Safety Meeting	08/31/2010 02:15							Including everyone on location
Start Job	08/31/2010 02:24							TD 850; TP 828.75; SJ 44.85; OH 12.375"; CASING 9.625" 36# J-55.
Other	08/31/2010 02:25		2	2			.0	Fill lines with fresh water.
Pressure Test	08/31/2010 02:28						2500.0	PSI test good, no leaks.
Pump Spacer 1	08/31/2010 02:30		5	20			55.0	20 BBL fresh water.
Pump Lead Cement	08/31/2010 02:40		5	50.8			120.0	120 SKs Lead cement, 12.3 ppg; 2.38 cf3; 13.75 gal/sk.
Pump Tail Cement	08/31/2010 02:50		5	30.5			138.0	120 SKs Tail cement, 14.2 ppg; 1.43 cf3; 6.88 gal/sk.

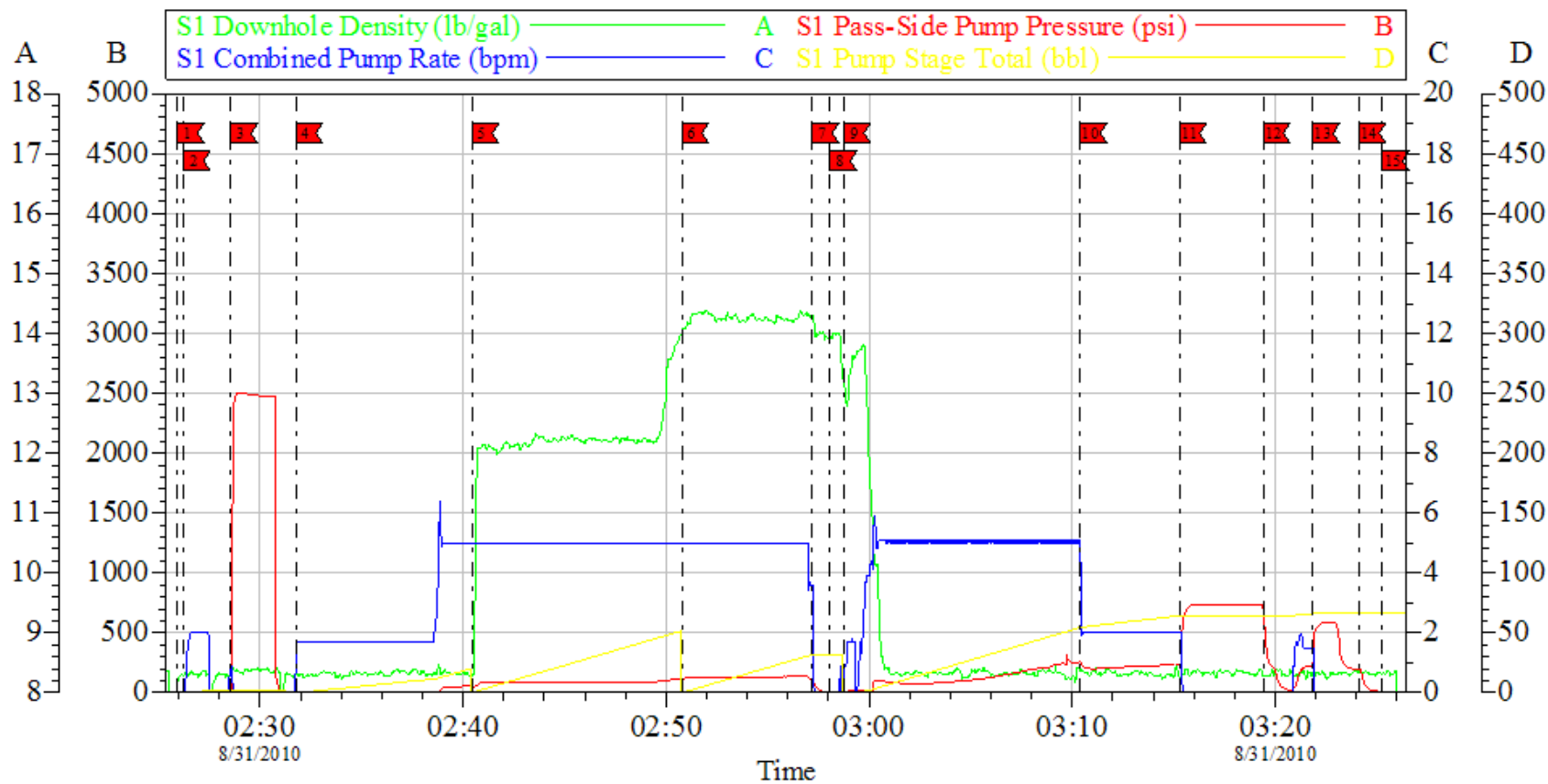
Cementing Job Log

Activity Description	Date/Time	Cht #	Rate bbl/min	Volume bbl		Pressure psig		Comments
				Stage	Total	Tubing	Casing	
Shutdown	08/31/2010 02:57							
Drop Plug	08/31/2010 02:58							Plug left container.
Pump Displacement	08/31/2010 02:59		5	50.3			260.0	Fresh Water Displacement. Got returns at ten BBL's gone. Got Cement to surface at Forty BBL's gone. 20 BBL's of cement to surface.
Slow Rate	08/31/2010 03:10		4	10			238.0	Slow rate last ten BBLs
Bump Plug	08/31/2010 03:16				60.3		742.0	Bumped plug took 500 psi over.
Check Floats	08/31/2010 03:19							Floats held. BBL back.
Bump Plug	08/31/2010 03:21						540.0	Rebump plug.
Shut In Well	08/31/2010 03:24						200.0	Shut in well with 200 PSI on well.
End Job	08/31/2010 03:25							
Pre-Rig Down Safety Meeting	08/31/2010 03:30							Including entire cement crew.
Standby - Other - see comments	08/31/2010 04:00							Wait on location for next job.
Other	08/31/2010 04:01							Thank You for using Halliburton. Ed Arnold and crew.

BILL BARRETT

9.625" SURFACE

GGU FED 43D-29-691



Local Event Log

1 START JOB	02:25:55	2 FILL LINES	02:26:13	3 TEST LINES	02:28:34
4 PUMP H2O SPACER	02:31:46	5 PUMP LEAD CEMENT	02:40:27	6 PUMP TAIL CEMENT	02:50:47
7 SHUT DOWN	02:57:12	8 DROP PLUG	02:58:05	9 PUMP H2O DISPLACEMENT	02:58:45
10 SLOW RATE	03:10:24	11 BUMP PLUG	03:15:17	12 CHECK FLOATS	03:19:25
13 REBUMP PLUG	03:21:52	14 SHUT IN WELL	03:24:08	15 END JOB	03:25:18

Customer: BILL BARRETT
Well Description: GGU FED 43D-29-691
Company Rep: JODI SOUTH

Job Date: 31-Aug-2010
Job Type: 9.625" SURFACE
Cement Supervisor: ED ARNOLD

Sales Order #: 7580294
ADC Used: YES
Elite # 1: TODD DUBON

OptiCem v6.4.8
31-Aug-10 03:36