

---

# **BILL BARRETT CORPORATION E-BILL**

---

**GGU FEDERAL 34D-29-691  
MAMM CREEK  
Garfield County , Colorado**

**Cement Surface Casing**  
**26-Aug-2010**

**Post Job Report**

## The Road to Excellence Starts with Safety

Sold To #: 343492	Ship To #: 2802126	Quote #:	Sales Order #: 7579377
Customer: BILL BARRETT CORPORATION E-BILL	Customer Rep: South, Jodi		
Well Name: GGU FEDERAL	Well #: 34D-29-691	API/UWI #: 05-045-19629	
Field: MAMM CREEK	City (SAP): UNKNOWN	County/Parish: Garfield	State: Colorado
Lat: N 39.497 deg. OR N 39 deg. 29 min. 47.879 secs.	Long: W 107.576 deg. OR W -108 deg. 25 min. 27.232 secs.		
Contractor: BARRETT	Rig/Platform Name/Num: PETRO PLUS		
Job Purpose: Cement Surface Casing			
Well Type: Development Well	Job Type: Cement Surface Casing		
Sales Person: METLI, MARSHALL	Srvc Supervisor: CALDWELL, JEFFREY	MBU ID Emp #: 369111	

## Job Personnel

HES Emp Name	Exp Hrs	Emp #	HES Emp Name	Exp Hrs	Emp #	HES Emp Name	Exp Hrs	Emp #
ARNOLD, EDWARD John	8	439784	CALDWELL, JEFFREY S	8	369111	GAMBLE, BENJAMIN T	8	446666
HAYES, JESSE Doug	8	403601						

## Equipment

HES Unit #	Distance-1 way	HES Unit #	Distance-1 way	HES Unit #	Distance-1 way	HES Unit #	Distance-1 way
10951249	120 mile	11021972	120 mile	11027039	120 mile	11360871	120 mile
11542767	120 mile						

## Job Hours

Date	On Location Hours	Operating Hours	Date	On Location Hours	Operating Hours	Date	On Location Hours	Operating Hours
08-26-10	8	1						

**TOTAL** Total is the sum of each column separately

## Job

Formation Name	Top	Bottom	Called Out	Date	Time	Time Zone
Formation Depth (MD)			On Location	26 - Aug - 2010	12:00	MST
Form Type		BHST	Job Started	26 - Aug - 2010	17:57	MST
Job depth MD	807. ft	Job Depth TVD	Job Completed	26 - Aug - 2010	19:00	MST
Water Depth		Wk Ht Above Floor	Departed Loc	26 - Aug - 2010	20:00	MST
Perforation Depth (MD)	From	To				

## Well Data

Description	New / Used	Max pressure psig	Size in	ID in	Weight lbm/ft	Thread	Grade	Top MD ft	Bottom MD ft	Top TVD ft	Bottom TVD ft
-------------	------------	-------------------	---------	-------	---------------	--------	-------	-----------	--------------	------------	---------------

Sales/Rental/3<sup>rd</sup> Party (HES)

Description	Qty	Qty uom	Depth	Supplier
PLUG,CMTG,TOP,9 5/8,HWE,8.16 MIN/9.06 MA	1	EA		
R/A DENSOMETER W/CHART RECORDER,/JOB,ZI	1	JOB		
PORT. DATA ACQUIS. W/OPTICEM RT W/HES	1	EA		
ADC (AUTO DENSITY CTRL) SYS, /JOB,ZI	1	JOB		

## Tools and Accessories

Type	Size	Qty	Make	Depth	Type	Size	Qty	Make	Depth	Type	Size	Qty	Make
Guide Shoe					Packer					Top Plug	9.625	1	
Float Shoe					Bridge Plug					Bottom Plug			
Float Collar					Retainer					SSR plug set			
Insert Float										Plug Container	9.625	1	
Stage Tool										Centralizers			

## Miscellaneous Materials

Gelling Agt	Conc	Surfactant	Conc	Acid Type	Qty	Conc	%
Treatment Fld	Conc	Inhibitor	Conc	Sand Type	Size	Qty	

Fluid Data									
Stage/Plug #: 1									
Fluid #	Stage Type	Fluid Name	Qty	Qty uom	Mixing Density lbm/gal	Yield ft <sup>3</sup> /sk	Mix Fluid Gal/sk	Rate bbl/min	Total Mix Fluid Gal/sk
1	Water Spacer		20	bbl	.	.0	.0	5.0	
2	Lead Cement	VERSACEM (TM) SYSTEM (452010)	120	sacks	12.3	2.38	13.75	5.0	13.75
		13.75 Gal	FRESH WATER						
3	Tail Cement	SWIFTCES (TM) SYSTEM (452990)	120	sacks	14.2	1.43	6.88	5.0	6.72
		6.715 Gal	FRESH WATER						
4	Displacement		57.5	bbl	.	.0	.0	5.0	
Calculated Values		Pressures		Volumes					
Displacement	57.5	Shut In: Instant		Lost Returns	0	Cement Slurry	81.5	Pad	
Top Of Cement	SURFACE	5 Min		Cement Returns	20	Actual Displacement	57.5	Treatment	
Frac Gradient		15 Min		Spacers	20	Load and Breakdown		Total Job	160
Rates									
Circulating		Mixing	5	Displacement	5	Avg. Job		5	
Cement Left In Pipe	Amount	44.90 ft	Reason	Shoe Joint					
Frac Ring # 1 @	ID	Frac ring # 2 @	ID	Frac Ring # 3 @	ID	Frac Ring # 4 @	ID		
The Information Stated Herein Is Correct				Customer Representative Signature					

*The Road to Excellence Starts with Safety*

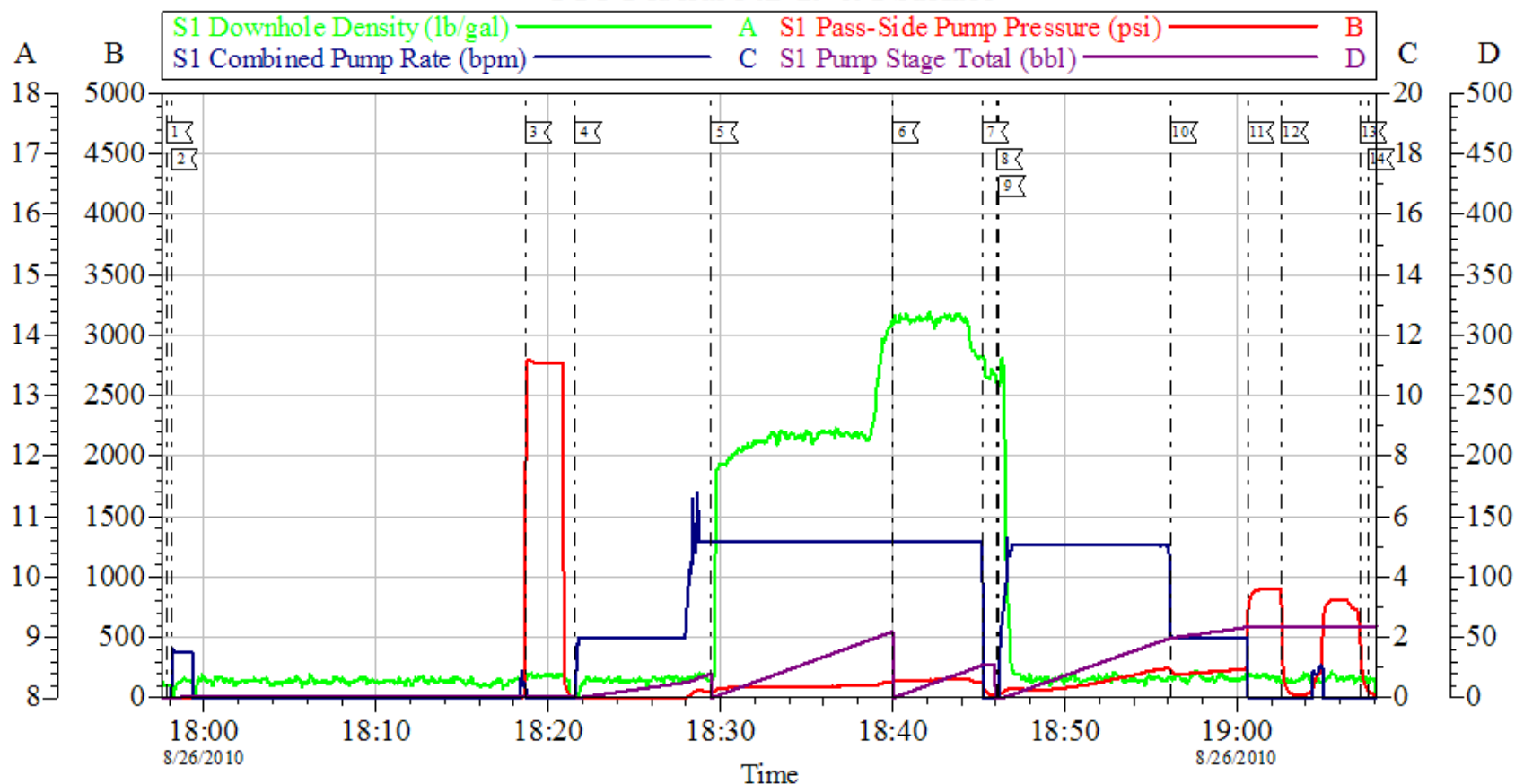
<b>Sold To #:</b> 343492		<b>Ship To #:</b> 2802126		<b>Quote #:</b>		<b>Sales Order #:</b> 7579377	
<b>Customer:</b> BILL BARRETT CORPORATION E-BILL				<b>Customer Rep:</b> South, Jodi			
<b>Well Name:</b> GGU FEDERAL			<b>Well #:</b> 34D-29-691		<b>API/UWI #:</b> 05-045-19629		
<b>Field:</b> MAMM CREEK		<b>City (SAP):</b> UNKNOWN		<b>County/Parish:</b> Garfield		<b>State:</b> Colorado	
<b>Legal Description:</b>							
<b>Lat:</b> N 39.497 deg. OR N 39 deg. 29 min. 47.879 secs.				<b>Long:</b> W 107.576 deg. OR W -108 deg. 25 min. 27.232 secs.			
<b>Contractor:</b> BARRETT			<b>Rig/Platform Name/Num:</b> PETRO PLUS				
<b>Job Purpose:</b> Cement Surface Casing						<b>Ticket Amount:</b>	
<b>Well Type:</b> Development Well			<b>Job Type:</b> Cement Surface Casing				
<b>Sales Person:</b> METLI, MARSHALL			<b>Srvc Supervisor:</b> CALDWELL, JEFFREY				
			<b>MBU ID Emp #:</b> 369111				

Activity Description	Date/Time	Cht #	Rate bbl/min	Volume bbl		Pressure psig		Comments
				Stage	Total	Tubing	Casing	
Call Out	08/26/2010 08:00							ELITE #1
Pre-Convoy Safety Meeting	08/26/2010 09:45							ALL PERSONNEL ASSOCIATED WITH JOB ATTENDED.
Crew Leave Yard	08/26/2010 10:00							ALL PERSONNEL ACCOUNTED FOR.
Arrive At Loc	08/26/2010 12:00							CREW WENT BACK TO YARD AFTER LAST JOB HERE, AND BROUGHT BACK NEXT TWO JOBS.
Safety Meeting	08/26/2010 12:15							ALL PERSONNEL ASSOCIATED WITH JOB ATTENDED.
Rig-Up Equipment	08/26/2010 12:30							
Pre-Job Safety Meeting	08/26/2010 17:30							ALL PERSONNEL ASSOCIATED WITH JOB ATTENDED.
Start Job	08/26/2010 17:57							TD:810', TP:788.25', SJ:44.90', 12 1/4" OH.
Prime Pumps	08/26/2010 17:58		1.5	1.5			5.0	H2O
Test Lines	08/26/2010 18:18					2700.0		TEST GOOD
Pump Spacer	08/26/2010 18:21		5	20			57.0	H2O
Pump Lead Cement	08/26/2010 18:29		5	50.9			112.0	120 SKS 14.2 PPG 1.43 CUFT/SAK 6.85 GAL/SAK
Pump Tail Cement	08/26/2010 18:40			30.56			130.0	120 SKS 12.3 PPG 2.38 CUFT/SAK 13.77 GAL/SAK
Shutdown	08/26/2010 18:45							

Activity Description	Date/Time	Cht #	Rate bbl/ min	Volume bbl		Pressure psig		Comments
				Stage	Total	Tubing	Casing	
Drop Top Plug	08/26/2010 18:46							PLUG AWAY
Pump Displacement	08/26/2010 18:46		5	57.5			200.0	H2O
Slow Rate	08/26/2010 18:56		2	47			207.0	
Bump Plug	08/26/2010 19:00		2	57.5			890.0	PLUG BUMPED
Check Floats	08/26/2010 19:02							FLOATS DID NOT HOLD. AS PER COMPANY REP WE SHUT IN 200 PSI ON WELL.
End Job	08/26/2010 19:07							20.5 BBLS OF CEMENT TO PIT.
Post-Job Safety Meeting (Pre Rig-Down)	08/26/2010 19:10							ALL PERSONNEL ASSOCIATED WITH JOB ATTENDED.
Rig-Down Equipment	08/26/2010 19:15							
Crew Leave Location	08/26/2010 20:00							THANK YOU FOR CHOOSING HALLIBURTON, JEFF CALDWELL AND CREW.

# BILL BARRETT

GGU Federal 34D-29-691 Surface



## Local Event Log

1 Start Job	17:57:50	2 Prime Lines	17:58:08	3 Test Lines	18:18:40
4 Pump H2O Spacer	18:21:33	5 Pump Lead Cement	18:29:29	6 Pump Tail Cement	18:40:01
7 Shut Down	18:45:12	8 Drop Top Plug	18:46:01	9 Pump Displacement	18:46:10
10 Slow Rate	18:56:11	11 Bump Plug	19:00:38	12 Check Floats/Floats Did Not Hold	19:02:37
13 Shut 200 PSI On Well	19:07:09	14 End Job	19:07:36		

Customer: Bill Barrett  
Well Description: GGU Federal 34D-29-691  
Company Rep: Jodi South

Job Date: 26-Aug-2010  
Job Type: Surface  
Cement Supervisor: Jeff Caldwell

Sales Order #: 7579377  
ADC Used: Yes  
Elite #: 1/Tracy Gamble

OptiCem v6.4.2  
26-Aug-10 19:12