

BILL BARRETT CORPORATION E-BILL
DO NOT MAIL-1099 18TH ST,STE 2300W
DENVER, Colorado

GGU FEDERAL
GGU FEDERAL 42A-29-691

Bill Barrett/Pro Petro

Post Job Summary

Cement Surface Casing

Prepared for: Jodi South
Date Prepared: Aug 31, 2010
Version: 1

Service Supervisor: ARNOLD, EDWARD

Submitted by:

HALLIBURTON

The Road to Excellence Starts with Safety

Sold To #: 343492		Ship To #: 2802177		Quote #:		Sales Order #: 7580296	
Customer: BILL BARRETT CORPORATION E-BILL				Customer Rep: South, Jodi			
Well Name: GGU FEDERAL			Well #: 42A-29-691			API/UWI #: 05-045-19620	
Field: MAMM CREEK		City (SAP): Silt		County/Parish: Garfield			State: Colorado
Lat: N 39.497 deg. OR N 39 deg. 29 min. 48.052 secs.				Long: W 107.576 deg. OR W -108 deg. 25 min. 26.861 secs.			
Contractor: Pro Petro			Rig/Platform Name/Num: Pro Petro				
Job Purpose: Cement Surface Casing							
Well Type: Development Well			Job Type: Cement Surface Casing				
Sales Person: METLI, MARSHALL			Srvc Supervisor: ARNOLD, EDWARD			MBU ID Emp #: 439784	

Job Personnel

HES Emp Name	Exp Hrs	Emp #	HES Emp Name	Exp Hrs	Emp #	HES Emp Name	Exp Hrs	Emp #
ARNOLD, EDWARD John	5	439784	DUBON, TODD N	5	443351	KUKUS, CHRISTOPHER A	5	413952
PHILLIPS, MARK Bejar	5	445272						

Equipment

HES Unit #	Distance-1 way	HES Unit #	Distance-1 way	HES Unit #	Distance-1 way	HES Unit #	Distance-1 way
10722398	120 mile	10951250	120 mile	10973571	120 mile	11139330	120 mile
11542767	120 mile						

Job Hours

Date	On Location Hours	Operating Hours	Date	On Location Hours	Operating Hours	Date	On Location Hours	Operating Hours
8/31/10	4	1.5	9/1/10	1	.5			
TOTAL			Total is the sum of each column separately					

Job

Formation Name				Job Times				
Formation Depth (MD)	Top		Bottom	Called Out	Date	Time	Time Zone	
Form Type			BHST	On Location	31 - Aug - 2010	20:00	MST	
Job depth MD	850. ft		Job Depth TVD	850. ft	Job Started	31 - Aug - 2010	22:18	MST
Water Depth			Wk Ht Above Floor	. ft	Job Completed	31 - Aug - 2010	23:10	MST
Perforation Depth (MD)	From		To	Departed Loc	01 - Sep - 2010	01:00	MST	

Well Data

Description	New / Used	Max pressure psig	Size in	ID in	Weight lbm/ft	Thread	Grade	Top MD ft	Bottom MD ft	Top TVD ft	Bottom TVD ft
OPEN HOLE SECTION				12.375				.	850.		
SURFACE CASING	Unknown		9.625	8.921	36.		J-55	.	833.		

Sales/Rental/3rd Party (HES)

Description	Qty	Qty uom	Depth	Supplier
PLUG,CMTG,TOP,9 5/8,HWE,8.16 MIN/9.06 MA	1	EA		
R/A DENSOMETER W/CHART RECORDER,/JOB,ZI	1	JOB		
PORT. DATA ACQUIS. W/OPTICEM RT W/HES	1	EA		
ADC (AUTO DENSITY CTRL) SYS, /JOB,ZI	1	JOB		

Tools and Accessories

Type	Size	Qty	Make	Depth	Type	Size	Qty	Make	Depth	Type	Size	Qty	Make
Guide Shoe					Packer					Top Plug	9.625	1	HES
Float Shoe					Bridge Plug					Bottom Plug			
Float Collar					Retainer					SSR plug set			
Insert Float										Plug Container	9.625	1	HES
Stage Tool										Centralizers			

Miscellaneous Materials

Gelling Agt	Conc	Surfactant	Conc	Acid Type	Qty	Conc	%
-------------	------	------------	------	-----------	-----	------	---

Treatment Fld		Conc		Inhibitor		Conc		Sand Type		Size		Qty	
Fluid Data													
Stage/Plug #: 1													
Fluid #	Stage Type	Fluid Name			Qty	Qty uom	Mixing Density lbm/gal	Yield ft3/sk	Mix Fluid Gal/sk	Rate bbl/min	Total Mix Fluid Gal/sk		
1	Water Spacer				20.00	bbl	.	.0	.0	5			
2	Lead Cement	VERSACEM (TM) SYSTEM (452010)			120.0	sacks	12.3	2.38	13.75	5	13.75		
13.75 Gal		FRESH WATER											
3	Tail Cement	SWIFTCES (TM) SYSTEM (452990)			120.0	sacks	14.2	1.43	6.88	5	6.72		
6.715 Gal		FRESH WATER											
4	Displacement				60.00	bbl	.	.0	.0	5			
Calculated Values				Pressures				Volumes					
Displacement	60.4	Shut In: Instant				Lost Returns				Cement Slurry	81.3	Pad	
Top Of Cement	SURFACE	5 Min				Cement Returns		20	Actual Displacement		60.4	Treatment	
Frac Gradient		15 Min				Spacers		20	Load and Breakdown			Total Job	161.7
Rates													
Circulating		Mixing		5		Displacement		5		Avg. Job		5	
Cement Left In Pipe	Amount	45 ft	Reason		Shoe Joint								
Frac Ring # 1 @	ID		Frac ring # 2 @	ID		Frac Ring # 3 @	ID		Frac Ring # 4 @	ID			
The Information Stated Herein Is Correct					Customer Representative Signature								

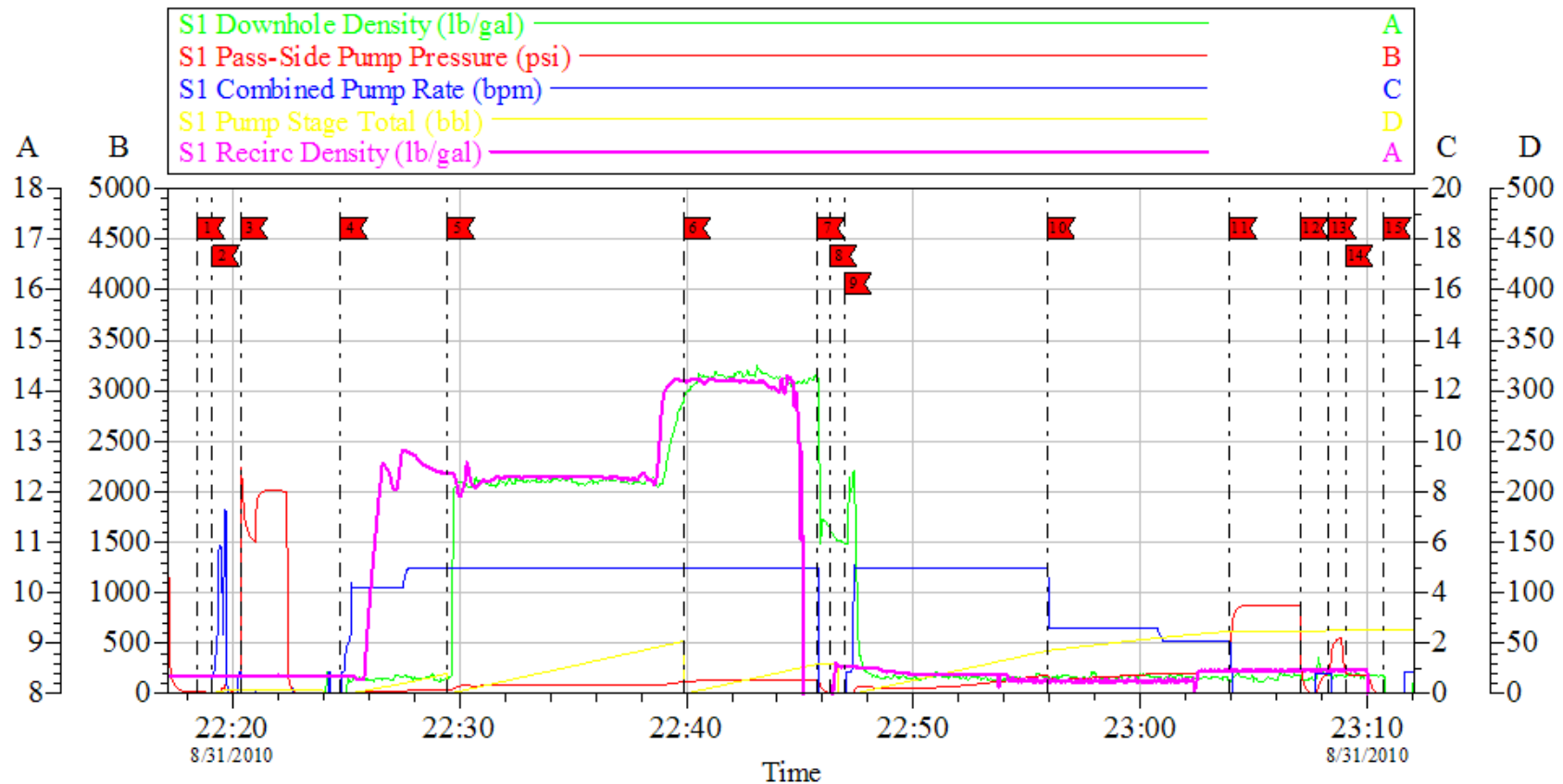
The Road to Excellence Starts with Safety

Sold To #: 343492	Ship To #: 2802177	Quote #:	Sales Order #: 7580296
Customer: BILL BARRETT CORPORATION E-BILL		Customer Rep: South, Jodi	
Well Name: GGU FEDERAL		Well #: 42A-29-691	API/UWI #: 05-045-19620
Field: MAMM CREEK	City (SAP): Silt	County/Parish: Garfield	State: Colorado
Legal Description:			
Lat: N 39.497 deg. OR N 39 deg. 29 min. 48.052 secs.		Long: W 107.576 deg. OR W -108 deg. 25 min. 26.861 secs.	
Contractor: Pro Petro		Rig/Platform Name/Num: Pro Petro	
Job Purpose: Cement Surface Casing			Ticket Amount:
Well Type: Development Well		Job Type: Cement Surface Casing	
Sales Person: METLI, MARSHALL		Srvc Supervisor: ARNOLD, EDWARD	MBU ID Emp #: 439784

Activity Description	Date/Time	Cht #	Rate bbl/min	Volume bbl		Pressure psig		Comments
				Stage	Total	Tubing	Casing	
Arrive At Loc	08/31/2010 20:00							Rig still drilling. Crew already on location.
Call Out	08/31/2010 20:00							
Assessment Of Location Safety Meeting	08/31/2010 20:15							Water test: PH 7; Hardness 120; So4 <200; Fe 0; KCl 250; Chlorides 0; Temp 68 deg.
Pre-Rig Up Safety Meeting	08/31/2010 21:40							Including entire cement crew
Rig-Up Equipment	08/31/2010 21:45							1 Elite # 1; 1 660 bulk truck; 1 hard line from pump to well head; 1 lines to upright. 9.625" screw in head #B0679
Rig-Up Completed	08/31/2010 21:50							
Pre-Job Safety Meeting	08/31/2010 22:15							Including everyone on location
Start Job	08/31/2010 22:18							TD 850; TP 837.95; SJ 45; OH 12.375"; CASING 9.625" 36# J-55.
Other	08/31/2010 22:19		2	2			8.0	Fill lines with fresh water.
Pressure Test	08/31/2010 22:20						2500.0	PSI test good, no leaks.
Pump Spacer 1	08/31/2010 22:24		5	20			25.0	20 BBL fresh water.
Pump Lead Cement	08/31/2010 22:29		5	50.8			119.0	120 SKs Lead cement, 12.3 ppg; 2.38 cf3; 13.75 gal/sk.
Pump Tail Cement	08/31/2010 22:40		5	30.5			150.0	120 SKs Tail cement, 14.2 ppg; 1.43 cf3; 6.88 gal/sk.

Activity Description	Date/Time	Cht #	Rate bbl/min	Volume bbl		Pressure psig		Comments
				Stage	Total	Tubing	Casing	
Shutdown	08/31/2010 22:45							
Drop Plug	08/31/2010 22:46							Plug left container.
Pump Displacement	08/31/2010 22:47		5	40.4			260.0	Fresh Water Displacement. Slowed early to top off other wells.
Slow Rate	08/31/2010 22:55		4	20			245.0	Slow rate last 20 BBLs. 20 BBL's of good cement to surface.
Bump Plug	08/31/2010 23:04				60.4		780.0	Bumped plug took 500 psi over.
Check Floats	08/31/2010 23:07							Floats did not hold.
Bump Plug	08/31/2010 23:08						550.0	Rebump plug.
Shut In Well	08/31/2010 23:09						200.0	Shut in well with 200 PSI on well.
End Job	08/31/2010 23:10							
Pre-Rig Down Safety Meeting	08/31/2010 23:15							Including entire cement crew.
Rig-Down Completed	09/01/2010 00:30							
Crew Leave Location	09/01/2010 01:00							
Other	09/01/2010 01:00							Thank You for using Halliburton. Ed Arnold and crew.

BILL BARRETT
9.625 SURFACE
GGU FED 42A-29-691



Local Event Log					
1	START JOB	22:18:28	5	FILL LINES	22:19:07
4	PUMP H2O SPACER	22:24:45	6	PUMP LEAD CEMENT	22:29:29
7	SHUT DOWN	22:45:47	8	DROP PLUG	22:46:19
10	SLOW RATE	22:55:55	12	BUMP PLUG	23:03:56
13	REBUMP PLUG	23:08:18	15	SHUT IN WELL	23:09:03
			16	TEST LINES	22:20:21
			17	PUMP TAIL CEMENT	22:39:52
			18	PUMP H2O DISPLACEMENT	22:46:57
			19	CHECK FLOATS	23:07:05
			20	END JOB	23:10:43

Customer: BILL BARRETT	Job Date: 31-Aug-2010	Sales Order #: 7580296
Well Description: GGU FED 42A-29-691	Job Type: 9.625 SURFACE	ADC Used: YES
Company Rep: JODI SOUTH	Cement Supervisor: ED ARNOLD	Elite # 1: CHRISKUKUS

OptiCem v6.4.8
31-Aug-10 23:16