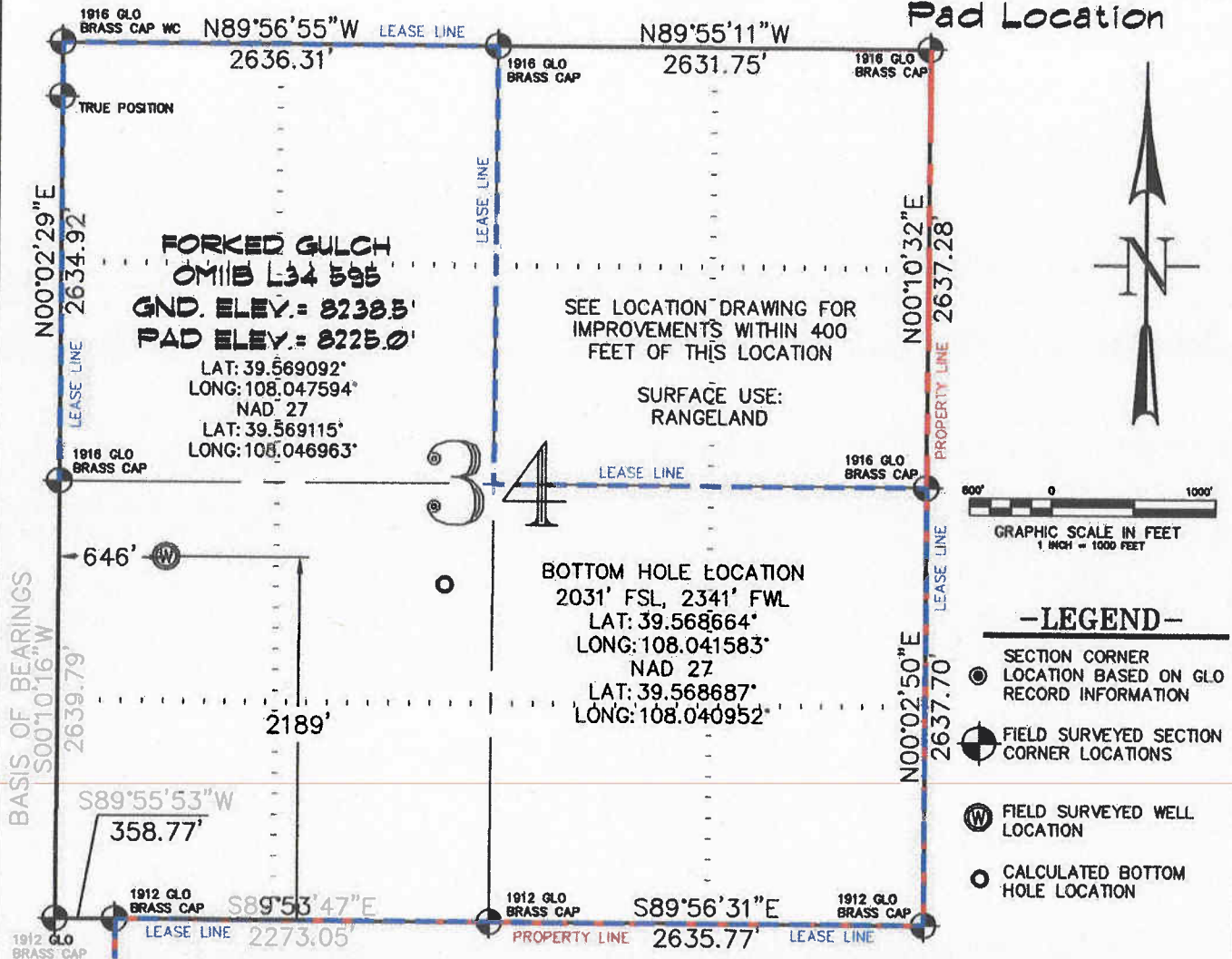


SEC. 34, T. 5 S., R. 95 W. OF THE 6TH P.M. Old Mountain L34-595  
Pad Location



THIS WELL LOCATION PLAT WAS PREPARED FOR BERRY PETROLEUM COMPANY TO LOCATE THE FORKED GULCH OM11B L34 595 WELL, 2189 FEET FROM THE SOUTH LINE AND 646 FEET FROM THE WEST LINE IN THE NW1/4 SW1/4 OF SECTION 34, T. 5 S., R. 95 W. OF THE 6TH P.M. GARFIELD COUNTY, COLORADO.

REFERENCE NOTES

- 1) T. 5 S., R. 95 W., 6TH P.M. GLO PLAT.
- 2) U.S.G.S. QUAD: FORKED GULCH, CO
- 3) ELEVATIONS BASED ON N.A.V.D. 1988
- 4) LATITUDES AND LONGITUDES ARE BASED ON NAD 83, COLORADO CENTRAL ZONE.
- 5) GPS OPERATOR IVAN MARTIN, OBSERVED A PDOP OF 1.9.
- 6) ALL GPS OBSERVATIONS ARE IN COMPLIANCE WITH COGCC RULE NO. 215.
- 7) SURFACE AND BOTTOM HOLE LOCATIONS ARE MEASURED 90° FROM SECTION LINES.

SURVEYOR'S CERTIFICATE

I, George R. Bauer: a Professional Land Surveyor in the State of Colorado do hereby certify that this Survey was made under my direct supervision, and that this Plat represents said Survey.



COLORADO P.L.S. 27925



CONSTRUCTION SURVEYS, INC.  
0012 SUNRISE BLVD.  
SILT, CO 81652  
(970) 876-5753

VIEW: 1D

SURVEYED: 07/07/10	SCALE: 1" = 1000'
DRAFTED: 08/13/10	DWG: Berry/Old Mtn L34-595.dwg
CHECKED: 08/17/10	SHEET: 1 of 11