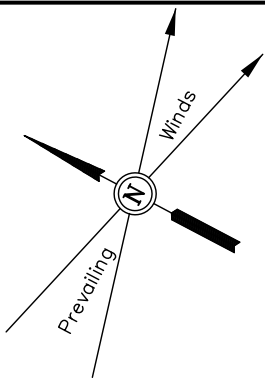


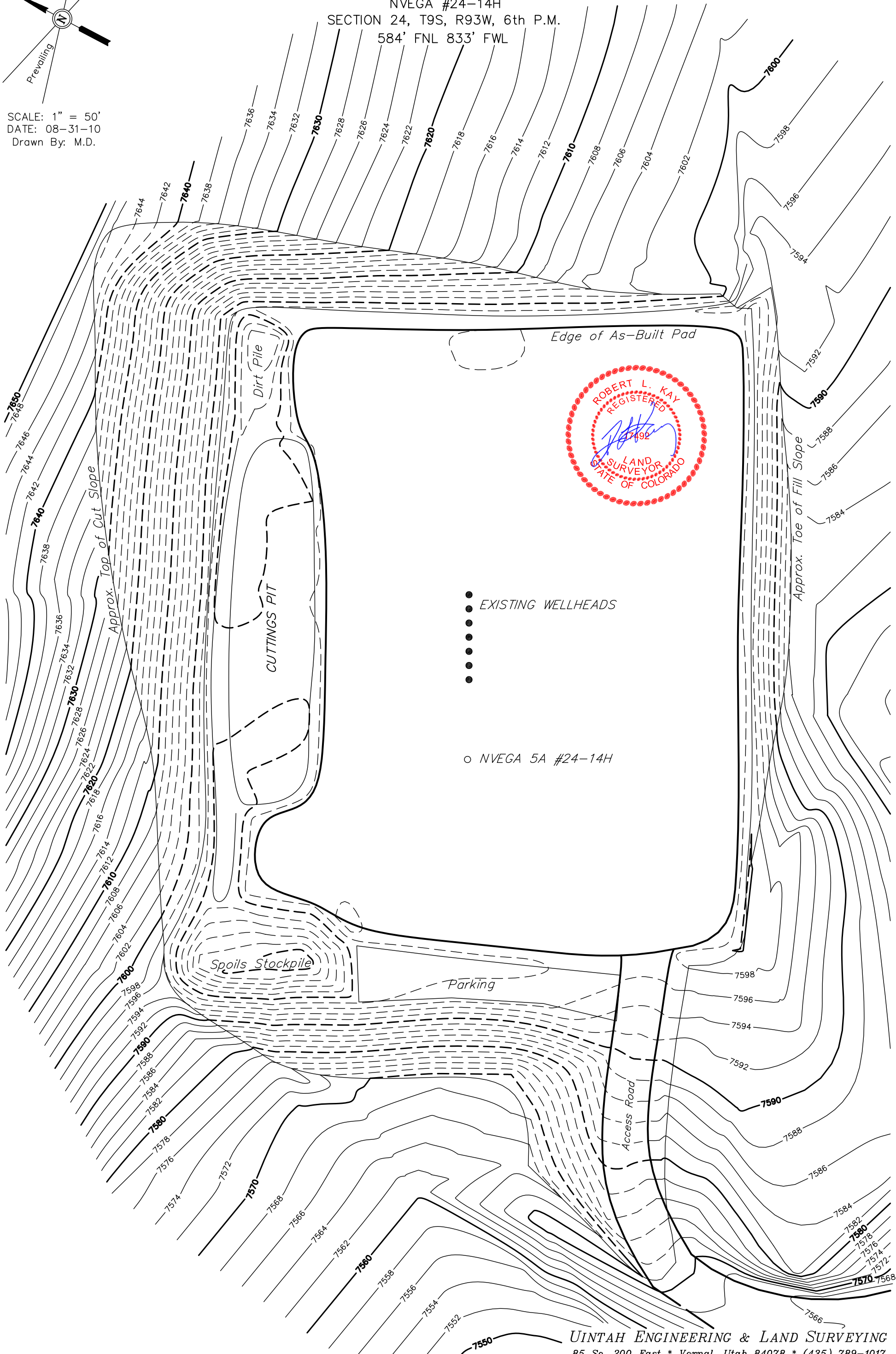
DELTA PETROLEUM CORP.

SITE PLAN FOR

NVEGA #24-14H  
SECTION 24, T9S, R93W, 6th P.M.  
584' FNL 833' FWL

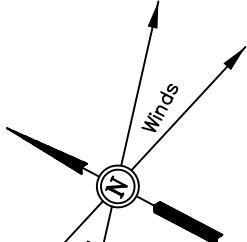


SCALE: 1" = 50'  
DATE: 08-31-10  
Drawn By: M.D.

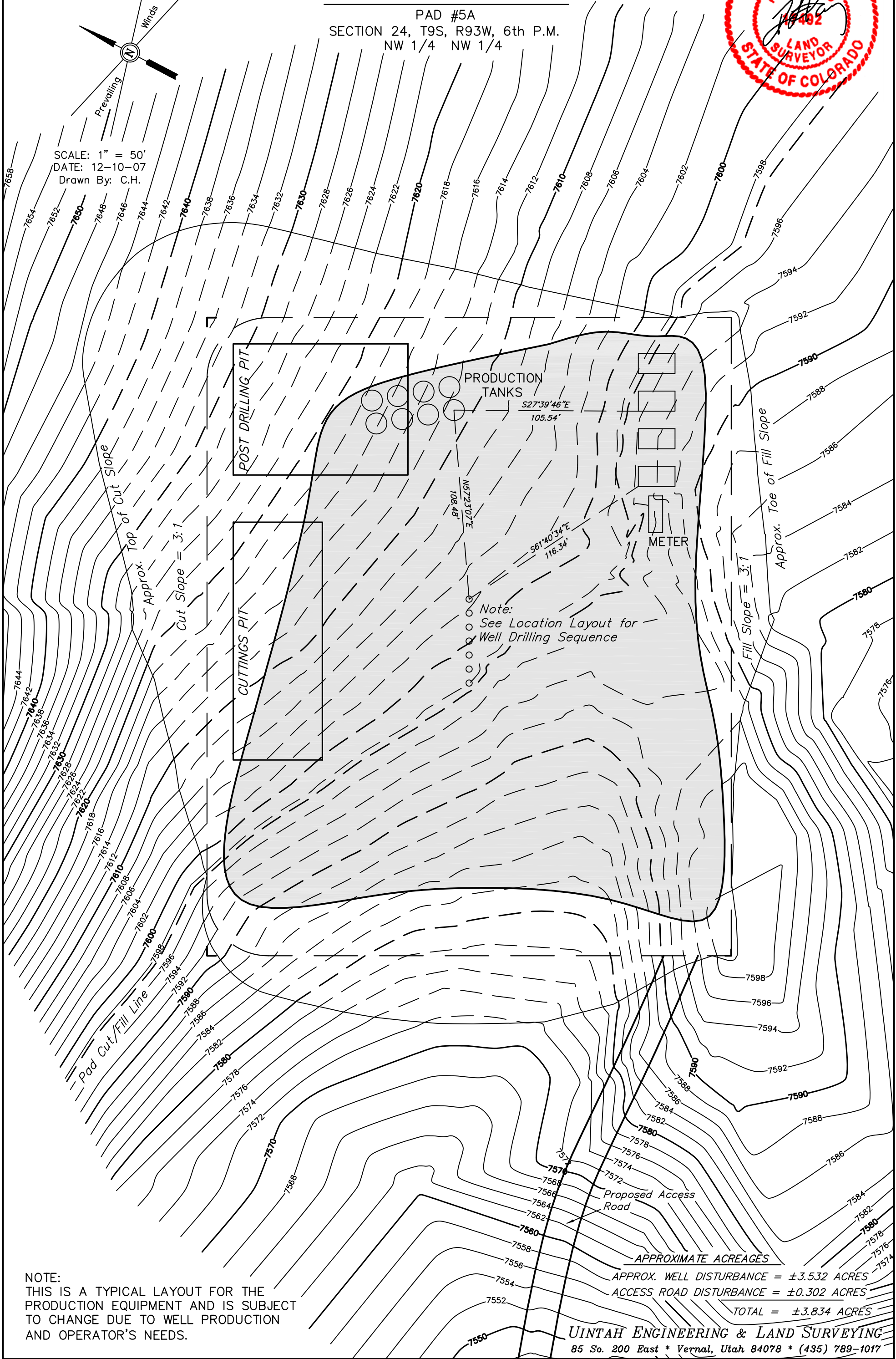


DELTA PETROLEUM CORP.  
RECLAMATION AND PRODUCTION FACILITIES PAD

PAD #5A  
SECTION 24, T9S, R93W, 6th P.M.  
NW 1/4 NW 1/4



SCALE: 1" = 50'  
DATE: 12-10-07  
Drawn By: C.H.



NOTE:  
THIS IS A TYPICAL LAYOUT FOR THE  
PRODUCTION EQUIPMENT AND IS SUBJECT  
TO CHANGE DUE TO WELL PRODUCTION  
AND OPERATOR'S NEEDS.

UINTAH ENGINEERING & LAND SURVEYING  
85 So. 200 East \* Vernal, Utah 84078 \* (435) 789-1017