

Steil Surveying Services, LLC

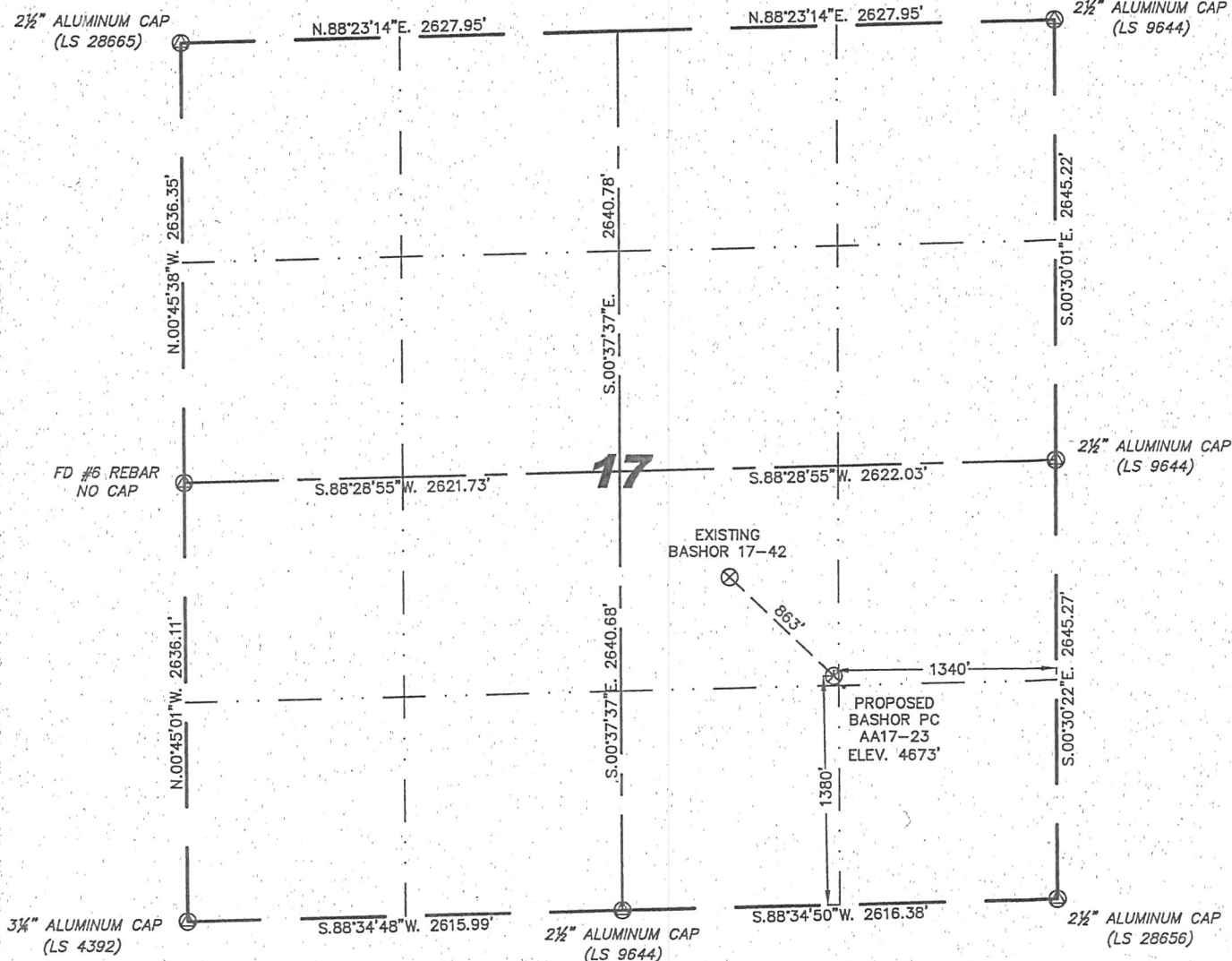
1102 West 19th Street P.O. BOX 2073

Cheyenne, Wyoming 82009

# WELL LOCATION CERTIFICATE

THIS MAP DOES NOT REPRESENT A BOUNDARY SURVEY

SECTION 17  
TOWNSHIP 6 NORTH  
RANGE 63 WEST



0 1000

Scale: 1" = 1000'

IN ACCORDANCE WITH A REQUEST FROM ERIK VAN DECAR - NOBLE ENERGY INC, STEIL SURVEYING SERVICES, LLC HAS DETERMINED THE LOCATION OF THE BASHOR PC AA17-23 WELL TO BE 1380' FSL, 1340' FEL, AS MEASURED AT NINETY (90) DEGREES FROM THE SECTION LINES, SECTION 17, TOWNSHIP 6 NORTH, RANGE 63 WEST, 6TH PRINCIPLE MERIDIAN, WELD COUNTY, COLORADO.

I HEREBY CERTIFY THAT THIS WELL LOCATION CERTIFICATE WAS PREPARED BY ME, OR UNDER MY DIRECT SUPERVISION, THAT THE FIELD WORK WAS COMPLETED ON 06/28/2010, FOR AND ON BEHALF OF NOBLE ENERGY INC, THAT IT IS NOT A LAND SURVEY PLAT OR AN IMPROVEMENT SURVEY PLAT, AND THAT IT IS NOT TO BE RELIED UPON FOR ESTABLISHMENT OF FENCE, BUILDING, OR OTHER FUTURE IMPROVEMENT LINES.

## NOTES:

- 1) BASIS OF BEARINGS FOR THIS MAP ARE BASED UPON GPS OBSERVATIONS MADE ON 06/11/2010 BETWEEN MONUMENTS LOCATED AT THE SOUTHEAST SECTION CORNER AND THE NORTHEAST SECTION CORNER OF SAID SECTION AND WITH ALL BEARINGS SHOWN HEREON RELATIVE THERETO.
- 2) ELEVATIONS ARE BASED UPON NGS OPUS SOLUTION NAVD 88 DATUM.
- 3) THE NEAREST EXISTING WELL IS: BASHOR 17-42, 863' NORTHWEST.
- 4) SEE VISIBLE IMPROVEMENTS EXHIBIT FOR ALL IMPROVEMENTS WITHIN 600'.
- 5) THE LOCATION FALLS IN IRRIGATED CROP LAND.

LATITUDE & LONGITUDE (NAD 83 SURFACE HOLE):

LATITUDE: N 40.48318°

LONGITUDE: W 104.45631°

PDOP: 3.1

QUARTER-QUARTER: NW/4SE/4

NEAREST PROPERTY LINE: 1279' TO THE WEST

## LEGEND

(A) FOUND SURVEY MONUMENT PER MONUMENT RECORD - EXCEPTIONS NOTED.

(C) CALCULATED DIMENSION

NOTICE: According to Colorado law you MUST commence any legal action based upon any defect in this W.L.C. within three years after you first discover such defect. In no event may any action based upon any defect in this W.L.C. be commenced more than ten years from this sold date of the certification shown hereon.



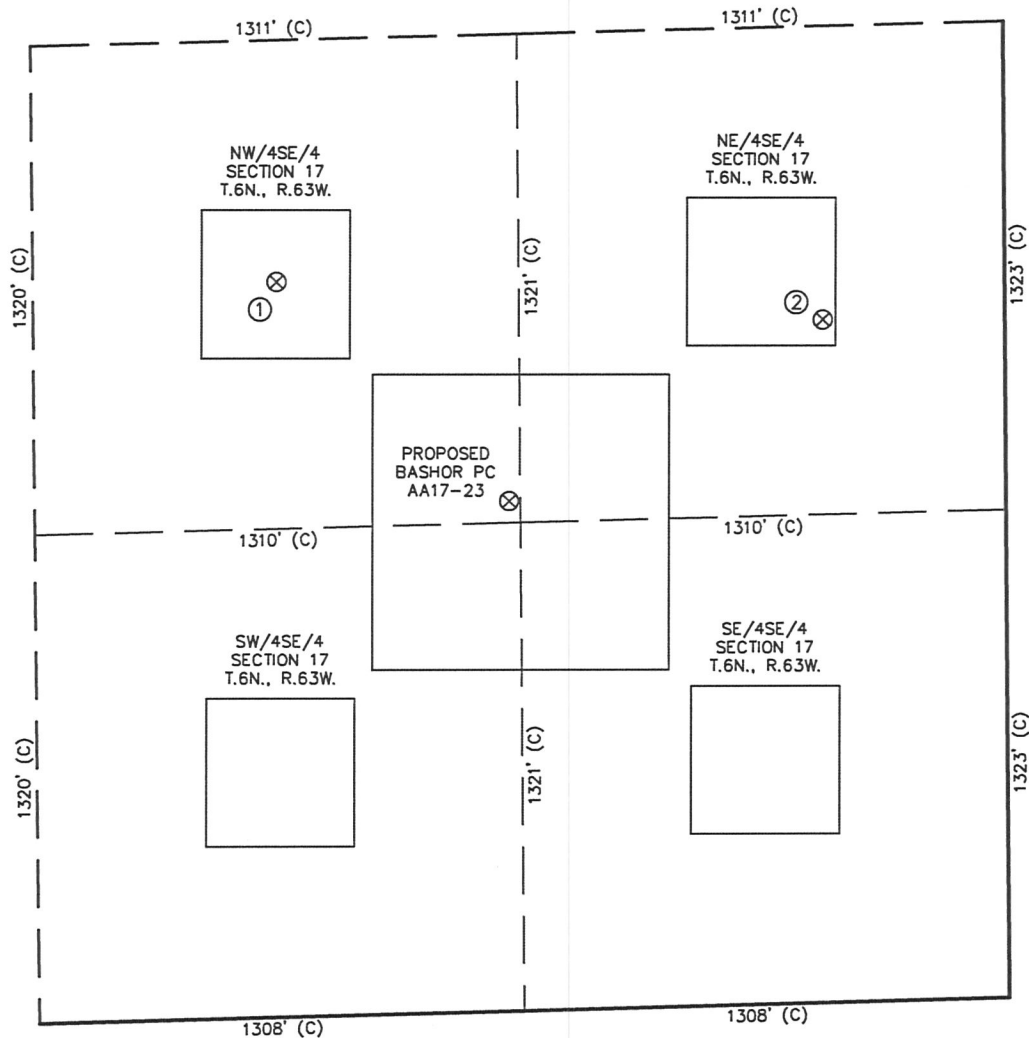
Completed 07/07/2010

David C. Holmes  
Professional Land Surveyor Registration No. 32828  
State of Colorado

JOB #10086

# SKETCH — BASHOR PC AA17-23

SECTION 17  
TOWNSHIP 6 NORTH  
RANGE 63 WEST



①

BASHOR 17-42  
NW/SE SEC. 17  
1987' FSL  
1963' FEL  
EL 4672'  
N 40.48482  
W 104.45855  
PDOP 1.7

②

BASHOR 17-41  
NE/SE SEC. 17  
1849' FSL  
490' FEL  
EL 4673'  
N 40.48449  
W 104.45326  
PDOP 2.2

## NOTES:

- 1) THIS SKETCH DOES NOT REPRESENT A BOUNDARY SURVEY.
- 2) THE DATUM FOR THE LATITUDES AND LONGITUDES ON THIS SKETCH IS NAD83.

