

BASHOR PC AA17-21 TANK

Steil Surveying Services, LLC

1102 West 19th Street P.O. BOX 2073

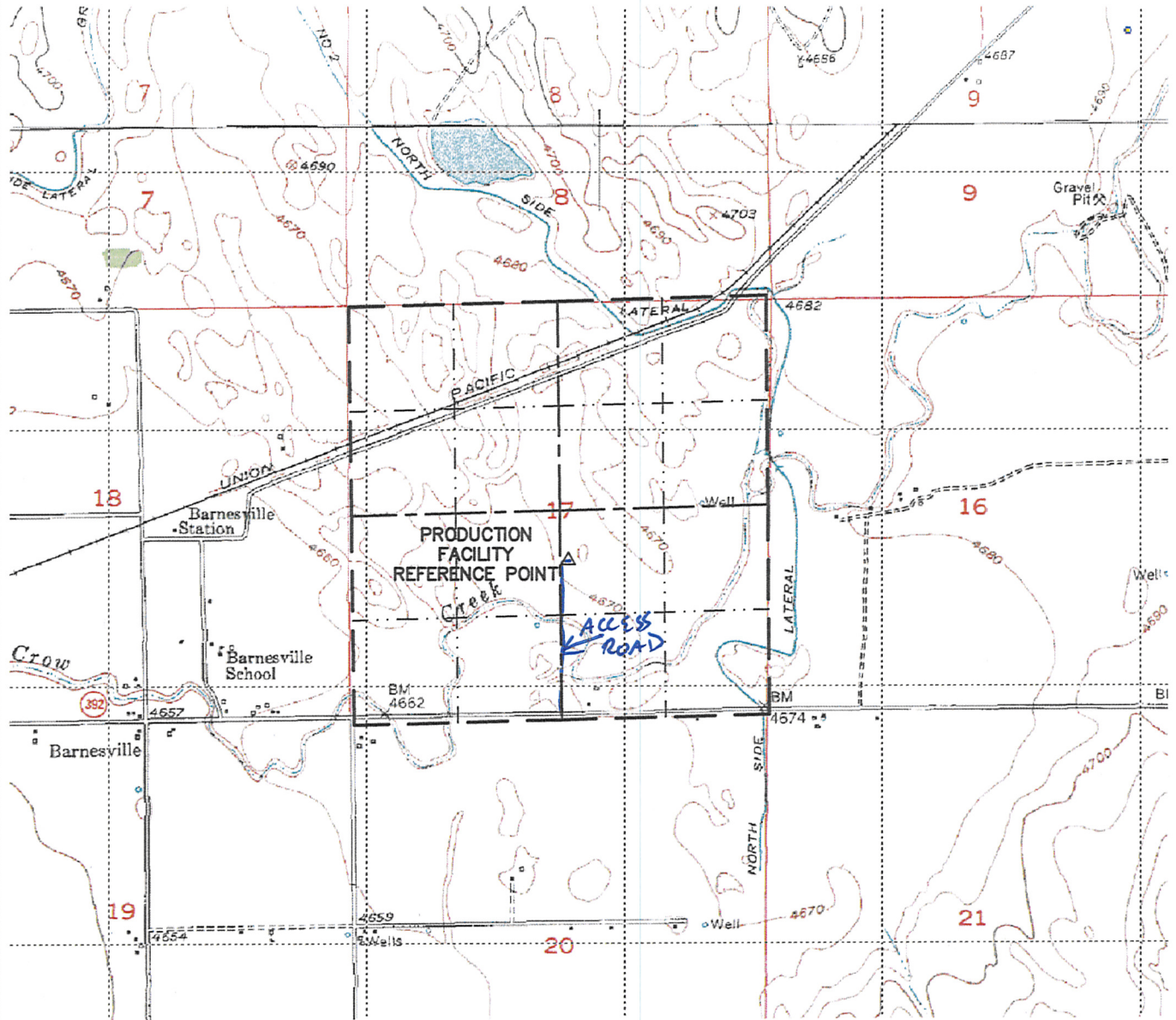
Cheyenne, Wyoming 82009

PRODUCTION FACILITY

ACCESS ROAD MAP

FOR THE PROPOSED BASHOR PC AA17-21, 22,
23, 24, 15 & 16, *Peppler PCAA17-20*

SECTION 17
TOWNSHIP 6 NORTH
RANGE 63 WEST



0 2000

Scale: 1" = 2000'