

1625 Broadway
Suite 2000
Denver, CO 80202

Tel: 303.228.4000
Fax: 303.228.4280
www.nobleenergyinc.com



August 31, 2010

Colorado Oil and Gas Conservation Commission
The Chancery Building
1120 Lincoln Street, Suite 801
Denver, CO 80203

Attn: Mr. David Neslin, Director

RE: FIVE RIVERS USX K09-22D
Codell/Niobrara New Drill
Township 4 North, Range 66 West, 6th P.M.
Section 10: NW/4SW/4: 2011' FSL & 424' FWL (Surface Location)
Section 9: NE/4SE/4: 2600' FSL & 1320' FEL (Bottom Hole Location)
Weld County, Colorado

Mr. Neslin:

Noble Energy, Inc. ("NEI") is planning to drill the captioned boundary well in accordance with the provisions of COGCC Rule 318A.e.

NEI's proposed wellbore spacing unit consists of the S/2NE/4 and the N/2SE/4, T4N, R65W, creating a 160-acre wellbore spacing unit. NEI is the only owner within the proposed wellbore spacing unit, therefore NEI hereby attests that no notice letters are required under COGCC Rule 318A.e.(6).

Enclosed are copies of the following documents to assist you in your review and approval of NEI's proposed APD for the captioned well:

- Plat illustrating the proposed wellbore spacing unit and number of Codell/Niobrara wells located within the existing 160-acre governmental quarter section (SE/4) to be less than eight (8) in accordance with COGCC Rule 318A.f.
- Plat illustrating proposed wellbore spacing unit on existing location plat.

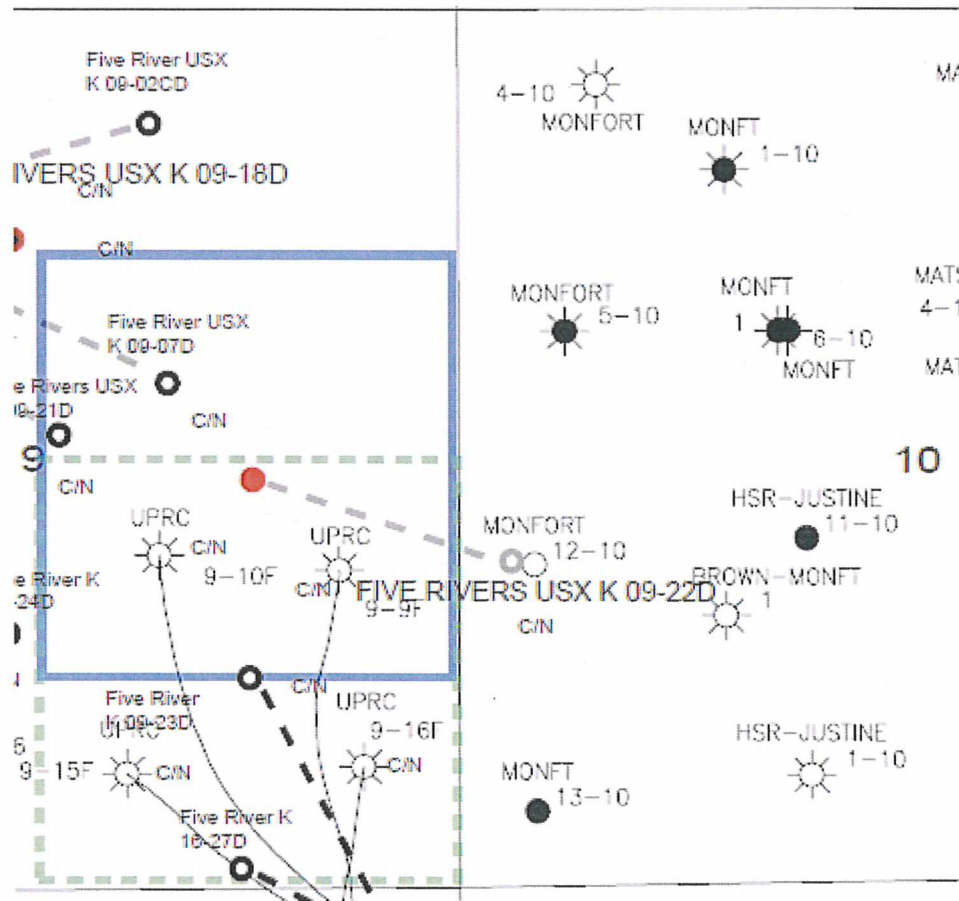
Thank you for your attention to the enclosed. NEI respectfully requests that the COGCC review the enclosed information and approve the Application for Permit to Drill the captioned well.

Sincerely,

A handwritten signature in blue ink that reads 'Mari Clark'.

Mari Clark
Regulatory Analyst II
Noble Energy Inc.

FIVE RIVERS USX K 09-22D **NESE Sec. 9 T4N R66W**



LEGEND



Proposed 160 acre Spacing Unit



Bottom Hole Located NESE Sec. 9, T4N-R66W

The governmental $\frac{1}{4}$ Section has less than 8 bottom hole wells producing from the Codell, Niobrara, & J-Sand Formations.

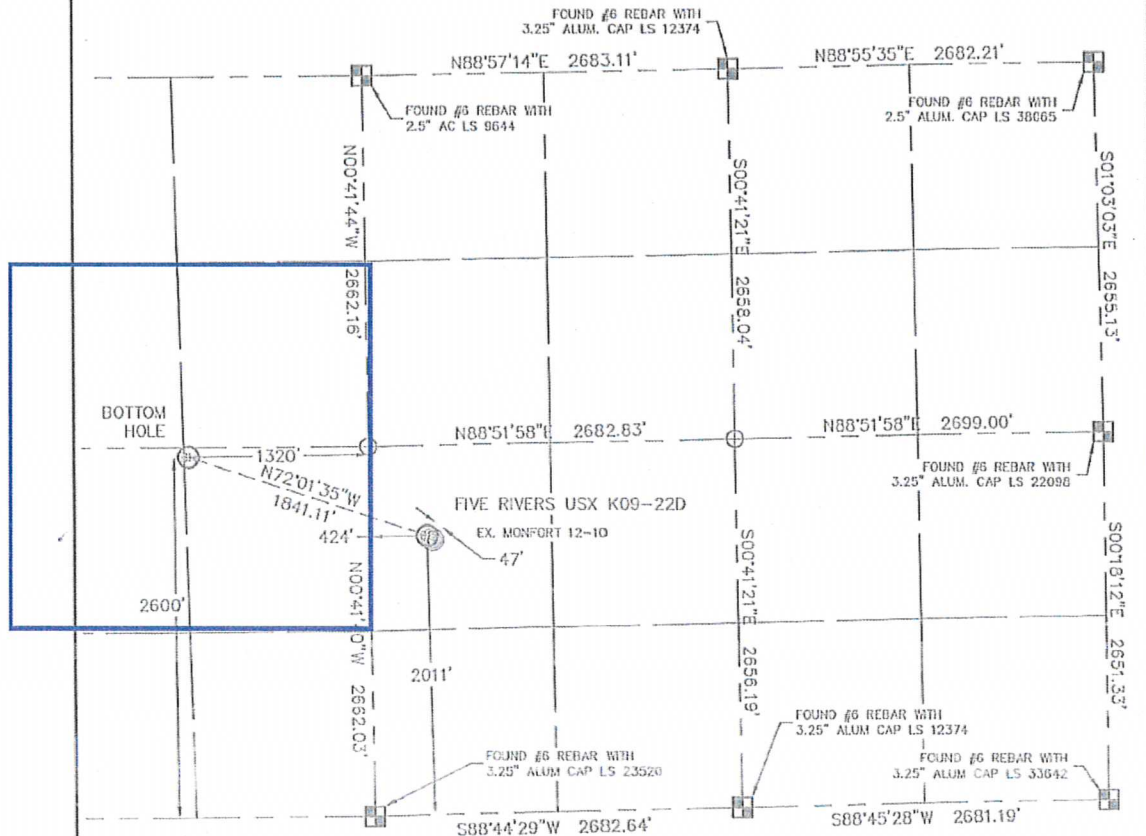
PROPOSED 318Ae SPACING UNIT

KING SURVEYORS, INC. 650 E. GARDEN DR. WINDSOR, CO 80550

WELL LOCATION CERTIFICATE

THIS MAP DOES NOT REPRESENT A BOUNDARY SURVEY

SECTION: 10
TOWNSHIP: 4N
RANGE: 66W



In accordance with a request from JOE MARTIN with Hable Energy Inc., King Surveyors Inc. has determined the surface location of the FIVE RIVERS USX KGR-220 to be 2011' from the South line and 424' from the West line of Section 10, and the bottom hole to be 2600' from the South line and 1370' from the East line as measured at right angles from the section lines of Section 9, Township 3 North, Range 66 West of the Sixth Principal Meridian, County of Weld, State of Colorado.

I hereby state that this Well Location Certificate was prepared by me, or under my direct supervision, that the fieldwork was completed on 3-31-10, for and on behalf of Robie Energy Inc., that this is not a Land Survey Plot or an Improvement Survey Plot, and that it is not to be relied upon for establishment of fence, building, or other future improvement lines.

NOTE:

- 1) Bearings shown are based on bearings of the Colorado State Plane Coordinate System, North Zone, North American Datum 1983/2007. The fixed dimensions as contained herein are based upon the "U.S. Survey Foot."
- 2) Ground elevations are based on an observed GPS elevation (NAD 1983 DATUM).
- 3) NEAREST EXISTING WELL: MONFORT 12-10
- 4) IMPROVEMENTS: See VISIBLE IMPROVEMENTS exhibit for all visible improvements within 600' of well head.
- 5) SURFACE USE: WINTER WHEAT



SURFACE LOCATION BOT
LATITUDE: 40.32446°N LAT
LONGITUDE: 104.77176°W LONG
PDOP: 1.0
ELEV: 4728
1/4,1/4: NW1/4SW1/4
NEAREST PROPERTY LINE: 424' WEST

BOTTOM ROLE
LATITUDE: 40.32606N
LONGITUDE: 104.77502W

NOTE

According to Colorado law, you must commence any legal action based upon any defect in this W.L.C. within three years after you discover such defect. In no event, may any action based upon any defect in this survey be commenced more than ten years after the date of the certificate shown hereon. (13-EO-105 C.R.S.)

LEGEND

-  = ALIQUOT MONUMENT
AS DESCRIBED
-  = CALCULATED POSITION

Michael Chad Dicks : On Behalf Of: King Surveyors, Inc.
Colorado Licensed Professional Land Surveyor #38106
PROJECT#: 2010055

PROJECT#: 2010055