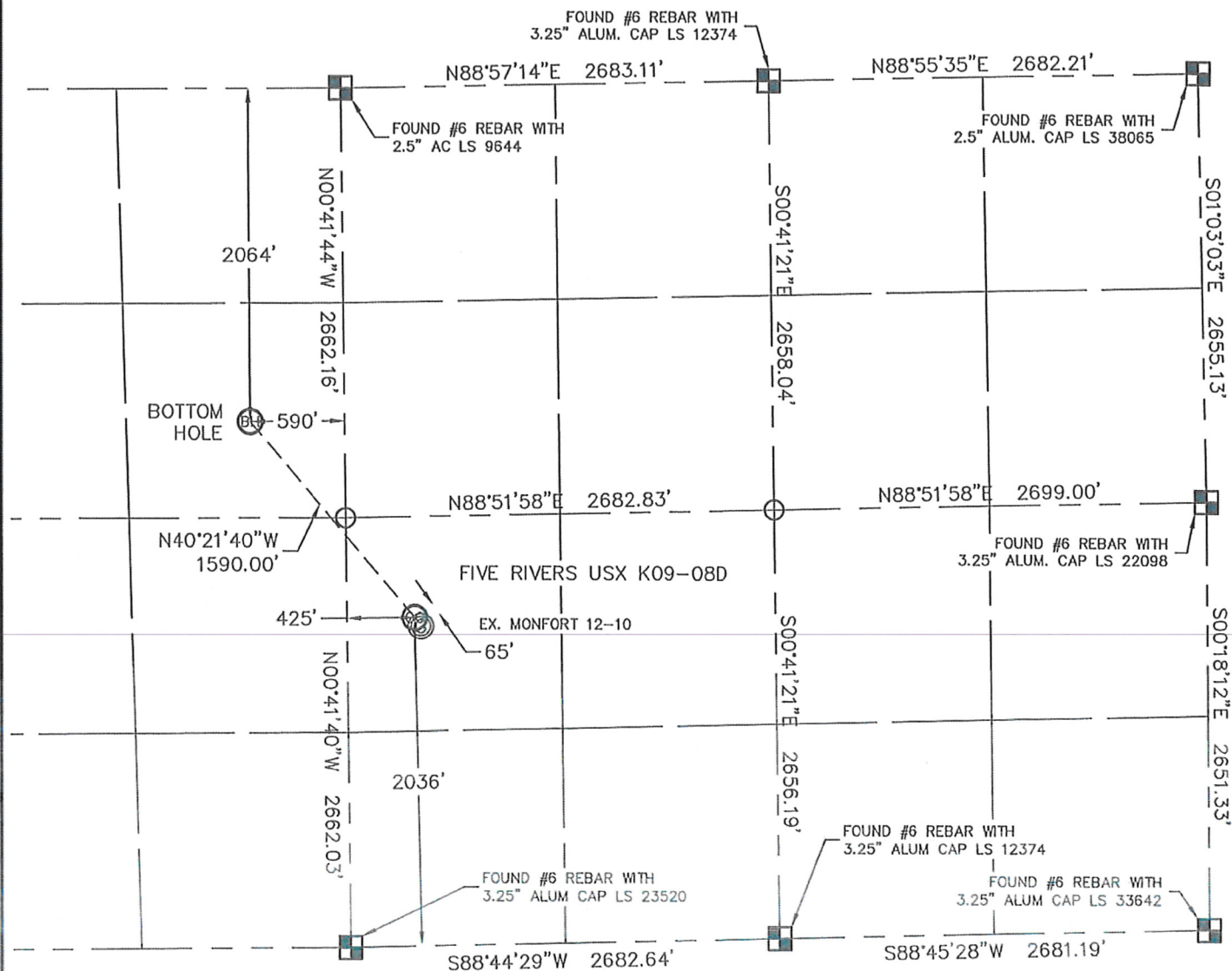


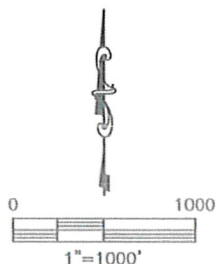
WELL LOCATION CERTIFICATE

THIS MAP DOES NOT REPRESENT A BOUNDARY SURVEY

SECTION: 10
TOWNSHIP: 4N
RANGE: 66W

In accordance with a request from JOE MARTIN with Noble Energy Inc., King Surveyors Inc. has determined the surface location of the FIVE RIVERS USX K09-08D to be 2036' from the South line and 425' from the West line of Section 10, and the bottom hole to be 2064' from the North line and 590' from the East line as measured at right angles from the section lines of Section 9, Township 4 North, Range 66 West of the Sixth Principal Meridian, County of Weld, State of Colorado.

I hereby state that this Well Location Certificate was prepared by me, or under my direct supervision, that the fieldwork was completed on 3-31-10, for and on behalf of Noble Energy Inc.. That this is not a Land Survey Plat or an Improvement Survey Plat, and that it is not to be relied upon for establishment of fence, building, or other future improvement lines.



NOTE:

- 1) Bearings shown are Grid Bearings of the Colorado State Plane Coordinate System, North Zone, North American Datum 1983/2007. The lineal dimensions as contained herein are based upon the "U.S. Survey Foot."
- 2) Ground elevations are based on an observed GPS elevation (NAVD 1988 DATUM).
- 3) NEAREST EXISTING WELL: MONFORT 12-10
- 4) IMPROVEMENTS: See VISIBLE IMPROVEMENTS exhibit for all visible improvements within 600' of well head.
- 5) SURFACE USE: WINTER WHEAT

SURFACE LOCATION

LATITUDE: 40.32453°N
LONGITUDE: 104.77176°W
PDOP: 1.2
ELEV: 4726
1/4, 1/4: NW1/4SW1/4
NEAREST PROPERTY LINE: 425' WEST

BOTTOM HOLE

LATITUDE: 40.32787°N
LONGITUDE: 104.77542°W

NOTE

According to Colorado law, you must commence any legal action based upon any defect in this W.L.C. within three years after you discover such defect. In no event, may any action based upon any defect in this survey be commenced more than ten years after the date of the certificate shown hereon. (13-80-105 C.R.S.)

LEGEND

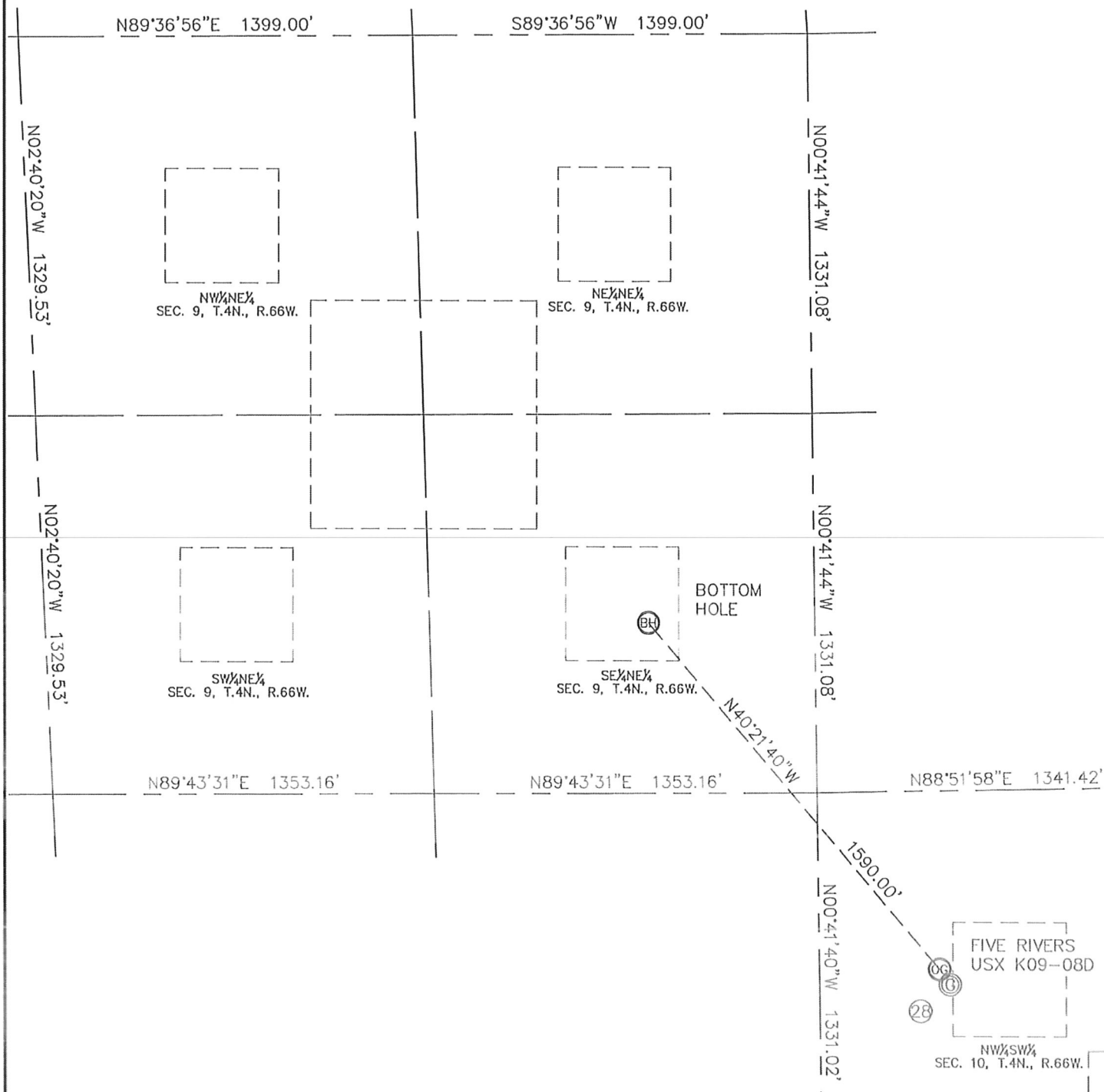
- = ALIQUOT MONUMENT AS DESCRIBED
 = CALCULATED POSITION

Michael Chad Dillk On Behalf Of King Surveyors, Inc.
Colorado Licensed Professional Land Surveyor #38106
4/13/2010
PROJECT#: 2010055

KING SURVEYORS, INC. 650 E. GARDEN DR. WINDSOR, CO 80550

SITE SKETCH

SECTION: 10
TOWNSHIP: 4N
RANGE: 66W



28
MONFORT 12-10
NW1/4SW1/4
1981' FSL
462' FWL
LAT-40.32438°N
LONG-104.77163°W
PDOP: 1.7
ELEV: 4726'

