

**PROPOSED BMP'S
XTO ENERGY, INC.**

**Certificate to Discharge Under CDPS General Permit No. COR-03000
Stormwater Discharges Associated with Construction Certification No.
COR03C483**

- A Field Wide Stormwater Management Plan (SWMP) for the La Plata Infill Program is on file at the XTO Energy Inc. office. A Site Specific SWMP with a Site Plan will be developed for each location.
- Inspections of the project site and maintenance of BMP's installed shall be conducted in accordance with the CDPHE CDPS permit & field wide plan.
- Spill Prevention and Counter Measures (SPCC) for the La Plata Infill Program is on file at the XTO Energy Inc. office. The Field SWMP and Site Specific SWMP each address SPCC during construction operations.
- See attached diagram for site specific BMP's.

TABLE 3
STRUCTURAL AND NON-STRUCTURAL BMP CLASSIFICATION

**LA PLATA INFILL PROGRAM
XTO ENERGY, INC.**

NON-STRUCTURAL BMPs		
Program Oversight	Construction Site Planning and Management	Good Housekeeping/Materials Management
Construction Phase Plan Review Contractor Training and Certification Database Development and Maintenance	Timing of projects Construction Sequencing Site Operator BMP Inspection and Maintenance Training Preserving Natural Vegetation/Buffer Minimize Final Pad Site Acreage	General Construction Site Waste Management Spill Prevention, Control Plan and Countermeasures

STRUCTURAL BMPs		
Erosion Control	Sediment Control	Runoff Control
Dust Control Erosion Control Blanket Gravel Surfacing Mulching Retaining Wall Revegetation Riprap Slope Stabilization Surface Roughening/Ripping Terracing Vegetated Buffer	Brush Matting Filter Berm Land Grading Level Spreader Silt Fence Stabilized Construction Entrance Straw Bale Barrier Vegetated Buffer Wattle Wind Fence	Berm Check Dam Culverts Culvert Protection Diversion Ditch/Ditch&Berm Drainage Dip Roadside Ditch Slope Drain Turnout Water Bar



TABLE 2
BMP SELECTION GUIDELINES

LA PLATA INFILL PROGRAM
XTO ENERGY, INC.

ACTIVE	COMPLETED	FINAL STABILIZATION
Compressor Station, Pipelines		
Berm Brush Matting Check Dams Culverts Culvert Protection Diversion Ditch/Ditch&Berm Drainage Dip Erosion Control Blanket Filter Berm Gravel Surfacing Land Grading Level Spreader Retaining Wall Revegetation Riprap Roadside Ditches Silt Fence Slope Drain Stabilized Construction Entrance Straw Bale Barrier Surface Roughening / Ripping Terracing Turnouts Vegetated Buffer Water Bar Wattles Wind Fence	Berm Brush Matting Check Dams Culverts Culvert Protection Diversion Ditch/Ditch&Berm Drainage Dip Erosion Control Blanket Filter Berm Gravel Surfacing Level Spreader Retaining Wall Riprap Roadside Ditches Silt Fence Slope Drain Straw Bale Barrier Terracing Vegetated Buffer Water Bar Wattles Wind Fence	Berm Check Dams Culverts Culvert Protection Diversion Ditch/Ditch&Berm Drainage Dip Filter Berm Gravel Surfacing Retaining Wall Revegetation Riprap Roadside Ditches Slope Drain Terracing Water Bar
Access Roads		
Berm Brush Matting Check Dams Culverts Culvert Protection Diversion Ditch/Ditch&Berm Drainage Dip Erosion Control Blanket Filter Berm Gravel Surfacing Land Grading Level Spreader Retaining Wall Revegetation Riprap Roadside Ditches Silt Fence	Berm Brush Matting Check Dams Culverts Culvert Protection Diversion Ditch/Ditch&Berm Drainage Dip Erosion Control Blanket Filter Berm Gravel Surfacing Level Spreader Retaining Wall Riprap Roadside Ditches Silt Fence Slope Drain Straw Bale Barrier	Berm Check Dams Culverts Culvert Protection Diversion Ditch/Ditch&Berm Drainage Dip Filter Berm Gravel Surfacing Retaining Wall Revegetation Riprap Roadside Ditches Slope Drain Water Bar



TABLE 2
BMP SELECTION GUIDELINES

LA PLATA INFILL PROGRAM
XTO ENERGY, INC.

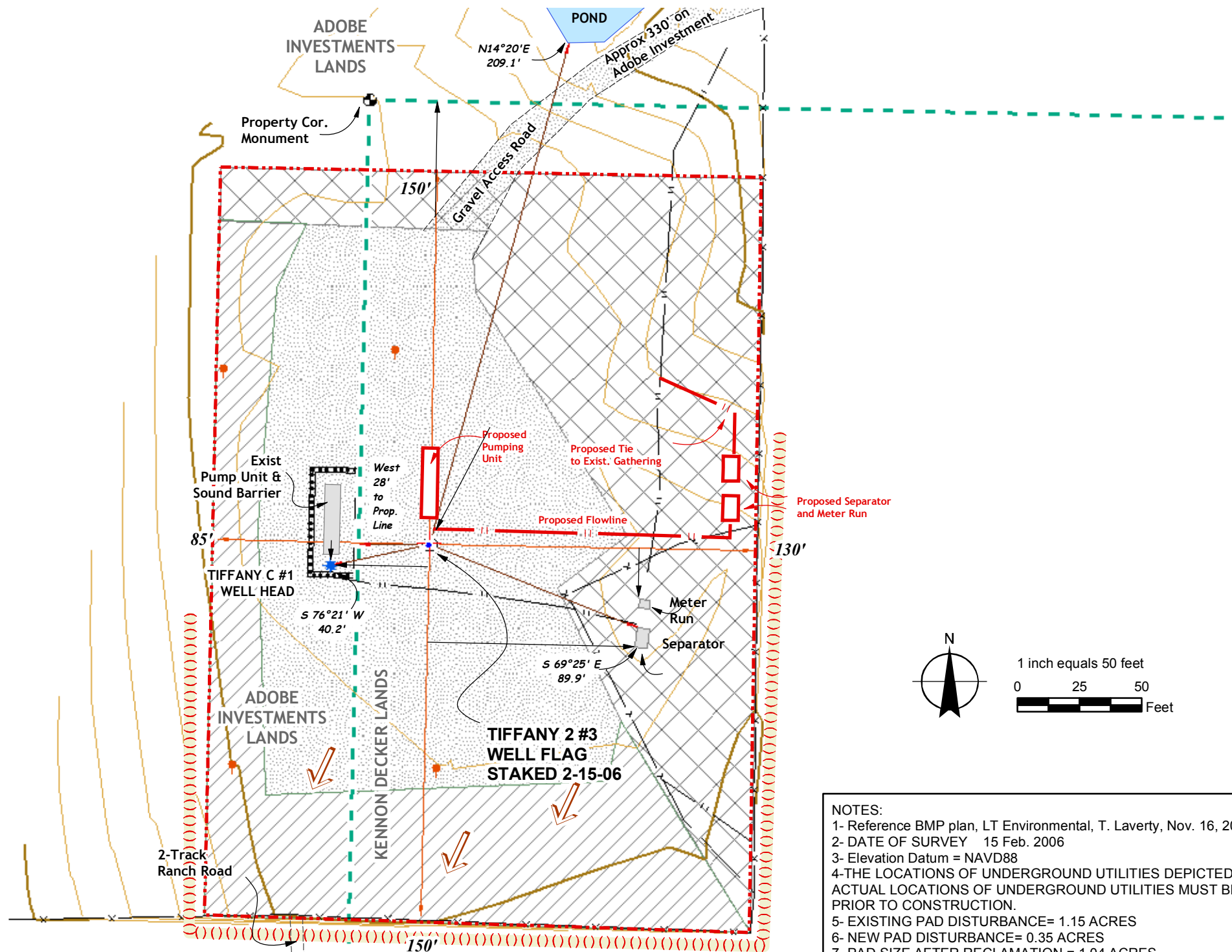
ACTIVE	COMPLETED	FINAL STABILIZATION
Access Roads (continued)		
Slope Drain	Vegetated Buffer	
Stabilized Construction Entrance	Water Bar	
Straw Bale Barrier	Wattles	
Surface Roughening/Ripping	Wind Fence	
Turnouts		
Vegetated Buffer		
Water Bar		
Wattles		
Wind Fence		

Notes:

BMP = Best Management Practice

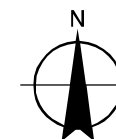


**GRADING AND DRAINAGE PLAN
XTO ENERGY INC. TIFFANY 2 #3
1110' FSL, 1295' FEL
SECTION 2, T-32-N, R-07-W, N.M.P.M.,
LA PLATA COUNTY, COLORADO**



Legend

- () () INSTALL EARTHEN BERMS
- ↑ LOCAL SLOPE DIRECTION
- RIG ANCHOR
- ADDENDUM_DIMENSIONS
- ⊕ WELL FLAG
- ⊙ WELL HEAD
- || — GAS AND H2O P/L'S
- x — FENCE
- 1FT CONTOUR
- 5FT CONTOUR
- PROPOSED PAD
- PARCEL BOUNDARY
- EXISTING EQUIPMENT
- NOISE ABATEMENT
- PROPOSED PAD EXPANSION
- GRAVEL_AREA
- USE EXIST. RECLAIMED AREA



1 inch equals 50 feet

0 25 50 Feet

NOTES:

- 1- Reference BMP plan, LT Environmental, T. Lavery, Nov. 16, 2009
- 2- DATE OF SURVEY 15 Feb. 2006
- 3- Elevation Datum = NAVD88
- 4- THE LOCATIONS OF UNDERGROUND UTILITIES DEPICTED ARE APPROXIMATE, ACTUAL LOCATIONS OF UNDERGROUND UTILITIES MUST BE FIELD VERIFIED PRIOR TO CONSTRUCTION.
- 5- EXISTING PAD DISTURBANCE= 1.15 ACRES
- 6- NEW PAD DISTURBANCE= 0.35 ACRES
- 7- PAD SIZE AFTER RECLAMATION = 1.04 ACRES



PROPOSED WILDLIFE BMP'S

Tiffany 2 #3 1,110' FSL & 1,295' FEL NENE Sec. 2, T32N, R7W, N.M.P.M

General Operating Practices

- ❖ The Tiffany 2 #3 will be drilled from the existing Tiffany C #1 well pad to reduce surface disturbance impacts.
 - Reduces area necessary for well pad construction.
 - Utilize existing infrastructure for operations.
- ❖ A closed-loop mud system will be used during drilling operations.
- ❖ Surface equipment that could be potentially damaging to wildlife will be fenced with livestock panels.
 - Prevents wildlife entry to potentially harmful equipment.
- ❖ The access road will be gated in order to restrict general public access.
- ❖ Construction, drilling and completion activities will be scheduled to avoid critical winter use periods for deer and elk December 1 - April 15.
- ❖ Recycle drilling fluids.
 - Mud systems are dewatered, recycled and water is reused during drilling operations, reducing the amount of water needed to be trucked for drilling operations.
 - Mud can be transported to next drilling location, reducing truck traffic to dispose of drilling fluids.
- ❖ Adhere to the developed weed management plan pursuant to both the La Plata County Land Use Code and Colorado Noxious Weed Act.
 - Protects the productivity of adjacent wildlife habitats.
- ❖ Screen exhaust and vent stacks to preclude avian perching.
- ❖ Educate employees and contractors on wildlife conservation practices, including no harassment or feeding of wildlife.
- ❖ Forbid use of firearms and dogs on location.
- ❖ Utilize bear proof dumpsters and trash receptacles for food related trash at all facilities that generate such trash.