

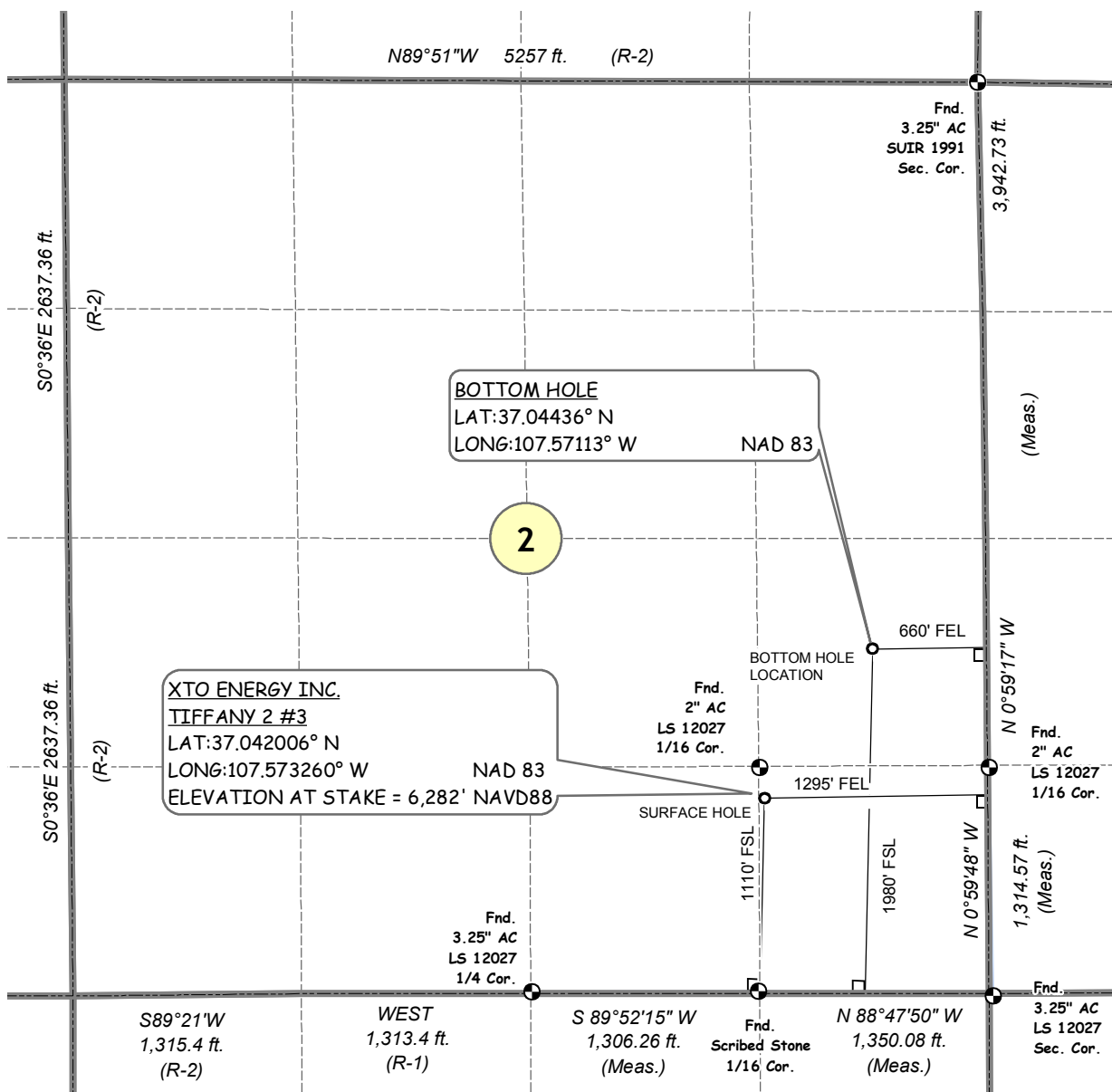
SURFACE HOLE: 1110' FSL, 1295' FEL
 BOTTOM HOLE LOCATION: 1980' FSL, 660' FEL,
 SECTION 2, T-32-N, R-07-W, N.M.P.M.,
 LA PLATA COUNTY, COLORADO
 LAT:37.042006° N
 LONG:107.573260° W NAD 83
 ELEVATION AT STAKE = 6,282' NAVD88

XTO ENERGY INC.
 TIFFANY 2 #3



0 500 1,000 Feet
 1 inch equals 1,000 feet

BASIS OF BEARING: AS MEASURED BY GPS BETWEEN FOUND MONUMENTS
 AT THE SOUTHEAST CORNER AND THE SOUTH SIXTEENTH CORNER ON THE EAST
 LINE OF SECTION 7, T-32-N, R-7-W, N.M.P.M., LA PLATA COUNTY, COLORADO,
 LINE BEARS N 0°59'48" W A DISTANCE OF 1,314.58 FEET.



NOTES:

1. SURFACE USE IS EXISTING WELL LOCATION AND GRAZING.
2. SEE ATTACHED ADDENDUM FOR IMPROVEMENTS,
AND PROPERTY LINES WITHIN 400' OF PROPOSED WELL.
3. DATE OF SURVEY 9 Apr 2006.
4. BASIS OF ELEVATION = NAVD88 AS PREDICTED BY GEOID09.
5. PDOP OF GPS OBSERVATION OF WELL STAKE = 2.1
6. FOOTAGE DIMENSION FIELD MEASURED AT 90° FROM SECTION LINES
7. (M) = FIELD MEASURED.
8. (R-1) = GLO RECORD PLAT APPROVED JAN 17, 1883
9. (R-2) = BLM RECORD PLAT ACCEPTED JUNE 7, 1994

GEOGRAPHIC POSITIONS

SURFACE
 LAT:37.04201° N LONG:107.57326° W NAD83
 LAT 37°02.5201' N LONG 107°34.3590' W NAD27
 BOTTOM HOLE
 LAT:37.04436° N LONG:107.57113° W NAD83
 LAT 37°02.6615' N LONG 107°34.2312' W NAD27

THIS IS TO CERTIFY THAT THE ABOVE PLAT WAS PREPARED
 FROM FIELD NOTES OF ACTUAL SURVEYS MADE BY ME OR
 UNDER MY DIRECT SUPERVISION AND THAT SAME ARE TRUE
 AND CORRECT TO THE BEST OF MY KNOWLEDGE AND BELIEF.

DAVID ALEXANDER JOHNSON LICENSE NO. 33648 DATE
 STATE OF COLORADO



XTO007NewsD.MXD 2010/08/08

