
BILL BARRETT CORPORATION E-BILL

**Werner 41D-26-692
MAMM CREEK
Garfield County , Colorado**

Cement Surface Casing
17-Jul-2010

Post Job Report

The Road to Excellence Starts with Safety

Sold To #: 343492		Ship To #: 2794478		Quote #:		Sales Order #: 7504347	
Customer: BILL BARRETT CORPORATION E-BILL				Customer Rep: South, Jodi			
Well Name: Werner			Well #: 41D-26-692			API/UWI #: 05-045-19253	
Field: MAMM CREEK		City (SAP): SILT		County/Parish: Garfield		State: Colorado	
Lat: N 39.508 deg. OR N 39 deg. 30 min. 27.184 secs.				Long: W 107.63 deg. OR W -108 deg. 22 min. 11.219 secs.			
Contractor: PROPETRO			Rig/Platform Name/Num: PROPETRO 1				
Job Purpose: Cement Surface Casing							
Well Type: Development Well				Job Type: Cement Surface Casing			
Sales Person: METLI, MARSHALL			Srv Supervisor: YOUNG, JEREMY			MBU ID Emp #: 418013	
Job Personnel							
HES Emp Name	Exp Hrs	Emp #	HES Emp Name	Exp Hrs	Emp #	HES Emp Name	Exp Hrs
BRUN, JUSTIN M	25	459269	HAYES, JESSE Doug	25	403601	STILLSON, ERIC W	25
YOUNG, JEREMY R	25	418013					
Equipment							
HES Unit #	Distance-1 way	HES Unit #	Distance-1 way	HES Unit #	Distance-1 way	HES Unit #	Distance-1 way
10616651C	120 mile	10784064	120 mile	10995025	120 mile	11006314	120 mile
11259881	120 mile						
Job Hours							
Date	On Location Hours	Operating Hours	Date	On Location Hours	Operating Hours	Date	On Location Hours
07/16/2010	22	0	07/17/2010	3	1.5		
TOTAL		<i>Total is the sum of each column separately</i>					
Job				Job Times			
Formation Name				Date		Time	Time Zone
Formation Depth (MD)	Top	Bottom		Called Out	16 - Jul - 2010	02:01	MST
Form Type	BHST			On Location	16 - Jul - 2010	02:01	MST
Job depth MD	803.6 ft		Job Depth TVD	803.6 ft	Job Started	17 - Jul - 2010	01:23
Water Depth	Wk Ht Above Floor			. ft	Job Completed	17 - Jul - 2010	02:11
Perforation Depth (MD)	From	To		Departed Loc			
Well Data							
Description	New / Used	Max pressure psig	Size in	ID in	Weight lbm/ft	Thread	Grade
OPEN HOLE				12.375			
SURFACE CASING	Unknown		9.625	8.921	36.		
Sales/Rental/3rd Party (HES)							
Description				Qty	Qty uom	Depth	Supplier
PLUG,CMTG,TOP,9 5/8,HWE,8.16 MIN/9.06 MA				1	EA		
Tools and Accessories							
Type	Size	Qty	Make	Depth	Type	Size	Qty
Guide Shoe					Packer		
Float Shoe					Bridge Plug		
Float Collar					Retainer		
Insert Float							
Stage Tool							
Miscellaneous Materials							
Gelling Agt		Conc		Surfactant		Conc	
Treatment Fld		Conc		Inhibitor		Conc	
				Acid Type		Qty	
				Sand Type		Size	

Fluid Data										
Stage/Plug #: 1										
Fluid #	Stage Type	Fluid Name	Qty	Qty uom	Mixing Density lbm/gal	Yield ft ³ /sk	Mix Fluid Gal/sk	Rate bbl/min	Total Mix Fluid Gal/sk	
1	WATER SPACER	FRESH WATER	20.00	bbl	8.33	.0	.0	4		
2	Lead Cement	VERSACEM (TM) SYSTEM (452010)	120.0	sacks	12.3	2.38	13.75	6	13.75	
	13.75 Gal	FRESH WATER								
3	Tail Cement	SWIFTCEM (TM) SYSTEM (452990)	120.0	sacks	14.2	1.43	6.88	6	6.72	
	6.715 Gal	FRESH WATER								
4	DISPLACEMENT	FRESH WATER	58.60	bbl	8.33	.0	.0	6		
Calculated Values		Pressures		Volumes						
Displacement	58.6	Shut In: Instant		Lost Returns	NO	Cement Slurry	81.5	Pad		
Top Of Cement	SURFACE	5 Min		Cement Returns	28	Actual Displacement	58.6	Treatment		
Frac Gradient		15 Min		Spacers	20	Load and Breakdown		Total Job	160	
Rates										
Circulating		Mixing	6	Displacement	6	Avg. Job	6			
Cement Left In Pipe	Amount	45.4 ft	Reason	Shoe Joint						
Frac Ring # 1 @	ID	Frac ring # 2 @	ID	Frac Ring # 3 @	ID	Frac Ring # 4 @	ID			
The Information Stated Herein Is Correct				Customer Representative Signature						

The Road to Excellence Starts with Safety

Sold To #: 343492	Ship To #: 2794478	Quote #:	Sales Order #: 7504347
Customer: BILL BARRETT CORPORATION E-BILL		Customer Rep: South, Jodi	
Well Name: Werner		Well #: 41D-26-692	API/UWI #: 05-045-19253
Field: MAMM CREEK	City (SAP): SILT	County/Parish: Garfield	State: Colorado
Legal Description:			
Lat: N 39.508 deg. OR N 39 deg. 30 min. 27.184 secs.		Long: W 107.63 deg. OR W -108 deg. 22 min. 11.219 secs.	
Contractor: PROPETRO		Rig/Platform Name/Num: PROPETRO 1	
Job Purpose: Cement Surface Casing			Ticket Amount:
Well Type: Development Well		Job Type: Cement Surface Casing	
Sales Person: METLI, MARSHALL		Srvc Supervisor: YOUNG, JEREMY	MBU ID Emp #: 418013

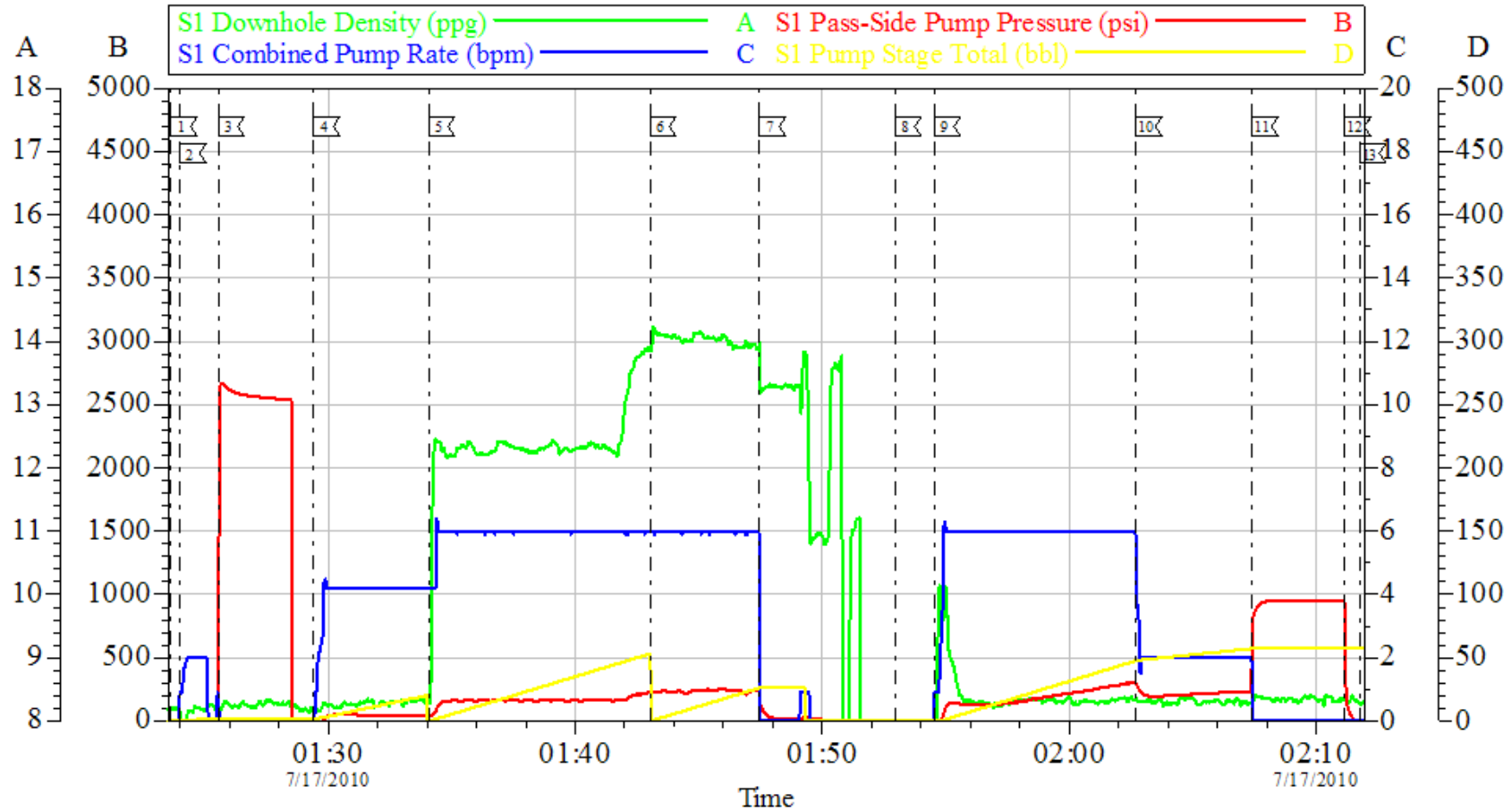
Activity Description	Date/Time	Cht #	Rate bbl/min	Volume bbl		Pressure psig		Comments
				Stage	Total	Tubing	Casing	
Call Out	07/16/2010 02:00							TD 825 FT, TP 803.55 FT, SHOE 45.4 FT, HOLE 12 3/8 IN, CSG 9 5/8 IN 36 LB/FT, NO MUD WT DUE TO HOLE BEING AIR DRILLED.
Arrive At Loc	07/16/2010 02:01							CEMENT CREW ALREADY ON LOCATION FROM PREVIOUS JOB
Assessment Of Location Safety Meeting	07/17/2010 00:25							WITH ALL HES PERSONNEL
Other	07/17/2010 00:30							SPOT EQUIPMENT
Pre-Rig Up Safety Meeting	07/17/2010 00:45							WITH ALL HES PERSONNEL
Rig-Up Equipment	07/17/2010 00:50							
Pre-Job Safety Meeting	07/17/2010 01:15							WITH ALL PERSONNEL ON LOCATION
Start Job	07/17/2010 01:23							NO CIRCULATION TO START JOB DUE TO HOLE BEING AIR DRILLED
Other	07/17/2010 01:24		2	2			18.0	FILL LINES
Test Lines	07/17/2010 01:25							TEST LINES TO 2680 PSI
Pump Spacer 1	07/17/2010 01:29		6	20			63.0	FRESH WATER
Pump Lead Cement	07/17/2010 01:34		6	50.9			239.0	120 SKS AT 12.3 PPG, 2.38 FT3/SK, 13.77 GAL/SK

Activity Description	Date/Time	Cht #	Rate bbl/ min	Volume bbl		Pressure psig		Comments
				Stage	Total	Tubing	Casing	
Pump Tail Cement	07/17/2010 01:43		6	30.6			250.0	120 SKS AT 14.2 PPG, 1.43 FT3/SK, 6.85 GAL/SK
Shutdown	07/17/2010 01:47							HES SAW RETURNS 21 BBLS INTO TAIL CEMENT
Drop Top Plug	07/17/2010 01:52							PLUG LAUNCHED. NO QUICK LATCH ATTACHMENT ON PLUG CONTAINER
Pump Displacement	07/17/2010 01:54		6	48.6			325.0	FRESH WATER
Slow Rate	07/17/2010 02:02		2	10			245.0	SLOW RATE 10 BBLS PRIOR TO CALCULATED DISPLACEMENT
Bump Plug	07/17/2010 02:07		2		58.6		960.0	PLUG BUMPED
Check Floats	07/17/2010 02:11							FLOATS HOLDING
End Job	07/17/2010 02:11							JOB PUMPED OFF LINE WITH SCREW IN HEAD. HES RETURNED 28 BBLS OF LEAD CEMENT TO SURFACE.
Pre-Rig Down Safety Meeting	07/17/2010 02:15							WITH ALL HES PERSONNEL
Rig-Down Equipment	07/17/2010 02:20							
Comment	07/17/2010 02:21							CEMENT CREW STAYED ON LOCATION FOR NEXT JOB
Comment	07/17/2010 02:22							THANK YOU FOR USING HALLIBURTON CEMENT DEPARTMENT. JEREMY YOUNG AND CREW

X_____

BILL BARRETT

9 5/8 SURFACE



Customer: BILL BARRETT	Job Date: 17-Jul-2010	Sales Order #: 7504347
Well Description: WERNER 41D-26-692	Job Type: SURFACE	ADC Used: YES
Company Rep: JODI SOUTH	Cement Supervisor: JEREMY YOUNG	Elite #/Operator: 4/JUSTIN BRUN

OptiCem v6.4.6
17-Jul-10 02:24