

BILL BARRETT CORPORATION E-BILL
DO NOT MAIL-1099 18TH ST,STE 2300W
DENVER, Colorado

Werner 34D-23-692

PROPETRO 1

Post Job Summary

Cement Surface Casing

Prepared for: JODI SOUTH
Date Prepared: 7/22/10
Version: 1

Service Supervisor: JAMISON, PRICE

Submitted by:

HALLIBURTON

The Road to Excellence Starts with Safety

The Road to Excellence Starts With Safety

Sold To #: 343492	Ship To #: 2794475	Quote #:	Sales Order #: 7506096
Customer: BILL BARRETT CORPORATION E-BILL		Customer Rep: South, Jodi	
Well Name: Werner		Well #: 34D-23-692	API/UWI #: 05-045-10716
Field: MAMM CREEK	City (SAP): Silt	County/Parish: Garfield	State: Colorado
Lat: N 39.507 deg. OR N 39 deg. 30 min. 26.536 secs.		Long: W 107.63 deg. OR W -108 deg. 22 min. 10.589 secs.	
Contractor: PROPETRO		Rig/Platform Name/Num: PROPETRO 1	
Job Purpose: Cement Surface Casing			
Well Type: Development Well		Job Type: Cement Surface Casing	
Sales Person: METLI, MARSHALL		Srv Supervisor: JAMISON, PRICE	MBU ID Emp #: 229155

Job Personnel

HES Emp Name	Exp Hrs	Emp #	HES Emp Name	Exp Hrs	Emp #	HES Emp Name	Exp Hrs	Emp #
HAYES, JESSE Doug		403601	JAMISON, PRICE W		229155	JENSEN, SHANE Lynn		441759

Equipment

HES Unit #	Distance-1 way	HES Unit #	Distance-1 way	HES Unit #	Distance-1 way	HES Unit #	Distance-1 way
10616651C	120 mile	10722398	120 mile	10995025	120 mile	11139330	120 mile
11259881	120 mile						

Job Hours

Date	On Location Hours	Operating Hours	Date	On Location Hours	Operating Hours	Date	On Location Hours	Operating Hours
7/21/10	18	0	7/22/10	3.5	1			

TOTAL	Total is the sum of each column separately							
--------------	--	--	--	--	--	--	--	--

Job

Formation Name					Date	Time	Time Zone
Formation Depth (MD)	Top	Bottom			Called Out	22 - Jul - 2010	00:10 MST
Form Type	BHST				On Location	22 - Jul - 2010	00:10 MST
Job depth MD	844.7 ft	Job Depth TVD	865. ft	Job Started	22 - Jul - 2010	01:49	MST
Water Depth		Wk Ht Above Floor	1. ft	Job Completed	22 - Jul - 2010	02:28	MST
Perforation Depth (MD)	From	To		Departed Loc	22 - Jul - 2010	03:30	MST

Well Data

Description	New / Used	Max pressure psig	Size in	ID in	Weight lbm/ft	Thread	Grade	Top MD ft	Bottom MD ft	Top TVD ft	Bottom TVD ft
OPEN HOLE				8.25				.	865.	.	865.
SURFACE CASING	Unknown		9.625	8.921	36.		J-55	.	844.7	.	844.8

Sales/Rental/3rd Party (HES)

Description	Qty	Qty uom	Depth	Supplier
PLUG,CMTG,TOP,9 5/8,HWE,8.16 MIN/9.06 MA	1	EA		
ADC (AUTO DENSITY CTRL) SYS, /JOB,ZI	1	JOB		
R/A DENSOMETER W/CHART RECORDER,/JOB,ZI	1	JOB		

Tools and Accessories

Type	Size	Qty	Make	Depth	Type	Size	Qty	Make	Depth	Type	Size	Qty	Make
Guide Shoe					Packer					Top Plug			
Float Shoe					Bridge Plug					Bottom Plug			
Float Collar					Retainer					SSR plug set			
Insert Float										Plug Container			
Stage Tool										Centralizers			

Miscellaneous Materials

Gelling Agt	Conc	Surfactant	Conc	Acid Type	Qty	Conc	%
Treatment Fld	Conc	Inhibitor	Conc	Sand Type	Size	Qty	

Fluid Data									
Stage/Plug #: 1									
Fluid #	Stage Type	Fluid Name	Qty	Qty uom	Mixing Density lbm/gal	Yield ft ³ /sk	Mix Fluid Gal/sk	Rate bbl/min	Total Mix Fluid Gal/sk
1	WATER SPACER		20.00	bbl	8.33	.0	.0	6.0	
2	LEAD CEMENT	VERSACEM (TM) SYSTEM (452010)	120.0	sacks	12.3	2.38	13.75	6.0	13.75
		13.75 Gal FRESH WATER							
3	TAIL CEMENT	SWIFTCES (TM) SYSTEM (452990)	120.0	sacks	14.2	1.43	6.88	6.0	6.72
		6.715 Gal FRESH WATER							
4	DISPLACEMENT		61.7	bbl	8.33	.0	.0	6.0	
Calculated Values		Pressures		Volumes					
Displacement	61.7	Shut In: Instant		Lost Returns	NO	Cement Slurry	81.3	Pad	
Top Of Cement	SURFACE	5 Min		Cement Returns	20	Actual Displacement	61.7	Treatment	
Frac Gradient		15 Min		Spacers	20	Load and Breakdown		Total Job	163
Rates									
Circulating		Mixing	6	Displacement	6	Avg. Job			6
Cement Left In Pipe	Amount	45.7 ft	Reason	Shoe Joint					
Frac Ring # 1 @	ID	Frac ring # 2 @	ID	Frac Ring # 3 @	ID	Frac Ring # 4 @	ID		
The Information Stated Herein Is Correct				Customer Representative Signature					

The Road to Excellence Starts with Safety

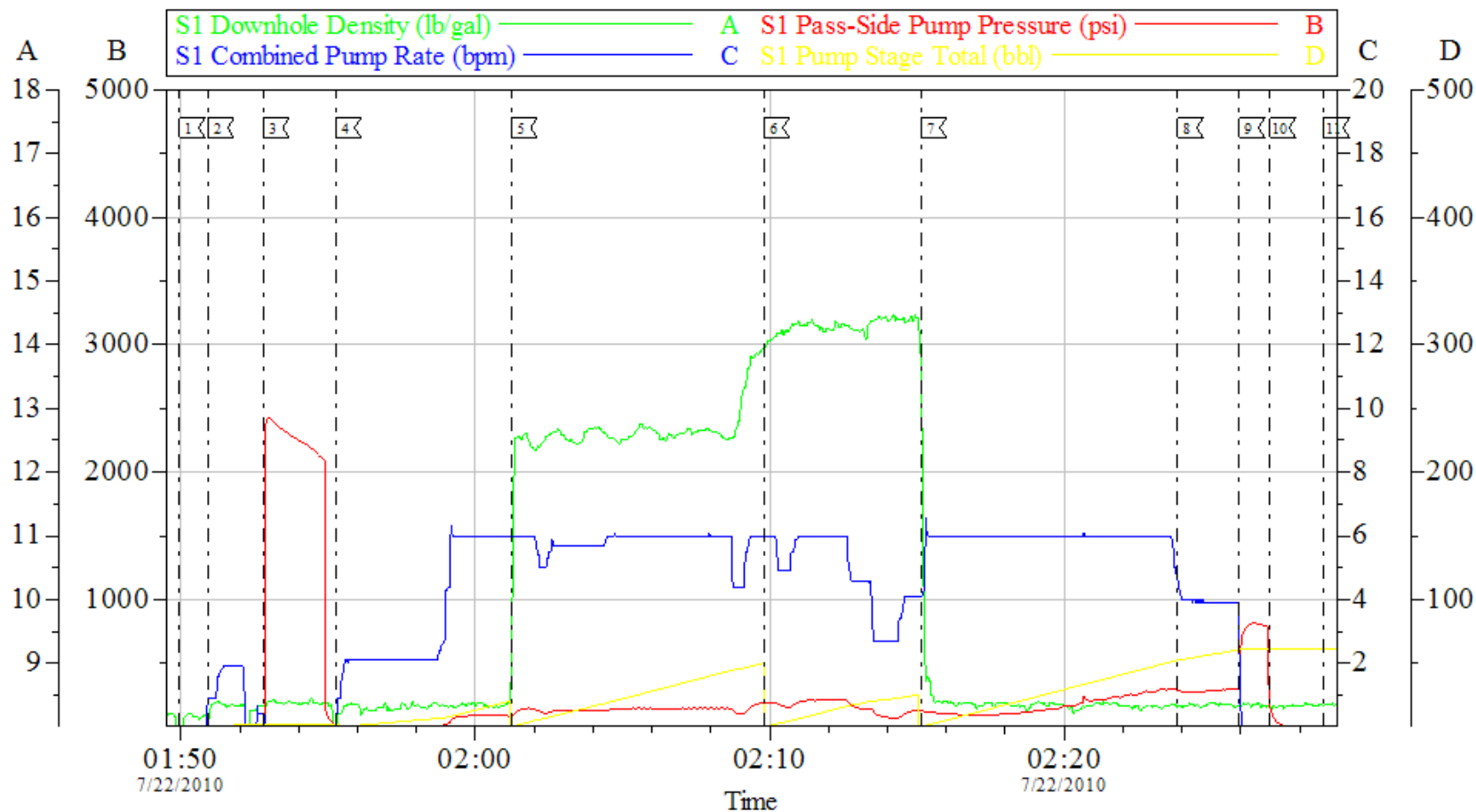
Sold To #: 343492		Ship To #: 2794475		Quote #:		Sales Order #: 7506096	
Customer: BILL BARRETT CORPORATION E-BILL				Customer Rep: South, Jodi			
Well Name: Werner			Well #: 34D-23-692			API/UWI #: 05-045-10716	
Field: MAMM CREEK		City (SAP): Silt		County/Parish: Garfield			State: Colorado
Legal Description:							
Lat: N 39.507 deg. OR N 39 deg. 30 min. 26.536 secs.				Long: W 107.63 deg. OR W -108 deg. 22 min. 10.589 secs.			
Contractor: PROPETRO			Rig/Platform Name/Num: PROPETRO 1				
Job Purpose: Cement Surface Casing						Ticket Amount:	
Well Type: Development Well			Job Type: Cement Surface Casing				
Sales Person: METLI, MARSHALL			Srvc Supervisor: JAMISON, PRICE			MBU ID Emp #: 229155	

Activity Description	Date/Time	Cht #	Rate bbl/min	Volume bbl		Pressure psig		Comments
				Stage	Total	Tubing	Casing	
Standby Rig	07/21/2010 06:00							CREW ON LOCATION
Pre-Rig Up Safety Meeting	07/22/2010 00:30							TD 865 HOLE SIZE 8.25 TP 844.65 SHOE JOINT 45.75 CASING 9.625 GRADE J-55 NO MUD WELL WAS AIR MIST DRILLED
Pre-Job Safety Meeting	07/22/2010 01:30							
Start Job	07/22/2010 01:49							
Prime Pumps	07/22/2010 01:50		2	2			8.0	FRESH WATER
Test Lines	07/22/2010 01:52						2000.0	
Pump Water	07/22/2010 01:55		6	20			88.0	FRESH WATER
Pump Lead Cement	07/22/2010 02:01		6	50.9			148.0	MIXED @ 12.3 PPG YIELD 2.38 WAT/REQ 13.77 120 SKS
Pump Tail Cement	07/22/2010 02:09		6	30.6			190.0	MIXED @ 14.2 PPG YIELD 1.43 WAT/REQ 6.85 120 SKS
Drop Plug	07/22/2010 02:15							
Pump Displacement	07/22/2010 02:15		6					FRESH WATER
Slow Rate	07/22/2010 02:23		4	52			300.0	
Bump Plug	07/22/2010 02:25		4	61.7			295.0	PRESSURED UP TO 811 PSI
Check Floats	07/22/2010 02:26							FLOATS HELD

Cementing Job Log

Activity Description	Date/Time	Cht #	Rate bbl/ min	Volume bbl		Pressure psig		Comments
				Stage	Total	Tubing	Casing	
End Job	07/22/2010 02:28							CEMENT BACK TO SURFACE 20 BBLS
Post-Job Safety Meeting (Pre Rig-Down)	07/22/2010 02:40							GOT RETURNS @ 8 BBLS AWAY ON DISPLACEMENT
Depart Location Safety Meeting	07/22/2010 03:25							CASING WAS NOT MOVED THROUGHOUT JOB
Crew Leave Location	07/22/2010 03:30							THANKS FOR USING HALLIBURTON BILL JAMISON & CREW

BILL BARRETT **9.625 SURFACE CASING**



Local Event Log								
1	START JOB	01:49:57	2	PRIME LINES	01:50:56	3	TEST LINES	01:52:48
4	START FRESH WATER SPACER	01:55:15	5	START LEAD CEMENT	02:01:14	6	START TAIL CEMENT	02:09:47
7	DROP PLUG START DISPLACEMENT	02:15:07	8	SLOW RATE	02:23:51	9	BUMP PLUG	02:25:56
10	CHECK FLOATS	02:26:59	11	END JOB	02:28:49			

Customer:	BILL BARRETT	Job Date:	22-Jul-2010	Sales Order #:	7506096
Well Description:	WERNER 34D-23-692	Job Type:	CEMENT	ADC Used:	YES
Company Rep:	JODI SOUTH	Cement Supervisor:	BILL JAMISON	Elite #:	4
					JESSE HAYES

HALLIBURTON
OptiCem v6.3.4
 22-Jul-10 02:52