

BILL BARRETT CORPORATION E-BILL  
DO NOT MAIL-1099 18TH ST,STE 2300W  
DENVER, Colorado

WERNER 34B-23-692

PROPETRO 1

## **Post Job Summary** **Cement Surface Casing**

Prepared for: JODI SOUTH  
Date Prepared: 7/23/10  
Version: 1

Service Supervisor: JAMISON, PRICE

Submitted by:

**HALLIBURTON**

## The Road to Excellence Starts with Safety

Sold To #: 343492	Ship To #: 2794448	Quote #:	Sales Order #: 7506112
Customer: BILL BARRETT CORPORATION E-BILL	Customer Rep: South, Jodi		
Well Name: WERNER	Well #: 34B-23-692	API/UWI #: 05-045-10717	
Field: MAMM CREEK	City (SAP): SILT	County/Parish: Garfield	State: Colorado
Lat: N 39.507 deg. OR N 39 deg. 30 min. 26.248 secs.	Long: W 107.63 deg. OR W -108 deg. 22 min. 10.589 secs.		
Contractor: PROPETRO	Rig/Platform Name/Num: PROPETRO 1		
Job Purpose: Cement Surface Casing			
Well Type: Development Well	Job Type: Cement Surface Casing		
Sales Person: METLI, MARSHALL	Srv Supervisor: JAMISON, PRICE	MBU ID Emp #: 229155	

### Job Personnel

HES Emp Name	Exp Hrs	Emp #	HES Emp Name	Exp Hrs	Emp #	HES Emp Name	Exp Hrs	Emp #
HAYES, JESSE Doug		403601	JAMISON, PRICE W		229155	JENSEN, SHANE Lynn		441759

### Equipment

HES Unit #	Distance-1 way	HES Unit #	Distance-1 way	HES Unit #	Distance-1 way	HES Unit #	Distance-1 way
10616651C	120 mile	10867425	120 mile	10897891	120 mile	10995025	120 mile
11259881	120 mile						

### Job Hours

Date	On Location Hours	Operating Hours	Date	On Location Hours	Operating Hours	Date	On Location Hours	Operating Hours
7/23/10	7.5	1						

TOTAL	Total is the sum of each column separately							
-------	--	--	--	--	--	--	--	--

### Job

Formation Name	Top	Bottom	Called Out	Date	Time	Time Zone
Formation Depth (MD)			On Location	23 - Jul - 2010	02:00	MST
Form Type	BHST		Job Started	23 - Jul - 2010	07:23	MST
Job depth MD	845.9 ft	Job Depth TVD	865. ft	Job Completed	23 - Jul - 2010	08:04
Water Depth		Wk Ht Above Floor	1. ft	Departed Loc	23 - Jul - 2010	09:30
Perforation Depth (MD)	From	To				

### Well Data

Description	New / Used	Max pressure psig	Size in	ID in	Weight lbm/ft	Thread	Grade	Top MD ft	Bottom MD ft	Top TVD ft	Bottom TVD ft
OPEN HOLE				12.25				.	865.	.	865.
SURFACE CASING	Unknown		9.625	8.921	36.		J-55	.	845.9	.	845.9

### Sales/Rental/3<sup>rd</sup> Party (HES)

Description	Qty	Qty uom	Depth	Supplier
PLUG,CMTG,TOP,9 5/8,HWE,8.16 MIN/9.06 MA	1	EA		

### Tools and Accessories

Type	Size	Qty	Make	Depth	Type	Size	Qty	Make	Depth	Type	Size	Qty	Make
Guide Shoe					Packer					Top Plug			
Float Shoe					Bridge Plug					Bottom Plug			
Float Collar					Retainer					SSR plug set			
Insert Float										Plug Container			
Stage Tool										Centralizers			

### Miscellaneous Materials

Gelling Agt	Conc	Surfactant	Conc	Acid Type	Qty	Conc	%
Treatment Fld	Conc	Inhibitor	Conc	Sand Type	Size	Qty	

Fluid Data										
Stage/Plug #: 1										
Fluid #	Stage Type	Fluid Name	Qty	Qty uom	Mixing Density lbm/gal	Yield ft <sup>3</sup> /sk	Mix Fluid Gal/sk	Rate bbl/min	Total Mix Fluid Gal/sk	
1	Water Spacer		20.00	bbl	8.33	.0	.0	6.0		
2	LEAD CEMENT	VERSACEM (TM) SYSTEM (452010)	120.0	sacks	12.3	2.38	13.75	6.0	13.75	
	13.75 Gal	FRESH WATER								
3	TAIL CEMENT	SWIFTCES (TM) SYSTEM (452990)	120.0	sacks	14.2	1.43	6.88	6.0	6.72	
	6.715 Gal	FRESH WATER								
4	Displacement		61.7	bbl	8.33	.0	.0	6.0		
Calculated Values		Pressures		Volumes						
Displacement	61.7	Shut In: Instant		Lost Returns	NO	Cement Slurry	81.3	Pad		
Top Of Cement	SURFACE	5 Min		Cement Returns	21	Actual Displacement	61.5	Treatment		
Frac Gradient		15 Min		Spacers	20	Load and Breakdown		Total Job	163	
Rates										
Circulating		Mixing	6	Displacement	6	Avg. Job	6			
Cement Left In Pipe	Amount	45.8 ft	Reason	Shoe Joint						
Frac Ring # 1 @	ID	Frac ring # 2 @	ID	Frac Ring # 3 @	ID	Frac Ring # 4 @	ID			
The Information Stated Herein Is Correct				Customer Representative Signature						

*The Road to Excellence Starts with Safety*

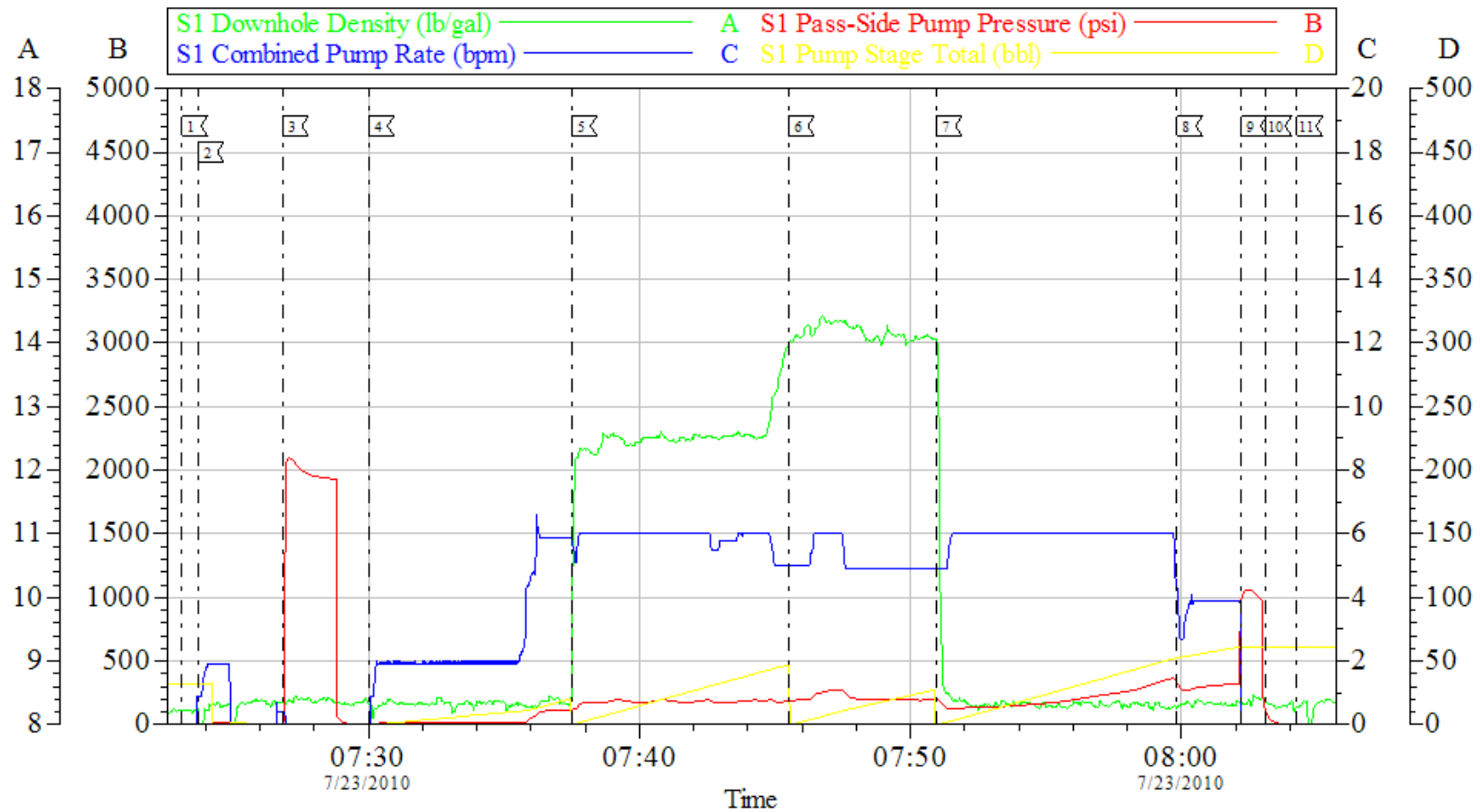
Sold To #: 343492		Ship To #: 2794448		Quote #:		Sales Order #: 7506112	
Customer: BILL BARRETT CORPORATION E-BILL				Customer Rep: South, Jodi			
Well Name: WERNER			Well #: 34B-23-692			API/UWI #: 05-045-10717	
Field: MAMM CREEK		City (SAP): SILT		County/Parish: Garfield			State: Colorado
Legal Description:							
Lat: N 39.507 deg. OR N 39 deg. 30 min. 26.248 secs.				Long: W 107.63 deg. OR W -108 deg. 22 min. 10.589 secs.			
Contractor: PROPETRO			Rig/Platform Name/Num: PROPETRO 1				
Job Purpose: Cement Surface Casing						Ticket Amount:	
Well Type: Development Well			Job Type: Cement Surface Casing				
Sales Person: METLI, MARSHALL			Srvc Supervisor: JAMISON, PRICE			MBU ID Emp #: 229155	

Activity Description	Date/Time	Cht #	Rate bbl/min	Volume bbl		Pressure psig		Comments
				Stage	Total	Tubing	Casing	
Call Out	07/22/2010 22:00							TD 865 HOLE SIZE 12.25 TP 845.9 SHOE JOINT 45.8 CASING 9.625 GRADE J-55 NO MUD WELL WAS AIR MIST DRILLED
Depart Yard Safety Meeting	07/22/2010 22:50							
Crew Leave Yard	07/22/2010 23:00							
Arrive At Loc	07/23/2010 02:00							
Assessment Of Location Safety Meeting	07/23/2010 02:10							
Pre-Rig Up Safety Meeting	07/23/2010 06:30							
Pre-Job Safety Meeting	07/23/2010 07:00							
Start Job	07/23/2010 07:23							
Prime Pumps	07/23/2010 07:23		2	2			13.0	FRESH WATER
Test Lines	07/23/2010 07:26						2000. 0	
Pump Water	07/23/2010 07:30		6	20			114.0	FRESH WATER
Pump Lead Cement	07/23/2010 07:37		6	50.9			195.0	MIXED @ 12.3 PPG YIELD 2.38 WAT/REQ 13.77 120 SKS
Pump Tail Cement	07/23/2010 07:45		6	30.6			275.0	MIXED @ 14.2 PPG YIELD 1.43 WAT/REQ 6.85 120 SKS
Drop Plug	07/23/2010 07:50							GOT RETURNES @ 10 BBLs AWAY ON DISPLACEMENT

Activity Description	Date/Time	Cht #	Rate bbl/min	Volume bbl		Pressure psig		Comments
				Stage	Total	Tubing	Casing	
Pump Displacement	07/23/2010 07:50		6					FRESH WATER
Slow Rate	07/23/2010 07:59		4	52			370.0	
Bump Plug	07/23/2010 08:02		4	61.8			315.0	PRESSURED UP TO 1050 PSI
Check Floats	07/23/2010 08:03							FLOATS HELD
End Job	07/23/2010 08:04							CEMENT BACK TO SURFACE 21 BBLS
Post-Job Safety Meeting (Pre Rig-Down)	07/23/2010 08:20							CASING WAS NOT MOVED THROUGHOUT JOB
Depart Location Safety Meeting	07/23/2010 09:20							
Crew Leave Location	07/23/2010 09:30							THANKS FOR USING HALLIBURTON BILL JAMISON & CREW

# BILL BARRETT

## 9.625 SURFACE CASING



Local Event Log			
1 START JOB	07:23:08	2 PRIME LINES	07:23:44
3 TEST LINES	07:26:51	4 START FRESH WATER SPACER	07:30:00
5 START LEAD CEMENT	07:37:30	6 START TAIL CEMENT	07:45:30
7 DROP PLUG / START DISPLACEMENT	07:50:58	8 SLOW RATE	07:59:49
9 BUMP PLUG	08:02:12	10 CHECK FLOATS	08:04:15
11 END JOB			

Customer: BILL BARRETT	Job Date: 23-Jul-2010	Sales Order #: 7506112
Well Description: WERNER 34B-23-692	Job Type: CEMENT	ADC Used: YES
Company Rep: JODI SOUTH	Cement Supervisor: BILL JAMISON	Elite #: 4 JESSE HAYES

**HALLIBURTON**  
 OptiCem v6.3.4  
 23-Jul-10 08:11