
BILL BARRETT CORPORATION E-BILL

**WERNER 44B-23-692
MAMM CREEK
Garfield County , Colorado**

Cement Surface Casing
15-Jul-2010

Post Job Report

The Road to Excellence Starts with Safety

Sold To #: 343492		Ship To #: 2794447		Quote #:		Sales Order #: 7495408	
Customer: BILL BARRETT CORPORATION E-BILL				Customer Rep: South, Jodi			
Well Name: WERNER			Well #: 44B-23-692		API/UWI #: 05-045-19234		
Field: MAMM CREEK		City (SAP): SILT		County/Parish: Garfield		State: Colorado	
Lat: N 39.508 deg. OR N 39 deg. 30 min. 27.5 secs.				Long: W 107.63 deg. OR W -108 deg. 22 min. 11.215 secs.			
Contractor: BILL BARRETT			Rig/Platform Name/Num: PETRO PLUS				
Job Purpose: Cement Surface Casing							
Well Type: Development Well				Job Type: Cement Surface Casing			
Sales Person: METLI, MARSHALL			Srvc Supervisor: YOUNG, JEREMY			MBU ID Emp #: 418013	
Job Personnel							
HES Emp Name	Exp Hrs	Emp #	HES Emp Name	Exp Hrs	Emp #	HES Emp Name	Exp Hrs
BRUN, JUSTIN M	10	459269	KUKUS, CRAIG A	10	369124	YOUNG, JEREMY R	10
Equipment							
HES Unit #	Distance-1 way	HES Unit #	Distance-1 way	HES Unit #	Distance-1 way	HES Unit #	Distance-1 way
10616651C	120 mile	10713212	120 mile	10741123	120 mile	10995025	120 mile
11259881	120 mile						
Job Hours							
Date	On Location Hours	Operating Hours	Date	On Location Hours	Operating Hours	Date	On Location Hours
07/15/2010	5	2					
TOTAL		<i>Total is the sum of each column separately</i>					
Job				Job Times			
Formation Name				Date		Time	Time Zone
Formation Depth (MD)	Top	Bottom		Called Out	15 - Jul - 2010	02:00	MST
Form Type	BHST			On Location	15 - Jul - 2010	06:45	MST
Job depth MD	845. ft	Job Depth TVD	845. ft	Job Started	15 - Jul - 2010	09:26	MST
Water Depth		Wk Ht Above Floor	. ft	Job Completed	15 - Jul - 2010	10:28	MST
Perforation Depth (MD)	From	To		Departed Loc			
Well Data							
Description	New / Used	Max pressure psig	Size in	ID in	Weight lbm/ft	Thread	Grade
OPEN HOLE				12.25			
SURFACE CASING	Unknown		9.625	8.921	36.		
Sales/Rental/3rd Party (HES)							
Description				Qty	Qty uom	Depth	Supplier
PLUG,CMTG,TOP,9 5/8,HWE,8.16 MIN/9.06 MA				1	EA		
Tools and Accessories							
Type	Size	Qty	Make	Depth	Type	Size	Qty
Guide Shoe					Packer		
Float Shoe					Bridge Plug		
Float Collar					Retainer		
Insert Float							
Stage Tool							
Miscellaneous Materials							
Gelling Agt		Conc		Surfactant		Conc	
Treatment Fld		Conc		Inhibitor		Conc	
				Acid Type		Qty	
				Sand Type		Size	

Fluid Data										
Stage/Plug #: 1										
Fluid #	Stage Type	Fluid Name	Qty	Qty uom	Mixing Density lbm/gal	Yield ft ³ /sk	Mix Fluid Gal/sk	Rate bbl/min	Total Mix Fluid Gal/sk	
1	WATER SPACER	FRESH WATER	20.00	bbl	8.33	.0	.0	5		
2	Lead Cement	VERSACEM (TM) SYSTEM (452010)	120.0	sacks	12.3	2.38	13.75	5	13.75	
	13.75 Gal	FRESH WATER								
3	Tail Cement	SWIFTCEM (TM) SYSTEM (452990)	120.0	sacks	14.2	1.43	6.88	5	6.72	
	6.715 Gal	FRESH WATER								
4	DISPLACEMENT	FRESH WATER	61.80	bbl	8.33	.0	.0	5		
Calculated Values		Pressures		Volumes						
Displacement	61.8	Shut In: Instant		Lost Returns	NO	Cement Slurry	81.5	Pad		
Top Of Cement	SURFACE	5 Min		Cement Returns	18	Actual Displacement	61.8	Treatment		
Frac Gradient		15 Min		Spacers	20	Load and Breakdown		Total Job	163.3	
Rates										
Circulating		Mixing	5	Displacement	5	Avg. Job	5			
Cement Left In Pipe	Amount	44.25 ft	Reason	Shoe Joint						
Frac Ring # 1 @	ID	Frac ring # 2 @	ID	Frac Ring # 3 @	ID	Frac Ring # 4 @	ID			
The Information Stated Herein Is Correct				Customer Representative Signature						

The Road to Excellence Starts with Safety

Sold To #: 343492	Ship To #: 2794447	Quote #:	Sales Order #: 7495408
Customer: BILL BARRETT CORPORATION E-BILL		Customer Rep: South, Jodi	
Well Name: WERNER	Well #: 44B-23-692	API/UWI #: 05-045-19234	
Field: MAMM CREEK	City (SAP): SILT	County/Parish: Garfield	State: Colorado
Legal Description:			
Lat: N 39.508 deg. OR N 39 deg. 30 min. 27.5 secs.		Long: W 107.63 deg. OR W -108 deg. 22 min. 11.215 secs.	
Contractor: BILL BARRETT		Rig/Platform Name/Num: PETRO PLUS	
Job Purpose: Cement Surface Casing			Ticket Amount:
Well Type: Development Well		Job Type: Cement Surface Casing	
Sales Person: METLI, MARSHALL		Srvc Supervisor: YOUNG, JEREMY	MBU ID Emp #: 418013

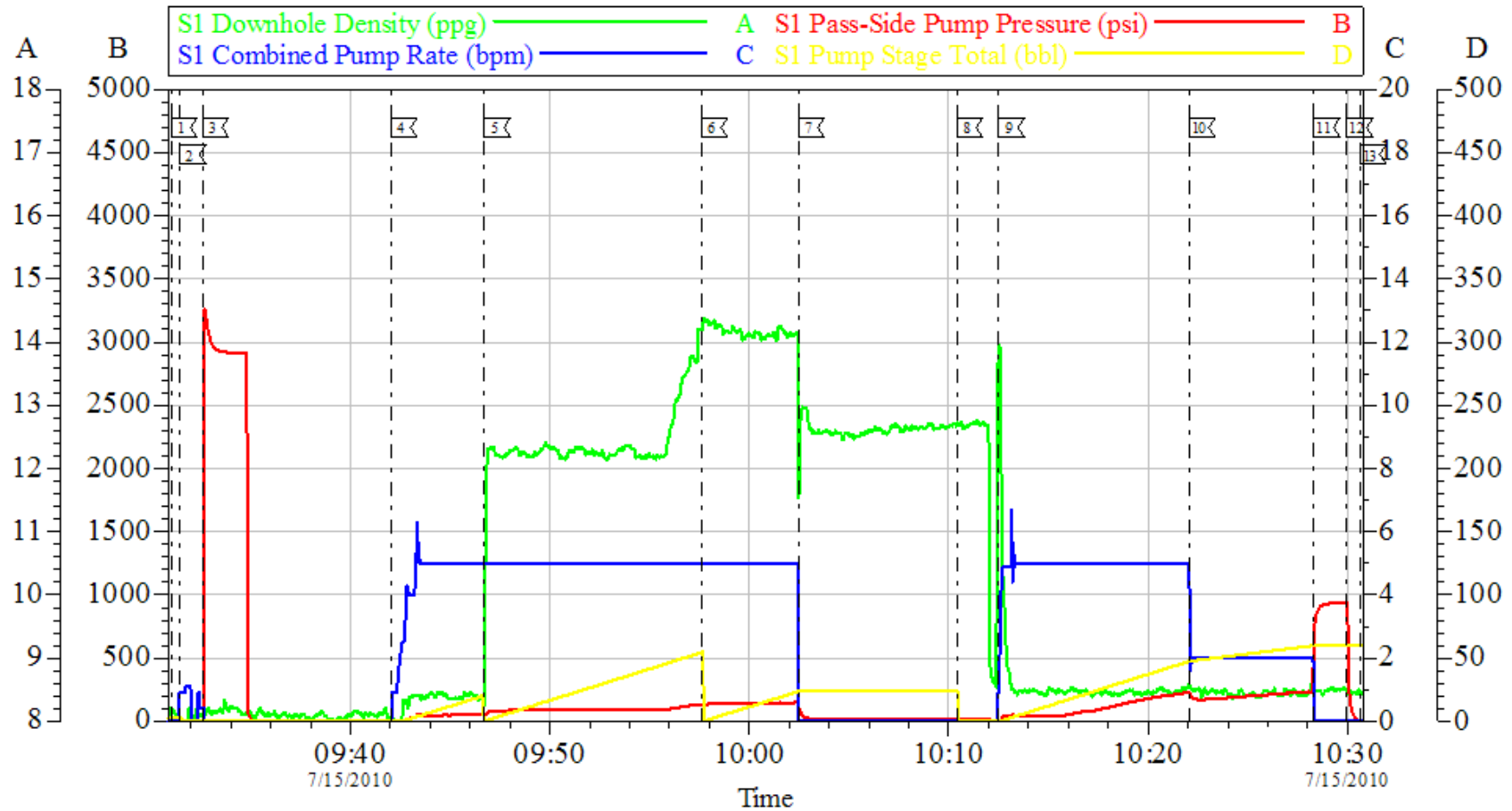
Activity Description	Date/Time	Cht #	Rate bbl/min	Volume bbl		Pressure psig		Comments
				Stage	Total	Tubing	Casing	
Call Out	07/15/2010 02:00							TD 865 FT, TP 844.83 FT, SHOE 45.25 FT, HOLE 12 1/4 IN, CSG 9 5/8 IN 36 LB/FT, NO MUD WT DUE TO HOLE BEING AIR DRILLED
Pre-Convoy Safety Meeting	07/15/2010 03:30							WITH ALL HES PERSONNEL
Arrive at Location from Service Center	07/15/2010 06:45							RIG WAS TRIPPING PIPE UPON HES ARRIVAL
Assessment Of Location Safety Meeting	07/15/2010 07:50							WITH ALL HES PERSONNEL
Other	07/15/2010 08:00							SPOT EQUIPMENT
Pre-Rig Up Safety Meeting	07/15/2010 08:20							WITH ALL HES PERSONNEL
Rig-Up Equipment	07/15/2010 08:30							
Pre-Job Safety Meeting	07/15/2010 09:15							WITH ALL PERSONNEL ON LOCATION
Start Job	07/15/2010 09:26							NO CIRCULATION AT START OF JOB DUE TO HOLE BEING AIR DRILLED.
Other	07/15/2010 09:26		2	2			18.0	FILL LINES
Test Lines	07/15/2010 09:27							PRESSURE NOT HOLDING. HES FIXED PROBLEM AND RESUMED JOB
Test Lines	07/15/2010 09:32							TEST LINES TO 2900 PSI. PRESSURE HOLDING

Activity Description	Date/Time	Cht #	Rate bbl/min	Volume bbl		Pressure psig		Comments
				Stage	Total	Tubing	Casing	
Pump Spacer 1	07/15/2010 09:42		5	20			65.0	FRESH WATER
Pump Lead Cement	07/15/2010 09:46		5	50.9			148.0	120 SKS AT 12.3 PPG, 2.38 FT3/SK, 13.75 GAL/SK
Pump Tail Cement	07/15/2010 09:57		5	30.6			160.0	120 SKS AT 14.2 PPG, 1.49 FT3/SK, 6.88 GAL/SK
Shutdown	07/15/2010 10:02							HES SAW RETURNS 20 BBLS INTO TAIL CEMENT
Drop Top Plug	07/15/2010 10:10							PLUG LAUNCHED. SCREW IN PLUG CONTAINER WAS ON BILL BARRETT MILLER PAD. PUMPED JOB THROUGH 9 5/8 IN SWEDGE.
Pump Displacement	07/15/2010 10:12		5	51.8			257.0	FRESH WATER
Slow Rate	07/15/2010 10:22		2	10			260.0	SLOW RATE 10 BBLS PRIOR TO CALCULATED DISPLACEMENT
Bump Plug	07/15/2010 10:28		2		61.8		948.0	PLUG BUMPED
Check Floats	07/15/2010 10:29							FLOATS HOLDING
End Job	07/15/2010 10:30							HES RETURNED 18 BBLS OF LEAD CEMENT TO SURFACE
Comment	07/15/2010 10:31							CEMENT CREW STAYED ON LOCATION FOR NEXT JOB.
Comment	07/15/2010 10:32							THANK YOU FOR USING HALLIBURTON CEMENT DEPARTMENT. JEREMY YOUNG AND CREW

X_____

BILL BARRETT

9 5/8 SURFACE



Local Event Log								
1	START JOB	09:31:00	2	FILL LINES	09:31:27	3	TEST LINES	09:32:35
4	PUMP H2O SPACER	09:42:02	5	PUMP LEAD CEMENT	09:46:43	6	PUMP TAIL CEMENT	09:57:37
7	SHUTDOWN	10:02:27	8	DROP TOP PLUG	10:10:24	9	PUMP DISPLACEMENT	10:12:30
10	SLOW RATE	10:22:04	11	BUMP PLUG	10:28:19	12	CHECK FLOATS	10:29:58
13	END JOB	10:30:38						

Customer:	BILL BARRETT	Job Date:	15-Jul-2010	Sales Order #:	7495408
Well Description:	WERNER 44B-23-692	Job Type:	SURFACE	ADC Used:	YES
Company Rep:	JODI SOUTH	Cement Supervisor:	JEREMY YOUNG	Elite #/Operator:	4/JUSTIN BRUN

OptiCem v6.4.6
15-Jul-10 10:43