

BILL BARRETT CORPORATION E-BILL
DO NOT MAIL-1099 18TH ST,STE 2300W
DENVER, Colorado

Werner 31C-26-692

PROPETRO 1

Post Job Summary **Cement Surface Casing**

Prepared for: JODI SOUTH
Date Prepared: 7/18/10
Version: 1

Service Supervisor: JAMISON, PRICE

Submitted by:

HALLIBURTON

The Road to Excellence Starts with Safety

The Road to Excellence Starts With Safety

Sold To #: 343492	Ship To #: 2794482	Quote #:	Sales Order #: 7504356
Customer: BILL BARRETT CORPORATION E-BILL		Customer Rep: South, Jody	
Well Name: Werner		Well #: 31C-26-692	API/UWI #: 05-045-19249
Field: MAMM CREEK	City (SAP): SILT	County/Parish: Garfield	State: Colorado
Lat: N 39.508 deg. OR N 39 deg. 30 min. 27.025 secs.		Long: W 107.63 deg. OR W -108 deg. 22 min. 11.093 secs.	
Contractor: PROPETRO		Rig/Platform Name/Num: PROPETRO 1	
Job Purpose: Cement Surface Casing			
Well Type: Development Well		Job Type: Cement Surface Casing	
Sales Person: METLI, MARSHALL		Srvc Supervisor: JAMISON, PRICE	MBU ID Emp #: 229155

Job Personnel

HES Emp Name	Exp Hrs	Emp #	HES Emp Name	Exp Hrs	Emp #	HES Emp Name	Exp Hrs	Emp #
HAYES, JESSE Doug		403601	JAMISON, PRICE W		229155	JENSEN, SHANE Lynn		441759
STILLSON, ERIC W		393789						

Equipment

HES Unit #	Distance-1 way	HES Unit #	Distance-1 way	HES Unit #	Distance-1 way	HES Unit #	Distance-1 way
10616651C	120 mile	10867423	120 mile	10897887	120 mile	10995025	120 mile
11259881	120 mile						

Job Hours

Date	On Location Hours	Operating Hours	Date	On Location Hours	Operating Hours	Date	On Location Hours	Operating Hours
7/18/10	4	1						

TOTAL	Total is the sum of each column separately							
--------------	--	--	--	--	--	--	--	--

Job

Formation Name				Date	Time	Time Zone
Formation Depth (MD)	Top	Bottom		Called Out	18 - Jul - 2010	10:30 MST
Form Type	BHST			On Location	18 - Jul - 2010	10:30 MST
Job depth MD	806. ft			Job Started	18 - Jul - 2010	00:00 MST
Water Depth	Wk Ht Above Floor			Job Completed	18 - Jul - 2010	00:00 MST
Perforation Depth (MD)	From	To		Departed Loc	18 - Jul - 2010	00:00 MST

Well Data

Description	New / Used	Max pressure psig	Size in	ID in	Weight lbm/ft	Thread	Grade	Top MD ft	Bottom MD ft	Top TVD ft	Bottom TVD ft
OPEN HOLE				12.25				.	825.	.	825.
SURFACE CASING	Unknown		9.625	8.921	36.		J-55	.	806.	.	806.

Sales/Rental/3rd Party (HES)

Description	Qty	Qty uom	Depth	Supplier
PLUG,CMTG,TOP,9 5/8,HWE,8.16 MIN/9.06 MA	1	EA		
ADC (AUTO DENSITY CTRL) SYS, /JOB,ZI	1	JOB		
R/A DENSOMETER W/CHART RECORDER,/JOB,ZI	1	JOB		
PORT. DAS W/CEMWIN;ACQUIRE W/HES, ZI	1	JOB		

Tools and Accessories

Type	Size	Qty	Make	Depth	Type	Size	Qty	Make	Depth	Type	Size	Qty	Make
Guide Shoe					Packer					Top Plug			
Float Shoe					Bridge Plug					Bottom Plug			
Float Collar					Retainer					SSR plug set			
Insert Float										Plug Container			
Stage Tool										Centralizers			

Miscellaneous Materials

Gelling Agt	Conc	Surfactant	Conc	Acid Type	Qty	Conc	%
Treatment Fld	Conc	Inhibitor	Conc	Sand Type	Size	Qty	

Fluid Data									
Stage/Plug #: 1									
Fluid #	Stage Type	Fluid Name	Qty	Qty uom	Mixing Density lbm/gal	Yield ft ³ /sk	Mix Fluid Gal/sk	Rate bbl/min	Total Mix Fluid Gal/sk
1	WATER SPACER		20.00	bbl	8.33	.0	.0	6.0	
2	LEAD CEMENT	VERSACEM (TM) SYSTEM (452010)	120.0	sacks	12.3	2.38	13.75	6.0	13.75
		13.75 Gal FRESH WATER							
3	TAIL CEMENT	SWIFTCES (TM) SYSTEM (452990)	120.0	sacks	14.2	1.43	6.88	6.0	6.72
		6.715 Gal FRESH WATER							
4	DISPLACEMENT		58.00	bbl	8.33	.0	.0	6.0	
Calculated Values		Pressures		Volumes					
Displacement	58.7	Shut In: Instant		Lost Returns	NO	Cement Slurry	81.3	Pad	
Top Of Cement	SURFACE	5 Min		Cement Returns	23	Actual Displacement	59	Treatment	
Frac Gradient		15 Min		Spacers	20	Load and Breakdown		Total Job	160
Rates									
Circulating		Mixing	6	Displacement	6	Avg. Job	6		
Cement Left In Pipe	Amount	45.7 ft	Reason	Shoe Joint					
Frac Ring # 1 @	ID	Frac ring # 2 @	ID	Frac Ring # 3 @	ID	Frac Ring # 4 @	ID		
The Information Stated Herein Is Correct				Customer Representative Signature					

The Road to Excellence Starts with Safety

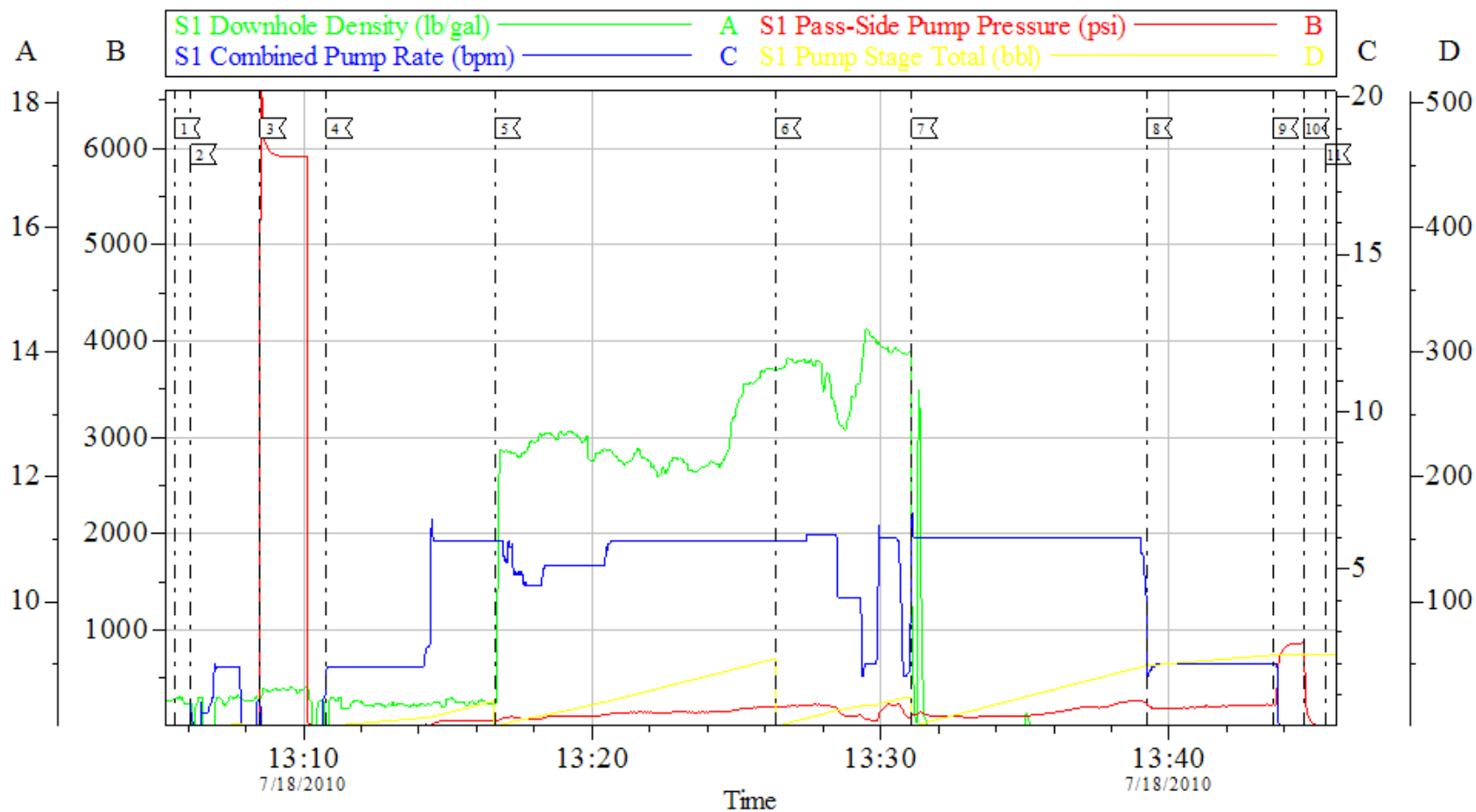
Sold To #: 343492	Ship To #: 2794482	Quote #:	Sales Order #: 7504356
Customer: BILL BARRETT CORPORATION E-BILL		Customer Rep: South, Jody	
Well Name: Werner	Well #: 31C-26-692	API/UWI #: 05-045-19249	
Field: MAMM CREEK	City (SAP): SILT	County/Parish: Garfield	State: Colorado
Legal Description:			
Lat: N 39.508 deg. OR N 39 deg. 30 min. 27.025 secs.		Long: W 107.63 deg. OR W -108 deg. 22 min. 11.093 secs.	
Contractor: PROPETRO		Rig/Platform Name/Num: PROPETRO 1	
Job Purpose: Cement Surface Casing			Ticket Amount:
Well Type: Development Well		Job Type: Cement Surface Casing	
Sales Person: METLI, MARSHALL		Srv Supervisor: JAMISON, PRICE	MBU ID Emp #: 229155

Activity Description	Date/Time	Cht #	Rate bbl/min	Volume bbl		Pressure psig		Comments
				Stage	Total	Tubing	Casing	
Call Out	07/18/2010 10:30							TD 825 HOLE SIZE 12.25 TP 806 CASING 9 5/8 36 # GRADE J-55 SHOE JOINT 45.7 NO MUD WELL WAS AIR MIST DRILLED
Assessment Of Location Safety Meeting	07/18/2010 11:02							
Pre-Rig Up Safety Meeting	07/18/2010 11:10							
Pre-Job Safety Meeting	07/18/2010 12:50							
Start Job	07/18/2010 13:05							
Prime Pumps	07/18/2010 13:06		2	2			14.0	FRESH WATER
Test Lines	07/18/2010 13:08						2000. 0	
Pump Water	07/18/2010 13:10		6	20			45.0	FRESH WATER
Pump Lead Cement	07/18/2010 13:16		6	50.9			57.0	MIXED @ 12.3 PPG YIELD 2.38 WAT/REQ 13.77 120 SKS
Pump Tail Cement	07/18/2010 13:26		6	30.6			145.0	MIXED @ 14.2 PPG YIELD 1.43 WAT/REQ 6.85 120 SKS
Drop Plug	07/18/2010 13:31							GOT CIRCULATION ON DISPLACEMENT
Pump Displacement	07/18/2010 13:31		6					FRESH WATER
Slow Rate	07/18/2010 13:39		2	48			270.0	
Bump Plug	07/18/2010 13:43		2	58.8			250.0	PRESSURED UP TO 780 PSI

Activity Description	Date/Time	Cht #	Rate bbl/ min	Volume bbl		Pressure psig		Comments
				Stage	Total	Tubing	Casing	
Check Floats	07/18/2010 13:44							FLOATS HELD
End Job	07/18/2010 13:45							
Post-Job Safety Meeting (Pre Rig-Down)	07/18/2010 13:50							CEMENT BACK TO SURFACE 23 BBLS
Depart Location Safety Meeting	07/18/2010 14:30							CASING WAS MOVED THROUGHOUT JOB
Crew Leave Location	07/18/2010 14:50							THANKS FOR USING HALLIBURTON BILL JAMISON & CREW

BILL BARRETT

9.625 SURFACE CASING



Local Event Log

1 START JOB	13:05:32	2 PRIME LINES	13:06:05	3 TEST LINES	13:08:30
4 START FRESH WATER SPACER	13:10:48	5 START LEAD CEMENT	13:16:37	6 START TAIL CEMENT	13:26:20
7 DROP PLUG / START DISPLACEMENT	13:31:05	8 SLOW RATE	13:39:12	9 BUMP PLUG	13:43:36
10 CHECK FLOATS	13:44:40	11 END JOB	13:45:24		

Customer: BILL BARRETT
Well Description: 31C-26-692
Company Rep: JODI SOUTH

Job Date: 18-Jul-2010
Job Type: CEMENT
Cement Supervisor: BILL JAMISON

Sales Order #: 7504356
ADC Used: YES
Elite #: 4 JESSE HAYES

HALLIBURTON
OptiCem v6.3.4
18-Jul-10 13:54