

BILL BARRETT CORPORATION E-BILL  
DO NOT MAIL-1099 18TH ST,STE 2300W  
DENVER, Colorado

GGU BARGE FED  
GGU BARGE FED 32D-32-691

**BARRETT/PETRO PLUS**

## **Post Job Summary** **Cement Surface Casing**

Prepared for:  
Date Prepared:  
Version: 1

Service Supervisor: SMITH, DUSTIN

Submitted by:

**HALLIBURTON**

## The Road to Excellence Starts with Safety

The Road to Excellence Starts With Safety

Sold To #: 343492	Ship To #: 2800892	Quote #:	Sales Order #: 7565568
Customer: BILL BARRETT CORPORATION E-BILL		Customer Rep: South, Jodi	
Well Name: GGU BARGE FED		Well #: 32D-32-691	API/UWI #: 05-045-19453
Field: MAMM CREEK	City (SAP): Silt	County/Parish: Garfield	State: Colorado
Lat: N 39.486 deg. OR N 39 deg. 29 min. 9.701 secs.		Long: W 107.58 deg. OR W -108 deg. 25 min. 12.38 secs.	
Contractor: BARRETT		Rig/Platform Name/Num: PETRO PLUS	
Job Purpose: Cement Surface Casing			
Well Type: Development Well		Job Type: Cement Surface Casing	
Sales Person: METLI, MARSHALL		Srv Supervisor: SMITH, DUSTIN	MBU ID Emp #: 418015

## Job Personnel

HES Emp Name	Exp Hrs	Emp #	HES Emp Name	Exp Hrs	Emp #	HES Emp Name	Exp Hrs	Emp #
HOEFER, DENNIS	3	369666	SLAUGHTER, JESSE Dean	3	454315	SMITH, DUSTIN Michael	3	418015

## Equipment

HES Unit #	Distance-1 way	HES Unit #	Distance-1 way	HES Unit #	Distance-1 way	HES Unit #	Distance-1 way
10296152C	120 mile	10565341	120 mile	10804567	120 mile	10897797	120 mile
11259882	120 mile						

## Job Hours

Date	On Location Hours	Operating Hours	Date	On Location Hours	Operating Hours	Date	On Location Hours	Operating Hours
80/19/10	3	2						

TOTAL	Total is the sum of each column separately							
-------	--	--	--	--	--	--	--	--

## Job

## Job Times

Formation Name					Date	Time	Time Zone
Formation Depth (MD)	Top		Bottom		Called Out		
Form Type	BHST				On Location		
Job depth MD	830. ft		Job Depth TVD	809.7 ft	Job Started	19 - Aug - 2010	15:00 MST
Water Depth			Wk Ht Above Floor	. ft	Job Completed	19 - Aug - 2010	15:37 MST
Perforation Depth (MD)	From		To		Departed Loc	19 - Aug - 2010	17:00 MST

## Well Data

Description	New / Used	Max pressure psig	Size in	ID in	Weight lbm/ft	Thread	Grade	Top MD ft	Bottom MD ft	Top TVD ft	Bottom TVD ft
-------------	------------	-------------------	---------	-------	---------------	--------	-------	-----------	--------------	------------	---------------

Sales/Rental/3<sup>rd</sup> Party (HES)

Description	Qty	Qty uom	Depth	Supplier
PLUG,CMTG,TOP,9 5/8,HWE,8.16 MIN/9.06 MA	1	EA		
R/A DENSOMETER W/CHART RECORDER,/JOB,ZI	1	JOB		
PORT. DATA ACQUIS. W/OPTICEM RT W/HES	1	EA		
ADC (AUTO DENSITY CTRL) SYS, /JOB,ZI	1	JOB		

## Tools and Accessories

Type	Size	Qty	Make	Depth	Type	Size	Qty	Make	Depth	Type	Size	Qty	Make
Guide Shoe					Packer					Top Plug	9 5/8	1	
Float Shoe					Bridge Plug					Bottom Plug			
Float Collar					Retainer					SSR plug set			
Insert Float										Plug Container	9 5/8	1	
Stage Tool										Centralizers			

## Miscellaneous Materials

Gelling Agt	Conc	Surfactant	Conc	Acid Type	Qty	Conc	%
Treatment Fld	Conc	Inhibitor	Conc	Sand Type	Size	Qty	

## Fluid Data

Stage/Plug #: 1									
Fluid #	Stage Type	Fluid Name	Qty	Qty uom	Mixing Density lbm/gal	Yield ft <sup>3</sup> /sk	Mix Fluid Gal/sk	Rate bbl/min	Total Mix Fluid Gal/sk

1	Water Spacer		10.00	bbl	.	.0	.0	6.0	
2	Lead Cement	VERSACEM (TM) SYSTEM (452010)	120.0	sacks	12.3	2.38	13.75	6	13.75
	13.75 Gal	FRESH WATER							
3	Tail Cement	SWIFTCEM (TM) SYSTEM (452990)	120.0	sacks	14.2	1.43	6.88	6	6.72
	6.715 Gal	FRESH WATER							
4	Displacement			bbl	.	.0	.0	6.0	
Calculated Values		Pressures		Volumes					
Displacement	59.2	Shut In: Instant		Lost Returns	0	Cement Slurry	81.5	Pad	
Top Of Cement	SURFACE	5 Min		Cement Returns	30	Actual Displacement	59.2	Treatment	
Frac Gradient		15 Min		Spacers	10	Load and Breakdown		Total Job	150.7
Rates									
Circulating		Mixing	6	Displacement	6	Avg. Job			6
Cement Left In Pipe	Amount	43.98 ft	Reason	Shoe Joint					
Frac Ring # 1 @	ID	Frac ring # 2 @	ID	Frac Ring # 3 @	ID	Frac Ring # 4 @	ID		
The Information Stated Herein Is Correct				Customer Representative Signature					

*The Road to Excellence Starts with Safety*

<b>Sold To #:</b> 343492		<b>Ship To #:</b> 2800892		<b>Quote #:</b>		<b>Sales Order #:</b> 7565568	
<b>Customer:</b> BILL BARRETT CORPORATION E-BILL				<b>Customer Rep:</b> South, Jodi			
<b>Well Name:</b> GGU BARGE FED			<b>Well #:</b> 32D-32-691		<b>API/UWI #:</b> 05-045-19453		
<b>Field:</b> MAMM CREEK		<b>City (SAP):</b> Silt		<b>County/Parish:</b> Garfield			<b>State:</b> Colorado
<b>Legal Description:</b>							
<b>Lat:</b> N 39.486 deg. OR N 39 deg. 29 min. 9.701 secs.				<b>Long:</b> W 107.58 deg. OR W -108 deg. 25 min. 12.38 secs.			
<b>Contractor:</b> BARRETT			<b>Rig/Platform Name/Num:</b> PETRO PLUS				
<b>Job Purpose:</b> Cement Surface Casing						<b>Ticket Amount:</b>	
<b>Well Type:</b> Development Well			<b>Job Type:</b> Cement Surface Casing				
<b>Sales Person:</b> METLI, MARSHALL			<b>Srvc Supervisor:</b> SMITH, DUSTIN			<b>MBU ID Emp #:</b> 418015	

Activity Description	Date/Time	Cht #	Rate bbl/ min	Volume bbl		Pressure psig		Comments
				Stage	Total	Tubing	Casing	
Assessment Of Location Safety Meeting	08/19/2010 14:00							ALL HES EMPLOYEES
Pre-Rig Up Safety Meeting	08/19/2010 14:10							ALL HES EMPLOYEES
Rig-Up Equipment	08/19/2010 14:15							RIG UP COMPLETED AT END OF LAST JOB CREW STAYED ON LOCATION
Pre-Job Safety Meeting	08/19/2010 14:40							ALL HES EMPLOYEES AND RIG CREW
Rig-Up Completed	08/19/2010 14:50							TD: 830 TP: 809.68 SJ: 43.98 9 5/8 36# CSG 12 3/8 OH
Start Job	08/19/2010 15:00							JOB PUMPED OFFLINE, HOLE DRILLED WITH AIR, NO FLUID IN WELLBORE AT TIME OF CEMENT PIPE STATIC AT TIME OF CEMENT JOB NO QUICK LATCH USED ON CEMENT HEAD
Test Lines	08/19/2010 15:00					2645.0		PRESSURE TEST OK
Pump Spacer	08/19/2010 15:03		6	10	10		56.0	FRESH WATER
Pump Lead Cement	08/19/2010 15:10		6	50.9	50.9		155.0	120 SKS 12.3 PPG 2.38 YIELD 13.77 GAL/SK
Pump Tail Cement	08/19/2010 15:18		6	30.6	30.6		175.0	120 SKS 14.2 PPG 1.43 YIELD 6.85 GAL/SK DOWNHOLE DENSOMETER DROPPED OFF TO 0 THEN CAME RIGHT BACK UP TO WEIGHT
Shutdown	08/19/2010 15:24							

Sold To # : 343492

Ship To # :2800892

Quote # :

Sales Order # :

7565568

SUMMIT Version: 7.20.130

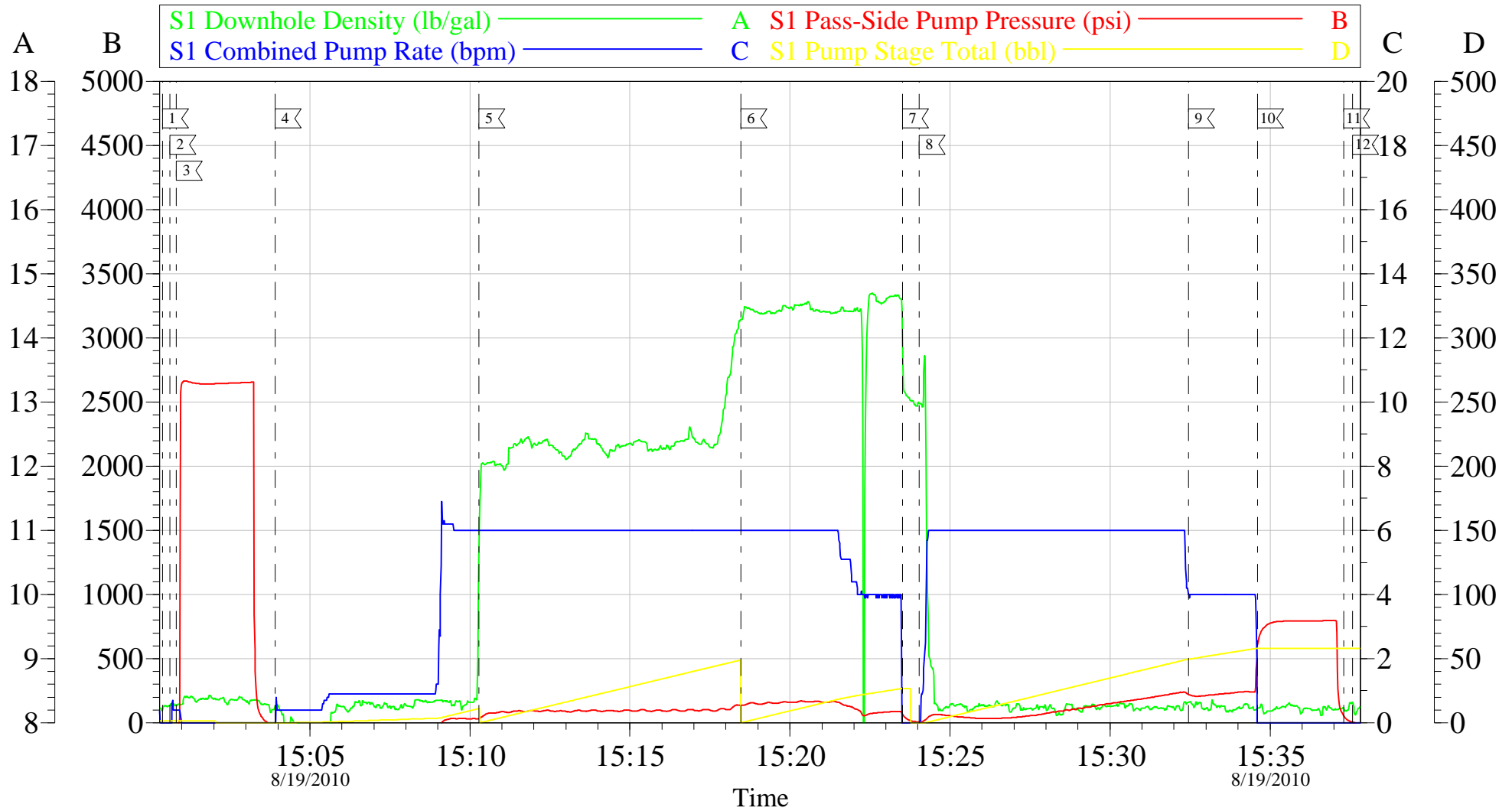
Thursday, August 19, 2010 03:49:00

## Cementing Job Log

Activity Description	Date/Time	Cht #	Rate bbl/min	Volume bbl		Pressure psig		Comments
				Stage	Total	Tubing	Casing	
Drop Plug	08/19/2010 15:24							PLUG AWAY NO PROBLEMS
Pump Displacement	08/19/2010 15:24		6	59.2	59.2		223.0	FRESH WATER GOT RETURNS 20 BBLS INTO DISPLACEMENT
Slow Rate	08/19/2010 15:32		4	49.2	49.2		285.0	
Bump Plug	08/19/2010 15:34		4	59.2	59.2		807.0	
Check Floats	08/19/2010 15:37							FLOATS HELD
End Job	08/19/2010 15:37							30 BBLS CEMENT TO SURFACE TOPPED OUT PREVIOUS WELLS WITH CEMENT RETURNS
Pre-Rig Down Safety Meeting	08/19/2010 15:50							ALL HES EMPLOYEES
Rig-Down Completed	08/19/2010 16:30							
Pre-Convoy Safety Meeting	08/19/2010 16:40							ALL HES EMPLOYEES
Crew Leave Location	08/19/2010 17:00							THANK YOU FOR USING HALLIBURTON CEMENT DUSTIN SMITH AND CREW

# BILL BARRETT

## GGU BARGE FED 32D-32-691 9 5/8 SURFACE



Local Event Log					
1	STAR JOB	15:00:23	2	FILL LINES	15:00:38
3	TEST LINES	15:00:50	4	PUIMP SPACER	15:03:55
5	PUMP LEAD CEMENT	15:10:17	6	PUMP TAIL CEMENT	15:18:28
7	SHUTDOWN/ DROP PLUG	15:23:31	8	PUMP DISPLACEMENT	15:24:02
9	SLOW RATE	15:32:27	10	BUMP PLUG	15:34:36
11	CHECK FLOATS	15:37:18	12	END JOB	15:37:35

Customer:	BILL BARRETT	Job Date:	19-Aug-2010	Sales Order #:	7565568
Well Description:	GGU BARGE FED 32D-32-691	Job Type:	9 5/8 SURFACE	ADC Used:	YES
Company Rep:	JODI SOUTH	Cement Supervisor:	DUSTIN SMITH	Elite #:	9
					JESSE SLAUGHTER

OptiCem v6.4.8  
19-Aug-10 15:44