

BILL BARRETT CORPORATION E-BILL
DO NOT MAIL-1099 18TH ST,STE 2300W
DENVER, Colorado

GGU FED
GGU FED 32C-32-691

BILL BARRETT /PRO PETRO

Post Job Summary

Cement Surface Casing

Prepared for:
Date Prepared:
Version: 1

Service Supervisor: SMITH, DUSTIN

Submitted by:

HALLIBURTON

The Road to Excellence Starts with Safety

The Road to Excellence Starts With Safety

Sold To #: 343492	Ship To #: 2800893	Quote #:	Sales Order #: 7565567
Customer: BILL BARRETT CORPORATION E-BILL		Customer Rep: South, Jodi	
Well Name: GGU FED		Well #: 32C-32-691	API/UWI #:
Field: PICEANCE	City (SAP):	County/Parish: Garfield	State: Colorado
Contractor: PROPETRO		Rig/Platform Name/Num: PRO PETRO	
Job Purpose: Cement Surface Casing			
Well Type: Development Well		Job Type: Cement Surface Casing	
Sales Person: METLI, MARSHALL		Srv Supervisor: SMITH, DUSTIN	MBU ID Emp #: 418015

Job Personnel

HES Emp Name	Exp Hrs	Emp #	HES Emp Name	Exp Hrs	Emp #	HES Emp Name	Exp Hrs	Emp #
LEIST, JAMES R	4	362787	SALAZAR, PAUL Omar	4	445614	SLAUGHTER, JESSE Dean	4	454315
SMITH, DUSTIN Michael	4	418015						

Equipment

HES Unit #	Distance-1 way	HES Unit #	Distance-1 way	HES Unit #	Distance-1 way	HES Unit #	Distance-1 way
10296152C	120 mile	10897797	120 mile	11021972	120 mile	11027039	120 mile
11259882	120 mile						

Job Hours

Date	On Location Hours	Operating Hours	Date	On Location Hours	Operating Hours	Date	On Location Hours	Operating Hours
08/18/10	2	0		08/19/10	2	2		
TOTAL	Total is the sum of each column separately							

Job

Formation Name					Job Times			
Formation Depth (MD)	Top		Bottom		Called Out	Date	Time	Time Zone
Form Type		BHST			On Location			
Job depth MD	835. ft	Job Depth TVD	813.9 ft		Job Started	19 - Aug - 2010	01:20	MST
Water Depth		Wk Ht Above Floor	. ft		Job Completed	19 - Aug - 2010	01:58	MST
Perforation Depth (MD)	From		To		Departed Loc			

Well Data

Description	New / Used	Max pressure psig	Size in	ID in	Weight lbm/ft	Thread	Grade	Top MD ft	Bottom MD ft	Top TVD ft	Bottom TVD ft
-------------	------------	-------------------	---------	-------	---------------	--------	-------	-----------	--------------	------------	---------------

Sales/Rental/3rd Party (HES)

Description	Qty	Qty uom	Depth	Supplier
PLUG,CMTG,TOP,9 5/8,HWE,8.16 MIN/9.06 MA	1	EA		
R/A DENSOMETER W/CHART RECORDER,/JOB,ZI	1	JOB		
ADC (AUTO DENSITY CTRL) SYS, /JOB,ZI	1	JOB		

Tools and Accessories

Type	Size	Qty	Make	Depth	Type	Size	Qty	Make	Depth	Type	Size	Qty	Make
Guide Shoe					Packer					Top Plug	9 5/8	1	
Float Shoe					Bridge Plug					Bottom Plug			
Float Collar					Retainer					SSR plug set			
Insert Float										Plug Container	9 5/8	1	
Stage Tool										Centralizers			

Miscellaneous Materials

Gelling Agt	Conc	Surfactant	Conc	Acid Type	Qty	Conc	%
Treatment Fld	Conc	Inhibitor	Conc	Sand Type	Size	Qty	

Fluid Data

Stage/Plug #: 1									
Fluid #	Stage Type	Fluid Name	Qty	Qty uom	Mixing Density lbm/gal	Yield ft ³ /sk	Mix Fluid Gal/sk	Rate bbl/min	Total Mix Fluid Gal/sk

1	WATER SPACER		20.00	bbl	.	.0	.0	6.0	
2	Lead Cement	VERSACEM (TM) SYSTEM (452010)	120.0	sacks	12.3	2.38	13.75	6	
3	Tail Cement	SWIFTCEM (TM) SYSTEM (452990)	120.0	sacks	14.2	1.43	6.88	6	6.88
6.88 Gal		FRESH WATER							
4	DISPLACEMENT			bbl	.	.0	.0	6.0	
Calculated Values		Pressures		Volumes					
Displacement	59.5	Shut In: Instant		Lost Returns	0	Cement Slurry	79	Pad	
Top Of Cement	SURFACE	5 Min		Cement Returns	29	Actual Displacement	59.5	Treatment	
Frac Gradient		15 Min		Spacers	20	Load and Breakdown		Total Job	158.5
Rates									
Circulating		Mixing	6	Displacement	6	Avg. Job			6
Cement Left In Pipe	Amount	44.6 ft	Reason	Shoe Joint					
Frac Ring # 1 @	ID	Frac ring # 2 @	ID	Frac Ring # 3 @	ID	Frac Ring # 4 @	ID		
The Information Stated Herein Is Correct				Customer Representative Signature					

The Road to Excellence Starts with Safety

Sold To #: 343492		Ship To #: 2800893		Quote #:		Sales Order #: 7565567	
Customer: BILL BARRETT CORPORATION E-BILL				Customer Rep: South, Jodi			
Well Name: GGU FED			Well #: 32C-32-691			API/UWI #:	
Field: PICEANCE		City (SAP):		County/Parish: Garfield			State: Colorado
Legal Description:							
Lat: N 0 deg. OR N 0 deg. 0 min. 0 secs.				Long: E 0 deg. OR E 0 deg. 0 min. 0 secs.			
Contractor: PROPETRO			Rig/Platform Name/Num: PRO PETRO				
Job Purpose: Cement Surface Casing						Ticket Amount:	
Well Type: Development Well			Job Type: Cement Surface Casing				
Sales Person: METLI, MARSHALL			Srv Supervisor: SMITH, DUSTIN			MBU ID Emp #: 418015	

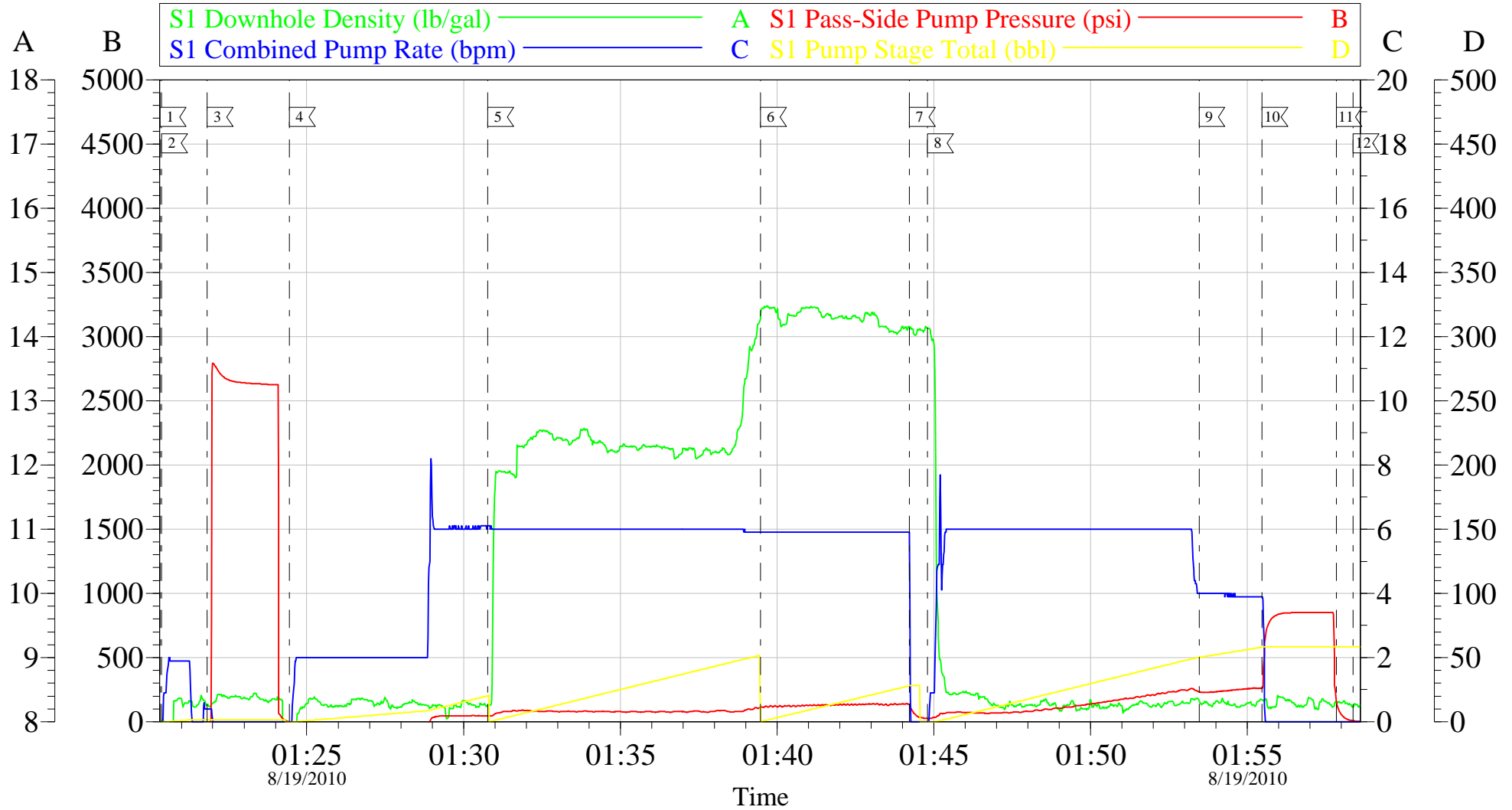
Activity Description	Date/Time	Cht #	Rate bbl/min	Volume bbl		Pressure psig		Comments
				Stage	Total	Tubing	Casing	
Assessment Of Location Safety Meeting	08/19/2010 00:30							ALL HES EMPLOYEES
Pre-Rig Up Safety Meeting	08/19/2010 00:40							ALL HES EMPLOYEES
Rig-Up Equipment	08/19/2010 01:00							RIG UP COMPLETED AT END OF LAST JOB CREW STAYED ON LOCATION
Pre-Job Safety Meeting	08/19/2010 01:20							ALL HES EMPLOYEES AND RIG CREW
Rig-Up Completed	08/19/2010 01:20							TD:835 TP: 813.9 SJ: 44.60 9 5/8 36# CSG 12 3/8 OH
Start Job	08/19/2010 01:20							JOB PUMPED OFFLINE, HOLE DRILLED WITH AIR, NO FLUID IN WELLBORE AT TIME OF CEMENT PIPE STATIC AT TIME OF CEMENT JOB NO QUICK LATCH USED ON CEMENT HEAD
Test Lines	08/19/2010 01:20					2600.0		PRESSURE TEST OK
Pump Spacer	08/19/2010 01:24		6	20	20		60.0	FRESH WATER
Pump Lead Cement	08/19/2010 01:30		6	50.9	50.9		98.0	120 SKS 12.3 PPG 2.38 YIELD 13.77 GAL/SK
Pump Tail Cement	08/19/2010 01:39		6	30.6	30.6		150.0	120 SKS 14.2 PPG 1.43 YIELD 6.85 GAL/SK
Shutdown	08/19/2010 01:44							
Drop Plug	08/19/2010 01:44							PLUG AWAY NO PROBLEMS
Pump Displacement	08/19/2010 01:44		6	59.5	59.5		245.0	FRESH WATER

Cementing Job Log

Activity Description	Date/Time	Cht #	Rate bbl/min	Volume bbl		Pressure psig		Comments
				Stage	Total	Tubing	Casing	
Slow Rate	08/19/2010 01:53		4	49.5	49.5		280.0	
Bump Plug	08/19/2010 01:55		4	59.5	59.5		865.0	
Check Floats	08/19/2010 01:57							FLOATS HELD
End Job	08/19/2010 01:58							29 BBLS CEMENT TO SURFACE GOT RETURNS 25 BBLS INTO TAIL CEMENT
Pre-Rig Down Safety Meeting	08/19/2010 02:10							ALL HES EMPLOYEES
Rig-Down Completed	08/19/2010 02:30							RIG DOWN AND GET READY FOR NEXT JOB
Comment	08/19/2010 02:30							THANK YOU FOR USING HALLIBURTON DUSTIN SMITH AND CREW

BILLBARRETT

GGU FED 32C-32-691 9 5/8 SURFACE



Customer: BILL BARRETT	Job Date: 19-Aug-2010	Sales Order #: 7565567
Well Description: GGU FED 32C-32-691	Job Type: 9 5/8 SURFACE	ADC Used: YES
Company Rep: JODI SOUTH	Cement Supervisor: DUSTIN SMITH	Elite #: 9 PAUL SALAZAR

OptiCem v6.4.8
19-Aug-10 02:04