

BILL BARRETT CORPORATION E-BILL
DO NOT MAIL-1099 18TH ST,STE 2300W
DENVER, Colorado

GGU FEDERAL 22C-32-691 1

BARRETT/PETRO PLUS

Post Job Summary

Cement Surface Casing

Prepared for:
Date Prepared:
Version: 1

Service Supervisor: SMITH, DUSTIN

Submitted by:

HALLIBURTON

The Road to Excellence Starts with Safety

Sold To #: 343492	Ship To #: UNKNOWN	Quote #:	Sales Order #: 7565561
Customer: BILL BARRETT CORPORATION E-BILL	Customer Rep: South, Jodi		
Well Name: GGU FEDERAL 22C-32-691	Well #: 1	API/UWI #:	
Field:	City (SAP): UNKNOWN	County/Parish: Garfield	State: Colorado
Contractor: BARRETT	Rig/Platform Name/Num: PETRO PLUS		
Job Purpose: Cement Surface Casing			
Well Type: Pseudo-well for shipping locations	Job Type: Cement Surface Casing		
Sales Person: METLI, MARSHALL	Srv Supervisor: SMITH, DUSTIN	MBU ID Emp #: 418015	

Job Personnel

HES Emp Name	Exp Hrs	Emp #	HES Emp Name	Exp Hrs	Emp #	HES Emp Name	Exp Hrs	Emp #
LEIST, JAMES R	3	362787	SALAZAR, PAUL Omar	3	445614	SLAUGHTER, JESSE Dean	3	454315
SMITH, DUSTIN Michael	3	418015						

Equipment

HES Unit #	Distance-1 way	HES Unit #	Distance-1 way	HES Unit #	Distance-1 way	HES Unit #	Distance-1 way
10296152C	120 mile	10867425	120 mile	10897797	120 mile	10897891	120 mile
11259882	120 mile						

Job Hours

Date	On Location Hours	Operating Hours	Date	On Location Hours	Operating Hours	Date	On Location Hours	Operating Hours
08/16/10	23	3						
TOTAL	Total is the sum of each column separately							

Job

Formation Name	Top	Bottom	Called Out	Date	Time	Time Zone
Formation Depth (MD)			On Location			
Form Type		BHST	Job Started	16 - Aug - 2010	22:23	MST
Job depth MD	785. ft	Job Depth TVD	766.9 ft	Job Completed	16 - Aug - 2010	23:00
Water Depth		Wk Ht Above Floor	0. ft	Departed Loc		
Perforation Depth (MD)	From	To				

Well Data

Description	New / Used	Max pressure psig	Size in	ID in	Weight lbm/ft	Thread	Grade	Top MD ft	Bottom MD ft	Top TVD ft	Bottom TVD ft
-------------	------------	-------------------	---------	-------	---------------	--------	-------	-----------	--------------	------------	---------------

Sales/Rental/3rd Party (HES)

Description	Qty	Qty uom	Depth	Supplier
PLUG,CMTG, TOP, 9 5/8, HWE, 8.16 MIN/9.06 MA	1	EA		
R/A DENSOMETER W/CHART RECORDER, /JOB, ZI	1	JOB		
PORT. DATA ACQUIS. W/OPTICEM RT W/HES	1	EA		
ADC (AUTO DENSITY CTRL) SYS, /JOB, ZI	1	JOB		

Tools and Accessories

Type	Size	Qty	Make	Depth	Type	Size	Qty	Make	Depth	Type	Size	Qty	Make
Guide Shoe					Packer					Top Plug	9 5/8	1	
Float Shoe					Bridge Plug					Bottom Plug			
Float Collar					Retainer					SSR plug set			
Insert Float										Plug Container	9 5/9	1	
Stage Tool										Centralizers			

Miscellaneous Materials

Gelling Agt	Conc	Surfactant	Conc	Acid Type	Qty	Conc	%
Treatment Fld	Conc	Inhibitor	Conc	Sand Type	Size	Qty	

Fluid Data

Stage/Plug #: 1

Fluid #	Stage Type	Fluid Name	Qty	Qty uom	Mixing Density lbm/gal	Yield ft ³ /sk	Mix Fluid Gal/sk	Rate bbl/min	Total Mix Fluid Gal/sk
1	WATER SPACER		20.00	bbl	.	.0	.0	6.0	
2	Lead Cement	VERSACEM (TM) SYSTEM (452010)	120.0	sacks	12.3	2.38	13.75	6.0	
3	Tail Cement	SWIFTCEM (TM) SYSTEM (452990)	120.0	sacks	14.2	1.43	6.88	6.0	6.88
6.88 Gal		FRESH WATER							
4	DISPLACEMENT		55.9	bbl	.	.0	.0	6.0	
Calculated Values		Pressures		Volumes					
Displacement	55.9	Shut In: Instant		Lost Returns	0	Cement Slurry	81.5	Pad	
Top Of Cement	SURFACE	5 Min		Cement Returns	30	Actual Displacement	55.9	Treatment	
Frac Gradient		15 Min		Spacers	20	Load and Breakdown		Total Job	157.4
Rates									
Circulating		Mixing	6	Displacement	6	Avg. Job			6
Cement Left In Pipe	Amount	43.5 ft	Reason	Shoe Joint					
Frac Ring # 1 @	ID	Frac ring # 2 @	ID	Frac Ring # 3 @	ID	Frac Ring # 4 @	ID		
The Information Stated Herein Is Correct				Customer Representative Signature					

The Road to Excellence Starts with Safety

Sold To #: 343492		Ship To #: UNKNOWN		Quote #:		Sales Order #: 7565561	
Customer: BILL BARRETT CORPORATION E-BILL				Customer Rep: South, Jodi			
Well Name: GGU FEDERAL 22C-32-691			Well #: 1		API/UWI #:		
Field:		City (SAP): UNKNOWN		County/Parish: Garfield		State: Colorado	
Legal Description:							
Lat:				Long:			
Contractor: BARRETT			Rig/Platform Name/Num: PETRO PLUS				
Job Purpose: Cement Surface Casing					Ticket Amount:		
Well Type: Pseudo-well for shipping locations			Job Type: Cement Surface Casing				
Sales Person: METLI, MARSHALL			Srvc Supervisor: SMITH, DUSTIN			MBU ID Emp #: 418015	

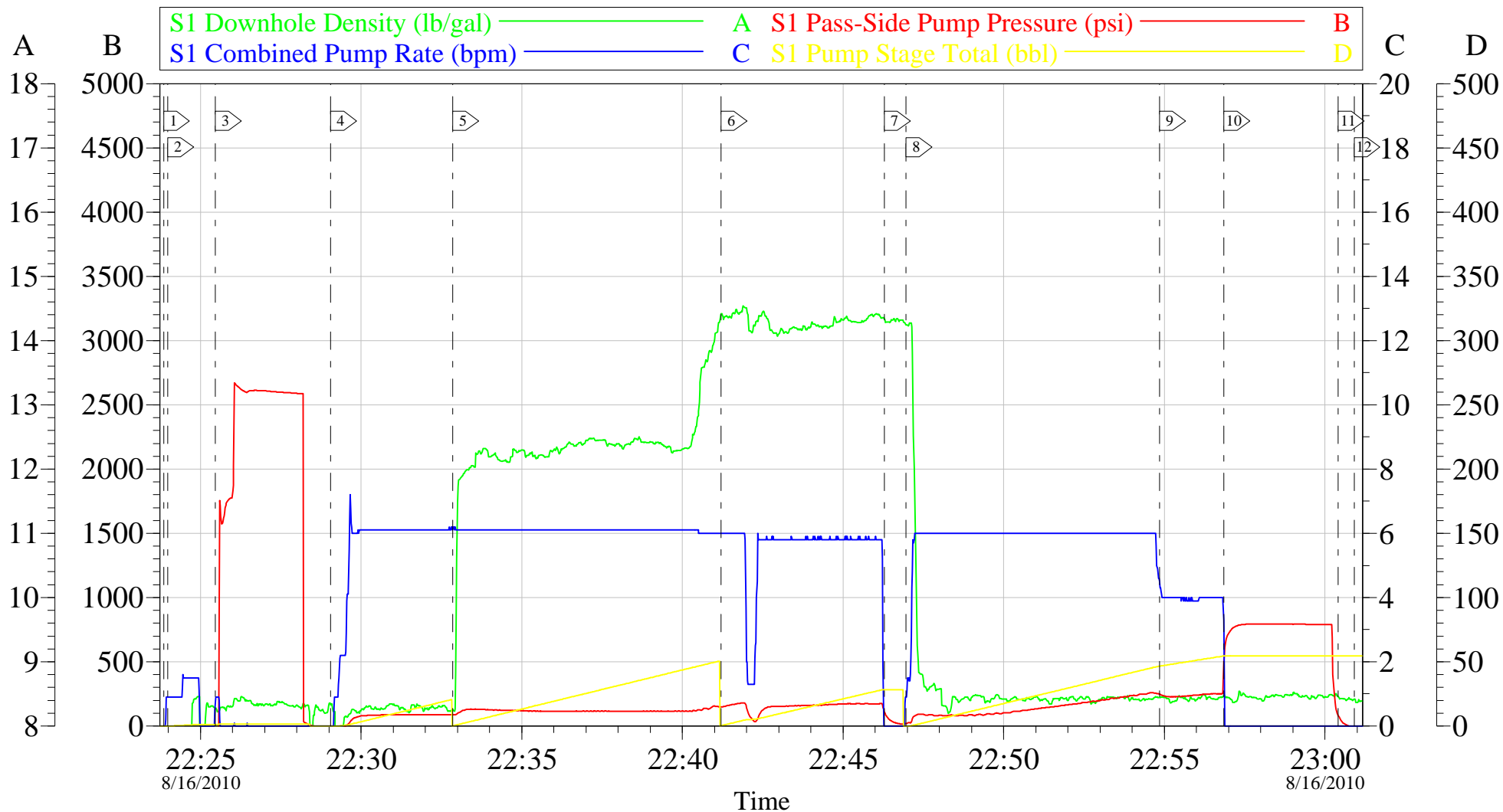
Activity Description	Date/Time	Cht #	Rate bbl/min	Volume bbl		Pressure psig		Comments
				Stage	Total	Tubing	Casing	
Assessment Of Location Safety Meeting	08/16/2010 21:00							ALL HES EMPLOYEES
Pre-Rig Up Safety Meeting	08/16/2010 21:10							ALL HES EMPLOYEES
Pre-Job Safety Meeting	08/16/2010 22:00							ALL HES EMPLOYEES AND RIG CREW
Rig-Up Equipment	08/16/2010 22:10							RIG UP COMPLETED AT END OF LAST JOB CREW STAYED ON LOCATION
Rig-Up Completed	08/16/2010 22:20							TD: 785 TP:766.85 SJ: 43.50 9 5/8 36 # CSG 12 3/8 OH
Start Job	08/16/2010 22:23							JOB PUMPED OFFLINE, HOLE DRILLED WITH AIR, NO FLUID IN WELLBORE AT TIME OF CEMENT PIPE STATIC AT TIME OF CEMENT JOB NO QUICK LATCH USED ON CEMENT HEAD
Test Lines	08/16/2010 22:25					2627.0		PRESSURE TEST OK
Pump Spacer	08/16/2010 22:29		6	20	20		100.0	FRESH WATER
Pump Lead Cement	08/16/2010 22:32		6	50.9	50.9		130.0	120 SKS 12.3 PPG 2.38 YIELD 13.77 GAL/SK
Pump Tail Cement	08/16/2010 22:41		6	30.6	30.6		185.0	120 SKS 14.2 PPG 1.43 YIELD 6.85 GAL/SK
Shutdown	08/16/2010 22:46							
Drop Plug	08/16/2010 22:46							PLUG AWAY NO PROBLEMS
Pump Displacement	08/16/2010 22:46		6	55.9	55.9		241.0	FRESH WATER

Sold To # : 343492 Ship To # : UNKNOWN Quote # : Sales Order # : 7565561

Activity Description	Date/Time	Cht #	Rate bbl/min	Volume bbl		Pressure psig		Comments
				Stage	Total	Tubing	Casing	
Slow Rate	08/16/2010 22:54		4	45.9	45.9		255.0	
Bump Plug	08/16/2010 22:56		4	55.9	55.9		800.0	
Check Floats	08/16/2010 23:00							FLOATS HELD
End Job	08/16/2010 23:00							30 BBLS CEMENT TO SURFACE GOT RETURNS 25 BBLS INTO TAIL CEMENT
Pre-Rig Down Safety Meeting	08/16/2010 23:10							ALL HES EMPLOYEES
Rig-Down Completed	08/16/2010 23:30							RIG DOWN AND GET READY FOR NEXT JOB
Comment	08/16/2010 23:30							THANK YOU FOR USING HALLIBURTON DUSTIN SMITH AND CREW

BILL BARRETT

GGU FEDERAL 22C-32-691 9 5/8 SURFACE



Local Event Log			
1	START JOB	22:23:51	2
2	FILL LINES	22:23:59	3
3	TEST LINES	22:25:28	4
4	PUMP SPACER	22:29:03	5
5	PUMP LEAD CEMENT	22:32:51	6
6	PUMP TAIL CEMENT	22:41:12	7
7	SHUTDOWN/ DROP PLUG	22:46:17	8
8	PUMP DISPLACEMENT	22:46:58	9
9	SLOW RATE	22:54:51	10
10	BUMP PLUG	22:56:51	11
11	CHECK FLOATS	23:00:25	12
12	END JOB	23:00:54	

Customer:	BILL BARRETT	Job Date:	16-Aug-2010	Sales Order #:	7565561
Well Description:	GGU FEDERAL 22C-32-691	Job Type:	9 5/8 SURFACE	ADC Used:	YES
Company Rep:	JODI SOUTH	Cement Supervisor:	DUSTIN SMITH	Elite #:	9 JAMES LEIST