
BILL BARRETT CORPORATION E-BILL

**GGU BARGE 22B-32-691
MAMM CREEK
Garfield County , Colorado**

Cement Surface Casing
16-Aug-2010

Post Job Summary

The Road to Excellence Starts with Safety

Sold To #: 343492		Ship To #: 2800853		Quote #:		Sales Order #: 7565560	
Customer: BILL BARRETT CORPORATION E-BILL				Customer Rep: South, Jodi			
Well Name: GGU BARGE			Well #: 22B-32-691		API/UWI #: 05-045-19454		
Field:		City (SAP): UNKNOWN		County/Parish: Garfield		State: Colorado	
Lat: N 39.486 deg. OR N 39 deg. 29 min. 9.546 secs.				Long: W 107.58 deg. OR W -108 deg. 25 min. 12.518 secs.			
Contractor: BARRETT			Rig/Platform Name/Num: PETRO PLUS				
Job Purpose: Cement Surface Casing							
Well Type: Development Well				Job Type: Cement Surface Casing			
Sales Person: METLI, MARSHALL			Srvc Supervisor: LEIST, JAMES			MBU ID Emp #: 362787	
Job Personnel							
HES Emp Name	Exp Hrs	Emp #	HES Emp Name	Exp Hrs	Emp #	HES Emp Name	Exp Hrs
LEIST, JAMES R	2	362787	SALAZAR, PAUL Omar	2	445614	SLAUGHTER, JESSE Dean	2
							454315
Equipment							
HES Unit #	Distance-1 way	HES Unit #	Distance-1 way	HES Unit #	Distance-1 way	HES Unit #	Distance-1 way
10296152C	120 mile	10867425	120 mile	10897797	120 mile	10897891	120 mile
11259882	120 mile						
Job Hours							
Date	On Location Hours	Operating Hours	Date	On Location Hours	Operating Hours	Date	On Location Hours
8-16-10	3	2					
TOTAL		<i>Total is the sum of each column separately</i>					
Job				Job Times			
Formation Name					Date	Time	Time Zone
Formation Depth (MD)	Top	Bottom		Called Out	16 - Aug - 2010	00:00	MST
Form Type	BHST			On Location	16 - Aug - 2010	05:30	MST
Job depth MD	769. ft	Job Depth TVD	769. ft	Job Started	16 - Aug - 2010	06:49	MST
Water Depth	Wk Ht Above Floor			Job Completed	16 - Aug - 2010	07:26	MST
Perforation Depth (MD)	From	To		Departed Loc	16 - Aug - 2010	08:00	MST
Well Data							
Description	New / Used	Max pressure psig	Size in	ID in	Weight lbm/ft	Thread	Grade
							Top MD ft
							Bottom MD ft
							Top TVD ft
							Bottom TVD ft
Sales/Rental/3rd Party (HES)							
Description					Qty	Qty uom	Depth
PLUG,CMTG,TOP,9 5/8,HWE,8.16 MIN/9.06 MA					1	EA	
R/A DENSOMETER W/CHART RECORDER,/JOB,ZI					1	JOB	
ADC (AUTO DENSITY CTRL) SYS, /JOB,ZI					1	JOB	
Tools and Accessories							
Type	Size	Qty	Make	Depth	Type	Size	Qty
Guide Shoe					Packer		
Float Shoe					Bridge Plug		
Float Collar					Retainer		
Insert Float							
Stage Tool							
Miscellaneous Materials							
Gelling Agt		Conc		Surfactant		Conc	
Treatment Fld		Conc		Inhibitor		Conc	
						Acid Type	
						Sand Type	
						Qty	
						Conc	%
						Size	
						Qty	

Fluid Data									
Stage/Plug #: 1									
Fluid #	Stage Type	Fluid Name	Qty	Qty uom	Mixing Density lbm/gal	Yield ft ³ /sk	Mix Fluid Gal/sk	Rate bbl/min	Total Mix Fluid Gal/sk
1	WATER SPACER		10.00	bbl	.	.0	.0	.0	
2	Lead Cement	VERSACEM (TM) SYSTEM (452010)	120.0	sacks	12.3	2.38	13.75		
3	Tail Cement	SWIFTCES (TM) SYSTEM (452990)	120.0	sacks	14.2	1.43	6.88		6.88
6.88 Gal		FRESH WATER							
4	DISPLACEMENT		56	bbl	8.33	.0	.0	.0	
Calculated Values		Pressures		Volumes					
Displacement	56	Shut In: Instant		Lost Returns		Cement Slurry	81	Pad	
Top Of Cement	SURFACE	5 Min		Cement Returns	26	Actual Displacement	56	Treatment	
Frac Gradient		15 Min		Spacers	10	Load and Breakdown		Total Job	
Rates									
Circulating		Mixing	6	Displacement	6	Avg. Job	6		
Cement Left In Pipe	Amount	44.05 ft	Reason	Shoe Joint					
Frac Ring # 1 @	ID	Frac ring # 2 @	ID	Frac Ring # 3 @	ID	Frac Ring # 4 @	ID		
The Information Stated Herein Is Correct				Customer Representative Signature					

The Road to Excellence Starts with Safety

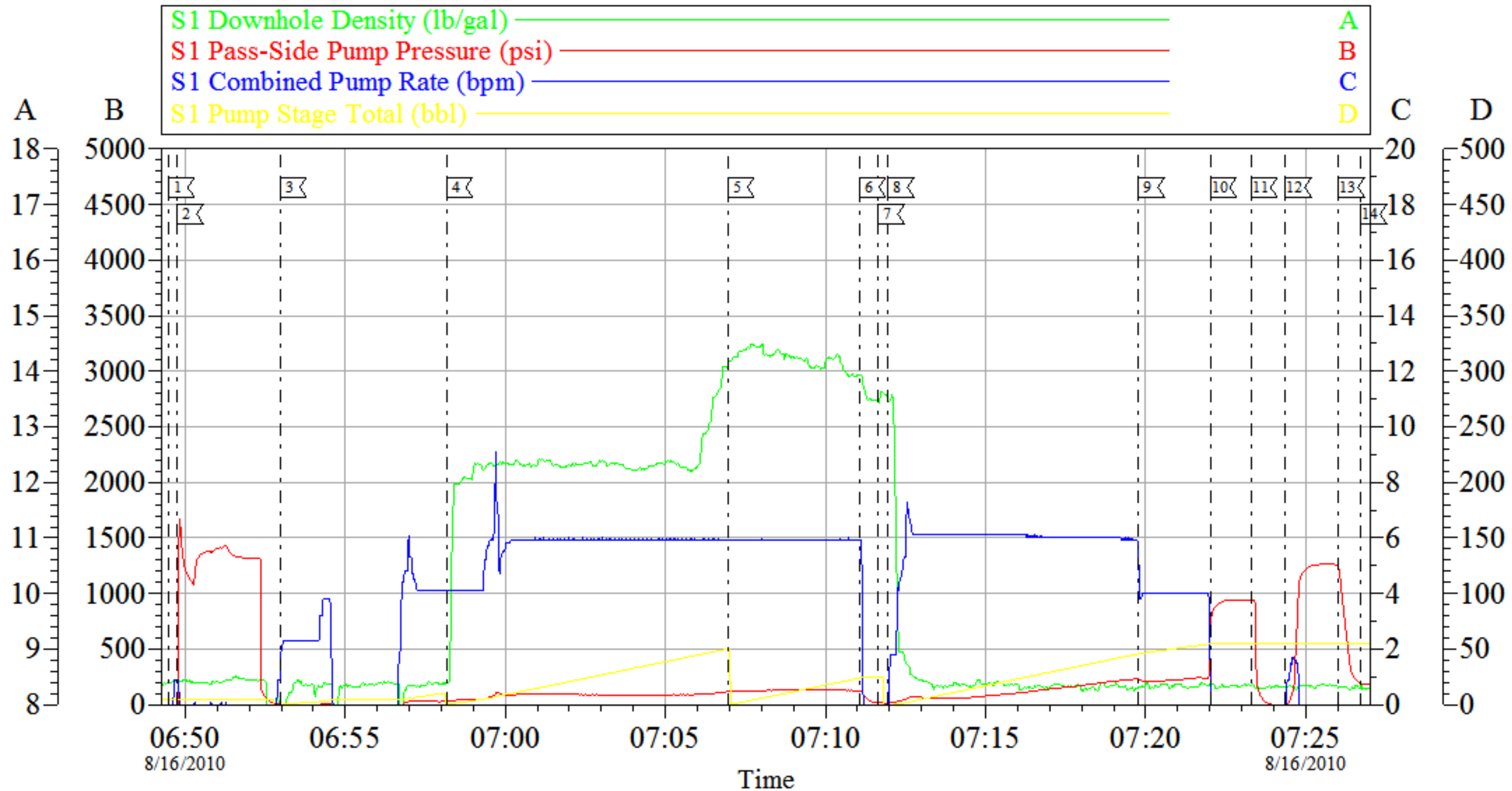
Sold To #: 343492	Ship To #: 2800853	Quote #:	Sales Order #: 7565560
Customer: BILL BARRETT CORPORATION E-BILL		Customer Rep: South, Jodi	
Well Name: GGU BARGE		Well #: 22B-32-691	API/UWI #: 05-045-19454
Field:	City (SAP): UNKNOWN	County/Parish: Garfield	State: Colorado
Legal Description:			
Lat: N 39.486 deg. OR N 39 deg. 29 min. 9.546 secs.		Long: W 107.58 deg. OR W -108 deg. 25 min. 12.518 secs.	
Contractor: BARRETT		Rig/Platform Name/Num: PETRO PLUS	
Job Purpose: Cement Surface Casing			Ticket Amount:
Well Type: Development Well		Job Type: Cement Surface Casing	
Sales Person: METLI, MARSHALL		Srv Supervisor: LEIST, JAMES	MBU ID Emp #: 362787

Activity Description	Date/Time	Cht #	Rate bbl/min	Volume bbl		Pressure psig		Comments
				Stage	Total	Tubing	Casing	
Assessment Of Location Safety Meeting	08/16/2010 05:41							WITH ALL HES PERSONNEL
Pre-Rig Up Safety Meeting	08/16/2010 06:00							WITH ALL HES PERSONNEL
Rig-Up Completed	08/16/2010 06:30							
Pre-Job Safety Meeting	08/16/2010 06:35							WITH ALL ON LOCATION PERSONNEL
Start Job	08/16/2010 06:49							JOB WAS PUMPED OFF LINE, HOLE DRILLED WITH AIR, NO FLUID IN WELLBORE AT TIME OF CEMENT, PIPE STATIC AT TIME OF CEMENT JOB., NO QUICK LATCH USED ON CEMENT HEAD
Pressure Test	08/16/2010 06:49							1480 PSI
Pump Spacer 1	08/16/2010 06:52		6	10			32.0	FRESH WATER
Pump Lead Cement	08/16/2010 06:58		6	50.6			121.0	120 SKS, 12.3 PPG, 2.37 FT3/SK, 13.76 GAL/SK
Pump Tail Cement	08/16/2010 07:06		6	30.5			130.0	120 SKS, 14.2 PPG, 1.43 FT3/SK, 6.88 GAL/SK
Shutdown	08/16/2010 07:11							
Drop Top Plug	08/16/2010 07:11							AWAY
Pump Displacement	08/16/2010 07:11		6	56			300.0	FRESH WATER, 26 BBLS CMT TO SURFACE

Activity Description	Date/Time	Cht #	Rate bbl/ min	Volume bbl		Pressure psig		Comments
				Stage	Total	Tubing	Casing	
Slow Rate	08/16/2010 07:19		4	46			220.0	TO BUMP PLUG
Bump Plug	08/16/2010 07:22		4	56			320.0	PLUG BUMPED
Check Floats	08/16/2010 07:23						880.0	THE FLOATS DID NOT HOLD SHUT IN AT HEAD WITH 250 PSI
End Job	08/16/2010 07:26							
Pre-Rig Down Safety Meeting	08/16/2010 07:45							WITH ALL HES PERSONNEL
Rig-Down Completed	08/16/2010 08:00							RIG DOWN AND SET UP FOR NEXT JOB
Comment	08/16/2010 08:00							THANKYOU FOR USING HALLIBURTON CEMENT, JAMES LEIST AND CREW

BILL BARRETT

9 5/8 SURFACE CASING



Customer: BILL BARRETT
 Well Description: GGU BARGE 22A-32-691
 Company Rep: JODI SOUTH

Job Date: 16-Aug-2010
 Job Type: SURFACE
 Cement Supervisor: JAMES LEIST

Sales Order #: 7565560
 ADC Used: YES
 Elite #:9 PAUL SALAZAR

HALLIBURTON
 OptiCem v6.3.4
 16-Aug-10 07:36