

---

# **BILL BARRETT CORPORATION E-BILL**

---

**GGU BARGE FED 32A-32-691  
MAMM CREEK  
Garfield County , Colorado**

**Cement Surface Casing**  
**14-Aug-2010**

**Post Job Summary**

## The Road to Excellence Starts with Safety

<b>Sold To #:</b> 343492		<b>Ship To #:</b> 2800800		<b>Quote #:</b>		<b>Sales Order #:</b> 7565554	
<b>Customer:</b> BILL BARRETT CORPORATION E-BILL				<b>Customer Rep:</b> South, Jodi			
<b>Well Name:</b> GGU BARGE FED			<b>Well #:</b> 32A-32-691			<b>API/UWI #:</b> 05-045-19450	
<b>Field:</b> MAMM CREEK		<b>City (SAP):</b> UNKNOWN		<b>County/Parish:</b> Garfield		<b>State:</b> Colorado	
<b>Lat:</b> N 39.486 deg. OR N 39 deg. 29 min. 9.42 secs.				<b>Long:</b> W 107.58 deg. OR W -108 deg. 25 min. 12.889 secs.			
<b>Contractor:</b> PROPETRO			<b>Rig/Platform Name/Num:</b> PRO PETRO				
<b>Job Purpose:</b> Cement Surface Casing							
<b>Well Type:</b> Development Well			<b>Job Type:</b> Cement Surface Casing				
<b>Sales Person:</b> METLI, MARSHALL			<b>Srv Supervisor:</b> LEIST, JAMES			<b>MBU ID Emp #:</b> 362787	

### Job Personnel

HES Emp Name	Exp Hrs	Emp #	HES Emp Name	Exp Hrs	Emp #	HES Emp Name	Exp Hrs	Emp #
DANIEL, EVERETT Dean	2	337325	HOEFER, FREEMAN Dennis	2	369666	LEIST, JAMES R	2	362787
SALAZAR, PAUL Omar	2	445614						

### Equipment

HES Unit #	Distance-1 way	HES Unit #	Distance-1 way	HES Unit #	Distance-1 way	HES Unit #	Distance-1 way
10001431	mile	10296152C	mile	10724643	mile	10897797	mile
11259882	mile						

### Job Hours

Date	On Location Hours	Operating Hours	Date	On Location Hours	Operating Hours	Date	On Location Hours	Operating Hours
8-14-10	5	2						

<b>TOTAL</b>	Total is the sum of each column separately							
--------------	--	--	--	--	--	--	--	--

### Job

Formation Name	Top	Bottom	Called Out	Date	Time	Time Zone
Formation Depth (MD)			On Location	14 - Aug - 2010	01:00	MST
Form Type		BHST	Job Started	14 - Aug - 2010	05:00	MST
Job depth MD	817. ft	Job Depth TVD	Job Completed	14 - Aug - 2010	09:10	MST
Water Depth		Wk Ht Above Floor	Departed Loc	14 - Aug - 2010	09:47	MST
Perforation Depth (MD)	From	To		14 - Aug - 2010	10:30	MST

### Well Data

Description	New / Used	Max pressure psig	Size in	ID in	Weight lbm/ft	Thread	Grade	Top MD ft	Bottom MD ft	Top TVD ft	Bottom TVD ft
-------------	------------	-------------------	---------	-------	---------------	--------	-------	-----------	--------------	------------	---------------

### Sales/Rental/3<sup>rd</sup> Party (HES)

Description	Qty	Qty uom	Depth	Supplier
PLUG,CMTG,TOP,9 5/8,HWE,8.16 MIN/9.06 MA	1	EA		

### Tools and Accessories

Type	Size	Qty	Make	Depth	Type	Size	Qty	Make	Depth	Type	Size	Qty	Make
Guide Shoe					Packer					Top Plug	9.625	1	
Float Shoe					Bridge Plug					Bottom Plug			
Float Collar					Retainer					SSR plug set			
Insert Float										Plug Container	9.625	1	
Stage Tool										Centralizers			

### Miscellaneous Materials

Gelling Agt	Conc	Surfactant	Conc	Acid Type	Qty	Conc	%
Treatment Fld	Conc	Inhibitor	Conc	Sand Type	Size		Qty

Fluid Data									
Stage/Plug #: 1									
Fluid #	Stage Type	Fluid Name	Qty	Qty uom	Mixing Density lbm/gal	Yield ft <sup>3</sup> /sk	Mix Fluid Gal/sk	Rate bbl/min	Total Mix Fluid Gal/sk
1	WATER SPACER		10.00	bbl	.	.0	.0	.0	
2	Lead Cement	VERSACEM (TM) SYSTEM (452010)	120.0	sacks	12.3	2.38	13.75		
3	Tail Cement	SWIFTCEM (TM) SYSTEM (452990)	120.0	sacks	14.2	1.43	6.88		6.88
6.88 Gal		FRESH WATER							
4	DISPLACEMENT		59.00	bbl	.	.0	.0	.0	
Calculated Values		Pressures		Volumes					
Displacement	59	Shut In: Instant		Lost Returns		Cement Slurry	81.1	Pad	
Top Of Cement	SURFACE	5 Min		Cement Returns	29	Actual Displacement	59	Treatment	
Frac Gradient		15 Min		Spacers	10	Load and Breakdown		Total Job	
Rates									
Circulating		Mixing	6	Displacement	6	Avg. Job	6		
Cement Left In Pipe	Amount	43.9 ft	Reason	Shoe Joint					
Frac Ring # 1 @	ID	Frac ring # 2 @	ID	Frac Ring # 3 @	ID	Frac Ring # 4 @	ID		
The Information Stated Herein Is Correct				Customer Representative Signature					

*The Road to Excellence Starts with Safety*

<b>Sold To #:</b> 343492	<b>Ship To #:</b> 2800800	<b>Quote #:</b>	<b>Sales Order #:</b> 7565554
<b>Customer:</b> BILL BARRETT CORPORATION E-BILL		<b>Customer Rep:</b> South, Jodi	
<b>Well Name:</b> GGU BARGE FED		<b>Well #:</b> 32A-32-691	<b>API/UWI #:</b> 05-045-19450
<b>Field:</b> MAMM CREEK	<b>City (SAP):</b> UNKNOWN	<b>County/Parish:</b> Garfield	<b>State:</b> Colorado
<b>Legal Description:</b>			
<b>Lat:</b> N 39.486 deg. OR N 39 deg. 29 min. 9.42 secs.		<b>Long:</b> W 107.58 deg. OR W -108 deg. 25 min. 12.889 secs.	
<b>Contractor:</b> PROPETRO		<b>Rig/Platform Name/Num:</b> PRO PETRO	
<b>Job Purpose:</b> Cement Surface Casing			<b>Ticket Amount:</b>
<b>Well Type:</b> Development Well		<b>Job Type:</b> Cement Surface Casing	
<b>Sales Person:</b> METLI, MARSHALL		<b>Srv Supervisor:</b> LEIST, JAMES	<b>MBU ID Emp #:</b> 362787

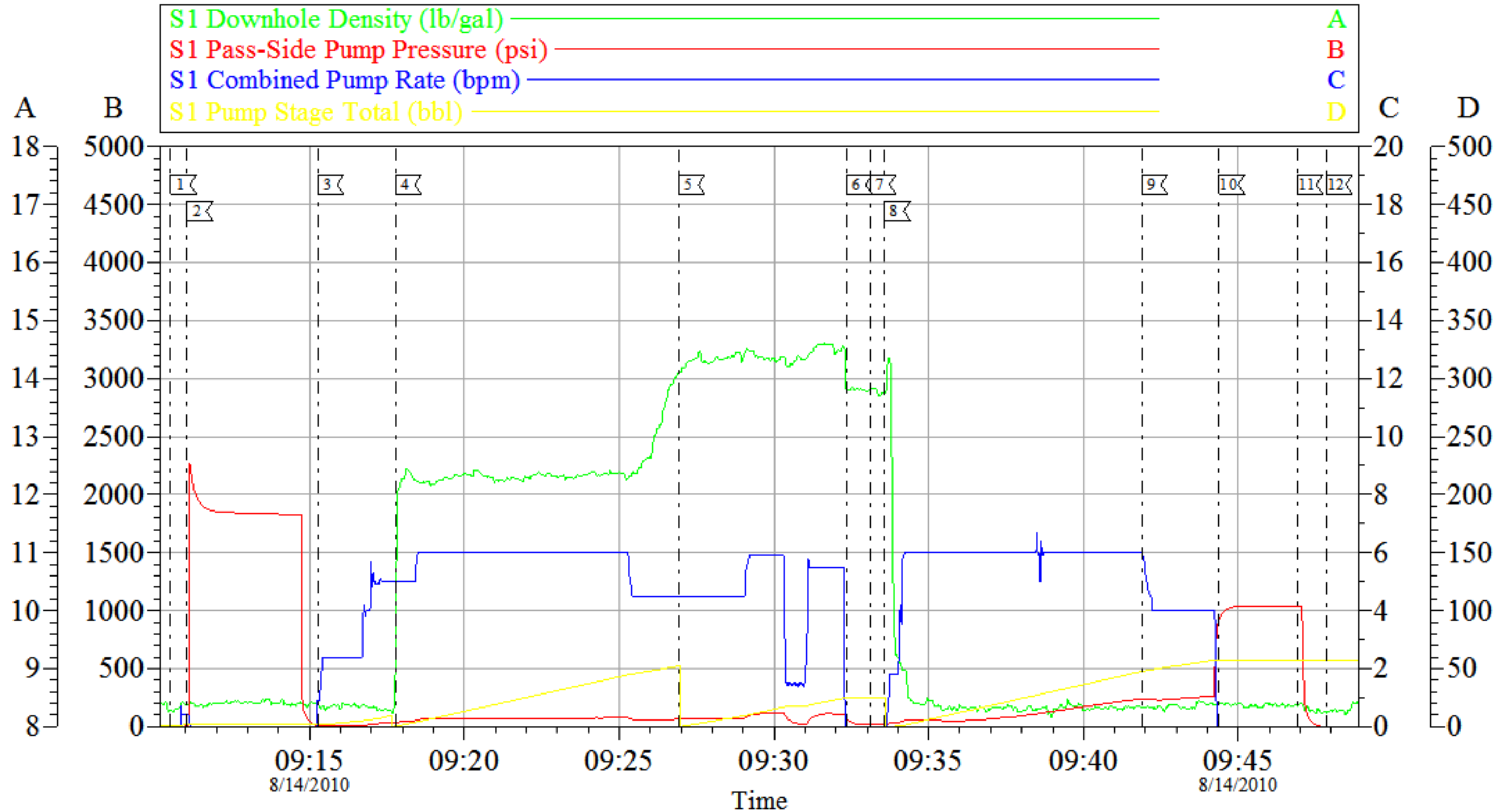
Activity Description	Date/Time	Cht #	Rate bbl/min	Volume bbl		Pressure psig		Comments
				Stage	Total	Tubing	Casing	
Assessment Of Location Safety Meeting	08/14/2010 05:30							WITH ALL HES PERSONNEL
Pre-Rig Up Safety Meeting	08/14/2010 08:00							WITH ALL HES PERSONNEL
Rig-Up Completed	08/14/2010 08:45							TP-817.1 36#, TD-840, S.J.-43.9, HOLE-12 3/8
Pre-Job Safety Meeting	08/14/2010 08:50							WITH ALL ON LOCATION PERSONNEL
Start Job	08/14/2010 09:10							JOB WAS PUMPED OFF LINE, HOLE DRILLED WITH AIR, NO FLUID IN WELLBORE AT TIME OF CEMENT, PIPE STATIC AT TIME OF CEMENT JOB., NO QUICK LATCH USED ON CEMENT HEAD
Pressure Test	08/14/2010 09:11							1830 PSI
Pump Spacer 1	08/14/2010 09:15		6	10			15.0	FRESH WATER
Pump Lead Cement	08/14/2010 09:17		6	50.6			76.0	120 SKS, 12.3 PPG, 2.37 FT3/SK, 13.76 GAL/SK
Pump Tail Cement	08/14/2010 09:26		6	30.5			76.0	120 SKS, 14.2 PPG, 1.43 FT3/SK, 6.88 GAL/SK
Shutdown	08/14/2010 09:32							
Drop Top Plug	08/14/2010 09:33							AWAY

## Cementing Job Log

Activity Description	Date/Time	Cht #	Rate bbl/ min	Volume bbl		Pressure psig		Comments
				Stage	Total	Tubing	Casing	
Pump Displacement	08/14/2010 09:33		6	59.7			250.0	FRESH WATER, GOT RETURNS AT 20 GONE IN DISPLACEMENT, 29 BBLs CMT TO SURFACE
Slow Rate	08/14/2010 09:41		4	49			240.0	TO BUMP PLUG
Bump Plug	08/14/2010 09:44		4	59.7			267.0	PLUG BUMPED
Check Floats	08/14/2010 09:46						1000. 0	THE FLOATS ARE HOLDING
End Job	08/14/2010 09:47							
Pre-Rig Down Safety Meeting	08/14/2010 10:00							WITH ALL HES PERSONNEL
Rig-Down Completed	08/14/2010 10:37							RIG DOWN AND SET UP FOR NEXT JOB
Comment	08/14/2010 10:37							THANKYOU FOR USING HALLIBURTON CEMENT, JAMES LEIST AND CREW

# BILL BARRETT

## 9 5/8 SURFACE CASING



Local Event Log					
1	START JOB	09:10:31	2	PRESSURE TEST	09:11:03
3	PUMP H2O SPACER	09:15:16	4	PUMP LEAD CMT	09:17:46
5	PUMP TAIL CMT	09:26:56	6	SHUTDOWN	09:32:20
7	DROP TOP PLUG	09:33:06	8	PUMP DISPLACEMENT	09:33:34
9	SLOW RATE	09:41:52	10	BUMP PLUG	09:44:22
11	CHECK FLOATS	09:46:53	12	END JOB	09:47:51

Customer: BILL BARRETT  
 Well Description: GGU BARGE 32A-32-691  
 Company Rep: JODI SOUTH

Job Date: 14-Aug-2010  
 Job Type: SURFACE  
 Cement Supervisor: JAMES LEIST

Sales Order #: 7565554  
 ADC Used: YES  
 Elite #9: DENNIS HOEFER

HALLIBURTON  
 OptiCem v6.3.4  
 14-Aug-10 09:55