

ENSIGN

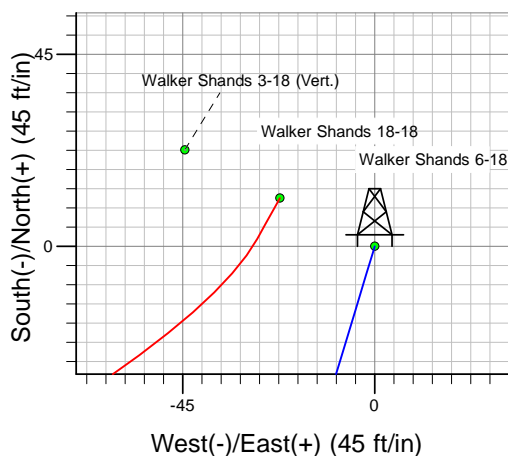
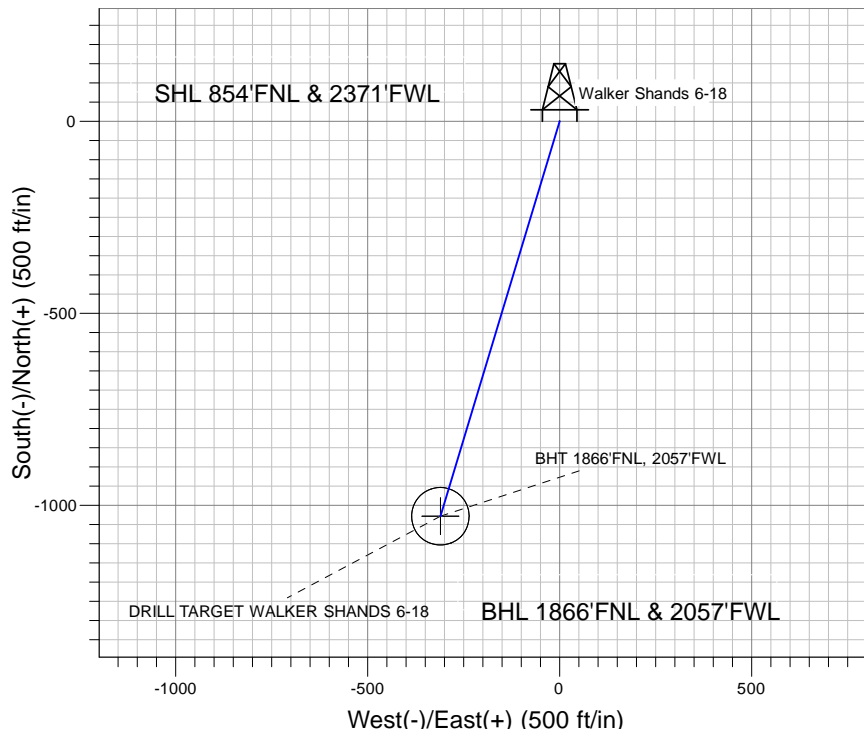
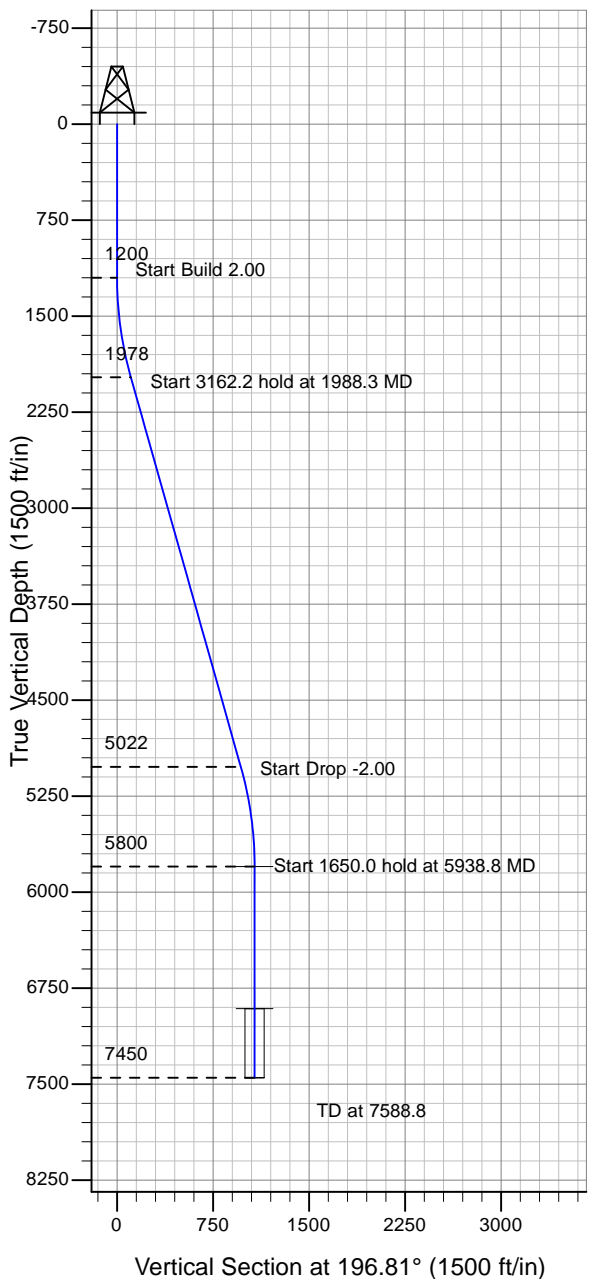
Directional

Well Name: Walker Shands 6-18

Surface Location: Walker Shands 18-18 Pad Sec.18-T6N-R66W
 North American Datum 1983 , US State Plane 1983 , Colorado Northern Zone
 Ground Elevation: 4850.0

+N/-S+E/-W Northing Easting Latitude Longitude Slot
 0.0 0.01422883.01 3188058.66 40° 29' 32.089 N 104° 49' 25.835 W
 Original Well Elev WELL @ 4860.0ft (Original Well Elev)

BAYSWATER EXPLORATION & PRODUCTION



Walker Shands 18-18 Pad Sec.18-T6N-R66W
 Walker Shands 6-18
 Plan#1 (7-28-10)
 13:46, August 09 2010



Azimuths to True North
 Magnetic North: 9.02°

Magnetic Field
 Strength: 53262.8snT
 Dip Angle: 67.14°
 Date: 8/9/2010
 Model: IGRF2010

WELLBORE TARGET DETAILS (LAT/LONG)

Name	TVD	+N/-S	+E/-W	Latitude	Longitude	Shape
DRILL TARGET WALKER SHANDS 6-18	5800.0	-1028.8	-310.8	40° 29' 21.923 N	104° 49' 29.857 W	Point
BHT 1866'FNL, 2057'FWL	6910.0	-1028.8	-310.8	40° 29' 21.923 N	104° 49' 29.857 W	Circle (Radius: 75.0)

SECTION DETAILS

Sec	MD	Inc	Azi	TVD	+N/-S	+E/-W	DLeg	TFace	VSec	Target
1	0.0	0.00	0.00	0.0	0.0	0.0	0.00	0.00	0.0	
2	1200.0	0.00	0.00	1200.0	0.0	0.0	0.00	0.00	0.0	
3	1988.3	15.77	196.81	1978.4	-103.2	-31.2	2.00	196.81	107.8	
4	5150.5	15.77	196.81	5021.6	-925.6	-279.6	0.00	0.00	967.0	
5	5938.8	0.00	0.00	5800.0	-1028.8	-310.8	2.00	180.00	1074.7	DRILL TARGET WALKER SHANDS 6-18
6	7588.8	0.00	0.00	7450.0	-1028.8	-310.8	0.00	0.00	1074.7	



BAYSWATER EXPLORATION & PRODUCTION

SEC.18-T6N-R66W

Walker Shands 18-18 Pad Sec.18-T6N-R66W

Walker Shands 6-18

Wellbore #1

Plan: Plan#1 (7-28-10)

Standard Planning Report

09 August, 2010

Database:	EDM den0-adp01 Server Data	Local Co-ordinate Reference:	Well Walker Shands 6-18
Company:	BAYSWATER EXPLORATION & PRODUCTION	TVD Reference:	WELL @ 4860.0ft (Original Well Elev)
Project:	SEC.18-T6N-R66W	MD Reference:	WELL @ 4860.0ft (Original Well Elev)
Site:	Walker Shands 18-18 Pad Sec.18-T6N-R66W	North Reference:	True
Well:	Walker Shands 6-18	Survey Calculation Method:	Minimum Curvature
Wellbore:	Wellbore #1		
Design:	Plan#1 (7-28-10)		

Project	SEC.18-T6N-R66W		
Map System:	US State Plane 1983	System Datum:	Mean Sea Level
Geo Datum:	North American Datum 1983		Using Well Reference Point
Map Zone:	Colorado Northern Zone		Using geodetic scale factor

Walker Shands 18-18 Pad Sec.18-T6N-R66W					
Site Position:		Northing:		1,422,894.15 ft	
From:	Lat/Long	Easting:		3,188,036.32 ft	
Position Uncertainty:		0.0 ft		Slot Radius: "	
				Grid Convergence: 0.44 °	

Well	Walker Shands 6-18					
Well Position	+N-S	-11.3 ft	Northing:	1,422,883.01 ft	Latitude:	40° 29' 32.089 N
	+E-W	22.3 ft	Easting:	3,188,058.66 ft	Longitude:	104° 49' 25.835 W
Position Uncertainty		0.0 ft	Wellhead Elevation:	ft	Ground Level:	4,850.0 ft

Wellbore	Wellbore #1				
Magnetics	Model Name	Sample Date	Declination (°)	Dip Angle (°)	Field Strength (nT)
	IGRF2010	8/9/2010	9.02	67.14	53,263

Design	Plan#1 (7-28-10)			
Audit Notes:				
Version:	Phase:	PROTOTYPE	Tie On Depth:	0.0
Vertical Section:	Depth From (TVD) (ft)	+N/-S (ft)	+E/-W (ft)	Direction (°)
	0.0	0.0	0.0	196.81

Plan Sections										
Measured Depth (ft)	Inclination (°)	Azimuth (°)	Vertical Depth (ft)	+N/-S (ft)	+E/-W (ft)	Dogleg Rate (°/100ft)	Build Rate (°/100ft)	Turn Rate (°/100ft)	TFO (°)	Target
0.0	0.00	0.00	0.0	0.0	0.0	0.00	0.00	0.00	0.00	
1,200.0	0.00	0.00	1,200.0	0.0	0.0	0.00	0.00	0.00	0.00	
1,988.3	15.77	196.81	1,978.4	-103.2	-31.2	2.00	2.00	0.00	196.81	
5,150.5	15.77	196.81	5,021.6	-925.6	-279.6	0.00	0.00	0.00	0.00	
5,938.8	0.00	0.00	5,800.0	-1,028.8	-310.8	2.00	-2.00	0.00	180.00	DRILL TARGET W/
7,588.8	0.00	0.00	7,450.0	-1,028.8	-310.8	0.00	0.00	0.00	0.00	

Database:	EDM den0-adp01 Server Data	Local Co-ordinate Reference:	Well Walker Shands 6-18
Company:	BAYSWATER EXPLORATION & PRODUCTION	TVD Reference:	WELL @ 4860.0ft (Original Well Elev)
Project:	SEC.18-T6N-R66W	MD Reference:	WELL @ 4860.0ft (Original Well Elev)
Site:	Walker Shands 18-18 Pad Sec.18-T6N-R66W	North Reference:	True
Well:	Walker Shands 6-18	Survey Calculation Method:	Minimum Curvature
Wellbore:	Wellbore #1		
Design:	Plan#1 (7-28-10)		

Planned Survey									
Measured Depth (ft)	Inclination (°)	Azimuth (°)	Vertical Depth (ft)	+N/-S (ft)	+E/-W (ft)	Vertical Section (ft)	Dogleg Rate (°/100ft)	Build Rate (°/100ft)	Turn Rate (°/100ft)
0.0	0.00	0.00	0.0	0.0	0.0	0.0	0.00	0.00	0.00
40.0	0.00	0.00	40.0	0.0	0.0	0.0	0.00	0.00	0.00
80.0	0.00	0.00	80.0	0.0	0.0	0.0	0.00	0.00	0.00
120.0	0.00	0.00	120.0	0.0	0.0	0.0	0.00	0.00	0.00
160.0	0.00	0.00	160.0	0.0	0.0	0.0	0.00	0.00	0.00
200.0	0.00	0.00	200.0	0.0	0.0	0.0	0.00	0.00	0.00
240.0	0.00	0.00	240.0	0.0	0.0	0.0	0.00	0.00	0.00
280.0	0.00	0.00	280.0	0.0	0.0	0.0	0.00	0.00	0.00
320.0	0.00	0.00	320.0	0.0	0.0	0.0	0.00	0.00	0.00
360.0	0.00	0.00	360.0	0.0	0.0	0.0	0.00	0.00	0.00
400.0	0.00	0.00	400.0	0.0	0.0	0.0	0.00	0.00	0.00
440.0	0.00	0.00	440.0	0.0	0.0	0.0	0.00	0.00	0.00
480.0	0.00	0.00	480.0	0.0	0.0	0.0	0.00	0.00	0.00
520.0	0.00	0.00	520.0	0.0	0.0	0.0	0.00	0.00	0.00
560.0	0.00	0.00	560.0	0.0	0.0	0.0	0.00	0.00	0.00
600.0	0.00	0.00	600.0	0.0	0.0	0.0	0.00	0.00	0.00
640.0	0.00	0.00	640.0	0.0	0.0	0.0	0.00	0.00	0.00
680.0	0.00	0.00	680.0	0.0	0.0	0.0	0.00	0.00	0.00
720.0	0.00	0.00	720.0	0.0	0.0	0.0	0.00	0.00	0.00
760.0	0.00	0.00	760.0	0.0	0.0	0.0	0.00	0.00	0.00
800.0	0.00	0.00	800.0	0.0	0.0	0.0	0.00	0.00	0.00
840.0	0.00	0.00	840.0	0.0	0.0	0.0	0.00	0.00	0.00
880.0	0.00	0.00	880.0	0.0	0.0	0.0	0.00	0.00	0.00
920.0	0.00	0.00	920.0	0.0	0.0	0.0	0.00	0.00	0.00
960.0	0.00	0.00	960.0	0.0	0.0	0.0	0.00	0.00	0.00
1,000.0	0.00	0.00	1,000.0	0.0	0.0	0.0	0.00	0.00	0.00
1,040.0	0.00	0.00	1,040.0	0.0	0.0	0.0	0.00	0.00	0.00
1,080.0	0.00	0.00	1,080.0	0.0	0.0	0.0	0.00	0.00	0.00
1,120.0	0.00	0.00	1,120.0	0.0	0.0	0.0	0.00	0.00	0.00
1,160.0	0.00	0.00	1,160.0	0.0	0.0	0.0	0.00	0.00	0.00
1,200.0	0.00	0.00	1,200.0	0.0	0.0	0.0	0.00	0.00	0.00
1,240.0	0.80	196.81	1,240.0	-0.3	-0.1	0.3	2.00	2.00	0.00
1,280.0	1.60	196.81	1,280.0	-1.1	-0.3	1.1	2.00	2.00	0.00
1,320.0	2.40	196.81	1,320.0	-2.4	-0.7	2.5	2.00	2.00	0.00
1,360.0	3.20	196.81	1,359.9	-4.3	-1.3	4.5	2.00	2.00	0.00
1,400.0	4.00	196.81	1,399.8	-6.7	-2.0	7.0	2.00	2.00	0.00
1,440.0	4.80	196.81	1,439.7	-9.6	-2.9	10.0	2.00	2.00	0.00
1,480.0	5.60	196.81	1,479.6	-13.1	-4.0	13.7	2.00	2.00	0.00
1,520.0	6.40	196.81	1,519.3	-17.1	-5.2	17.9	2.00	2.00	0.00
1,560.0	7.20	196.81	1,559.1	-21.6	-6.5	22.6	2.00	2.00	0.00
1,600.0	8.00	196.81	1,598.7	-26.7	-8.1	27.9	2.00	2.00	0.00
1,640.0	8.80	196.81	1,638.3	-32.3	-9.8	33.7	2.00	2.00	0.00
1,680.0	9.60	196.81	1,677.8	-38.4	-11.6	40.1	2.00	2.00	0.00
1,720.0	10.40	196.81	1,717.1	-45.1	-13.6	47.1	2.00	2.00	0.00
1,760.0	11.20	196.81	1,756.4	-52.2	-15.8	54.6	2.00	2.00	0.00
1,800.0	12.00	196.81	1,795.6	-59.9	-18.1	62.6	2.00	2.00	0.00
1,840.0	12.80	196.81	1,834.7	-68.1	-20.6	71.2	2.00	2.00	0.00
1,880.0	13.60	196.81	1,873.6	-76.9	-23.2	80.3	2.00	2.00	0.00
1,920.0	14.40	196.81	1,912.4	-86.2	-26.0	90.0	2.00	2.00	0.00
1,960.0	15.20	196.81	1,951.1	-95.9	-29.0	100.2	2.00	2.00	0.00
1,988.3	15.77	196.81	1,978.4	-103.2	-31.2	107.8	2.00	2.00	0.00
2,000.0	15.77	196.81	1,989.6	-106.2	-32.1	111.0	0.00	0.00	0.00
2,040.0	15.77	196.81	2,028.1	-116.6	-35.2	121.8	0.00	0.00	0.00

Database:	EDM den0-adp01 Server Data	Local Co-ordinate Reference:	Well Walker Shands 6-18
Company:	BAYSWATER EXPLORATION & PRODUCTION	TVD Reference:	WELL @ 4860.0ft (Original Well Elev)
Project:	SEC.18-T6N-R66W	MD Reference:	WELL @ 4860.0ft (Original Well Elev)
Site:	Walker Shands 18-18 Pad Sec.18-T6N-R66W	North Reference:	True
Well:	Walker Shands 6-18	Survey Calculation Method:	Minimum Curvature
Wellbore:	Wellbore #1		
Design:	Plan#1 (7-28-10)		

Planned Survey									
Measured Depth (ft)	Inclination (°)	Azimuth (°)	Vertical Depth (ft)	+N/-S (ft)	+E/-W (ft)	Vertical Section (ft)	Dogleg Rate (°/100ft)	Build Rate (°/100ft)	Turn Rate (°/100ft)
2,080.0	15.77	196.81	2,066.6	-127.0	-38.4	132.7	0.00	0.00	0.00
2,120.0	15.77	196.81	2,105.1	-137.4	-41.5	143.6	0.00	0.00	0.00
2,160.0	15.77	196.81	2,143.6	-147.8	-44.7	154.4	0.00	0.00	0.00
2,200.0	15.77	196.81	2,182.1	-158.2	-47.8	165.3	0.00	0.00	0.00
2,240.0	15.77	196.81	2,220.6	-168.6	-50.9	176.2	0.00	0.00	0.00
2,280.0	15.77	196.81	2,259.1	-179.0	-54.1	187.0	0.00	0.00	0.00
2,320.0	15.77	196.81	2,297.6	-189.4	-57.2	197.9	0.00	0.00	0.00
2,360.0	15.77	196.81	2,336.1	-199.8	-60.4	208.8	0.00	0.00	0.00
2,400.0	15.77	196.81	2,374.6	-210.3	-63.5	219.6	0.00	0.00	0.00
2,440.0	15.77	196.81	2,413.1	-220.7	-66.7	230.5	0.00	0.00	0.00
2,480.0	15.77	196.81	2,451.6	-231.1	-69.8	241.4	0.00	0.00	0.00
2,520.0	15.77	196.81	2,490.1	-241.5	-72.9	252.2	0.00	0.00	0.00
2,560.0	15.77	196.81	2,528.6	-251.9	-76.1	263.1	0.00	0.00	0.00
2,600.0	15.77	196.81	2,567.1	-262.3	-79.2	274.0	0.00	0.00	0.00
2,640.0	15.77	196.81	2,605.6	-272.7	-82.4	284.8	0.00	0.00	0.00
2,680.0	15.77	196.81	2,644.1	-283.1	-85.5	295.7	0.00	0.00	0.00
2,720.0	15.77	196.81	2,682.6	-293.5	-88.7	306.6	0.00	0.00	0.00
2,760.0	15.77	196.81	2,721.1	-303.9	-91.8	317.4	0.00	0.00	0.00
2,800.0	15.77	196.81	2,759.6	-314.3	-94.9	328.3	0.00	0.00	0.00
2,840.0	15.77	196.81	2,798.0	-324.7	-98.1	339.2	0.00	0.00	0.00
2,880.0	15.77	196.81	2,836.5	-335.1	-101.2	350.1	0.00	0.00	0.00
2,920.0	15.77	196.81	2,875.0	-345.5	-104.4	360.9	0.00	0.00	0.00
2,960.0	15.77	196.81	2,913.5	-355.9	-107.5	371.8	0.00	0.00	0.00
3,000.0	15.77	196.81	2,952.0	-366.3	-110.7	382.7	0.00	0.00	0.00
3,040.0	15.77	196.81	2,990.5	-376.7	-113.8	393.5	0.00	0.00	0.00
3,080.0	15.77	196.81	3,029.0	-387.1	-116.9	404.4	0.00	0.00	0.00
3,120.0	15.77	196.81	3,067.5	-397.5	-120.1	415.3	0.00	0.00	0.00
3,160.0	15.77	196.81	3,106.0	-407.9	-123.2	426.1	0.00	0.00	0.00
3,200.0	15.77	196.81	3,144.5	-418.3	-126.4	437.0	0.00	0.00	0.00
3,240.0	15.77	196.81	3,183.0	-428.7	-129.5	447.9	0.00	0.00	0.00
3,280.0	15.77	196.81	3,221.5	-439.1	-132.7	458.7	0.00	0.00	0.00
3,320.0	15.77	196.81	3,260.0	-449.5	-135.8	469.6	0.00	0.00	0.00
3,360.0	15.77	196.81	3,298.5	-459.9	-138.9	480.5	0.00	0.00	0.00
3,400.0	15.77	196.81	3,337.0	-470.3	-142.1	491.3	0.00	0.00	0.00
3,440.0	15.77	196.81	3,375.5	-480.7	-145.2	502.2	0.00	0.00	0.00
3,480.0	15.77	196.81	3,414.0	-491.2	-148.4	513.1	0.00	0.00	0.00
3,520.0	15.77	196.81	3,452.5	-501.6	-151.5	523.9	0.00	0.00	0.00
3,560.0	15.77	196.81	3,491.0	-512.0	-154.7	534.8	0.00	0.00	0.00
3,600.0	15.77	196.81	3,529.5	-522.4	-157.8	545.7	0.00	0.00	0.00
3,640.0	15.77	196.81	3,568.0	-532.8	-160.9	556.5	0.00	0.00	0.00
3,680.0	15.77	196.81	3,606.5	-543.2	-164.1	567.4	0.00	0.00	0.00
3,720.0	15.77	196.81	3,644.9	-553.6	-167.2	578.3	0.00	0.00	0.00
3,760.0	15.77	196.81	3,683.4	-564.0	-170.4	589.2	0.00	0.00	0.00
3,800.0	15.77	196.81	3,721.9	-574.4	-173.5	600.0	0.00	0.00	0.00
3,840.0	15.77	196.81	3,760.4	-584.8	-176.7	610.9	0.00	0.00	0.00
3,880.0	15.77	196.81	3,798.9	-595.2	-179.8	621.8	0.00	0.00	0.00
3,920.0	15.77	196.81	3,837.4	-605.6	-182.9	632.6	0.00	0.00	0.00
3,960.0	15.77	196.81	3,875.9	-616.0	-186.1	643.5	0.00	0.00	0.00
4,000.0	15.77	196.81	3,914.4	-626.4	-189.2	654.4	0.00	0.00	0.00
4,040.0	15.77	196.81	3,952.9	-636.8	-192.4	665.2	0.00	0.00	0.00
4,080.0	15.77	196.81	3,991.4	-647.2	-195.5	676.1	0.00	0.00	0.00
4,120.0	15.77	196.81	4,029.9	-657.6	-198.7	687.0	0.00	0.00	0.00
4,160.0	15.77	196.81	4,068.4	-668.0	-201.8	697.8	0.00	0.00	0.00

Database:	EDM den0-adp01 Server Data	Local Co-ordinate Reference:	Well Walker Shands 6-18
Company:	BAYSWATER EXPLORATION & PRODUCTION	TVD Reference:	WELL @ 4860.0ft (Original Well Elev)
Project:	SEC.18-T6N-R66W	MD Reference:	WELL @ 4860.0ft (Original Well Elev)
Site:	Walker Shands 18-18 Pad Sec.18-T6N-R66W	North Reference:	True
Well:	Walker Shands 6-18	Survey Calculation Method:	Minimum Curvature
Wellbore:	Wellbore #1		
Design:	Plan#1 (7-28-10)		

Planned Survey									
Measured Depth (ft)	Inclination (°)	Azimuth (°)	Vertical Depth (ft)	+N/-S (ft)	+E/-W (ft)	Vertical Section (ft)	Dogleg Rate (°/100ft)	Build Rate (°/100ft)	Turn Rate (°/100ft)
4,200.0	15.77	196.81	4,106.9	-678.4	-204.9	708.7	0.00	0.00	0.00
4,240.0	15.77	196.81	4,145.4	-688.8	-208.1	719.6	0.00	0.00	0.00
4,280.0	15.77	196.81	4,183.9	-699.2	-211.2	730.4	0.00	0.00	0.00
4,320.0	15.77	196.81	4,222.4	-709.6	-214.4	741.3	0.00	0.00	0.00
4,360.0	15.77	196.81	4,260.9	-720.0	-217.5	752.2	0.00	0.00	0.00
4,400.0	15.77	196.81	4,299.4	-730.4	-220.7	763.0	0.00	0.00	0.00
4,440.0	15.77	196.81	4,337.9	-740.8	-223.8	773.9	0.00	0.00	0.00
4,480.0	15.77	196.81	4,376.4	-751.2	-227.0	784.8	0.00	0.00	0.00
4,520.0	15.77	196.81	4,414.9	-761.6	-230.1	795.6	0.00	0.00	0.00
4,560.0	15.77	196.81	4,453.3	-772.1	-233.2	806.5	0.00	0.00	0.00
4,600.0	15.77	196.81	4,491.8	-782.5	-236.4	817.4	0.00	0.00	0.00
4,640.0	15.77	196.81	4,530.3	-792.9	-239.5	828.2	0.00	0.00	0.00
4,680.0	15.77	196.81	4,568.8	-803.3	-242.7	839.1	0.00	0.00	0.00
4,720.0	15.77	196.81	4,607.3	-813.7	-245.8	850.0	0.00	0.00	0.00
4,760.0	15.77	196.81	4,645.8	-824.1	-249.0	860.9	0.00	0.00	0.00
4,800.0	15.77	196.81	4,684.3	-834.5	-252.1	871.7	0.00	0.00	0.00
4,840.0	15.77	196.81	4,722.8	-844.9	-255.2	882.6	0.00	0.00	0.00
4,880.0	15.77	196.81	4,761.3	-855.3	-258.4	893.5	0.00	0.00	0.00
4,920.0	15.77	196.81	4,799.8	-865.7	-261.5	904.3	0.00	0.00	0.00
4,960.0	15.77	196.81	4,838.3	-876.1	-264.7	915.2	0.00	0.00	0.00
5,000.0	15.77	196.81	4,876.8	-886.5	-267.8	926.1	0.00	0.00	0.00
5,040.0	15.77	196.81	4,915.3	-896.9	-271.0	936.9	0.00	0.00	0.00
5,080.0	15.77	196.81	4,953.8	-907.3	-274.1	947.8	0.00	0.00	0.00
5,120.0	15.77	196.81	4,992.3	-917.7	-277.2	958.7	0.00	0.00	0.00
5,150.5	15.77	196.81	5,021.6	-925.6	-279.6	967.0	0.00	0.00	0.00
5,160.0	15.58	196.81	5,030.8	-928.1	-280.4	969.5	2.00	-2.00	0.00
5,200.0	14.78	196.81	5,069.4	-938.1	-283.4	980.0	2.00	-2.00	0.00
5,240.0	13.98	196.81	5,108.1	-947.6	-286.3	989.9	2.00	-2.00	0.00
5,280.0	13.18	196.81	5,147.0	-956.6	-289.0	999.3	2.00	-2.00	0.00
5,320.0	12.38	196.81	5,186.0	-965.1	-291.5	1,008.2	2.00	-2.00	0.00
5,360.0	11.58	196.81	5,225.2	-973.0	-293.9	1,016.5	2.00	-2.00	0.00
5,400.0	10.78	196.81	5,264.4	-980.4	-296.2	1,024.2	2.00	-2.00	0.00
5,440.0	9.98	196.81	5,303.7	-987.3	-298.3	1,031.4	2.00	-2.00	0.00
5,480.0	9.18	196.81	5,343.2	-993.7	-300.2	1,038.1	2.00	-2.00	0.00
5,520.0	8.38	196.81	5,382.7	-999.6	-302.0	1,044.2	2.00	-2.00	0.00
5,560.0	7.58	196.81	5,422.3	-1,004.9	-303.6	1,049.7	2.00	-2.00	0.00
5,600.0	6.78	196.81	5,462.0	-1,009.6	-305.0	1,054.7	2.00	-2.00	0.00
5,640.0	5.98	196.81	5,501.8	-1,013.9	-306.3	1,059.2	2.00	-2.00	0.00
5,680.0	5.18	196.81	5,541.6	-1,017.6	-307.4	1,063.0	2.00	-2.00	0.00
5,720.0	4.38	196.81	5,581.4	-1,020.8	-308.4	1,066.4	2.00	-2.00	0.00
5,760.0	3.58	196.81	5,621.3	-1,023.5	-309.2	1,069.1	2.00	-2.00	0.00
5,800.0	2.78	196.81	5,661.3	-1,025.6	-309.8	1,071.4	2.00	-2.00	0.00
5,840.0	1.98	196.81	5,701.2	-1,027.2	-310.3	1,073.0	2.00	-2.00	0.00
5,880.0	1.18	196.81	5,741.2	-1,028.2	-310.6	1,074.1	2.00	-2.00	0.00
5,920.0	0.38	196.81	5,781.2	-1,028.7	-310.8	1,074.7	2.00	-2.00	0.00
5,938.8	0.00	0.00	5,800.0	-1,028.8	-310.8	1,074.7	2.00	-2.00	0.00
DRILL TARGET WALKER SHANDS 6-18									
5,960.0	0.00	0.00	5,821.2	-1,028.8	-310.8	1,074.7	0.00	0.00	0.00
6,000.0	0.00	0.00	5,861.2	-1,028.8	-310.8	1,074.7	0.00	0.00	0.00
6,040.0	0.00	0.00	5,901.2	-1,028.8	-310.8	1,074.7	0.00	0.00	0.00
6,080.0	0.00	0.00	5,941.2	-1,028.8	-310.8	1,074.7	0.00	0.00	0.00
6,120.0	0.00	0.00	5,981.2	-1,028.8	-310.8	1,074.7	0.00	0.00	0.00
6,160.0	0.00	0.00	6,021.2	-1,028.8	-310.8	1,074.7	0.00	0.00	0.00

Database:	EDM den0-adp01 Server Data	Local Co-ordinate Reference:	Well Walker Shands 6-18
Company:	BAYSWATER EXPLORATION & PRODUCTION	TVD Reference:	WELL @ 4860.0ft (Original Well Elev)
Project:	SEC.18-T6N-R66W	MD Reference:	WELL @ 4860.0ft (Original Well Elev)
Site:	Walker Shands 18-18 Pad Sec.18-T6N-R66W	North Reference:	True
Well:	Walker Shands 6-18	Survey Calculation Method:	Minimum Curvature
Wellbore:	Wellbore #1		
Design:	Plan#1 (7-28-10)		

Planned Survey

Measured Depth (ft)	Inclination (°)	Azimuth (°)	Vertical Depth (ft)	+N/-S (ft)	+E/-W (ft)	Vertical Section (ft)	Dogleg Rate (°/100ft)	Build Rate (°/100ft)	Turn Rate (°/100ft)
6,200.0	0.00	0.00	6,061.2	-1,028.8	-310.8	1,074.7	0.00	0.00	0.00
6,240.0	0.00	0.00	6,101.2	-1,028.8	-310.8	1,074.7	0.00	0.00	0.00
6,280.0	0.00	0.00	6,141.2	-1,028.8	-310.8	1,074.7	0.00	0.00	0.00
6,320.0	0.00	0.00	6,181.2	-1,028.8	-310.8	1,074.7	0.00	0.00	0.00
6,360.0	0.00	0.00	6,221.2	-1,028.8	-310.8	1,074.7	0.00	0.00	0.00
6,400.0	0.00	0.00	6,261.2	-1,028.8	-310.8	1,074.7	0.00	0.00	0.00
6,440.0	0.00	0.00	6,301.2	-1,028.8	-310.8	1,074.7	0.00	0.00	0.00
6,480.0	0.00	0.00	6,341.2	-1,028.8	-310.8	1,074.7	0.00	0.00	0.00
6,520.0	0.00	0.00	6,381.2	-1,028.8	-310.8	1,074.7	0.00	0.00	0.00
6,560.0	0.00	0.00	6,421.2	-1,028.8	-310.8	1,074.7	0.00	0.00	0.00
6,600.0	0.00	0.00	6,461.2	-1,028.8	-310.8	1,074.7	0.00	0.00	0.00
6,640.0	0.00	0.00	6,501.2	-1,028.8	-310.8	1,074.7	0.00	0.00	0.00
6,680.0	0.00	0.00	6,541.2	-1,028.8	-310.8	1,074.7	0.00	0.00	0.00
6,720.0	0.00	0.00	6,581.2	-1,028.8	-310.8	1,074.7	0.00	0.00	0.00
6,760.0	0.00	0.00	6,621.2	-1,028.8	-310.8	1,074.7	0.00	0.00	0.00
6,800.0	0.00	0.00	6,661.2	-1,028.8	-310.8	1,074.7	0.00	0.00	0.00
6,840.0	0.00	0.00	6,701.2	-1,028.8	-310.8	1,074.7	0.00	0.00	0.00
6,880.0	0.00	0.00	6,741.2	-1,028.8	-310.8	1,074.7	0.00	0.00	0.00
6,920.0	0.00	0.00	6,781.2	-1,028.8	-310.8	1,074.7	0.00	0.00	0.00
6,960.0	0.00	0.00	6,821.2	-1,028.8	-310.8	1,074.7	0.00	0.00	0.00
7,000.0	0.00	0.00	6,861.2	-1,028.8	-310.8	1,074.7	0.00	0.00	0.00
7,040.0	0.00	0.00	6,901.2	-1,028.8	-310.8	1,074.7	0.00	0.00	0.00
7,048.8	0.00	0.00	6,910.0	-1,028.8	-310.8	1,074.7	0.00	0.00	0.00
BHT 1866'FNL, 2057'FWL									
7,080.0	0.00	0.00	6,941.2	-1,028.8	-310.8	1,074.7	0.00	0.00	0.00
7,120.0	0.00	0.00	6,981.2	-1,028.8	-310.8	1,074.7	0.00	0.00	0.00
7,160.0	0.00	0.00	7,021.2	-1,028.8	-310.8	1,074.7	0.00	0.00	0.00
7,200.0	0.00	0.00	7,061.2	-1,028.8	-310.8	1,074.7	0.00	0.00	0.00
7,240.0	0.00	0.00	7,101.2	-1,028.8	-310.8	1,074.7	0.00	0.00	0.00
7,280.0	0.00	0.00	7,141.2	-1,028.8	-310.8	1,074.7	0.00	0.00	0.00
7,320.0	0.00	0.00	7,181.2	-1,028.8	-310.8	1,074.7	0.00	0.00	0.00
7,360.0	0.00	0.00	7,221.2	-1,028.8	-310.8	1,074.7	0.00	0.00	0.00
7,400.0	0.00	0.00	7,261.2	-1,028.8	-310.8	1,074.7	0.00	0.00	0.00
7,440.0	0.00	0.00	7,301.2	-1,028.8	-310.8	1,074.7	0.00	0.00	0.00
7,480.0	0.00	0.00	7,341.2	-1,028.8	-310.8	1,074.7	0.00	0.00	0.00
7,520.0	0.00	0.00	7,381.2	-1,028.8	-310.8	1,074.7	0.00	0.00	0.00
7,560.0	0.00	0.00	7,421.2	-1,028.8	-310.8	1,074.7	0.00	0.00	0.00
7,588.8	0.00	0.00	7,450.0	-1,028.8	-310.8	1,074.7	0.00	0.00	0.00

Targets

Target Name	Dip Angle (°)	Dip Dir. (°)	TVD (ft)	+N/-S (ft)	+E/-W (ft)	Northing (ft)	Easting (ft)	Latitude	Longitude
- hit/miss target									
- Shape									
BHT 1866'FNL, 2057'I	0.00	0.00	6,910.0	-1,028.8	-310.8	1,421,851.91	3,187,755.72	40° 29' 21.923 N	104° 49' 29.857 W
- plan hits target center									
- Circle (radius 75.0)									
DRILL TARGET WAL	0.00	0.00	5,800.0	-1,028.8	-310.8	1,421,851.91	3,187,755.72	40° 29' 21.923 N	104° 49' 29.857 W
- plan hits target center									
- Point									

Database:	EDM den0-adp01 Server Data	Local Co-ordinate Reference:	Well Walker Shands 6-18
Company:	BAYSWATER EXPLORATION & PRODUCTION	TVD Reference:	WELL @ 4860.0ft (Original Well Elev)
Project:	SEC.18-T6N-R66W	MD Reference:	WELL @ 4860.0ft (Original Well Elev)
Site:	Walker Shands 18-18 Pad Sec.18-T6N-R66W	North Reference:	True
Well:	Walker Shands 6-18	Survey Calculation Method:	Minimum Curvature
Wellbore:	Wellbore #1		
Design:	Plan#1 (7-28-10)		



BAYSWATER EXPLORATION & PRODUCTION

SEC.18-T6N-R66W

Walker Shands 18-18 Pad Sec.18-T6N-R66W

Walker Shands 6-18

Wellbore #1

Plan#1 (7-28-10)

Anticollision Report

09 August, 2010

Company:	BAYSWATER EXPLORATION & PRODUCTION	Local Co-ordinate Reference:	Well Walker Shands 6-18
Project:	SEC.18-T6N-R66W	TVD Reference:	WELL @ 4860.0ft (Original Well Elev)
Reference Site:	Walker Shands 18-18 Pad Sec.18-T6N-R66W	MD Reference:	WELL @ 4860.0ft (Original Well Elev)
Site Error:	0.0ft	North Reference:	True
Reference Well:	Walker Shands 6-18	Survey Calculation Method:	Minimum Curvature
Well Error:	0.0ft	Output errors are at	2.00 sigma
Reference Wellbore	Wellbore #1	Database:	EDM den0-adp01 Server Data
Reference Design:	Plan#1 (7-28-10)	Offset TVD Reference:	Offset Datum

Reference	Plan#1 (7-28-10)		
Filter type:	NO GLOBAL FILTER: Using user defined selection & filtering criteria		
Interpolation Method:	MD Interval 100.0ft	Error Model:	ISCSWA
Depth Range:	Unlimited	Scan Method:	Closest Approach 3D
Results Limited by:	Maximum center-center distance of 2,000.0ft	Error Surface:	Elliptical Conic
Warning Levels Evaluated at:	2.00 Sigma		

Survey Tool Program		Date	8/9/2010		
From (ft)	To (ft)	Survey (Wellbore)	Tool Name	Description	
0.0	7,588.7	Plan#1 (7-28-10) (Wellbore #1)	MWD	MWD - Standard	

Summary						
Site Name	Reference Measured Depth	Offset Measured Depth	Distance Between Centres	Distance Between Ellipses	Separation Factor	Warning
Offset Well - Wellbore - Design	(ft)	(ft)	(ft)	(ft)		
Walker Shands 18-18 Pad Sec.18-T6N-R66W						
Walker Shands 18-18 - Wellbore #1 - Plan#1 (7-28-10)	966.0	968.0	24.9	20.8	6.053	CC
Walker Shands 18-18 - Wellbore #1 - Plan#1 (7-28-10)	1,100.0	1,101.9	25.1	20.4	5.341	ES
Walker Shands 18-18 - Wellbore #1 - Plan#1 (7-28-10)	1,200.0	1,201.6	26.2	21.1	5.136	SF

Offset Design		Walker Shands 18-18 Pad Sec.18-T6N-R66W - Walker Shands 18-18 - Wellbore #1 - Plan#1 (7-28-10)										Offset Site Error:		0.0 ft
Survey Program: 0-MWD												Offset Well Error:		0.0 ft
Reference		Offset		Semi Major Axis			Distance							
Measured Depth (ft)	Vertical Depth (ft)	Measured Depth (ft)	Vertical Depth (ft)	Reference (ft)	Offset (ft)	Highside Toolface (°)	Offset Wellbore Centre +N/-S (ft)	+E/-W (ft)	Between Centres (ft)	Between Ellipses (ft)	Minimum Separation (ft)	Separation Factor	Warning	
0.0	0.0	2.0	2.0	0.0	0.0	-63.11	11.3	-22.3	24.9	24.9	0.00	N/A		
100.0	100.0	102.0	102.0	0.1	0.1	-63.11	11.3	-22.3	24.9	24.7	0.23	108.827		
200.0	200.0	202.0	202.0	0.3	0.3	-63.11	11.3	-22.3	24.9	24.3	0.68	36.756		
300.0	300.0	302.0	302.0	0.6	0.6	-63.11	11.3	-22.3	24.9	23.8	1.13	22.112		
400.0	400.0	402.0	402.0	0.8	0.8	-63.11	11.3	-22.3	24.9	23.4	1.58	15.812		
500.0	500.0	502.0	502.0	1.0	1.0	-63.11	11.3	-22.3	24.9	22.9	2.03	12.306		
600.0	600.0	602.0	602.0	1.2	1.2	-63.11	11.3	-22.3	24.9	22.5	2.48	10.073		
700.0	700.0	702.0	702.0	1.5	1.5	-63.11	11.3	-22.3	24.9	22.0	2.93	8.526		
800.0	800.0	802.0	802.0	1.7	1.7	-63.11	11.3	-22.3	24.9	21.6	3.38	7.390		
900.0	900.0	902.0	902.0	1.9	1.9	-63.11	11.3	-22.3	24.9	21.1	3.83	6.522		
966.0	966.0	968.0	968.0	2.1	2.1	-63.11	11.3	-22.3	24.9	20.8	4.12	6.053 CC		
1,000.0	1,000.0	1,002.0	1,002.0	2.1	2.1	-63.11	11.3	-22.3	24.9	20.7	4.27	5.837		
1,100.0	1,100.0	1,101.9	1,101.9	2.4	2.3	-67.25	9.7	-23.1	25.1	20.4	4.70	5.341 ES		
1,200.0	1,200.0	1,201.6	1,201.4	2.6	2.5	-78.81	5.1	-25.7	26.2	21.1	5.10	5.136 SF		
1,300.0	1,300.0	1,300.7	1,300.2	2.8	2.7	71.98	-2.2	-30.1	29.7	24.2	5.49	5.403		
1,400.0	1,399.8	1,399.4	1,398.2	3.0	2.9	66.35	-10.7	-37.6	36.0	30.1	5.88	6.119		
1,500.0	1,499.5	1,497.6	1,495.4	3.1	3.2	65.84	-20.2	-48.2	44.4	38.1	6.29	7.058		
1,600.0	1,598.7	1,595.4	1,591.7	3.4	3.5	68.13	-30.5	-62.0	54.8	48.1	6.74	8.132		
1,700.0	1,697.5	1,692.5	1,686.6	3.6	3.8	71.65	-41.6	-78.8	67.4	60.2	7.25	9.303		
1,800.0	1,795.6	1,789.0	1,780.4	3.9	4.2	75.51	-53.6	-98.5	82.5	74.7	7.83	10.534		
1,900.0	1,893.1	1,887.5	1,875.6	4.2	4.6	79.80	-66.1	-120.0	98.5	90.0	8.51	11.578		
2,000.0	1,989.6	1,985.7	1,970.7	4.6	5.1	84.55	-78.7	-141.4	114.6	105.4	9.29	12.338		
2,100.0	2,085.9	2,083.9	2,065.6	5.0	5.5	88.93	-91.2	-162.8	131.4	121.2	10.15	12.947		

Company:	BAYSWATER EXPLORATION & PRODUCTION	Local Co-ordinate Reference:	Well Walker Shands 6-18
Project:	SEC.18-T6N-R66W	TVD Reference:	WELL @ 4860.0ft (Original Well Elev)
Reference Site:	Walker Shands 18-18 Pad Sec.18-T6N-R66W	MD Reference:	WELL @ 4860.0ft (Original Well Elev)
Site Error:	0.0ft	North Reference:	True
Reference Well:	Walker Shands 6-18	Survey Calculation Method:	Minimum Curvature
Well Error:	0.0ft	Output errors are at	2.00 sigma
Reference Wellbore	Wellbore #1	Database:	EDM den0-adp01 Server Data
Reference Design:	Plan#1 (7-28-10)	Offset TVD Reference:	Offset Datum

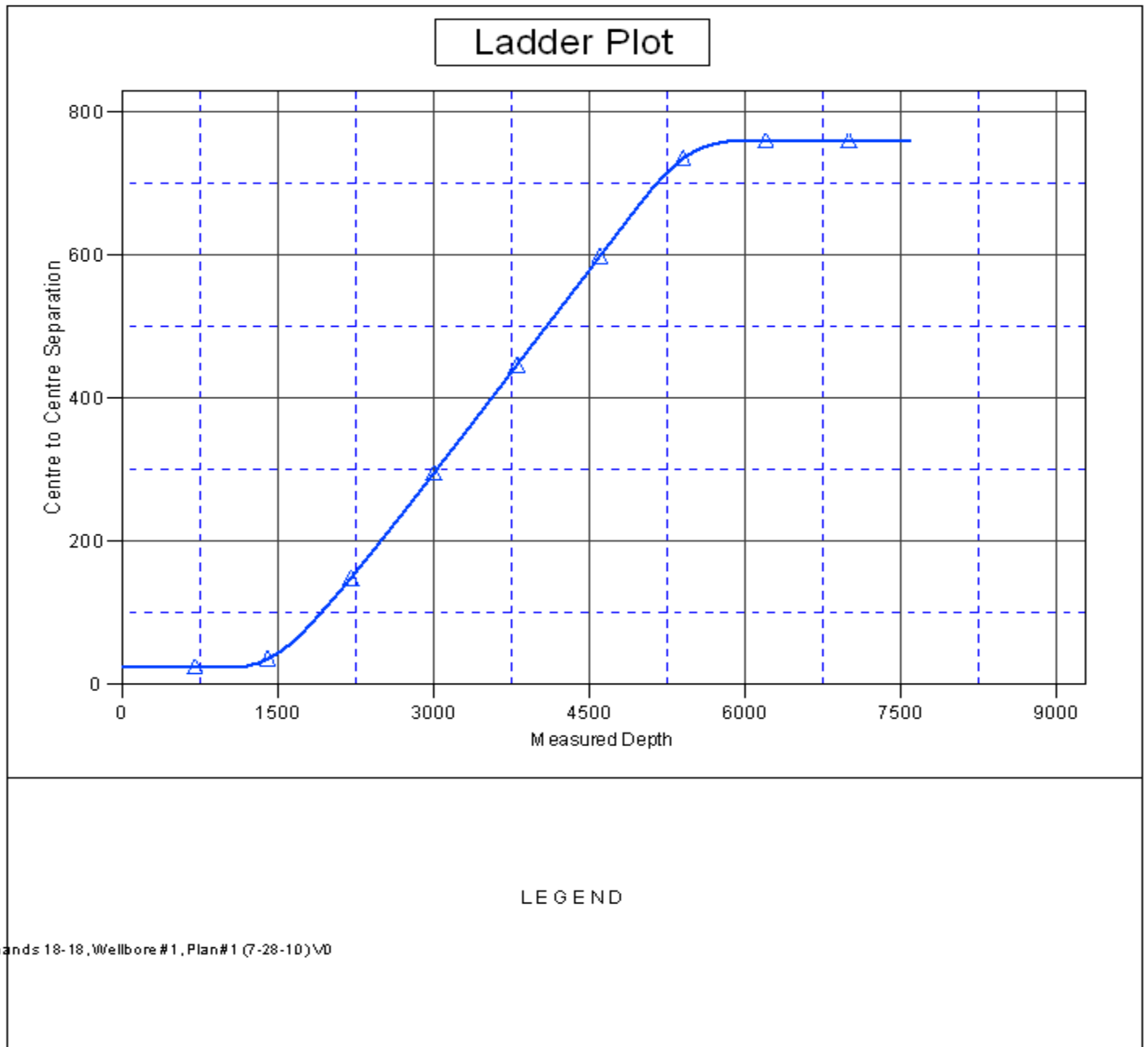
Offset Design				Walker Shands 18-18 Pad Sec.18-T6N-R66W - Walker Shands 18-18 - Wellbore #1 - Plan#1 (7-28-10)								Offset Site Error:		0.0 ft
Survey Program: 0-MWD												Offset Well Error:		0.0 ft
Reference		Offset		Semi Major Axis			Distance							
Measured Depth (ft)	Vertical Depth (ft)	Measured Depth (ft)	Vertical Depth (ft)	Reference (ft)	Offset (ft)	Highside Toolface (°)	Offset Wellbore Centre +N/-S (ft)	Offset Wellbore Centre +E/-W (ft)	Between Centres (ft)	Between Ellipses (ft)	Minimum Separation (ft)	Separation Factor	Warning	
2,200.0	2,182.1	2,182.0	2,160.6	5.5	6.0	92.30	-103.7	-184.2	148.7	137.7	11.04	13.468		
2,300.0	2,278.4	2,280.2	2,255.6	5.9	6.5	94.97	-116.3	-205.5	166.4	154.5	11.96	13.913		
2,400.0	2,374.6	2,378.3	2,350.6	6.4	7.0	97.12	-128.8	-226.9	184.4	171.5	12.90	14.293		
2,500.0	2,470.8	2,476.5	2,445.5	6.9	7.5	98.89	-141.3	-248.3	202.7	188.8	13.86	14.621		
2,600.0	2,567.1	2,574.6	2,540.5	7.4	8.0	100.37	-153.8	-269.7	221.0	206.2	14.83	14.904		
2,700.0	2,663.3	2,672.8	2,635.5	7.9	8.5	101.62	-166.4	-291.1	239.5	223.7	15.81	15.151		
2,800.0	2,759.6	2,770.9	2,730.4	8.5	9.0	102.69	-178.9	-312.5	258.1	241.3	16.79	15.368		
2,900.0	2,855.8	2,869.1	2,825.4	9.0	9.5	103.62	-191.4	-333.9	276.8	259.0	17.79	15.559		
3,000.0	2,952.0	2,967.2	2,920.4	9.5	10.0	104.43	-204.0	-355.2	295.5	276.7	18.79	15.728		
3,100.0	3,048.3	3,065.4	3,015.3	10.1	10.5	105.15	-216.5	-376.6	314.3	294.5	19.79	15.880		
3,200.0	3,144.5	3,163.5	3,110.3	10.6	11.0	105.78	-229.0	-398.0	333.1	312.3	20.80	16.016		
3,300.0	3,240.7	3,261.7	3,205.3	11.1	11.6	106.35	-241.6	-419.4	351.9	330.1	21.81	16.138		
3,400.0	3,337.0	3,359.9	3,300.3	11.7	12.1	106.85	-254.1	-440.8	370.8	348.0	22.82	16.249		
3,500.0	3,433.2	3,458.0	3,395.2	12.2	12.6	107.31	-266.6	-462.2	389.7	365.9	23.83	16.350		
3,600.0	3,529.5	3,556.2	3,490.2	12.8	13.1	107.73	-279.1	-483.6	408.6	383.8	24.85	16.442		
3,700.0	3,625.7	3,654.3	3,585.2	13.3	13.7	108.11	-291.7	-504.9	427.6	401.7	25.87	16.526		
3,800.0	3,721.9	3,752.5	3,680.1	13.9	14.2	108.46	-304.2	-526.3	446.5	419.6	26.89	16.604		
3,900.0	3,818.2	3,850.6	3,775.1	14.4	14.7	108.78	-316.7	-547.7	465.5	437.6	27.92	16.675		
4,000.0	3,914.4	3,948.8	3,870.1	15.0	15.2	109.07	-329.3	-569.1	484.5	455.6	28.94	16.742		
4,100.0	4,010.7	4,046.9	3,965.0	15.5	15.8	109.34	-341.8	-590.5	503.5	473.5	29.96	16.803		
4,200.0	4,106.9	4,145.1	4,060.0	16.1	16.3	109.59	-354.3	-611.9	522.5	491.5	30.99	16.860		
4,300.0	4,203.1	4,243.2	4,155.0	16.7	16.8	109.83	-366.9	-633.3	541.5	509.5	32.02	16.913		
4,400.0	4,299.4	4,341.4	4,249.9	17.2	17.4	110.05	-379.4	-654.7	560.6	527.5	33.05	16.963		
4,500.0	4,395.6	4,439.5	4,344.9	17.8	17.9	110.25	-391.9	-676.0	579.6	545.5	34.08	17.009		
4,600.0	4,491.8	4,537.7	4,439.9	18.3	18.4	110.44	-404.4	-697.4	598.6	563.5	35.11	17.053		
4,700.0	4,588.1	4,635.8	4,534.9	18.9	19.0	110.62	-417.0	-718.8	617.7	581.5	36.14	17.094		
4,800.0	4,684.3	4,734.0	4,629.8	19.4	19.5	110.79	-429.5	-740.2	636.7	599.6	37.17	17.132		
4,900.0	4,780.6	4,832.1	4,724.8	20.0	20.0	110.95	-442.0	-761.6	655.8	617.6	38.20	17.168		
5,000.0	4,876.8	4,934.2	4,823.7	20.6	20.5	111.14	-454.9	-783.5	674.7	635.5	39.19	17.219		
5,100.0	4,973.0	5,041.3	4,928.1	21.1	20.9	111.59	-466.7	-803.6	692.6	652.5	40.07	17.284		
5,200.0	5,069.4	5,148.3	5,033.4	21.6	21.2	112.45	-476.5	-820.4	709.1	668.2	40.89	17.342		
5,300.0	5,166.5	5,255.6	5,139.6	22.0	21.5	113.44	-484.3	-833.7	723.4	681.9	41.54	17.414		
5,400.0	5,264.4	5,363.1	5,246.4	22.3	21.8	114.38	-490.1	-843.7	735.2	693.1	42.10	17.462		
5,500.0	5,362.9	5,470.6	5,353.7	22.6	21.9	115.29	-493.9	-850.1	744.5	702.0	42.58	17.487		
5,600.0	5,462.0	5,578.1	5,461.1	22.9	22.1	116.17	-495.7	-853.1	751.4	708.4	42.96	17.491		
5,700.0	5,561.5	5,680.5	5,563.5	23.1	22.2	116.93	-495.8	-853.4	756.0	712.7	43.27	17.472		
5,800.0	5,661.3	5,780.3	5,663.3	23.3	22.3	117.43	-495.8	-853.4	759.0	715.5	43.54	17.433		
5,900.0	5,761.2	5,880.2	5,763.2	23.4	22.4	117.66	-495.8	-853.4	760.4	716.7	43.78	17.371		
6,000.0	5,861.2	5,980.2	5,863.2	23.5	22.5	-45.51	-495.8	-853.4	760.6	716.6	44.01	17.283		
6,100.0	5,961.2	6,080.2	5,963.2	23.6	22.7	-45.51	-495.8	-853.4	760.6	716.3	44.23	17.196		
6,200.0	6,061.2	6,180.2	6,063.2	23.7	22.8	-45.51	-495.8	-853.4	760.6	716.1	44.46	17.108		
6,300.0	6,161.2	6,280.2	6,163.2	23.8	22.9	-45.51	-495.8	-853.4	760.6	715.9	44.69	17.020		
6,400.0	6,261.2	6,380.2	6,263.2	23.9	23.0	-45.51	-495.8	-853.4	760.6	715.6	44.92	16.931		
6,500.0	6,361.2	6,480.2	6,363.2	24.0	23.1	-45.51	-495.8	-853.4	760.6	715.4	45.16	16.842		
6,600.0	6,461.2	6,580.2	6,463.2	24.1	23.3	-45.51	-495.8	-853.4	760.6	715.2	45.40	16.753		
6,700.0	6,561.2	6,680.2	6,563.2	24.2	23.4	-45.51	-495.8	-853.4	760.6	714.9	45.64	16.663		
6,800.0	6,661.2	6,780.2	6,663.2	24.4	23.5	-45.51	-495.8	-853.4	760.6	714.7	45.89	16.574		
6,900.0	6,761.2	6,880.2	6,763.2	24.5	23.6	-45.51	-495.8	-853.4	760.6	714.4	46.14	16.484		
7,000.0	6,861.2	6,980.2	6,863.2	24.6	23.8	-45.51	-495.8	-853.4	760.6	714.2	46.39	16.394		
7,100.0	6,961.2	7,080.2	6,963.2	24.7	23.9	-45.51	-495.8	-853.4	760.6	713.9	46.65	16.304		
7,200.0	7,061.2	7,180.2	7,063.2	24.8	24.0	-45.51	-495.8	-853.4	760.6	713.7	46.91	16.215		

Company:	BAYSWATER EXPLORATION & PRODUCTION	Local Co-ordinate Reference:	Well Walker Shands 6-18
Project:	SEC.18-T6N-R66W	TVD Reference:	WELL @ 4860.0ft (Original Well Elev)
Reference Site:	Walker Shands 18-18 Pad Sec.18-T6N-R66W	MD Reference:	WELL @ 4860.0ft (Original Well Elev)
Site Error:	0.0ft	North Reference:	True
Reference Well:	Walker Shands 6-18	Survey Calculation Method:	Minimum Curvature
Well Error:	0.0ft	Output errors are at	2.00 sigma
Reference Wellbore	Wellbore #1	Database:	EDM den0-adp01 Server Data
Reference Design:	Plan#1 (7-28-10)	Offset TVD Reference:	Offset Datum

Offset Design Walker Shands 18-18 Pad Sec.18-T6N-R66W - Walker Shands 18-18 - Wellbore #1 - Plan#1 (7-28-10)													Offset Site Error:	0.0 ft
Survey Program: 0-MWD													Offset Well Error:	0.0 ft
Reference		Offset		Semi Major Axis		Distance							Warning	
Measured Depth (ft)	Vertical Depth (ft)	Measured Depth (ft)	Vertical Depth (ft)	Reference (ft)	Offset (ft)	Highside Toolface (°)	Offset Wellbore Centre +N/-S (ft)	+E/-W (ft)	Between Centres (ft)	Between Ellipses (ft)	Minimum Separation (ft)	Separation Factor		
7,300.0	7,161.2	7,280.2	7,163.2	24.9	24.2	-45.51	-495.8	-853.4	760.6	713.4	47.17	16.125		
7,400.0	7,261.2	7,380.2	7,263.2	25.0	24.3	-45.51	-495.8	-853.4	760.6	713.1	47.43	16.035		
7,500.0	7,361.2	7,480.2	7,363.2	25.2	24.4	-45.51	-495.8	-853.4	760.6	712.9	47.70	15.945		
7,588.8	7,450.0	7,569.0	7,452.0	25.3	24.6	-45.51	-495.8	-853.4	760.6	712.6	47.94	15.865		

Company:	BAYSWATER EXPLORATION & PRODUCTION	Local Co-ordinate Reference:	Well Walker Shands 6-18
Project:	SEC.18-T6N-R66W	TVD Reference:	WELL @ 4860.0ft (Original Well Elev)
Reference Site:	Walker Shands 18-18 Pad Sec.18-T6N-R66W	MD Reference:	WELL @ 4860.0ft (Original Well Elev)
Site Error:	0.0ft	North Reference:	True
Reference Well:	Walker Shands 6-18	Survey Calculation Method:	Minimum Curvature
Well Error:	0.0ft	Output errors are at	2.00 sigma
Reference Wellbore	Wellbore #1	Database:	EDM den0-adp01 Server Data
Reference Design:	Plan#1 (7-28-10)	Offset TVD Reference:	Offset Datum

Reference Depths are relative to WELL @ 4860.0ft (Original Well Elev) Coordinates are relative to: Walker Shands 6-18
Offset Depths are relative to Offset Datum
Central Meridian is 105° 30' 0.000 W °
Coordinate System is US State Plane 1983, Colorado Northern Zone
Grid Convergence at Surface is: 0.44°



Company:	BAYSWATER EXPLORATION & PRODUCTION	Local Co-ordinate Reference:	Well Walker Shands 6-18
Project:	SEC.18-T6N-R66W	TVD Reference:	WELL @ 4860.0ft (Original Well Elev)
Reference Site:	Walker Shands 18-18 Pad Sec.18-T6N-R66W	MD Reference:	WELL @ 4860.0ft (Original Well Elev)
Site Error:	0.0ft	North Reference:	True
Reference Well:	Walker Shands 6-18	Survey Calculation Method:	Minimum Curvature
Well Error:	0.0ft	Output errors are at	2.00 sigma
Reference Wellbore	Wellbore #1	Database:	EDM den0-adp01 Server Data
Reference Design:	Plan#1 (7-28-10)	Offset TVD Reference:	Offset Datum

Reference Depths are relative to WELL @ 4860.0ft (Original Well Elev) Coordinates are relative to: Walker Shands 6-18
 Offset Depths are relative to Offset Datum Coordinate System is US State Plane 1983, Colorado Northern Zone
 Central Meridian is 105° 30' 0.000 W ° Grid Convergence at Surface is: 0.44°

