

ENSIGN

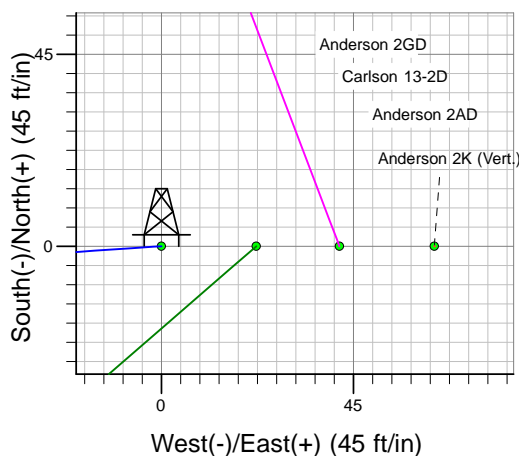
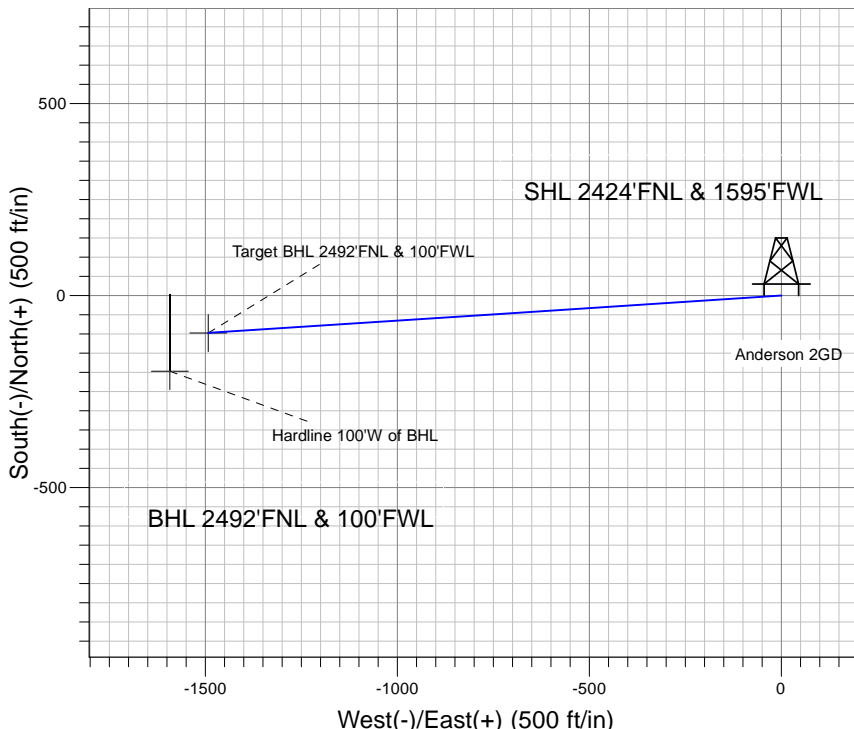
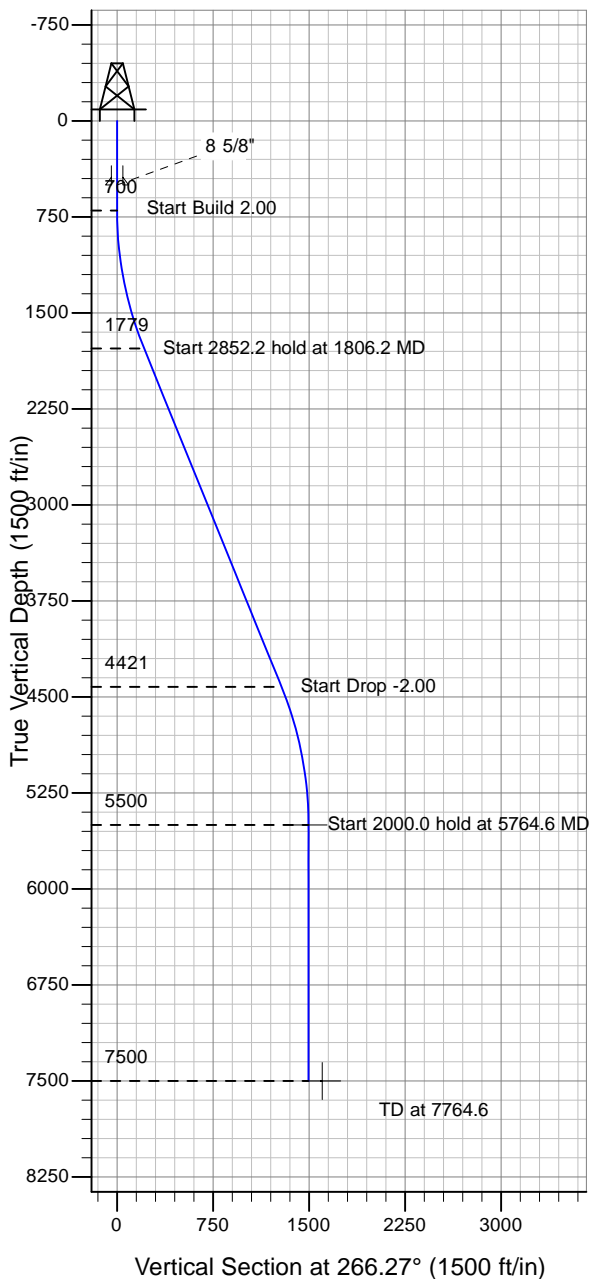
Directional

Well Name: Anderson 2GD

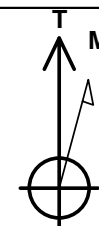
Surface Location: Anderson 2GD Pad Sec.2-T6N-R66W
 North American Datum 1983 , US State Plane 1983 , Colorado Northern Zone
 Ground Elevation: 4875.0

+N/-S+E/-W Northing Easting Latitude Longitude Slot
 0.0 0.01432293.21 3208734.72 40° 31' 3.432 N 104° 44' 57.192 W
 Original Well Elev WELL @ 4888.0ft (Original Well Elev)

PETROLEUM DEVELOPMENT CORP Weld County CO



Anderson 2GD Pad Sec.2-T6N-R66W
 Anderson 2GD
 Plan #1 (8-20-10)
 13:28, August 23 2010



Azimuths to True North
 Magnetic North: 8.98°

Magnetic Field
 Strength: 53280.8nT
 Dip Angle: 67.18°
 Date: 8/20/2010
 Model: IGRF2010

WELLBORE TARGET DETAILS (LAT/LONG)

Name	TVD	+N/-S	+E/-W	Latitude	Longitude	Shape
Target BHL 2492'FNL & 100'FWL	5500.0	-97.4	-1492.8	40° 31' 2.469 N	104° 45' 16.521 W	Point
Hardline 100'W of BHL	7500.0	-197.4	-1592.8	40° 31' 1.481 N	104° 45' 17.815 W	Polygon

SECTION DETAILS

Sec	MD	Inc	Azi	TVD	+N/-S	+E/-W	DLeg	TFace	VSec	Target
1	0.0	0.00	0.00	0.0	0.0	0.0	0.00	0.00	0.0	
2	700.0	0.00	0.00	700.0	0.0	0.0	0.00	0.00	0.0	
3	1806.2	22.12	266.27	1778.9	-13.7	-210.5	2.00	266.27	210.9	
4	4658.4	22.12	266.27	4421.1	-83.7	-1282.4	0.00	0.00	1285.1	
5	5764.6	0.00	0.00	5500.0	-97.4	-1492.8	2.00	180.00	1496.0	Target BHL 2492'FNL & 100'FWL
6	7764.6	0.00	0.00	7500.0	-97.4	-1492.8	0.00	0.00	1496.0	