

# ENSIGN

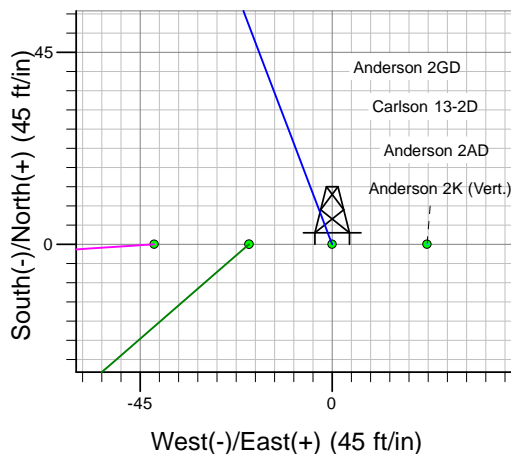
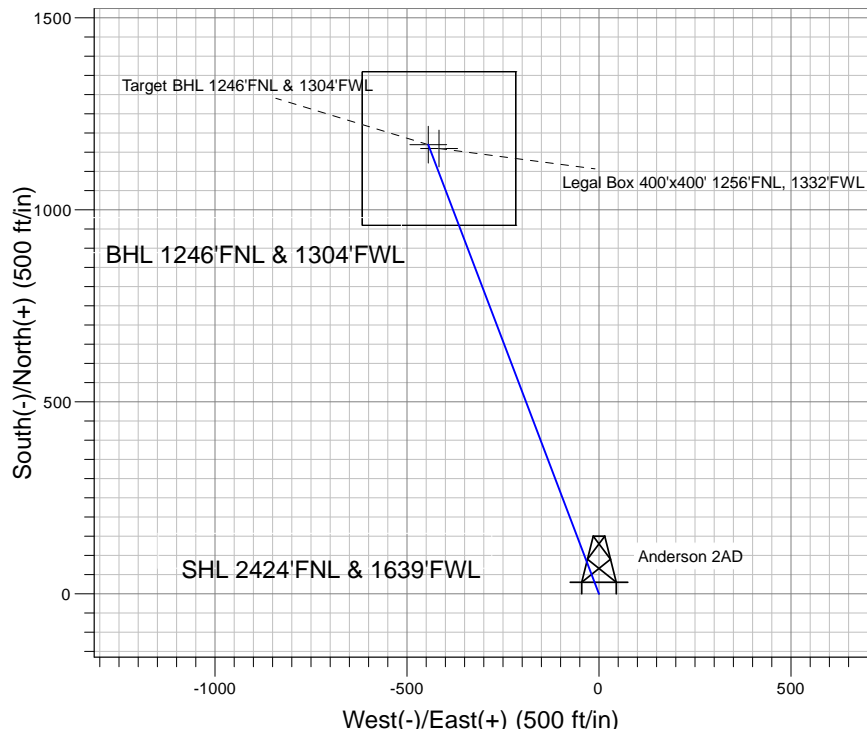
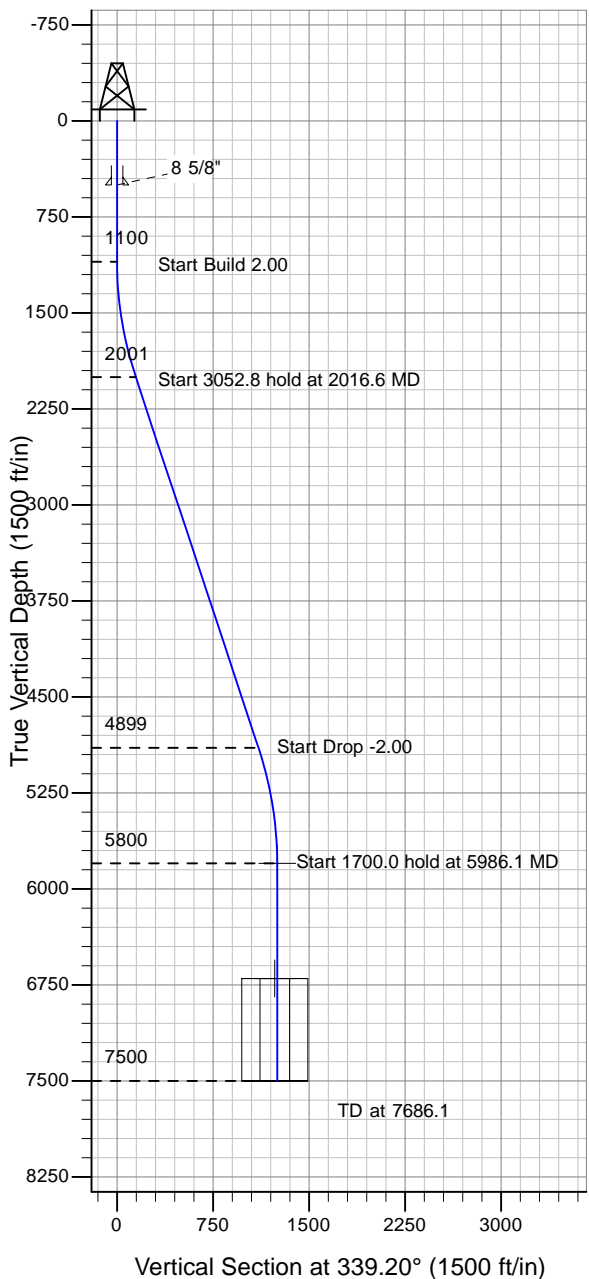
## Directional

### Well Name: Anderson 2AD

Surface Location: Anderson 2GD Pad Sec.2-T6N-R66W  
 North American Datum 1983 , US State Plane 1983 , Colorado Northern Zone  
 Ground Elevation: 4875.0

+N/-S+E/-W Northing Easting Latitude Longitude Slot  
 0.0 0.0 1432293.57 3208776.42 40° 31' 3.432 N 104° 44' 56.652 W  
 Original Well Elev WELL @ 4888.0ft (Original Well Elev)

### PETROLEUM DEVELOPMENT CORP Weld County CO



Anderson 2GD Pad Sec.2-T6N-R66W  
 Anderson 2AD  
 Plan #1 (8-20-10)  
 14:03, August 23 2010



Azimuths to True North  
 Magnetic North: 8.98°

Magnetic Field  
 Strength: 53280.8snT  
 Dip Angle: 67.18°  
 Date: 8/20/2010  
 Model: IGRF2010

### WELLBORE TARGET DETAILS (LAT/LONG)

Name	TVD	+N/-S	+E/-W	Latitude	Longitude	Shape
Target BHL 1246'FNL & 1304'FWL	5800.0	1169.5	-444.2	40° 31' 14.988 N	104° 45' 2.404 W	Point
Legal Box 400'x400' 1256'FNL, 1332'FWL	6700.0	1159.5	-416.2	40° 31' 14.889 N	104° 45' 2.041 W	Rectangle (Sides: L400.0 W400.0)

### SECTION DETAILS

Sec	MD	Inc	Azi	TVD	+N/-S	+E/-W	DLeg	TFace	VSec	Target
1	0.0	0.00	0.00	0.0	0.0	0.0	0.00	0.00	0.0	
2	1100.0	0.00	0.00	1100.0	0.0	0.0	0.00	0.00	0.0	
3	2016.6	18.33	339.20	2001.1	135.9	-51.6	2.00	339.20	145.4	
4	5069.4	18.33	339.20	4898.9	1033.5	-392.6	0.00	0.00	1105.6	
5	5986.1	0.00	0.00	5800.0	1169.5	-444.2	2.00	180.00	1251.0	Target BHL 1246'FNL & 1304'FWL
6	7686.1	0.00	0.00	7500.0	1169.5	-444.2	0.00	0.00	1251.0	