
BILL BARRETT CORPORATION E-BILL

**MILLER 14C-31-691
MAMM CREEK
Garfield County , Colorado**

Cement Surface Casing
31-Jul-2010

Post Job Report

The Road to Excellence Starts with Safety

Sold To #: 343492	Ship To #: 2798146	Quote #:	Sales Order #: 7534575
Customer: BILL BARRETT CORPORATION E-BILL	Customer Rep: South, Jodi		
Well Name: MILLER	Well #: 14C-31-691	API/UWI #: 05-045-19508	
Field: MAMM CREEK	City (SAP): SILT	County/Parish: Garfield	State: Colorado
Lat: N 39.481 deg. OR N 39 deg. 28 min. 52.23 secs.	Long: W 107.601 deg. OR W -108 deg. 23 min. 56.134 secs.		
Contractor: PROPETRO	Rig/Platform Name/Num: PRO PETRO		
Job Purpose: Cement Surface Casing			
Well Type: Development Well	Job Type: Cement Surface Casing		
Sales Person: METLI, MARSHALL	Srv Supervisor: MILLER, KEVIN	MBU ID Emp #: 443040	

Job Personnel

HES Emp Name	Exp Hrs	Emp #	HES Emp Name	Exp Hrs	Emp #	HES Emp Name	Exp Hrs	Emp #
MILLER, KEVIN Paul	4	443040	ROSS, CHARLES Raymond	4	453128	STEELE, BENJAMIN F	4	458599
WYCKOFF, RYAN Scott	4	476117						

Equipment

HES Unit #	Distance-1 way	HES Unit #	Distance-1 way	HES Unit #	Distance-1 way	HES Unit #	Distance-1 way
10783493	120 mile	10822007	120 mile	10872429	120 mile	11259885	120 mile
11360883	120 mile						

Job Hours

Date	On Location Hours	Operating Hours	Date	On Location Hours	Operating Hours	Date	On Location Hours	Operating Hours
7/31/10	4	1.5						

TOTAL	Total is the sum of each column separately							
-------	--	--	--	--	--	--	--	--

Job

Formation Name	Formation Depth (MD)	Top	Bottom	Form Type	Job depth MD	Job Depth TVD	Water Depth	Perforation Depth (MD)	From	To
				BHST	807. ft	807. ft	1. ft			

Job Times

Date	Time	Time Zone

Well Data

Description	New / Used	Max pressure psig	Size in	ID in	Weight lbm/ft	Thread	Grade	Top MD ft	Bottom MD ft	Top TVD ft	Bottom TVD ft
-------------	------------	-------------------	---------	-------	---------------	--------	-------	-----------	--------------	------------	---------------

Sales/Rental/3rd Party (HES)

Description	Qty	Qty uom	Depth	Supplier
PLUG,CMTG,TOP,9 5/8,HWE,8.16 MIN/9.06 MA	1	EA		
PORT. DATA ACQUIS. W/OPTICEM RT W/HES	1	EA		
R/A DENSOMETER W/CHART RECORDER,/JOB,ZI	1	JOB		
ADC (AUTO DENSITY CTRL) SYS, /JOB,ZI	1	JOB		

Tools and Accessories

Type	Size	Qty	Make	Depth	Type	Size	Qty	Make	Depth	Type	Size	Qty	Make
Guide Shoe					Packer					Top Plug	9.625	1	HES
Float Shoe					Bridge Plug					Bottom Plug			
Float Collar					Retainer					SSR plug set			
Insert Float										Plug Container			
Stage Tool										Centralizers			

Miscellaneous Materials

Gelling Agt	Conc	Surfactant	Conc	Acid Type	Qty	Conc	%
Treatment Fld	Conc	Inhibitor	Conc	Sand Type	Size	Qty	

Fluid Data										
Stage/Plug #: 1										
Fluid #	Stage Type	Fluid Name	Qty	Qty uom	Mixing Density lbm/gal	Yield ft3/sk	Mix Fluid Gal/sk	Rate bbl/min	Total Mix Fluid Gal/sk	
1	Water Spacer		20.00	bbl	.	.0	.0	.0		
2	Lead Cement	VERSACEM (TM) SYSTEM (452010)	120.0	sacks	12.3	2.38	13.75		13.75	
	13.75 Gal	FRESH WATER								
3	Tail Cement	SWIFTCES (TM) SYSTEM (452990)	120.0	sacks	14.2	1.43	6.88		6.72	
	6.715 Gal	FRESH WATER								
4	Displacement		53.00	bbl	.	.0	.0	.0		
Calculated Values		Pressures		Volumes						
Displacement	53	Shut In: Instant		Lost Returns		Cement Slurry	80	Pad		
Top Of Cement	SURFACE	5 Min		Cement Returns	27	Actual Displacement	53	Treatment		
Frac Gradient		15 Min		Spacers		Load and Breakdown		Total Job		
Rates										
Circulating		Mixing	6	Displacement	8	Avg. Job	6			
Cement Left In Pipe	Amount	44.2 ft	Reason	Shoe Joint						
Frac Ring # 1 @	ID	Frac ring # 2 @	ID	Frac Ring # 3 @	ID	Frac Ring # 4 @	ID			
The Information Stated Herein Is Correct				Customer Representative Signature						

The Road to Excellence Starts with Safety

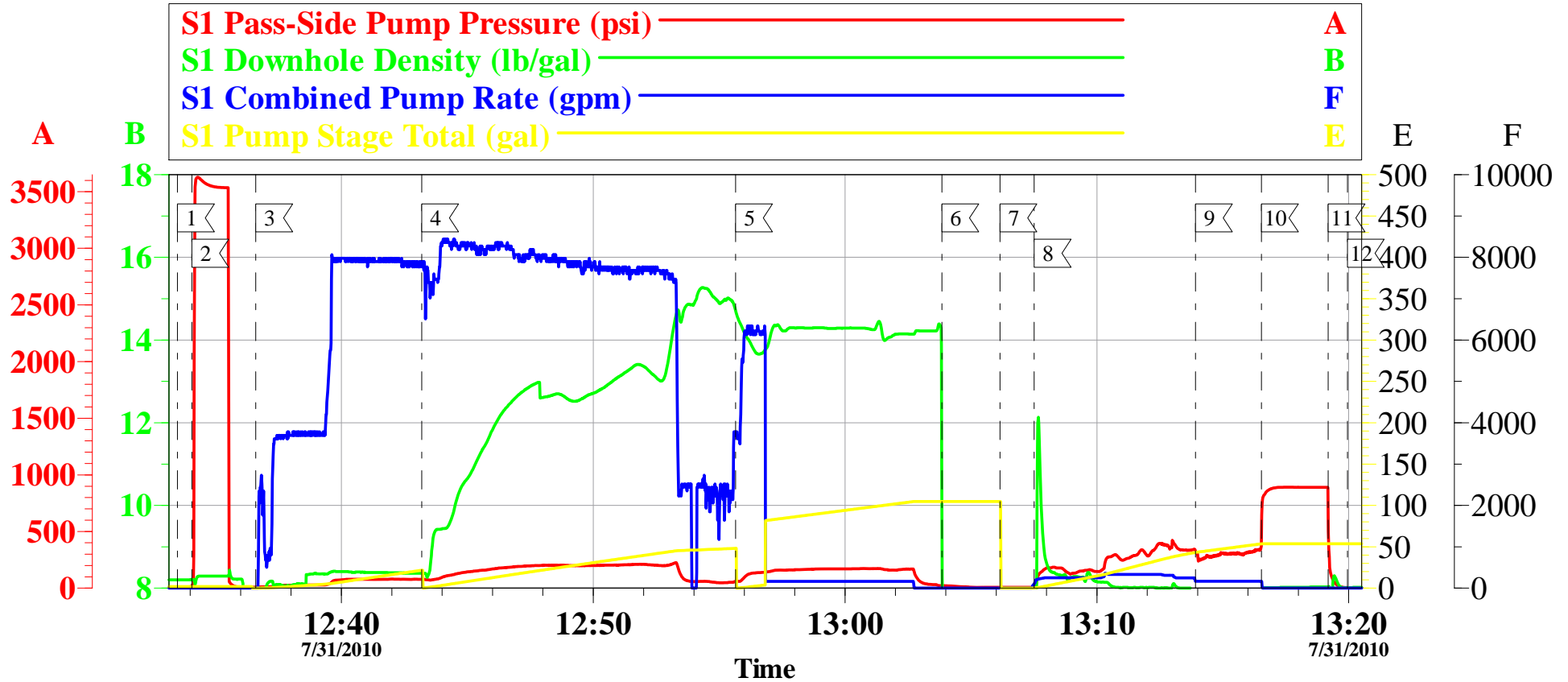
Sold To #: 343492		Ship To #: 2798146		Quote #:		Sales Order #: 7534575	
Customer: BILL BARRETT CORPORATION E-BILL				Customer Rep: South, Jodi			
Well Name: MILLER			Well #: 14C-31-691			API/UWI #: 05-045-19508	
Field: MAMM CREEK		City (SAP): SILT		County/Parish: Garfield			State: Colorado
Legal Description:							
Lat: N 39.481 deg. OR N 39 deg. 28 min. 52.23 secs.				Long: W 107.601 deg. OR W -108 deg. 23 min. 56.134 secs.			
Contractor: PROPETRO			Rig/Platform Name/Num: PRO PETRO				
Job Purpose: Cement Surface Casing						Ticket Amount:	
Well Type: Development Well			Job Type: Cement Surface Casing				
Sales Person: METLI, MARSHALL			Srvc Supervisor: MILLER, KEVIN			MBU ID Emp #: 443040	

Activity Description	Date/Time	Cht #	Rate bbl/min	Volume bbl		Pressure psig		Comments
				Stage	Total	Tubing	Casing	
Pre-Job Safety Meeting	07/31/2010 12:20							ALL HES PERSONEL AND RIG CREW
Start Job	07/31/2010 12:33							TP- 840.45, TD- 860, SJ- 45.85, CSG- 9.625 36# J-55, OH- 12 3/8,
Pressure Test	07/31/2010 12:34							ALL LINES HELD PRESSURE AT 4500
Pump Spacer 1	07/31/2010 12:36		6	20			125.0	FRESH WATER
Pump Lead Cement	07/31/2010 12:43		6	50			215.0	120 SKS, 12.3 PPG, 2.38 FT3/.SK, 13.75 GAL/SK
Pump Tail Cement	07/31/2010 12:55		6	30			200.0	120 SKS, 14.2 PPG, 1.43 FT3/ SK, 6.88 GAL/SK
Shutdown	07/31/2010 13:03							
Drop Top Plug	07/31/2010 13:06							
Pump Displacement	07/31/2010 13:07		8	53			330.0	FRESH WATER, GOT RETURNS 8 BBLS INTO DISPLACEMENT, GOT 27 BBLS OF CEMENT TO SURFACE
Slow Rate	07/31/2010 13:13		4	43			280.0	
Bump Plug	07/31/2010 13:16		4	53			900.0	
Check Floats	07/31/2010 13:19							FLOATS HELD, BUMPED PLUG AGAIN AND SHUT THE WELL IN WITH 800 PSI ON IT
End Job	07/31/2010 13:20							
Post-Job Safety Meeting (Pre Rig-Down)	07/31/2010 13:30							ALL HES PERSONEL

Activity Description	Date/Time	Cht #	Rate bbl/ min	Volume bbl		Pressure psig		Comments
				Stage	Total	Tubing	Casing	
Other	07/31/2010 13:31							ALL HES PERSONEL IS STAYING ON LOCATION TO DO NEXT SURFACE
Other	07/31/2010 13:32							THANK YOU FOR CHOOSING HALLIBURTON, KEVIN MILLER AND CREW

PRO PETRO

MILLER 14C-31-691 #, SURFACE



Local Event Log

Maximum		SPPP		Maximum		SPPP	
1	START JOB	12:33:30	19.71	2	PRESSURE TEST	12:34:04	3626
3	H2O SPACER	12:36:36	80.30	4	LEAD CEMENT	12:43:11	226.3
5	TAIL CEMENT	12:55:39	173.3	6	SHUT DOWN	13:03:51	22.30
7	DROP TOP PLUG	13:06:09	8.680	8	PUMP DISPLACEMENT	13:07:31	422.3
9	SLOW RATE	13:13:55	514.0	10	BUMP PLUG	13:16:32	891.3
11	CHECK FLOATS	13:19:11	886.3	12	END JOB	13:19:57	304.3

Customer: PETRO PLUS
 Well Description: MILLER 14C-31-691
 Customer Rep: JODI SOUTH

Job Date: 31-Jul-2010
 Job type: SURFACE
 Service Supervisor: KEVIN MILLER

Sales Order #: 7534575
 ADC Used: YES
 Operator/ Pump: ELITE 11

OptiCem v6.4.6
 31-Jul-10 13:31