

BILL BARRETT CORPORATION E-BILL
DO NOT MAIL-1099 18TH ST,STE 2300W
DENVER, Colorado

MILLER
MILLER 33D-6-791

BILL BARRETT/PETRO PLUS

Post Job Summary

Cement Surface Casing

Prepared for:
Date Prepared:
Version: 1

Service Supervisor: SMITH, DUSTIN

Submitted by:

HALLIBURTON

The Road to Excellence Starts with Safety

Sold To #: 343492	Ship To #: 2794300	Quote #:	Sales Order #: 7493991
Customer: BILL BARRETT CORPORATION E-BILL	Customer Rep: South, Jodi		
Well Name: MILLER	Well #: 33D-6-791	API/UWI #: 05-045-18667	
Field: MAMM CREEK	City (SAP): SILT	County/Parish: Garfield	State: Colorado
Lat: N 39.477 deg. OR N 39 deg. 28 min. 36.451 secs.	Long: W 107.595 deg. OR W -108 deg. 24 min. 18.277 secs.		
Contractor: BILL BARRETT	Rig/Platform Name/Num: PETRO PLUS		
Job Purpose: Cement Surface Casing			
Well Type: Development Well	Job Type: Cement Surface Casing		
Sales Person: METLI, MARSHALL	Srv Supervisor: SMITH, DUSTIN	MBU ID Emp #: 418015	

Job Personnel

HES Emp Name	Exp Hrs	Emp #	HES Emp Name	Exp Hrs	Emp #	HES Emp Name	Exp Hrs	Emp #
Hofer, Dennis	3	369666	MUHLESTEIN, RYAN Herrick	3	453609	SLAUGHTER, JESSE Dean	3	454315
SMITH, DUSTIN Michael	3	418015						

Equipment

HES Unit #	Distance-1 way	HES Unit #	Distance-1 way	HES Unit #	Distance-1 way	HES Unit #	Distance-1 way
10296152C	120 mile	10897797	120 mile	11021972	120 mile	11027039	120 mile
11259882	120 mile						

Job Hours

Date	On Location Hours	Operating Hours	Date	On Location Hours	Operating Hours	Date	On Location Hours	Operating Hours
07/14/10	3	2						

TOTAL	Total is the sum of each column separately							
-------	--------------------------------------------	--	--	--	--	--	--	--

Job

Formation Name	Formation Depth (MD)	Top	Bottom	Form Type	Job depth MD	Job Depth TVD	Water Depth	Perforation Depth (MD)	From	To	Deparied Loc
				BHST	740. ft	723. ft					

Well Data

Description	New / Used	Max pressure psig	Size in	ID in	Weight lbm/ft	Thread	Grade	Top MD ft	Bottom MD ft	Top TVD ft	Bottom TVD ft
-------------	------------	-------------------	---------	-------	---------------	--------	-------	-----------	--------------	------------	---------------

Sales/Rental/3rd Party (HES)

Description	Qty	Qty uom	Depth	Supplier
PLUG,CMTG,TOP,9 5/8,HWE,8.16 MIN/9.06 MA	1	EA		

Tools and Accessories

Type	Size	Qty	Make	Depth	Type	Size	Qty	Make	Depth	Type	Size	Qty	Make
Guide Shoe					Packer					Top Plug	9 5/8	1	
Float Shoe					Bridge Plug					Bottom Plug			
Float Collar					Retainer					SSR plug set			
Insert Float										Plug Container	9 5/8	1	
Stage Tool										Centralizers			

Miscellaneous Materials

Gelling Agt	Treatment Fld	Conc	Conc	Surfactant	Inhibitor	Conc	Conc	Acid Type	Sand Type	Qty	Size	Conc	%
-------------	---------------	------	------	------------	-----------	------	------	-----------	-----------	-----	------	------	---

Fluid Data

Stage/Plug #: 1	Fluid #	Stage Type	Fluid Name	Qty	Qty uom	Mixing Density lbm/gal	Yield ft3/sk	Mix Fluid Gal/sk	Rate bbl/min	Total Mix Fluid Gal/sk
-----------------	---------	------------	------------	-----	---------	------------------------	--------------	------------------	--------------	------------------------

1	WATER SPACER		10	bbl	.	.0	.0	6.0	
2	Lead Cement	VERSACEM (TM) SYSTEM (452010)	120	sacks	12.3	2.38	13.75	6	13.75
	13.75 Gal	FRESH WATER							
3	Tail Cement	SWIFTCEM (TM) SYSTEM (452990)	120	sacks	14.2	1.43	6.88	6	6.72
	6.715 Gal	FRESH WATER							
4	DISPLACEMENT		52.4	bbl	.	.0	.0	7.0	
Calculated Values		Pressures		Volumes					
Displacement	52.4	Shut In: Instant		Lost Returns	0	Cement Slurry	81	Pad	
Top Of Cement	SURFACE	5 Min		Cement Returns	32	Actual Displacement	52.4	Treatment	
Frac Gradient		15 Min		Spacers	10	Load and Breakdown		Total Job	
Rates									
Circulating		Mixing		Displacement		Avg. Job			
Cement Left In Pipe	Amount	44.7 ft	Reason	Shoe Joint					
Frac Ring # 1 @	ID	Frac ring # 2 @	ID	Frac Ring # 3 @	ID	Frac Ring # 4 @	ID		
The Information Stated Herein Is Correct				Customer Representative Signature					

The Road to Excellence Starts with Safety

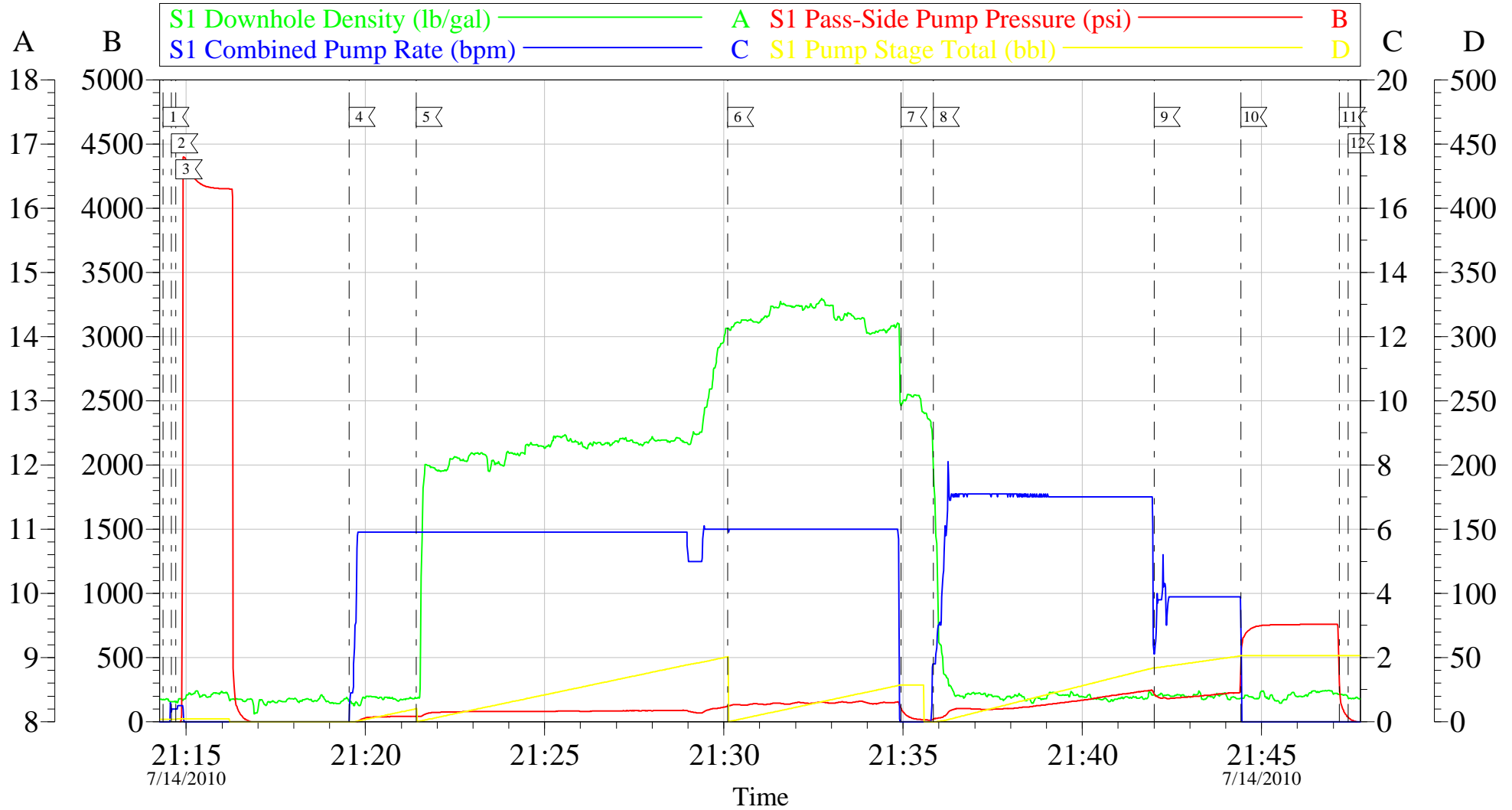
Sold To #: 343492		Ship To #: 2794300		Quote #:		Sales Order #: 7493991	
Customer: BILL BARRETT CORPORATION E-BILL				Customer Rep: South, Jodi			
Well Name: MILLER			Well #: 33D-6-791			API/UWI #: 05-045-18667	
Field: MAMM CREEK		City (SAP): SILT		County/Parish: Garfield			State: Colorado
Legal Description:							
Lat: N 39.477 deg. OR N 39 deg. 28 min. 36.451 secs.				Long: W 107.595 deg. OR W -108 deg. 24 min. 18.277 secs.			
Contractor: BILL BARRETT			Rig/Platform Name/Num: PETRO PLUS				
Job Purpose: Cement Surface Casing						Ticket Amount:	
Well Type: Development Well			Job Type: Cement Surface Casing				
Sales Person: METLI, MARSHALL			Srvc Supervisor: SMITH, DUSTIN			MBU ID Emp #: 418015	

Activity Description	Date/Time	Cht #	Rate bbl/min	Volume bbl		Pressure psig		Comments
				Stage	Total	Tubing	Casing	
Assessment Of Location Safety Meeting	07/14/2010 19:30							ALL HES EMPLOYEES
Pre-Rig Up Safety Meeting	07/14/2010 19:45							ALL HES EMPLOYEES
Rig-Up Equipment	07/14/2010 20:00							RIG UP COMPLETED AT END OF LAST JOB CREW STAYED ON LOCATION
Pre-Job Safety Meeting	07/14/2010 21:00							ALL HES EMPLOYEES AND RIG CREW
Rig-Up Completed	07/14/2010 21:10							TD: 740 TP: 723 SJ: 44.7 9 5/8 36 # CSG 12 3/8 OPEN HOLE
Test Lines	07/14/2010 21:14					4200.0		PRESSURE TEST OK
Start Job	07/14/2010 21:14							JOB PUMPED OFFLINE, HOLE DRILLED WITH AIR, NO FLUID IN WELLBORE AT TIME OF CEMENT PIPE STATIC AT TIME OF CEMENT JOB NO QUICK LATCH USED ON CEMENT HEAD
Pump Spacer	07/14/2010 21:19		6	10	10		70.0	FRESH WATER
Pump Lead Cement	07/14/2010 21:21		6	50.9	50.9		135.0	120 SKS 12.3 PPG 2.38 YIELD 13.77 GAL/SK
Pump Tail Cement	07/14/2010 21:30		6	30.6	30.6		160.0	120 SKS 14.2 PPG 1.43 YIELD 6.85 GAL/SK
Shutdown	07/14/2010 21:34							
Drop Plug	07/14/2010 21:34							PLUG AWAY NO PROBLEMS
Pump Displacement	07/14/2010 21:35		7	52.4	52.4		260.0	FRESH WATER

Activity Description	Date/Time	Cht #	Rate bbl/min	Volume bbl		Pressure psig		Comments
				Stage	Total	Tubing	Casing	
Slow Rate	07/14/2010 21:42		4	42.4	42.4		220.0	
Bump Plug	07/14/2010 21:44		4	52.4	52.4		730.0	
Check Floats	07/14/2010 21:47							FLOATS HELD 1/2 BBL BACK INTO DISPLACEMENT TANK
End Job	07/14/2010 21:47							32 BBLS CEMENT TO SURFACE
Pre-Rig Down Safety Meeting	07/14/2010 22:00							ALL HES EMPLOYEES
Rig-Down Completed	07/14/2010 22:30							RIG DOWN AND GET READY FOR NEXT JOB
Comment	07/14/2010 22:30							THANK YOU FOR USING HALLIBURTON DUSTIN SMITH AND CREW

BILL BARRETT

MILLER 33D-6-791 9 5/8 SURFACE



Local Event Log			
1	START JOB	21:14:21	2
2	FILL LINES	21:14:36	3
3	TEST LINES	21:14:43	4
4	PUMP SPACER	21:19:33	5
5	PUMP LEAD CEMENT	21:21:25	6
6	PUMP TAIL CEMENT	21:30:07	7
7	SHUTDOWN/ DROP PLUG	21:34:56	8
8	PUMP DISPLACEMENT	21:35:51	9
9	SLOW RATE	21:42:00	10
10	BUMP PLUG	21:44:25	11
11	CHECK FLOATS	21:47:10	12
12	END JOB	21:47:25	

Customer:	BILL BARRETT	Job Date:	14-Jul-2010	Sales Order #:	7493991
Well Description:	MILLER 33D-6-791	Job Type:	9 5/8 SURFACE	ADC Used:	YES
Company Rep:	JODI SOUTH	Cement Supervisor:	DUSTIN SMITH	Elite #:	9
				JESSE SLAUGHTER	