

Steil Surveying Services, LLC

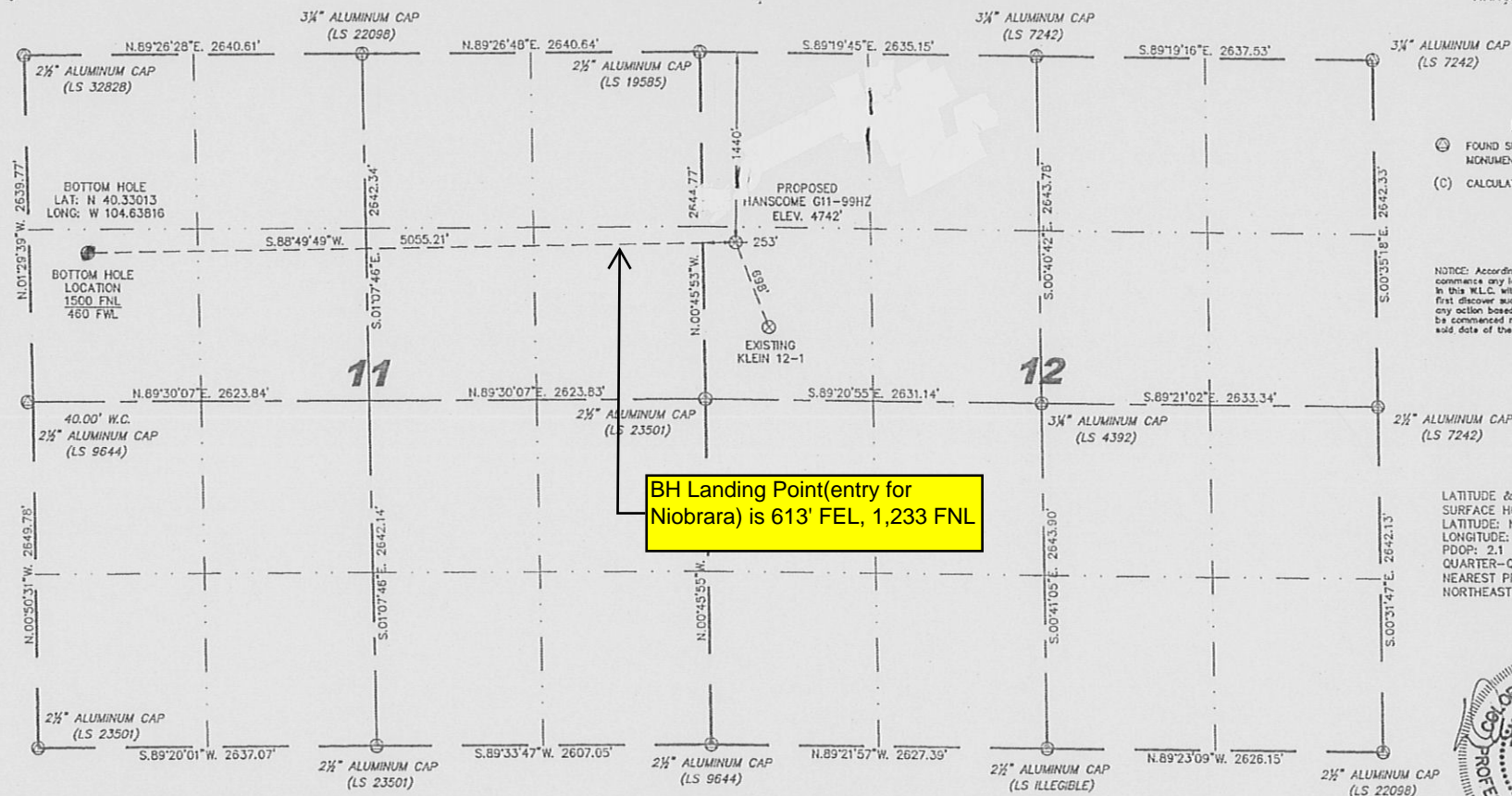
1102 West 19th Street P.O. BOX 2073

Cheyenne, Wyoming 82009

WELL LOCATION CERTIFICATE

THIS MAP DOES NOT REPRESENT A BOUNDARY SURVEY

SECTION 11 & 12
TOWNSHIP 4 NORTH
RANGE 65 WEST



- LEGEND**
- (C) FOUND SURVEY MONUMENT PER MONUMENT RECORD - EXCEPTIONS NOTED.
 - (C) CALCULATED DIMENSION

NOTES: According to Colorado law you MUST commence any legal action based upon any defect in this W.L.C. within three years after you first discover such defect. In no event may any action based upon any defect in this W.L.C. be commenced more than ten years from this said date of the certification shown hereon.

LATITUDE & LONGITUDE (NAD 83)
SURFACE HOLE:
LATITUDE: N 40.33028°
LONGITUDE: W 104.62003°
POOP: 2.1
QUARTER-QUARTER: SW/4NW/4 SEC 12
NEAREST PROPERTY LINE: 118' TO THE NORTHEAST



IN ACCORDANCE WITH A REQUEST FROM JOE MARTIN - NOBLE ENERGY INC. STEIL SURVEYING SERVICES, LLC HAS DETERMINED THE LOCATION OF THE SURFACE HOLE OF THE HANSCOME G11-99HZ WELL TO BE 1440' FNL, 253' FNL, AS MEASURED AT NINETY (90) DEGREES FROM THE SECTION LINES, SECTIONS 12, TOWNSHIP 4 NORTH, RANGE 65 WEST, 6TH PRINCIPLE MERIDIAN, WELD COUNTY, COLORADO.

I HEREBY CERTIFY THAT THIS WELL LOCATION CERTIFICATE WAS PREPARED BY ME, OR UNDER MY DIRECT SUPERVISION, THAT THE FIELD WORK WAS COMPLETED ON 05/20/2010, FOR AND ON BEHALF OF NOBLE ENERGY INC. THAT IT IS NOT A LAND SURVEY PLAT OR AN IMPROVEMENT SURVEY PLAT, AND THAT IT IS NOT TO BE RELIED UPON FOR ESTABLISHMENT OF FENCE, BUILDING, OR OTHER FUTURE IMPROVEMENT LINES.

NOTES:

- 1) BASIS OF BEARINGS FOR THIS MAP ARE BASED UPON GPS OBSERVATIONS MADE ON 07/08/2008 BETWEEN MONUMENTS LOCATED AT THE SOUTHEAST SECTION CORNER AND THE NORTHEAST SECTION CORNER OF SAID SECTION AND WITH ALL BEARINGS SHOWN HEREON RELATIVE THERETO.
- 2) ELEVATIONS ARE BASED UPON NGS GPS SOLUTION NAD83 DATUM.
- 3) THE NEAREST EXISTING WELL IS: KLEIN 12-1, 698' SOUTHEAST.
- 4) SEE VISIBLE IMPROVEMENTS EXHIBIT FOR ALL IMPROVEMENTS WITHIN 600'.
- 5) THE LOCATION FALLS IN PASTURE LAND.



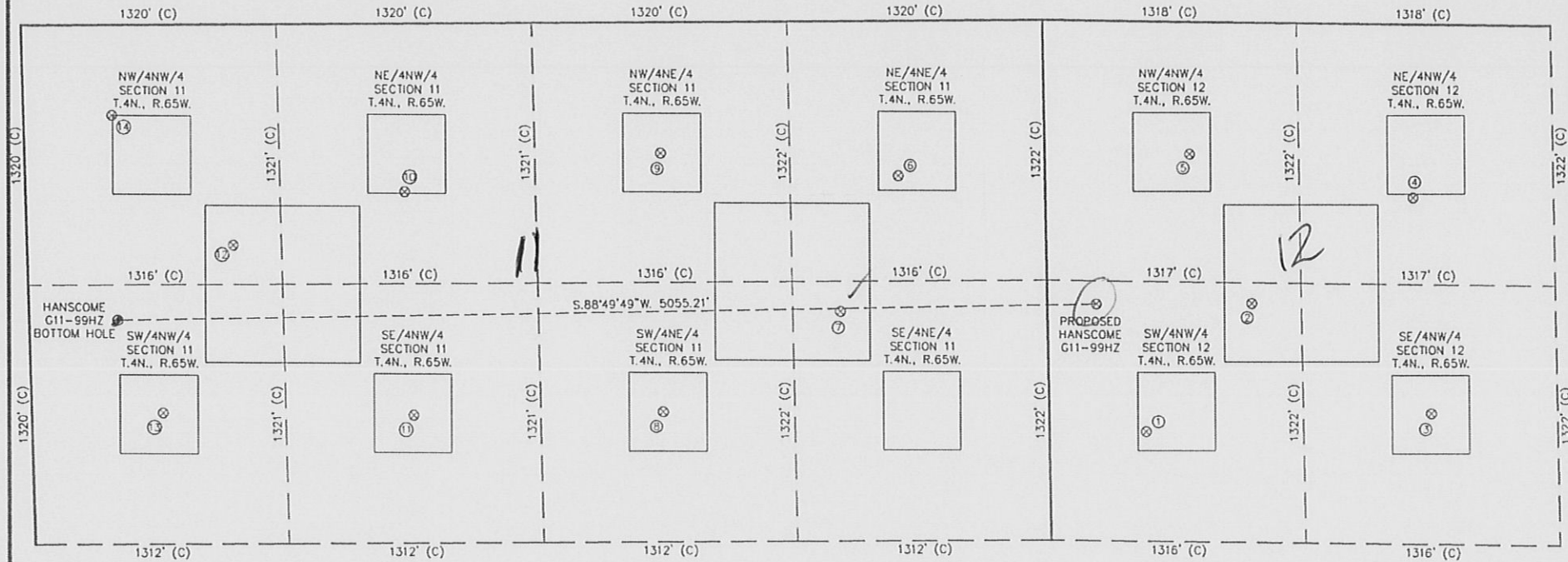
0 1000
Scale: 1"= 1000'

David C. Holmes
Professional Land Surveyor Registration No. 32828
State of Colorado

JOB #10086

Completed 06/08/2010

SECTIONS 11 & 12
TOWNSHIP 4 NORTH
RANGE 65 WEST



- | ① | ② | ③ | ④ | ⑤ | ⑥ | ⑦ | ⑧ | ⑨ | ⑩ | ⑪ | ⑫ | ⑬ | ⑭ |
|-----------------------------|--------------------------------|------------------------------|--------------------------------|-------------------------------|------------------|-------------------|-------------------|-------------------|-------------------|-------------------|--------------------|-------------------|-------------------|
| KLEIN 12-1
SW/NW SEC. 12 | EASTON G12-19
SW/NW SEC. 12 | EASTON 12-1
SE/NW SEC. 12 | EASTON 12-3/5
NE/NW SEC. 12 | EASTON NO. 2
NW/NW SEC. 12 | HANSCOME
11-7 | HANSCOME
NO. 2 | HANSCOME
NO. 6 | HANSCOME
NO. 5 | HANSCOME
NO. 3 | HANSCOME
NO. 4 | HANSCOME
11-415 | HANSCOME
NO. 1 | HANSCOME
G11-4 |
| 2066' FNL | 1427' FNL | 1979' FNL | 880' FNL | 672' FNL | 786' FNL | 1476' FNL | 1981' FNL | 665' FNL | 853' FNL | 991' FNL | 1120' FNL | 1973' FNL | 458' FNL |
| 501' FNL | 1058' FNL | 1778' FNL | 1905' FNL | 749' FNL | 759' FNL | 1470' FNL | 1984' FNL | 1984' FNL | 1961' FNL | 1973' FNL | 1066' FNL | 679' FNL | 460' FNL |
| EL 4746' | EL 4759' | EL 4778' | EL 4789' | EL 4759' | EL 4764' | EL 4707' | EL 4690' | EL 4683' | EL 4673' | EL 4673' | EL 4673' | EL 4673' | EL 4673' |
| N 40.32849 | N 40.33027 | N 40.32870 | N 40.33172 | N 40.33236 | N 40.33209 | N 40.33020 | N 40.32881 | N 40.33243 | N 40.33191 | N 40.32878 | N 40.33118 | N 40.32883 | N 40.33299 |
| W 104.61913 | W 104.61714 | W 104.61383 | W 104.61411 | W 104.61826 | W 104.62366 | W 104.62477 | W 104.62808 | W 104.62806 | W 104.63281 | W 104.63270 | W 104.63600 | W 104.63734 | W 104.63822 |
| PDOP 2.2 | PDOP 3.3 | PDOP 1.7 | PDOP 2.4 | PDOP 2.2 | PDOP 2.2 | PDOP 1.9 | PDOP 2.3 | PDOP 2.3 | PDOP 1.5 | PDOP 2.3 | PDOP 2.9 | PDOP 2.1 | PDOP 2.1 |



0 600
Scale: 1" = 600'

NOTES:

- NOTES:
- 1) THIS SKETCH DOES NOT REPRESENT A BOUNDARY SURVEY.
 - 2) THE DATUM FOR THE LATITUDES AND LONGITUDES ON THIS SKETCH IS NAD83.