

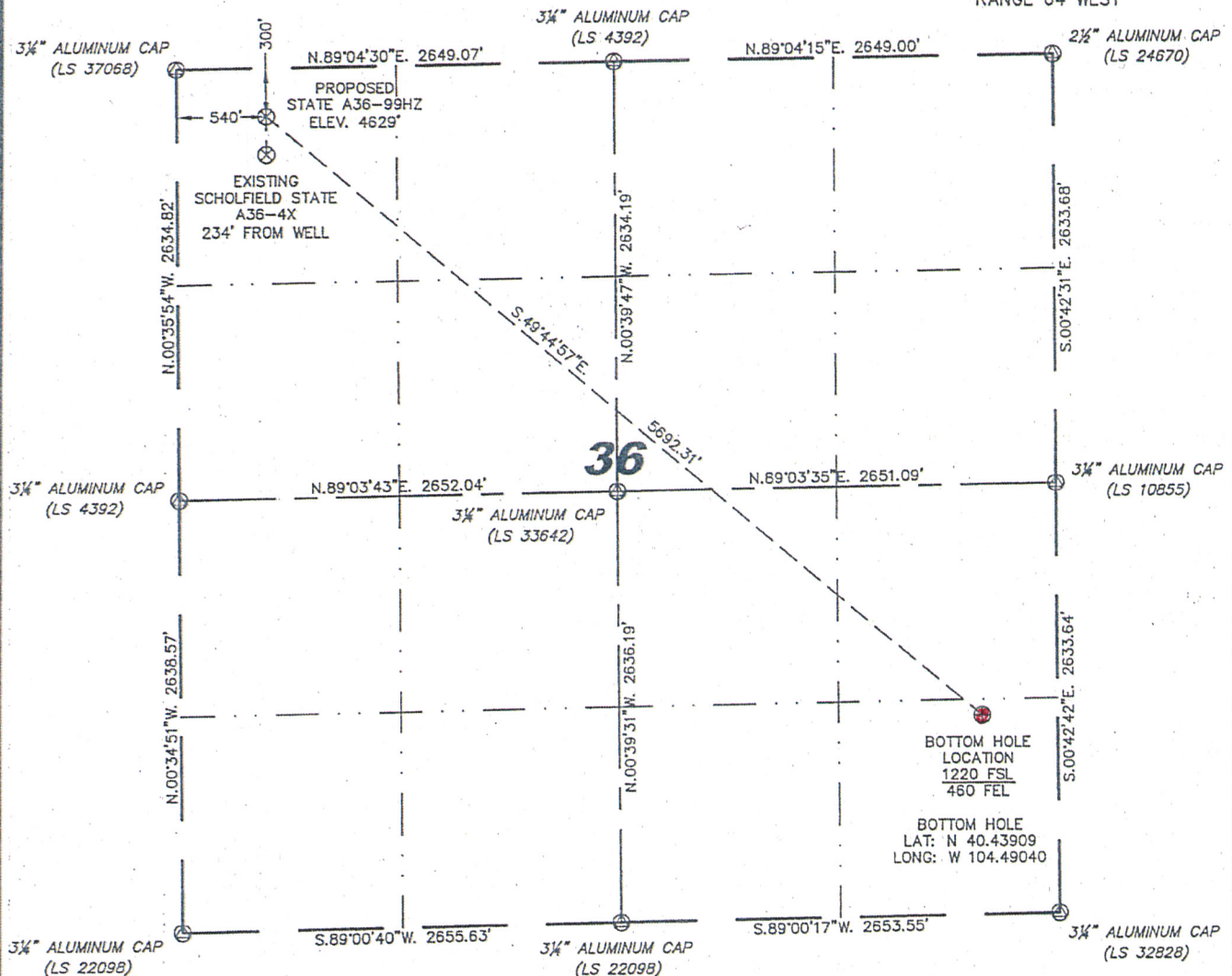
Steil Surveying Services, LLC

1102 West 19th Street P.O. BOX 2073

Cheyenne, Wyoming 82009

WELL LOCATION CERTIFICATE
THIS MAP DOES NOT REPRESENT A BOUNDARY SURVEY

SECTION 36
TOWNSHIP 6 NORTH
RANGE 64 WEST



0 1000

Scale: 1" = 1000'

IN ACCORDANCE WITH A REQUEST FROM ERIK VAN DECAR - NOBLE ENERGY INC, STEIL SURVEYING SERVICES, LLC HAS DETERMINED THE LOCATION OF THE STATE A36-99HZ WELL TO BE 300' FNL, 540' FNL, AS MEASURED AT NINETY (90) DEGREES FROM THE SECTION LINES, SECTION 36, TOWNSHIP 6 NORTH, RANGE 64 WEST, 6TH PRINCIPLE MERIDIAN, WELD COUNTY, COLORADO.

I HEREBY CERTIFY THAT THIS WELL LOCATION CERTIFICATE WAS PREPARED BY ME, OR UNDER MY DIRECT SUPERVISION, THAT THE FIELD WORK WAS COMPLETED ON 07/21/2010, FOR AND ON BEHALF OF NOBLE ENERGY INC, THAT IT IS NOT A LAND SURVEY PLAT OR AN IMPROVEMENT SURVEY PLAT, AND THAT IT IS NOT TO BE RELIED UPON FOR ESTABLISHMENT OF FENCE, BUILDING, OR OTHER FUTURE IMPROVEMENT LINES.

NOTES:

- 1) BASIS OF BEARINGS FOR THIS MAP ARE BASED UPON GPS OBSERVATIONS MADE ON 07/21/2010 BETWEEN MONUMENTS LOCATED AT THE SOUTHEAST SECTION CORNER AND THE NORTHEAST SECTION CORNER OF SAID SECTION AND WITH ALL BEARINGS SHOWN HEREON RELATIVE THERETO.
- 2) ELEVATIONS ARE BASED UPON NGS OPUS SOLUTION NAVD 88 DATUM.
- 3) THE NEAREST EXISTING WELL IS: SCHOLFIELD STATE A36-4X, 234' SOUTH.
- 4) SEE VISIBLE IMPROVEMENTS EXHIBIT FOR ALL IMPROVEMENTS WITHIN 600'.
- 5) THE LOCATION FALLS IN PASTURE LAND.

LATITUDE & LONGITUDE (NAD 83 SURFACE HOLE):
LATITUDE: N 40.44932°
LONGITUDE: W 104.50586°
PDOP: 3.5
QUARTER-QUARTER: NW/4NW/4
NEAREST PROPERTY LINE: 300' TO THE NORTH

LEGEND

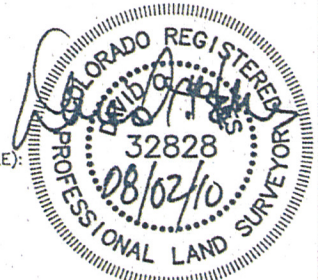
- (A) FOUND SURVEY MONUMENT PER MONUMENT RECORD - EXCEPTIONS NOTED.
(C) CALCULATED DIMENSION

NOTICE: According to Colorado law you MUST commence any legal action based upon any defect in this W.L.C. within three years after you first discover such defect. In no event may any action based upon any defect in this W.L.C. be commenced more than ten years from this sold date of the certification shown hereon.

David C. Holmes
Professional Land Surveyor Registration No. 32828
State of Colorado

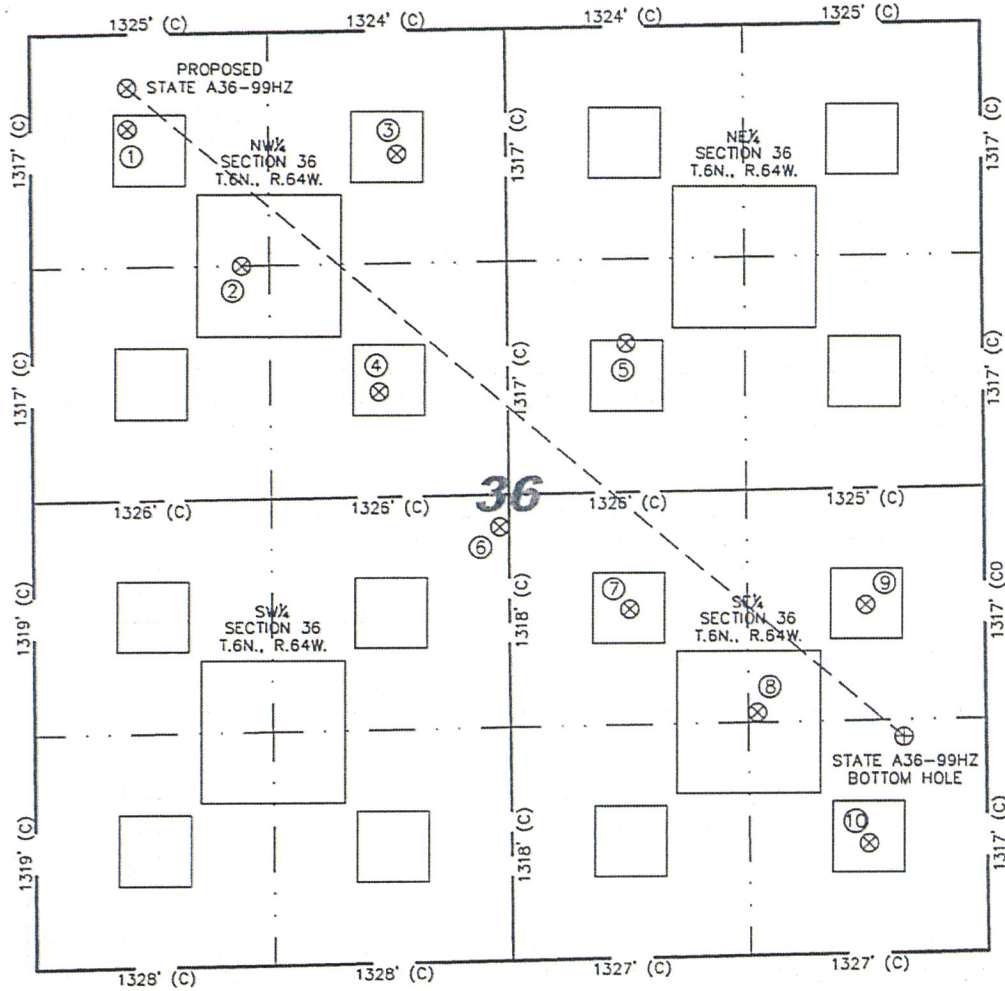
JOB #: 10086

Completed 07/22/2010



SITE SKETCH - STATE A36-99HZ

SECTION 36
TOWNSHIP 6 NORTH
RANGE 64 WEST



① SCHOLFIELD STATE A36-4X NW/NW SEC. 36 534' FNL 540' FWL EL 4629' N 40.44868 W 104.50586 PDOP 3.8	② SCHOLFIELD A36-19 NW/NW SEC. 36 1320' FNL 1171' FWL EL 4627' N 40.44653 W 104.50360 PDOP 2.2	③ STATE A36-3 NE/NW SEC. 36 698' FNL 2042' FWL EL 4631' N 40.44825 W 104.50047 PDOP 1.9	④ STATE A36-6 SE/NW SEC. 36 2039' FNL 1933' FWL EL 4621' N 40.44457 W 104.50086 PDOP 1.9	⑤ STATE A36-7 SW/NE SEC. 36 1792' FNL 1988' FEL EL 4629' N 40.44526 W 104.49590 PDOP 2.3	⑥ DEVRIES STATE A36-21 NE/SW SEC. 36 2455' FSL 2600' FWL EL 4622' N 40.44244 W 104.49847 PDOP 2.4	⑦ STATE A36-10 NW/SE SEC. 36 1971' FSL 1982' FEL EL 4625' N 40.44113 W 104.49587 PDOP 2.3
⑧ DEVRIES STATE A36-23 NE/SE SEC. 36 1371' FSL 1276' FEL EL 4625' N 40.43949 W 104.49333 PDOP 2.8	⑨ STATE A36-9 NE/SE SEC. 36 1970' FSL 665' FEL EL 4631' N 40.44115 W 104.49115 PDOP 2.1	⑩ STATE A36-16 SE/SE SEC. 36 621' FSL 661' FEL EL 4623' N 40.43744 W 104.49112 PDOP 2.8				

- NOTES:
1) THIS SKETCH DOES NOT REPRESENT A BOUNDARY SURVEY.
2) THE DATUM FOR THE LATITUDES AND LONGITUDES ON THIS SKETCH IS NAD83.

