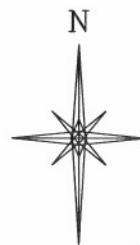
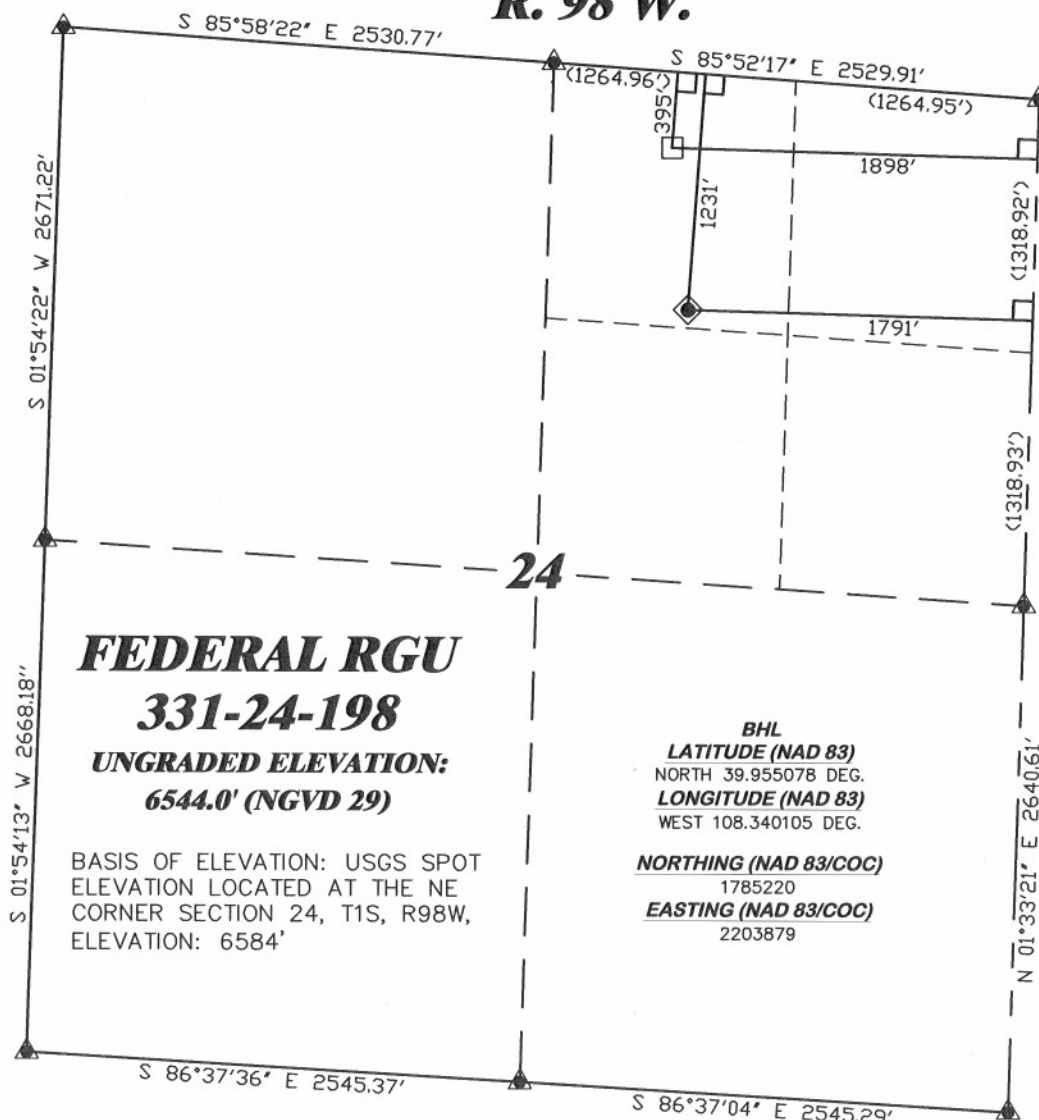


R. 98 W.



SCALE 1" = 1000'

T. 1 S.



**FEDERAL RGU
331-24-198**

**UNGRADED ELEVATION:
6544.0' (NGVD 29)**

BASIS OF ELEVATION: USGS SPOT
ELEVATION LOCATED AT THE NE
CORNER SECTION 24, T1S, R98W,
ELEVATION: 6584'

BHL
LATITUDE (NAD 83)
NORTH 39.955078 DEG.
LONGITUDE (NAD 83)
WEST 108.340105 DEG.

NORTHING (NAD 83/COC)
1785220
EASTING (NAD 83/COC)
2203879

LATITUDE (NAD 83)
NORTH 39.952770 DEG.
LONGITUDE (NAD 83)
WEST 108.339706 DEG.

NORTHING (NAD 83/COC)
1784376.08

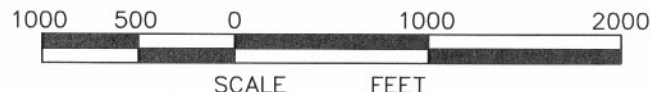
EASTING (NAD 83/COC)
2203964.22

BASIS OF BEARING/DATUM
SPCS CO NORTH NAD 27
BASED ON NGS TRIANGULATION
STATION "BINER"

NOTES

NON CROP, RANGELAND
EXISTING WELL FEATURES WITHIN
400' RADIUS OF WELL SITE.

GPS OPERATOR JOHN RICHARDSON
OBSERVED A PDOP OF 1.7.
ALL GPS OBSERVATIONS ARE IN
COMPLIANCE WITH COGCC RULE No.215.

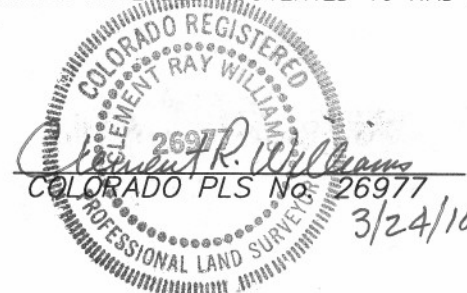


SURVEYOR'S STATEMENT

I, CLEMENT R. WILLIAMS, OF ROCK SPRINGS, WYOMING, HEREBY STATE: THIS MAP WAS MADE FROM NOTES TAKEN DURING AN ACTUAL FIELD SURVEY DONE UNDER MY DIRECT SUPERVISION ON JANUARY 26, 2010 AND THAT THIS PLAT CORRECTLY SHOWS THE LOCATION OF FEDERAL RGU 331-24-198 AS STAKED ON THE GROUND. FIELD SURVEY DATUM IS NAD 27 COLORADO NORTH STATE PLANE. VALUES HAVE BEEN COVERED TO NAD 83 COLORADO CENTRAL STATE PLANE FOR THE PURPOSES OF THIS PLAT.

LEGEND

- ◆ WELL LOCATION
- BOTTOM HOLE LOC. (APPROX)
- FOUND MONUMENT
- ▲ PREVIOUSLY FOUND MONUMENT
- L DENOTES 90° TIE



FEDERAL RGU 31-24-198 PAD



RIFFIN & ASSOCIATES, INC.
1414 ELK ST., ROCK SPRINGS, WY 82901

(307) 362-5028

DRAWN: 3/4/10 - MMM

SCALE: 1" = 1000'

REVISED: 3/24/10 - MMM

DRG JOB No. 17084

REVISED DATUM

EXHIBIT 1

**PLAT OF DRILLING LOCATION
FOR
WILLIAMS PRODUCTION RMT COMPANY**
**1231' F/NL & 1791' F/EL, SECTION 24,
T. 1 S., R. 98 W., 6th P.M.
RIO BLANCO COUNTY, COLORADO**