

DRG RIFFIN & ASSOCIATES, INC.
 (307) 362-5028 1414 ELK ST., ROCK SPRINGS, WY 82901

DRAWN: 9/30/08 - ADB

REVISED: 3/9/10 - MMM

UPDATE MAP & MISC.

SCALE: 1" = MILE

DRG JOB No. 17084

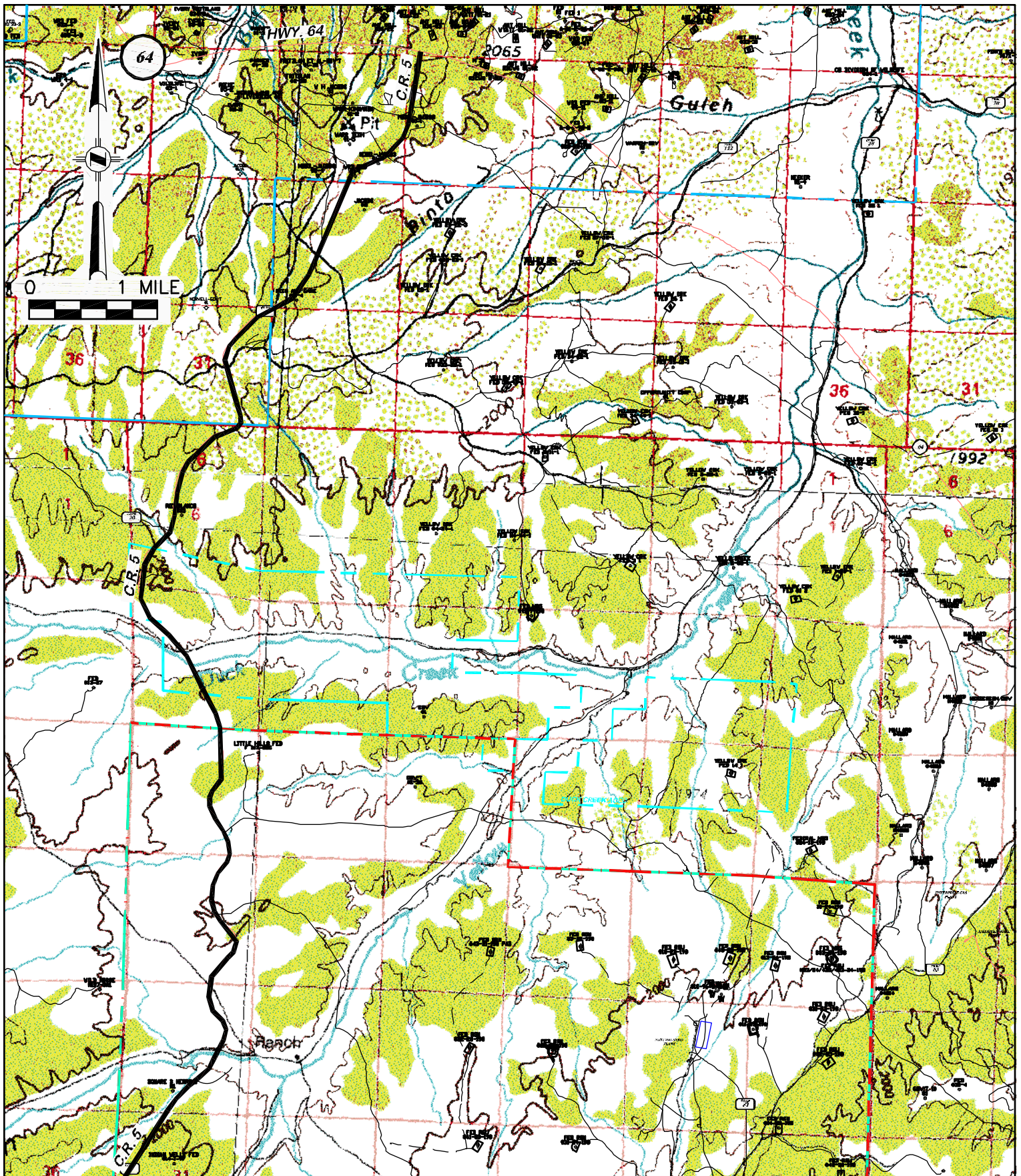
EXHIBIT 5 - SHEET 1 OF 2

EXISTING ACCESS

WILLIAMS PRODUCTION RMT COMPANY
FEDERAL RGU 21, 22, 33, 32, 41, 42, 321, 322,
331, 332, 341, 421, 431, 432, 441, 521, 531,
541-24-198 & NRG 434-13-198
NWNE, SECTION 24, T1S, R98W, 6th P.M.

EXISTING ACCESS

EXISTING ROAD



RIFFIN & ASSOCIATES, INC.

(307) 362-5028

1414 ELK ST., ROCK SPRINGS, WY 82901

DRAWN: 4/7/09 - MMM

SCALE: 1" = MILE

REVISED: 3/9/10 - MMM

DRG JOB No. 17084

UPDATE MAP & MISC.

EXHIBIT 5 - SHEET 2 OF 2

EXISTING ACCESS

WILLIAMS PRODUCTION RMT COMPANY
FEDERAL RGU 21, 22, 33, 32, 41, 42, 321, 322,
331, 332, 341, 421, 431, 432, 441, 521, 531,
541-24-198 & NRG 434-13-198
NWNE, SECTION 24, T1S, R98W, 6th P.M.

EXISTING ACCESS

EXISTING ROAD