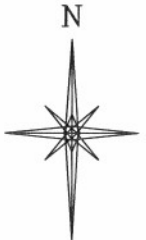


R. 98 W.



SCALE 1" = 1000'

T. 1 S.

LATITUDE (NAD 83)
NORTH 39.952754 DEG.
LONGITUDE (NAD 83)
WEST 108.339767 DEG.

NORTHING (NAD 83/COC)
1784370.67

EASTING (NAD 83/COC)
2203947.02

BASIS OF BEARING/DATUM
SPCS CO NORTH NAD 27
BASED ON NGS TRIANGULATION
STATION "BINER"

BHL
LATITUDE (NAD 83)
NORTH 39.953893 DEG.
LONGITUDE (NAD 83)
WEST 108.344595 DEG.
NORTHING (NAD 83/COC)
1784828
EASTING (NAD 83/COC)
2202607

FEDERAL RGU
421-24-198
UNGRADED ELEVATION:
6544.3' (NGVD 29)

BASIS OF ELEVATION: USGS SPOT
ELEVATION LOCATED AT THE NE
CORNER SECTION 24, T1S, R98W,
ELEVATION: 6584'

S 01°54'13" W 2668.18"

S 85°58'22" E 2530.77'
(1265.38')
S 01°54'22" W 2671.22'
(1335.61')
1902'

S 85°52'17" E 2529.91'
(1264.96')
(1264.95')
876'
1238'

(1318.92')
(1318.93')

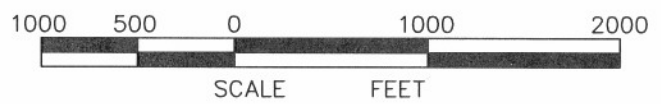
24

S 86°37'36" E 2545.37'
S 86°37'04" E 2545.29'

NOTES

NON CROP, RANGELAND
EXISTING WELL FEATURES WITHIN
400' RADIUS OF WELL SITE.

GPS OPERATOR JOHN RICHARDSON
OBSERVED A PDOP OF 1.7.
ALL GPS OBSERVATIONS ARE IN
COMPLIANCE WITH COGCC RULE No.215.

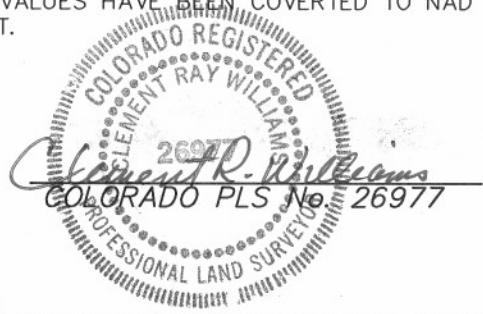


SURVEYOR'S STATEMENT


I, CLEMENT R. WILLIAMS, OF ROCK SPRINGS, WYOMING, HEREBY STATE: THIS MAP WAS MADE FROM NOTES TAKEN DURING AN ACTUAL FIELD SURVEY DONE UNDER MY DIRECT SUPERVISION ON JANUARY 26, 2010 AND THAT THIS PLAT CORRECTLY SHOWS THE LOCATION OF FEDERAL RGU 421-24-198 AS STAKED ON THE GROUND. FIELD SURVEY DATUM IS NAD 27 COLORADO NORTH STATE PLANE. VALUES HAVE BEEN COVERED TO NAD 83 COLORADO CENTRAL STATE PLANE FOR THE PURPOSES OF THIS PLAT.

LEGEND

- ◆ WELL LOCATION
- BOTTOM HOLE LOC. (APPROX)
- FOUND MONUMENT
- ▲ PREVIOUSLY FOUND MONUMENT
- L DENOTES 90° TIE



FEDERAL RGU 31-24-198 PAD

 RIFFIN & ASSOCIATES, INC. (307) 362-5028 1414 ELK ST., ROCK SPRINGS, WY 82901		PLAT OF DRILLING LOCATION FOR WILLIAMS PRODUCTION RMT COMPANY	
DRAWN: 1/12/09 - MMM		1238' F/NL & 1808' F/EL, SECTION 24,	
REVISED: 3/24/10 - MMM		T. 1 S., R. 98 W., 6th P.M.	
REVISED DATUM		RIO BLANCO COUNTY, COLORADO	
SCALE: 1" = 1000'			
DRG JOB No. 17084			
EXHIBIT 1			