

# ENSIGN

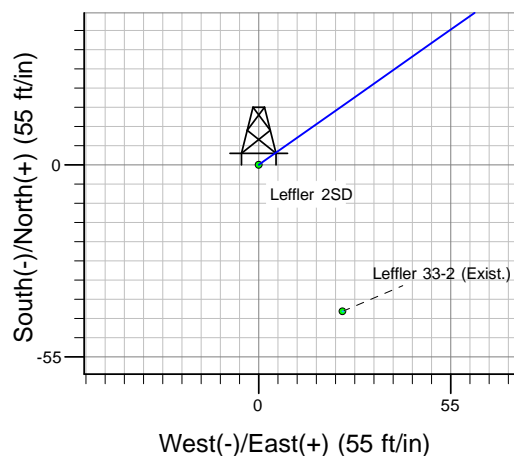
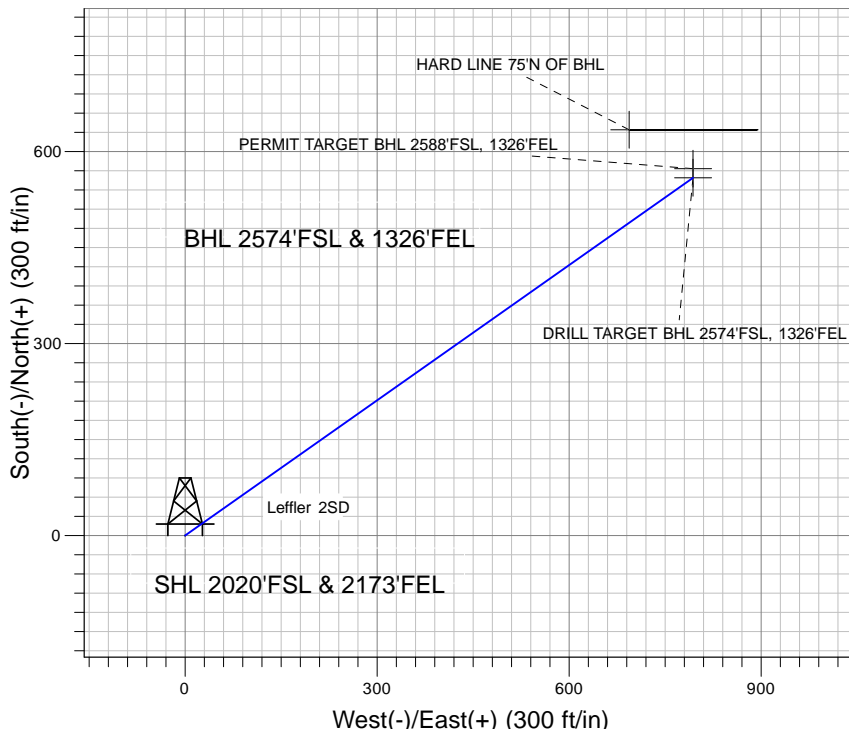
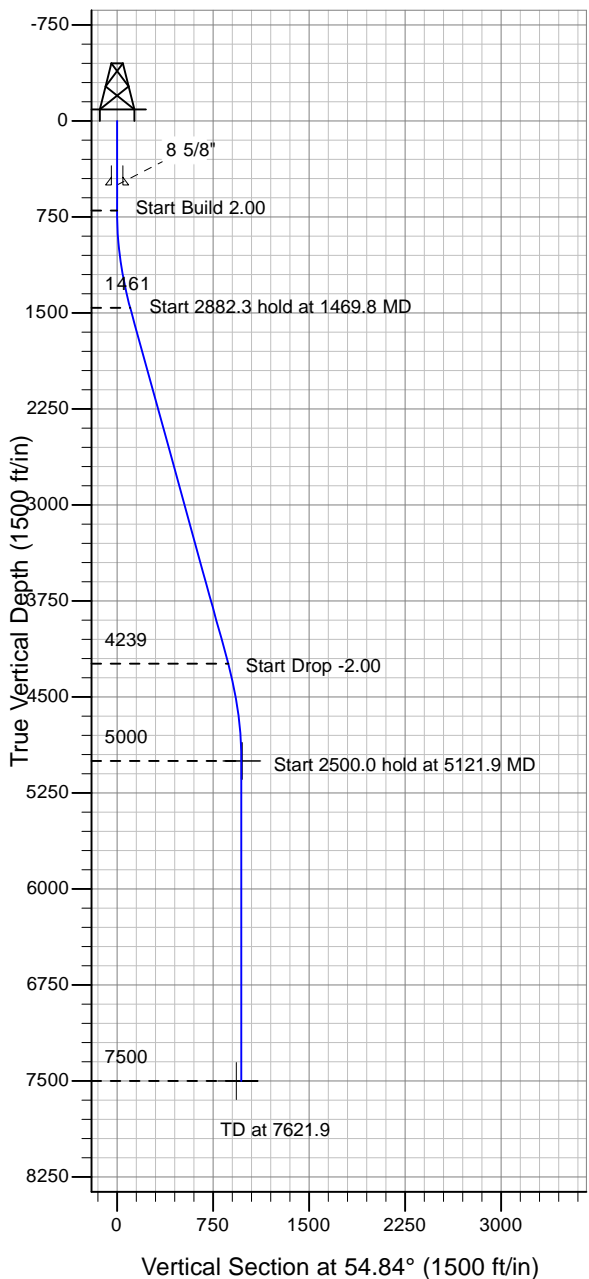
## Directional

### Well Name: Leffler 2SD

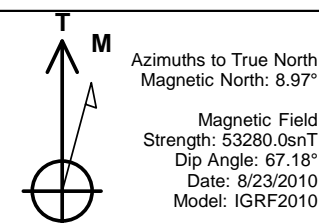
Surface Location: Leffler 2SD Pad Sec.2-T6N-R66W  
 North American Datum 1983 , US State Plane 1983 , Colorado Northern Zone  
 Ground Elevation: 4860.0

+N/-S+E/-W Northing Easting Latitude Longitude Slot  
 0.0 0.0 1431804.24 3210357.07 40° 30' 58.464 N 104° 44' 36.240 W  
 Original Well Elev WELL @ 4873.0ft (Original Well Elev)

### PETROLEUM DEVELOPMENT CORP Weld County CO



Leffler 2SD Pad Sec.2-T6N-R66W  
 Leffler 2SD  
 Plan #2 (8-23-10)  
 13:03, August 23 2010



### WELLBORE TARGET DETAILS (LAT/LONG)

Name	TVD	+N/-S	+E/-W	Latitude	Longitude	Shape
DRILL TARGET BHL 2574'FSL, 1326'FEL	5000.0	559.1	793.7	40° 31' 3.988 N	104° 44' 25.963 W	Point
PERMIT TARGET BHL 2588'FSL, 1326'FEL	5000.0	573.1	793.7	40° 31' 4.127 N	104° 44' 25.963 W	Point
HARD LINE 75'N OF BHL	7500.0	634.1	693.7	40° 31' 4.730 N	104° 44' 27.258 W	Polygon

### SECTION DETAILS

Sec	MD	Inc	Azi	TVD	+N/-S	+E/-W	DLeg	TFace	VSec	Target
1	0.0	0.00	0.00	0.0	0.0	0.0	0.00	0.00	0.0	
2	700.0	0.00	0.00	700.0	0.0	0.0	0.00	0.00	0.0	
3	1469.8	15.40	54.84	1460.6	59.2	84.1	2.00	54.84	102.8	
4	4352.1	15.40	54.84	4239.4	499.9	709.6	0.00	0.00	868.0	
5	5121.9	0.00	0.00	5000.0	559.1	793.7	2.00	180.00	970.9	DRILL TARGET BHL 2574'FSL, 1326'FEL
6	7621.9	0.00	0.00	7500.0	559.1	793.7	0.00	0.00	970.9	