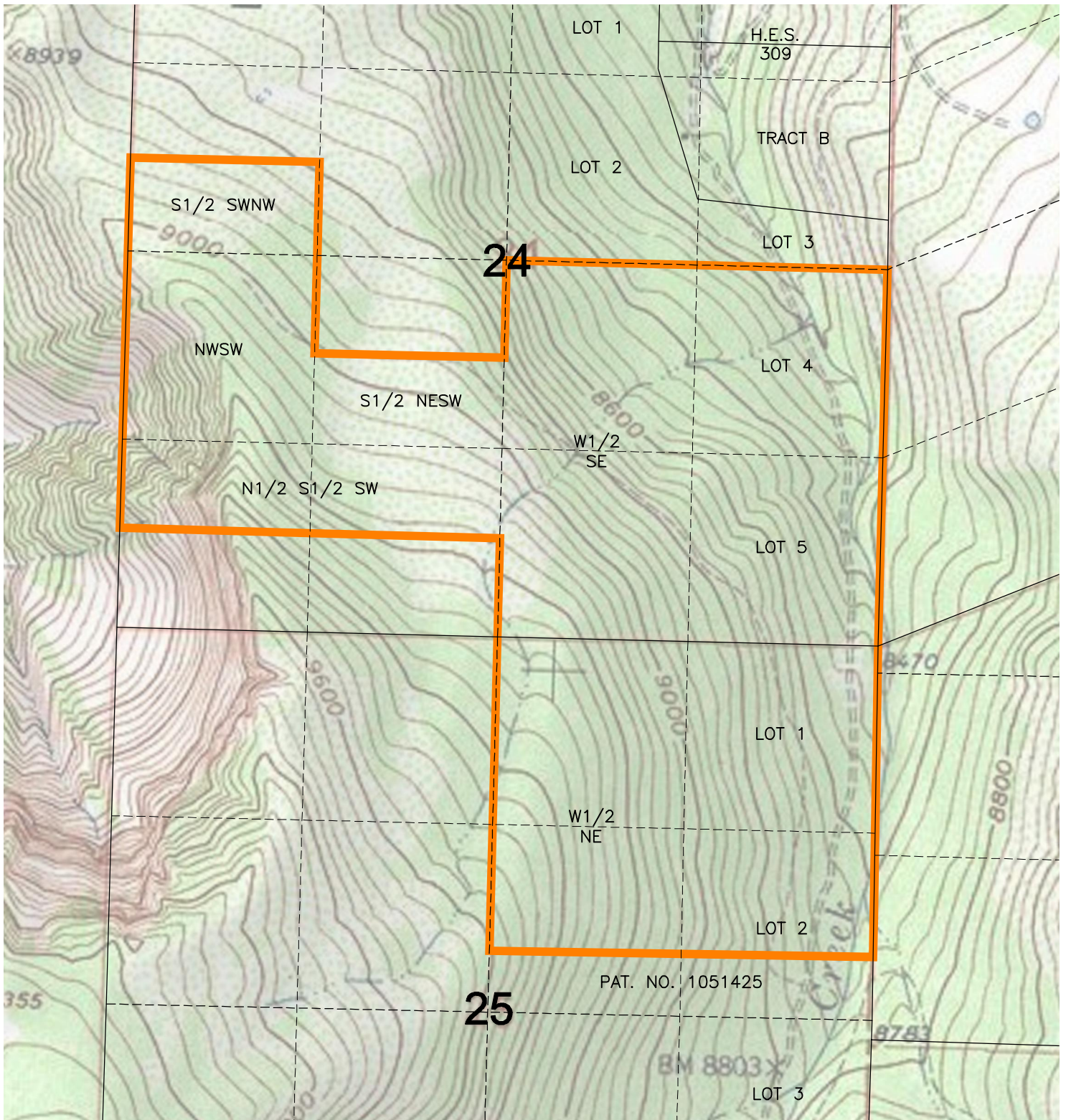
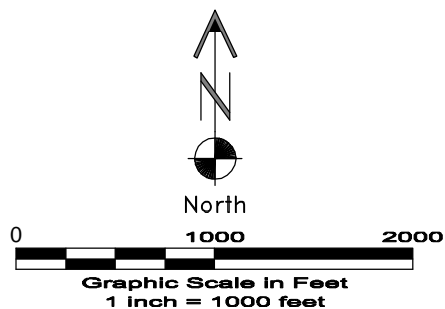


FEDERAL LEASE BOUNDARY



DWG: G:\GEO SURV\Laramie II\Drawings\Section 24 Lease.dwg USER: Owner DATE: Aug 23, 2010 9:14am



 FEDERAL LEASE BOUNDARY COC-066920

8/23/10


LAND SURVEYING AND MAPPING
LAFAYETTE - WINTER PARK
Ph 303 666 0379 Fx 303 665 6320

LARAMIE ENERGY II LLC
FEDERAL LEASE COC-066920

SECTIONS 24 & 25 T7S R94W
6th PM GARFIELD COUNTY COLORADO