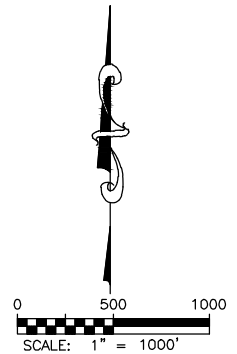
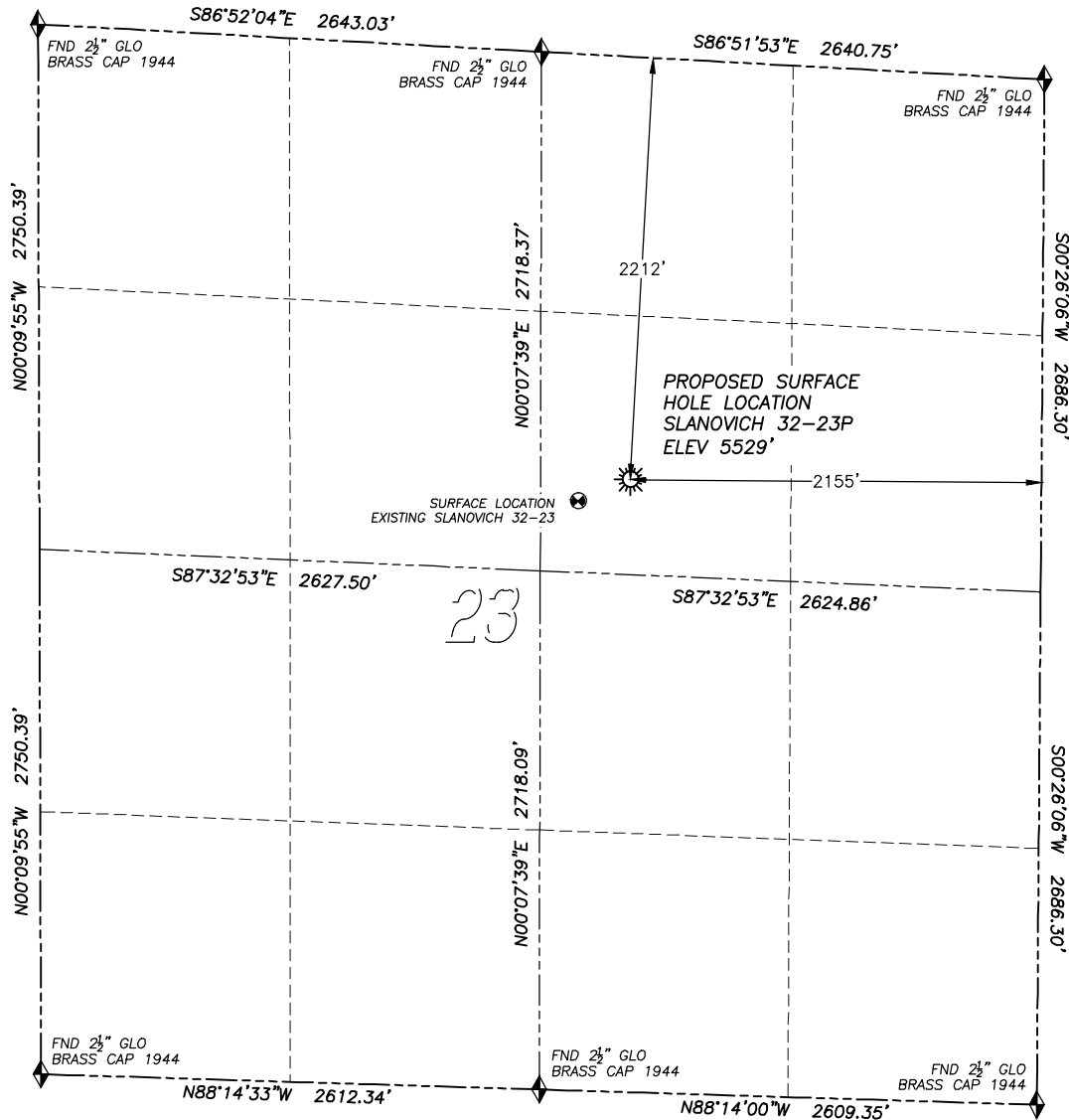


WELL LOCATION CERTIFICATE

SLANOVICH 32-23P

SECTION 23, TOWNSHIP 19 SOUTH, RANGE 70 WEST OF THE 6TH PRINCIPAL MERIDIAN

**LEGEND**

- ◆ FOUND MONUMENT AS DESCRIBED
- ☀ PROPOSED WELL
- ⊙ EXISTING WELL
- BOTTOM HOLE
- ⋈ ABANDONED WELL

NAD 83 LATITUDE AND LONGITUDE**SLANOVICH 32-23P SURFACE HOLE:**

LATITUDE: N38.38280°
 LONGITUDE: W105.18830°
 ELEVATION: 5529'
 PDOP 1.2
 2212' FNL, 2155' FEL

NEAREST EXISTING WELL:

SLANOVICH 32-23 SURFACE HOLE
 LATITUDE: N38.38249°
 LONGITUDE: W105.18926°
 ELEVATION: 5536'
 297' SOUTHWEST

QUARTER/QUARTER: SW4/NE4

NEAREST APPARENT PROPERTY LINE:
 220' ± SOUTHEAST

IN ACCORDANCE WITH A REQUEST FROM STRATA-X INC., DALEY LAND SURVEYING, INC. HAS DETERMINED THE SURFACE LOCATION OF THE SLANOVICH 32-23P WELL TO BE 2212' FNL, 2155' FEL, AS MEASURED AT NINETY (90) DEGREES FROM THE SECTION LINES OF SECTION 23, TOWNSHIP 19 SOUTH, RANGE 70 WEST OF THE 6TH PRINCIPAL MERIDIAN, FREMONT COUNTY, COLORADO.

I HEREBY CERTIFY THAT THIS WELL LOCATION CERTIFICATE WAS PREPARED BY ME OR UNDER MY DIRECT SUPERVISION, THAT THE WORK WAS COMPLETED ON 8/16/2010 FOR AND ON BEHALF OF STRATA-X INC., AND THAT THIS MAP DOES NOT REPRESENT A BOUNDARY SURVEY, IT IS NOT A LAND SURVEY PLAT OR AN IMPROVEMENT SURVEY PLAT AND IT IS NOT TO BE RELIED UPON FOR THE ESTABLISHMENT OF FENCE, BUILDING OR OTHER FUTURE IMPROVEMENT LINES.

NOTES:

- 1) BEARINGS FOR THIS MAP ARE ASSUMED AND BASED UPON GPS OBSERVATIONS MADE BETWEEN MONUMENTS LOCATED AT THE NORTHEAST CORNER AND NORTH QUARTER CORNER OF SECTION 23, T.19S., R.70W.
- 2) HORIZONTAL DATUM IS NAD83.
- 3) VERTICAL DATUM IS NAVD88. ELEVATIONS ARE DERIVED FROM GPS OBSERVATIONS PROCESSED THROUGH OPUS, UTILIZING THE GEOID03 MODEL.
- 4) SEE VISIBLE IMPROVEMENTS EXHIBIT FOR VISIBLE IMPROVEMENTS WITHIN 600' OF PROPOSED SURFACE HOLE LOCATION.
- 5) SURFACE USE: OPEN RANGE LAND.

NOTICE: According to Colorado law you MUST commence any legal action based upon any defect in this W.L.C. within three years after you first discover such defect. In no event may any action based upon any such defect in this W.L.C. be commenced more than ten years from the date of the certification shown hereon.

FOR AND ON BEHALF OF
 DALEY LAND SURVEYING INC.,
 Robert Daley, PLS 35597

