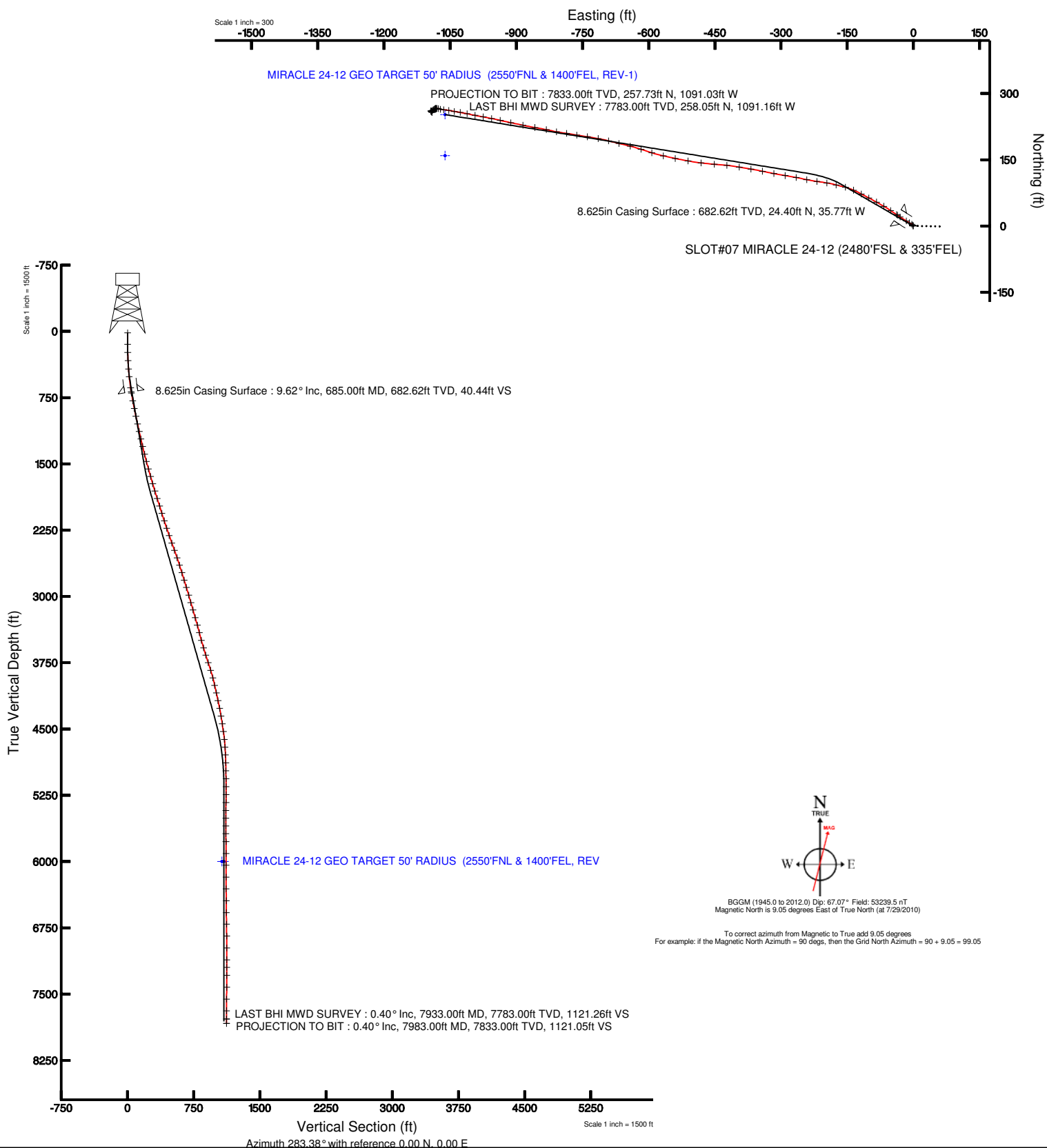


KERR MCGEE OIL & GAS ONSHORE LP

Location: COLORADO Slot: SLOT#07 MIRACLE 24-12 (2480'FSL & 335'FEL)
 Field: LARIMER COUNTY Well: MIRACLE 24-12
 Facility: SEC.12-T5N-R68W Wellbore: MIRACLE 24-12 PWB



Plot reference wellpath is MIRACLE 24-12 (REV-B.0) PWP	
True vertical depths are referenced to XTREME 6 (RT)	Grid System: NAD83 / Lambert Colorado State Planes, Northern Zone (501), US feet
Measured depths are referenced to XTREME 6 (RT)	North Reference: True north
XTREME 6 (RT) to Mean Sea Level: 4866 feet	Scale: True distance
Mean Sea Level to Mud line (Facility: SEC.12-T5N-R68W): 0 feet	Depths are in feet
Coordinates are in feet referenced to Slot	Created by: bensjaj on 8/18/2010





Actual Wellpath Report

MIRACLE 24-12 AWP

Page 1 of 5



INTEQ

REFERENCE WELLPATH IDENTIFICATION

Operator	KERR MCGEE OIL & GAS ONSHORE LP	Slot	SLOT#07 MIRACLE 24-12 (2480'FSL & 335'FEL)
Area	COLORADO	Well	MIRACLE 24-12
Field	LARIMER COUNTY	Wellbore	MIRACLE 24-12 AWB
Facility	SEC.12-T5N-R68W		

REPORT SETUP INFORMATION

Projection System	NAD83 / Lambert Colorado State Planes, Northern Zone (501), US feet	Software System	WellArchitect® 2.0
North Reference	True	User	Bensjacj
Scale	0.999961	Report Generated	8/18/2010 at 4:04:05 PM
Convergence at slot	0.36° East	Database/Source file	WA_Denver/MIRACLE_24-12_AWB.xml

WELLPATH LOCATION

	Local coordinates		Grid coordinates		Geographic coordinates	
	North[ft]	East[ft]	Easting[USft]	Northing[USft]	Latitude	Longitude
Slot Location	1.09	-59.87	3154360.65	1394064.36	40°24'49.622"N	104°56'44.329"W
Facility Reference Pt			3154420.53	1394063.64	40°24'49.612"N	104°56'43.555"W
Field Reference Pt			3154420.53	1394063.64	40°24'49.612"N	104°56'43.555"W

WELLPATH DATUM

Calculation method	Minimum curvature	XTREME 6 (RT) to Facility Vertical Datum	4866.00ft
Horizontal Reference Pt	Slot	XTREME 6 (RT) to Mean Sea Level	4866.00ft
Vertical Reference Pt	XTREME 6 (RT)	Facility Vertical Datum to Mud Line (Facility)	0.00ft
MD Reference Pt	XTREME 6 (RT)	Section Origin	N 0.00, E 0.00 ft
Field Vertical Reference	Mean Sea Level	Section Azimuth	283.38°



Actual Wellpath Report

MIRACLE 24-12 AWP

Page 2 of 5



INTEQ

REFERENCE WELLPATH IDENTIFICATION

Operator	KERR MCGEE OIL & GAS ONSHORE LP	Slot	SLOT#07 MIRACLE 24-12 (2480'FSL & 335'FEL)
Area	COLORADO	Well	MIRACLE 24-12
Field	LARIMER COUNTY	Wellbore	MIRACLE 24-12 AWB
Facility	SEC.12-T5N-R68W		

WELLPATH DATA (85 stations) † = interpolated/extrapolated station

MD [ft]	Inclination [°]	Azimuth [°]	TVD [ft]	Vert Sect [ft]	North [ft]	East [ft]	DLS [°/100ft]	Comments
0.00†	0.000	342.300	0.00	0.00	0.00	0.00	0.00	
16.00	0.000	342.300	16.00	0.00	0.00	0.00	0.00	
146.00	0.400	342.300	146.00	0.23	0.43	-0.14	0.31	
238.00	1.300	329.700	237.99	1.12	1.64	-0.76	0.99	
331.00	3.000	301.900	330.92	4.16	3.84	-3.36	2.09	
424.00	4.600	300.500	423.71	10.03	7.02	-8.64	1.72	
513.00	6.000	302.600	512.33	17.83	11.33	-15.63	1.59	
640.00	9.100	303.300	638.21	33.55	20.43	-29.62	2.44	
700.00	9.800	302.300	697.40	42.84	25.76	-37.91	1.20	
788.00	11.300	305.400	783.91	57.91	34.76	-51.26	1.82	
878.00	12.100	299.800	872.04	75.14	44.55	-66.64	1.54	
968.00	12.700	299.100	959.94	93.71	54.05	-83.47	0.69	
1058.00	12.400	298.000	1047.79	112.58	63.40	-100.64	0.43	
1145.00	13.200	297.700	1132.63	131.24	72.40	-117.69	0.92	
1232.00	13.100	294.200	1217.35	150.55	81.06	-135.48	0.92	
1319.00	13.100	285.000	1302.10	170.09	87.66	-153.99	2.39	
1408.00	14.700	284.000	1388.49	191.47	93.00	-174.69	1.82	
1494.00	14.600	279.400	1471.69	213.19	97.41	-195.98	1.36	
1582.00	15.400	278.400	1556.69	235.90	100.93	-218.48	0.96	
1669.00	16.000	281.500	1640.45	259.39	105.00	-241.66	1.19	
1756.00	16.600	281.200	1723.95	283.79	109.81	-265.60	0.70	
1843.00	17.000	278.700	1807.24	308.89	114.15	-290.36	0.95	
1931.00	17.600	281.500	1891.26	335.01	118.74	-316.11	1.17	
2019.00	17.600	281.500	1975.14	361.60	124.05	-342.19	0.00	
2107.00	17.200	279.100	2059.11	387.88	128.76	-368.07	0.93	
2195.00	18.300	280.800	2142.93	414.65	133.41	-394.49	1.38	
2284.00	18.900	275.900	2227.28	442.91	137.51	-422.56	1.88	
2372.00	19.300	273.800	2310.44	471.38	139.94	-451.25	0.90	
2462.00	20.000	277.600	2395.20	501.36	142.96	-481.34	1.62	
2549.00	19.700	279.800	2477.03	530.80	147.42	-510.54	0.93	
2639.00	18.800	281.900	2562.00	560.43	152.99	-539.68	1.26	
2728.00	17.500	282.900	2646.57	588.15	158.94	-566.76	1.50	
2817.00	17.500	287.100	2731.45	614.89	165.86	-592.59	1.42	
2904.00	17.100	288.200	2814.52	640.69	173.70	-617.24	0.59	
2992.00	16.700	284.000	2898.72	666.22	180.80	-641.80	1.46	
3083.00	16.600	283.300	2985.91	692.29	186.96	-667.14	0.25	
3170.00	16.300	284.700	3069.34	716.93	192.91	-691.05	0.57	
3257.00	15.900	280.100	3152.94	741.03	198.10	-714.59	1.54	
3347.00	16.100	278.700	3239.45	765.78	202.15	-739.06	0.48	
3435.00	15.600	279.800	3324.10	789.75	206.01	-762.78	0.66	
3524.00	14.900	278.400	3409.97	813.09	209.72	-785.89	0.89	
3615.00	15.000	280.500	3497.89	836.51	213.57	-809.05	0.61	
3702.00	16.600	282.200	3581.60	860.18	218.25	-832.27	1.91	
3789.00	18.200	279.400	3664.62	886.16	223.10	-857.82	2.08	
3878.00	18.200	281.900	3749.17	913.92	228.23	-885.13	0.88	



Actual Wellpath Report

MIRACLE 24-12 AWP

Page 3 of 5



INTEQ

REFERENCE WELLPATH IDENTIFICATION

Operator	KERR MCGEE OIL & GAS ONSHORE LP	Slot	SLOT#07 MIRACLE 24-12 (2480'FSL & 335'FEL)
Area	COLORADO	Well	MIRACLE 24-12
Field	LARIMER COUNTY	Wellbore	MIRACLE 24-12 AWB
Facility	SEC.12-T5N-R68W		

WELLPATH DATA (85 stations)

MD [ft]	Inclination [°]	Azimuth [°]	TVD [ft]	Vert Sect [ft]	North [ft]	East [ft]	DLS [°/100ft]	Comments
3969.00	17.500	281.900	3835.79	941.81	233.99	-912.43	0.77	
4058.00	14.500	282.900	3921.33	966.33	239.23	-936.39	3.38	
4145.00	12.700	281.500	4005.89	986.78	243.57	-956.38	2.10	
4233.00	12.500	280.100	4091.77	1005.96	247.17	-975.23	0.41	
4322.00	12.000	281.200	4178.74	1024.82	250.66	-993.79	0.62	
4412.00	11.400	281.900	4266.87	1043.06	254.31	-1011.67	0.69	
4500.00	9.400	279.400	4353.42	1058.92	257.28	-1027.27	2.33	
4589.00	8.400	279.800	4441.35	1072.66	259.57	-1040.85	1.13	
4678.00	7.800	281.500	4529.46	1085.19	261.88	-1053.17	0.73	
4767.00	7.200	274.500	4617.70	1096.73	263.52	-1064.65	1.23	
4855.00	3.100	283.300	4705.33	1104.57	264.50	-1072.47	4.73	
4944.00	2.500	290.700	4794.22	1108.90	265.74	-1076.63	0.79	
5034.00	1.900	268.900	4884.16	1112.29	266.41	-1079.95	1.13	
5123.00	0.700	265.300	4973.13	1114.23	266.33	-1081.97	1.35	
5213.00	1.100	273.400	5063.12	1115.61	266.34	-1083.38	0.47	
5304.00	0.500	147.200	5154.11	1116.18	266.06	-1084.04	1.60	
5393.00	0.400	91.000	5243.11	1115.60	265.73	-1083.52	0.49	
5483.00	0.400	85.700	5333.11	1114.99	265.74	-1082.89	0.04	
5572.00	0.300	104.700	5422.11	1114.46	265.71	-1082.35	0.17	
5661.00	0.100	122.300	5511.11	1114.16	265.61	-1082.06	0.23	
5748.00	0.100	216.800	5598.11	1114.11	265.51	-1082.05	0.17	
5836.00	0.400	269.600	5686.11	1114.44	265.44	-1082.40	0.40	
5926.00	0.400	277.600	5776.10	1115.06	265.48	-1083.02	0.06	
6059.00	0.000	276.600	5909.10	1115.52	265.54	-1083.48	0.30	
6193.00	0.100	237.600	6043.10	1115.60	265.48	-1083.58	0.07	
6328.00	0.300	236.900	6178.10	1115.93	265.23	-1083.98	0.15	
6460.00	0.700	258.300	6310.10	1116.90	264.87	-1085.06	0.33	
6594.00	0.900	243.200	6444.08	1118.44	264.23	-1086.80	0.22	
6729.00	0.500	229.100	6579.07	1119.60	263.37	-1088.19	0.32	
6860.00	1.100	244.300	6710.06	1120.91	262.45	-1089.76	0.48	
6994.00	1.400	230.500	6844.03	1122.89	260.85	-1092.18	0.32	
7130.00	0.400	327.200	6980.01	1124.24	260.19	-1093.72	1.10	
7263.00	0.000	150.400	7113.01	1124.57	260.58	-1093.97	0.30	
7350.00	0.400	96.900	7200.01	1124.27	260.55	-1093.67	0.46	
7440.00	0.400	120.100	7290.01	1123.66	260.35	-1093.08	0.18	
7575.00	0.300	127.900	7425.01	1122.89	259.90	-1092.40	0.08	
7708.00	0.400	126.700	7558.01	1122.14	259.41	-1091.75	0.08	
7840.00	0.400	172.800	7690.00	1121.56	258.67	-1091.32	0.24	
7933.00	0.400	157.800	7783.00	1121.26	258.05	-1091.16	0.11	LAST BHI MWD SURVEY
7983.00	0.400	157.800	7833.00	1121.05	257.73	-1091.03	0.00	PROJECTION TO BIT



Actual Wellpath Report

MIRACLE 24-12 AWP

Page 4 of 5



INTEQ

REFERENCE WELLPATH IDENTIFICATION			
Operator	KERR MCGEE OIL & GAS ONSHORE LP	Slot	SLOT#07 MIRACLE 24-12 (2480'FSL & 335'FEL)
Area	COLORADO	Well	MIRACLE 24-12
Field	LARIMER COUNTY	Wellbore	MIRACLE 24-12 AWB
Facility	SEC.12-T5N-R68W		

HOLE & CASING SECTIONS Ref Wellbore: MIRACLE 24-12 AWB Ref Wellpath: MIRACLE 24-12 AWP									
String/Diameter	Start MD [ft]	End MD [ft]	Interval [ft]	Start TVD [ft]	End TVD [ft]	Start N/S [ft]	Start E/W [ft]	End N/S [ft]	End E/W [ft]
12.25in Open Hole	16.00	695.00	679.00	16.00	692.47	0.00	0.00	25.30	-37.19
8.625in Casing Surface	16.00	685.00	669.00	16.00	682.62	0.00	0.00	24.40	-35.77
7.875in Open Hole	685.00	7983.00	7298.00	682.62	7833.00	24.40	-35.77	257.73	-1091.03

TARGETS									
Name	MD [ft]	TVD [ft]	North [ft]	East [ft]	Grid East [srv ft]	Grid North [srv ft]	Latitude	Longitude	Shape
MIRACLE 24-12 GEO TARGET 50' RADIUS (2550'FNL & 1400'FEL, REV-1)		6000.00	252.49	-1061.78	3153297.36	1394310.20	40°24'52.117"N	104°56'58.056"W	point
MIRACLE 24-12 HARLINE 93'S OF GEO TARGET		6000.00	159.49	-1061.78	3153297.94	1394217.21	40°24'51.198"N	104°56'58.056"W	point

WELLPATH COMPOSITION Ref Wellbore: MIRACLE 24-12 AWB Ref Wellpath: MIRACLE 24-12 AWP				
Start MD [ft]	End MD [ft]	Positional Uncertainty Model	Log Name/Comment	Wellbore
16.00	7933.00	NaviTrak (Standard)	BHI MWD SURVEYS <146-7933>	MIRACLE 24-12 AWB
7933.00	7983.00	Blind Drilling (std)	Projection to bit	MIRACLE 24-12 AWB



Actual Wellpath Report

MIRACLE 24-12 AWP

Page 5 of 5



INTEQ

REFERENCE WELLPATH IDENTIFICATION

Operator	KERR MCGEE OIL & GAS ONSHORE LP	Slot	SLOT#07 MIRACLE 24-12 (2480'FSL & 335'FEL)
Area	COLORADO	Well	MIRACLE 24-12
Field	LARIMER COUNTY	Wellbore	MIRACLE 24-12 AWB
Facility	SEC.12-T5N-R68W		

WELLPATH COMMENTS

MD [ft]	Inclination [°]	Azimuth [°]	TVD [ft]	Comment
7933.00	0.400	157.800	7783.00	LAST BHI MWD SURVEY
7983.00	0.400	157.800	7833.00	PROJECTION TO BIT